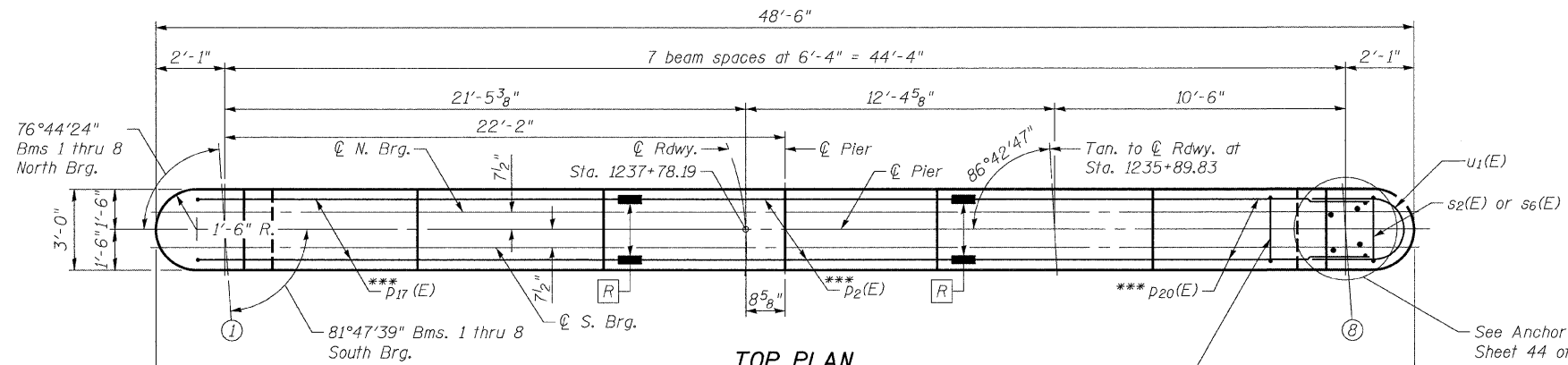


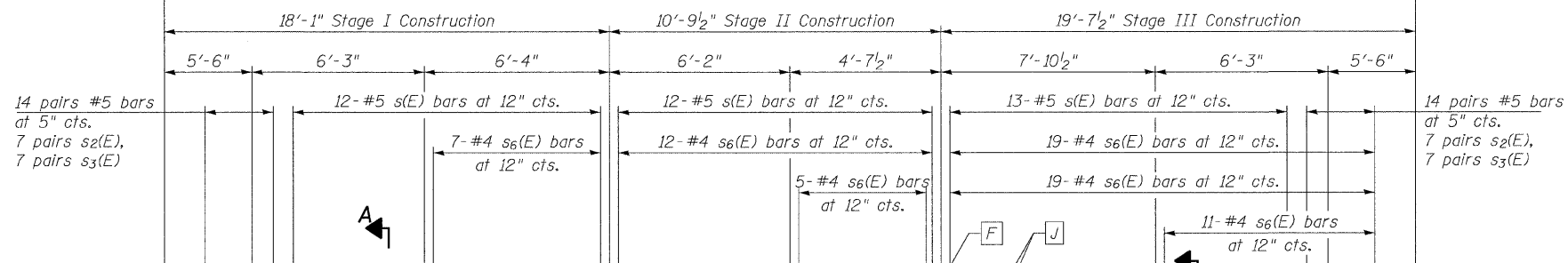
- A 5-#10 p<sub>17</sub>(E) bars top, Layer 1; See Sec. A-A
- A 5-#10 p<sub>18</sub>(E) bars top, Layer 2; See Sec. A-A
- B 2-#5 h<sub>19</sub>(E) bars E.F.
- C 5-#7 p<sub>15</sub>(E) bars bottom
- D 1-#5 h<sub>20</sub>(E) bar E.F.
- E 1-#5 h<sub>13</sub>(E) bar E.F.
- F 1-#5 h<sub>21</sub>(E) bar E.F.
- G 5-#10 p<sub>2</sub>(E) bars top; See Sec. B-B
- H 2-#5 h<sub>13</sub>(E) bars E.F.
- I 5-#7 p<sub>7</sub>(E) bars bottom
- J 2-#5 h<sub>22</sub>(E) bars E.F.
- K 1-#5 h<sub>23</sub>(E) bar E.F.
- L 5-#10 p<sub>19</sub>(E) bars top, Layer 1; See Sec. C-C
- L 5-#10 p<sub>20</sub>(E) bars top, Layer 2; See Sec. C-C
- M 2-#5 h<sub>22</sub>(E) bars E.F.
- N 5-#7 p<sub>15</sub>(E) bars bottom
- O 5 Bar Splicers for #9 h<sub>24</sub>(E) or h<sub>25</sub>(E) bars
- P 2 Bar Splicers for #5 h<sub>19</sub>(E) or h<sub>13</sub>(E) bars E.F.
- R 5 Bar Splicers for #7 p<sub>7</sub>(E) or p<sub>15</sub>(E) bars
- S 5-#9 h<sub>24</sub>(E) bars
- T 5-#9 h<sub>25</sub>(E) bars
- U 5 Mechanical Splicers for #10 p<sub>17</sub>(E) or p<sub>20</sub>(E) bars;

E.F. = Each Face



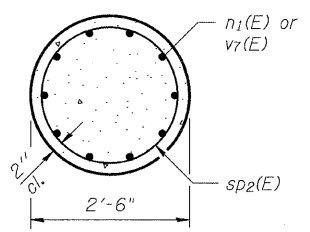
TOP PLAN

- \* Existing footing bars to be cleaned, straightened and incorporated into new construction. Cost included with Concrete Removal.
- \*\* Drill & epoxy grout into exist. conc. footing embed 9" min. See Section 584 of the Standard Specifications. Cost included with Concrete Structures.
- \*\*\* Only top row of p bars are shown for clarity.

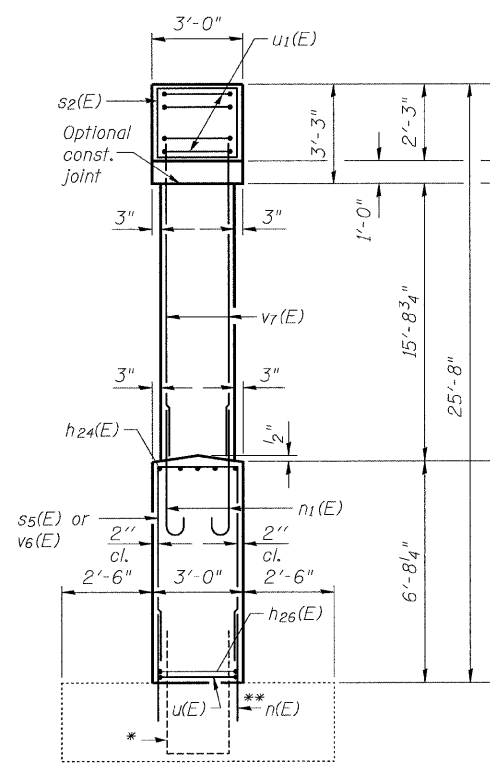


ELEVATION

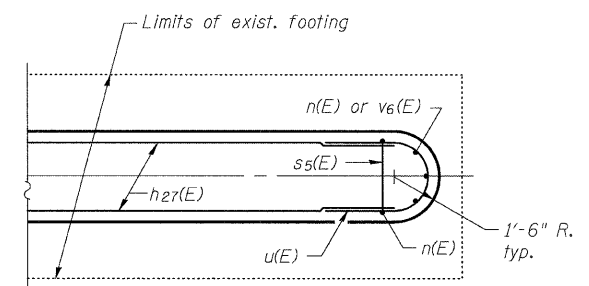
(Looking North)



SEC. D-D



END VIEW



PARTIAL FOOTING PLAN

(Showing East end)

- Notes:
- Space reinforcement in cap to miss anchor bolts.
  - The minimum allowable spacing between the mechanical splicers is 2".
  - Pour steps monolithically with cap.
  - See sheet 44 of 49 for Sections A-A, B-B & C-C.
  - See sheet 44 of 49 for Bar Details and Bill of Material.
  - See sheet 3 of 49 for Concrete Removal Details.
  - All exposed surfaces of the pier cap, columns and crashwall shall be treated with concrete sealer.

PIER 8  
STRUCTURE NO. 058-0014

**Coombe-Bloxdorf P.C.**  
 -CIVIL ENGINEERS-  
 -STRUCTURAL ENGINEERS-  
 -LAND SURVEYORS-  
 Design Firm License No. 184-002708

PROJECT NO. 07086  
 SCALE / /  
 DATE / /  
 DESIGN BY CME  
 DRAWN BY CFC  
 CHECKED BY MCB

SHEET NO. 43 49 SHEETS	F.A.P. RTE. 710	SECTION (50Z-VB)BR	COUNTY MACON	TOTAL SHEETS 79	SHEET NO. 69
	CONTRACT NO. 74215			FED. ROAD DIST. NO. 7 ILLINOIS FED. AID PROJECT	