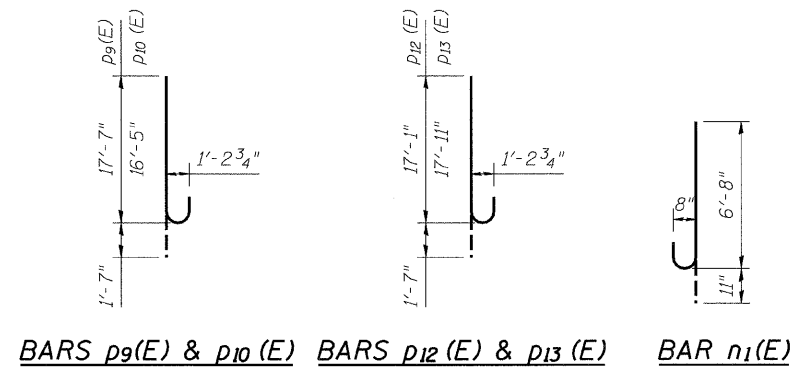
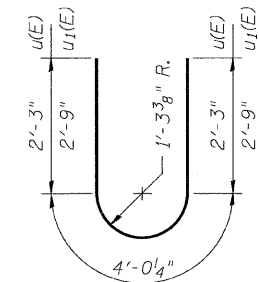


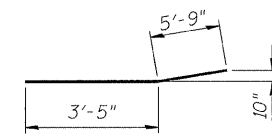
ANCHOR BOLT LOCATION DETAIL  
Typ.



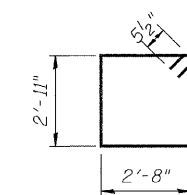
BARS  $p_9(E)$  &  $p_{10}(E)$  BARS  $p_{12}(E)$  &  $p_{13}(E)$  BAR  $n_1(E)$



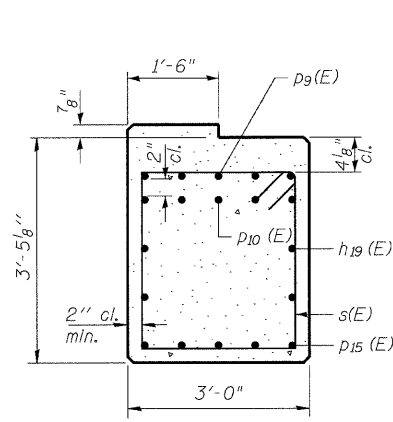
BAR  $u(E)$  &  $u_1(E)$



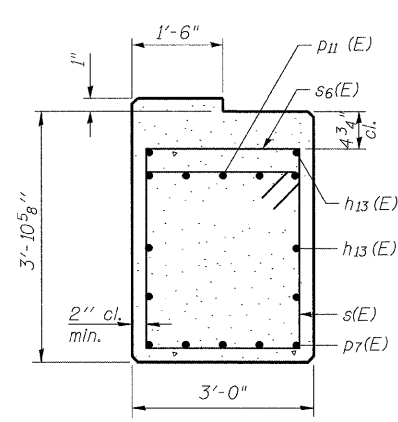
BAR  $p_{14}(E)$



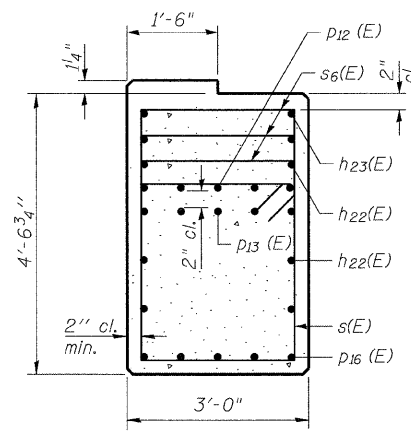
BAR  $s(E)$



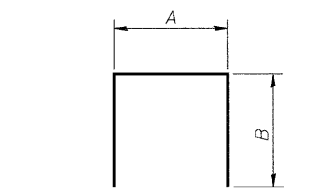
SEC. A-A



SEC. B-B



SEC. C-C



BARS  $s_2(E)$  thru  $s_4(E)$  &  $s_6(E)$

A & B DIMENSIONS

Bar	A	B
$s_2(E)$	2'-8"	2'-1"
$s_3(E)$	2'-8"	2'-4"
$s_4(E)$	2'-8"	10'-3"
$s_6(E)$	2'-8"	1'-4"

BILL OF MATERIAL

Bar	No.	Size	Length	Shape
$h_{13}(E)$	6	#5	10'-5"	—
$h_{17}(E)$	40	#6	9'-9"	—
$h_{18}(E)$	20	#6	10'-8"	—
$h_{19}(E)$	4	#5	16'-5"	—
$h_{20}(E)$	2	#5	6'-0"	—
$h_{21}(E)$	2	#5	4'-3"	—
$h_{22}(E)$	8	#5	18'-0"	—
$h_{23}(E)$	2	#5	10'-4"	—
$h_{24}(E)$	10	#9	9'-9"	—
$h_{25}(E)$	5	#9	10'-8"	—
$n(E)$	70	#6	3'-11"	—
$n_1(E)$	50	#8	7'-7"	—
$p_7(E)$	5	#7	10'-5"	—
$p_9(E)$	5	#11	19'-2"	—
$p_{10}(E)$	5	#11	18'-0"	—
$p_{11}(E)$	5	#11	10'-9"	—
$p_{12}(E)$	5	#11	18'-8"	—
$p_{13}(E)$	5	#11	19'-6"	—
$p_{14}(E)$	10	#7	9'-2"	—
$p_{15}(E)$	5	#7	10'-8"	—
$p_{16}(E)$	5	#7	12'-2"	—
$s(E)$	48	#5	12'-1"	□
$s_2(E)$	28	#5	6'-10"	□
$s_3(E)$	28	#5	7'-4"	□
$s_4(E)$	32	#6	23'-2"	□
$s_6(E)$	73	#4	5'-4"	□
$sp_1(E)$	5	#4	13'-4"	≡
$u(E)$	22	#6	8'-7"	—
$u_1(E)$	11	#6	9'-7"	—
$v_4(E)$	6	#6	10'-3"	—
$v_5(E)$	50	#8	16'-0"	—
Concrete Structures		Cu. Yd.	71.9	
Reinforcement Bars, Epoxy Coated		Pound	12330	
Bar Splicers		Each	68	
Mechanical Splicers		Each	10	
Structure Excavation		Cu. Yd.	21	
Concrete Sealer		Sq. Ft.	1767	
Concrete Removal		Cu. Yd.	71.7	
Temporary Support System Location No. 2		Each	1	

\* Length is height of spiral.

Note:  
The Contractor shall verify the length of the  $p_9(E)$ ,  $p_{11}(E)$  and  $p_{12}(E)$  bars to assure they are satisfactory with the type of mechanical splicers used.

**CB** Coombe-Bloxdorf P.C.  
-CIVIL ENGINEERS-  
-STRUCTURAL ENGINEERS-  
-LAND SURVEYORS-  
Design Firm License No. 184-002703

PROJECT NO.	07086
SCALE	
DATE	/ /
DESIGN BY	CME
DRAWN BY	CFC
CHECKED BY	MCB

PIER 6  
STRUCTURE NO. 058-0014

SHEET NO. 42 49 SHEETS	F.A.P. RTE.	SECTION	COUNTY	TOTAL SHEETS	SHEET NO.
	710	(50Z-VB)BR	MACON	79	68
			CONTRACT NO. 74215		
FED. ROAD DIST. NO. 7 ILLINOIS FED. AID PROJECT					