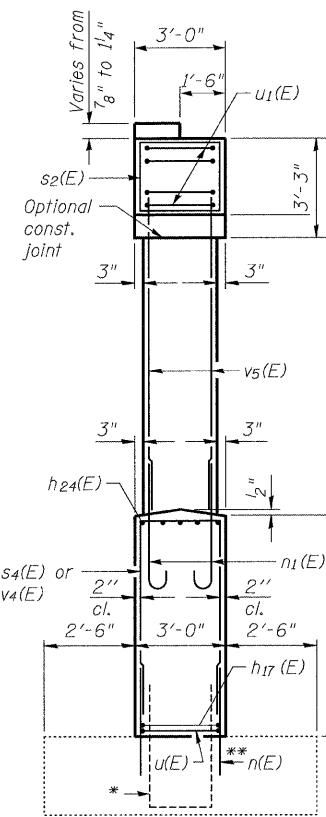


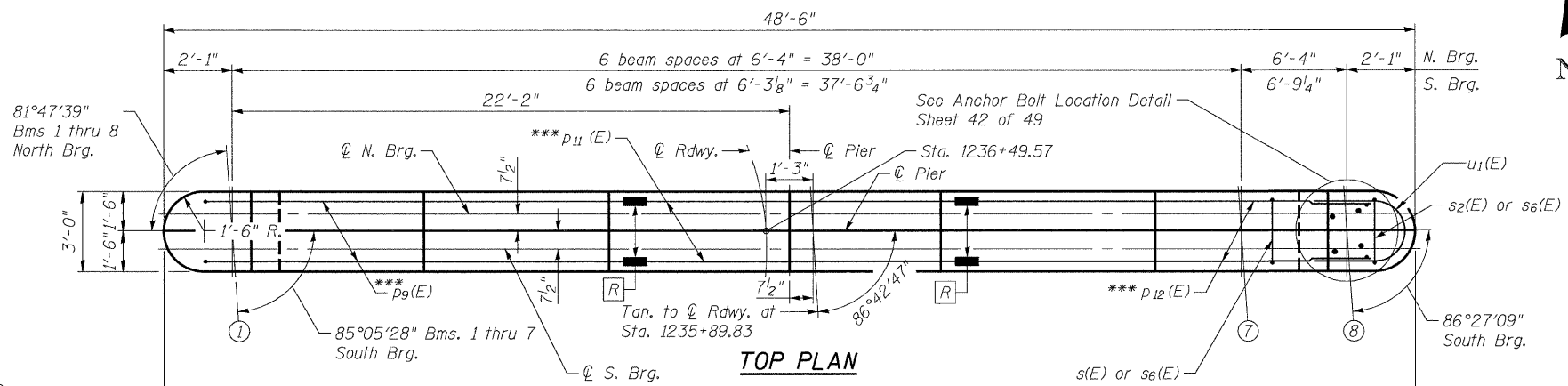
- A 5-#11 p<sub>9</sub>(E) bars top, Layer 1; See Sec. A-A
- A 5-#11 p<sub>10</sub>(E) bars top, Layer 2; See Sec. A-A
- B 2-#5 h<sub>19</sub>(E) bars E.F.
- C 5-#7 p<sub>15</sub>(E) bars bottom
- D 1-#5 h<sub>20</sub>(E) bar E.F.
- E 1-#5 h<sub>13</sub>(E) bar E.F.
- F 1-#5 h<sub>21</sub>(E) bar E.F.
- G 5-#11 p<sub>11</sub>(E) bars top; See Sec. B-B
- H 2-#5 h<sub>13</sub>(E) bars E.F.
- I 5-#7 p<sub>7</sub>(E) bars bottom
- J 2-#5 h<sub>22</sub>(E) bars E.F.
- K 1-#5 h<sub>23</sub>(E) bar E.F.
- L 5-#11 p<sub>12</sub>(E) bars top, Layer 1; See Sec. C-C
- L 5-#11 p<sub>13</sub>(E) bars top, Layer 2; See Sec. C-C
- M 2-#5 h<sub>22</sub>(E) bars E.F.
- N 5-#7 p<sub>16</sub>(E) bars bottom
- O 5 Bar Splicers for #9 h<sub>24</sub>(E) or h<sub>25</sub>(E) bars
- P 2 Bar Splicers for #5 h<sub>19</sub>(E) or h<sub>13</sub>(E) bars E.F.
- R 5 Bar Splicers for #7 p<sub>7</sub>(E) or p<sub>15</sub>(E) bars
- S 5-#9 h<sub>24</sub>(E) bars
- T 5-#9 h<sub>25</sub>(E) bars
- U 5 Mechanical Splicers for #11 p<sub>9</sub>(E) or p<sub>11</sub>(E) bars;

E.F. = Each Face

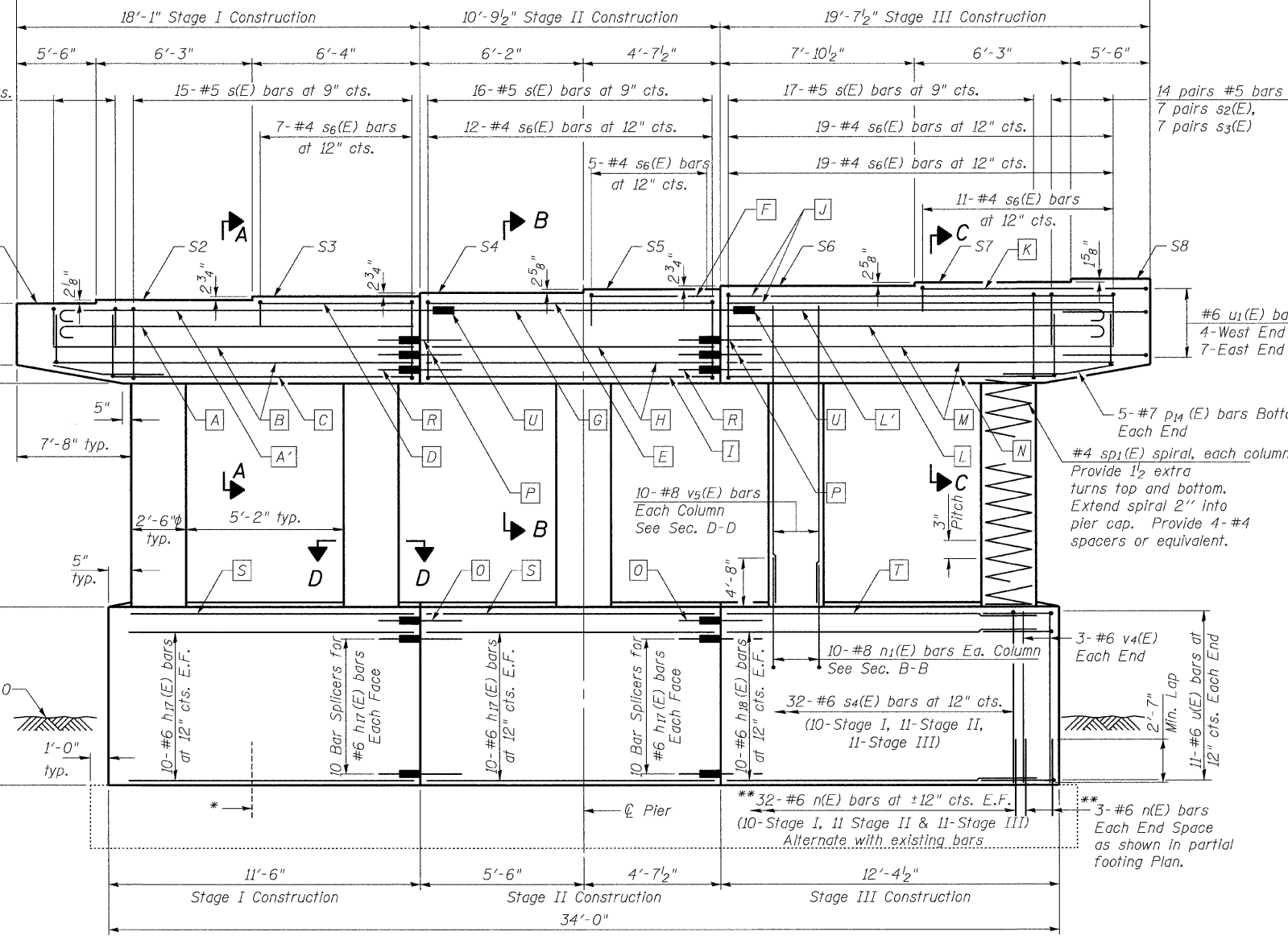
14 pairs #5 bars at 5" cts.  
7 pairs s<sub>2</sub>(E),  
7 pairs s<sub>3</sub>(E)



END VIEW



TOP PLAN



ELEVATION

(Looking North)

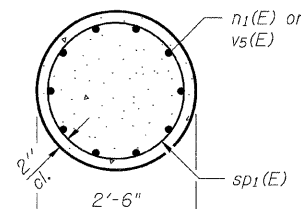
STEP ELEVATIONS

Location	S1	S2	S3	S4	S5	S6	S7	S8
South Brg.	701.55	701.73	701.96	702.19	702.41	702.64	702.86	703.00
North Brg.	701.62	701.80	702.04	702.27	702.51	702.74	702.96	703.09

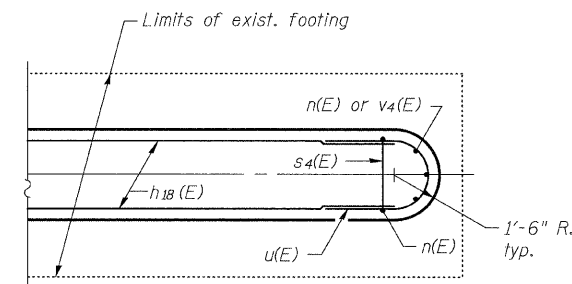
\* Existing footing bars to be cleaned, straightened and incorporated into new construction. Cost included with Concrete Removal.

\*\* Drill & epoxy grout into exist. conc. footing embed 9" min. See Section 584 of the Standard Specifications. Cost included with Concrete Structures.

\*\*\* Only top row of p bars are shown for clarity.



SEC. D-D



PARTIAL FOOTING PLAN  
(Showing East end)

Notes:  
Space reinforcement in cap to miss anchor bolts. The minimum allowable spacing between the mechanical splicers is 2". Pour steps monolithically with cap. See sheet 42 of 49 for Sections A-A, B-B & C-C. See sheet 42 of 49 for Bar Details and Bill of Material. See sheet 3 of 49 for Concrete Removal Details. All exposed surfaces of the pier cap, columns and crashwall shall be treated with concrete sealer.

PIER 6  
STRUCTURE NO. 058-0014

SHEET NO. 41 49 SHEETS	F.A.P. RTE.	SECTION	COUNTY	TOTAL SHEETS	SHEET NO.
	710	(50Z-VB)BR	MACON	79	67
			CONTRACT NO. 74215		
FED. ROAD DIST. NO. 7 ILLINOIS FED. AID PROJECT					

**CB** Coombe-Bloxdorf P.C.  
-CIVIL ENGINEERS-  
-STRUCTURAL ENGINEERS-  
-LAND SURVEYORS-  
Design Firm License No. 184-002703

PROJECT NO. 07086  
SCALE / /  
DATE / /  
DESIGN BY / /  
DRAWN BY CME  
CHECKED BY CFC  
M.C.B.