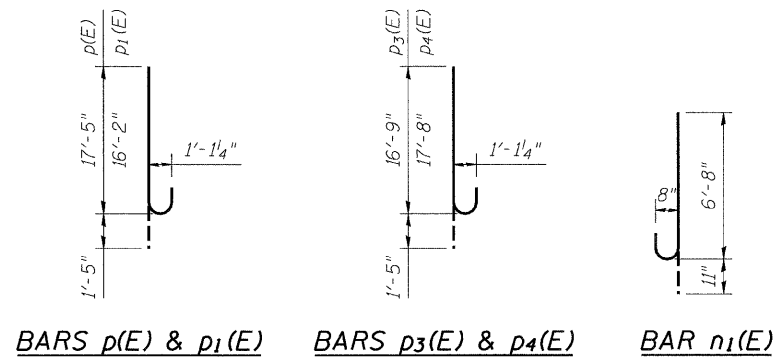
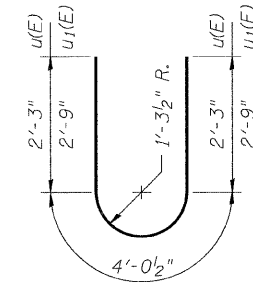


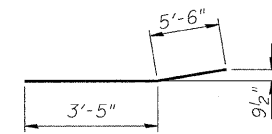
ANCHOR BOLT LOCATION DETAIL
Typical



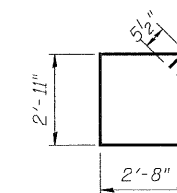
BARS $p(E)$ & $p_1(E)$ BARS $p_3(E)$ & $p_4(E)$ BAR $n_1(E)$



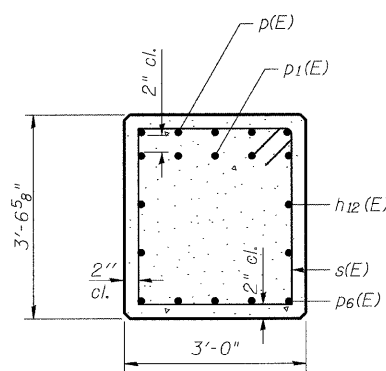
BARS $u(E)$ & $u_1(E)$



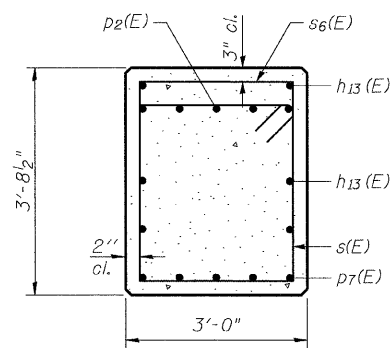
BAR $p_5(E)$



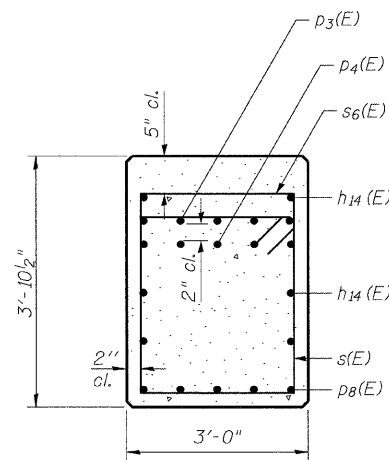
BAR $s(E)$



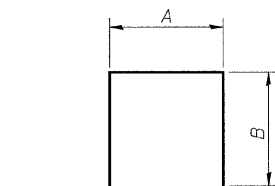
SEC. A-A



SEC. B-B



SEC. C-C



BARS $s_1(E)$ thru $s_3(E)$ & $s_6(E)$

A & B DIMENSIONS

Bar	A	B
$s_1(E)$	2'-8"	10'-8"
$s_2(E)$	2'-8"	2'-1"
$s_3(E)$	2'-8"	2'-4"
$s_6(E)$	2'-8"	1'-4"

BILL OF MATERIAL

Bar	No.	Size	Length	Shape
$h_{12}(E)$	4	#5	16'-2"	—
$h_{13}(E)$	6	#5	10'-5"	—
$h_{14}(E)$	6	#5	17'-8"	—
$h_{15}(E)$	10	#8	9'-9"	—
$h_{16}(E)$	5	#8	10'-8"	—
$h_{17}(E)$	40	#6	9'-9"	—
$h_{18}(E)$	20	#6	10'-8"	—
$n(E)$	70	#6	3'-11"	—
$n_1(E)$	50	#8	7'-7"	—
$p(E)$	5	#10	18'-10"	—
$p_1(E)$	5	#10	17'-7"	—
$p_2(E)$	5	#10	10'-9"	—
$p_3(E)$	5	#10	18'-2"	—
$p_4(E)$	5	#10	19'-1"	—
$p_5(E)$	10	#7	8'-11"	—
$p_6(E)$	5	#7	10'-8"	—
$p_7(E)$	5	#7	10'-5"	—
$p_8(E)$	5	#7	12'-2"	—
$s(E)$	36	#5	12'-1"	□
$s_1(E)$	32	#6	24'-0"	U
$s_2(E)$	20	#5	6'-10"	U
$s_3(E)$	24	#5	7'-4"	U
$s_6(E)$	31	#4	5'-4"	U
* $sp(E)$	5	#4	12'-10"	W
$u(E)$	22	#6	8'-7"	U
$u_1(E)$	9	#6	9'-7"	U
$v_2(E)$	6	#6	10'-8"	—
$v_3(E)$	50	#8	15'-6"	—
Concrete Structures	Cu. Yd.		71.4	
Reinforcement Bars, Epoxy Coated	Pound		11170	
Bar Splicers	Each		68	
Mechanical Splicers	Each		10	
Structure Excavation	Cu. Yd.		21	
Concrete Sealer	Sq. Ft.		1736	
Concrete Removal	Cu. Yd.		69.6	
Temporary Support System Location No. 1	Each		1	

* Length is height of spiral.

Note:
The Contractor shall verify the length of the $p(E)$, $p_2(E)$ and $p_3(E)$ bars to assure they are satisfactory with the type of mechanical splicers used.

CB Coombe-Bloxdorf P.C.
-CIVIL ENGINEERS-
-STRUCTURAL ENGINEERS-
-LAND SURVEYORS-
Design Firm License No. 184-002703

PROJECT NO.	07086
SCALE	
DATE	/ /
DESIGN BY	CME
DRAWN BY	CFC
CHECKED BY	MCB

**PIER 5
STRUCTURE NO. 058-0014**

SHEET NO. 40 49 SHEETS	F.A.P. RTE.	SECTION	COUNTY	TOTAL SHEETS	SHEET NO.
	710	(50Z-VB)BR	MACON	79	66
			CONTRACT NO. 74215		
FED. ROAD DIST. NO. 7 ILLINOIS FED. AID PROJECT					