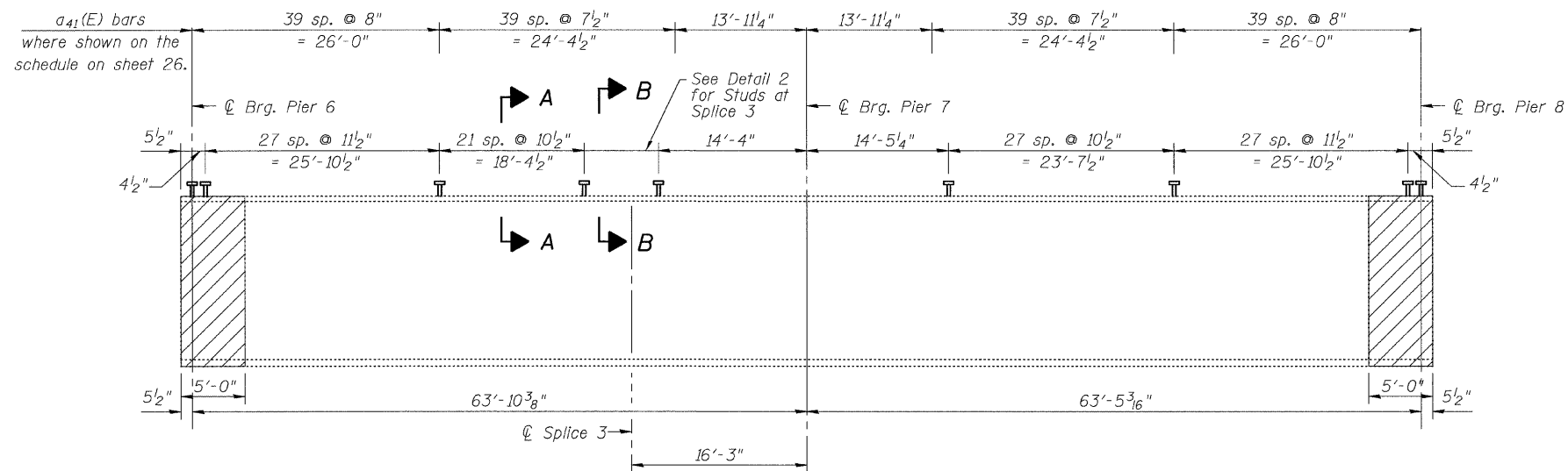
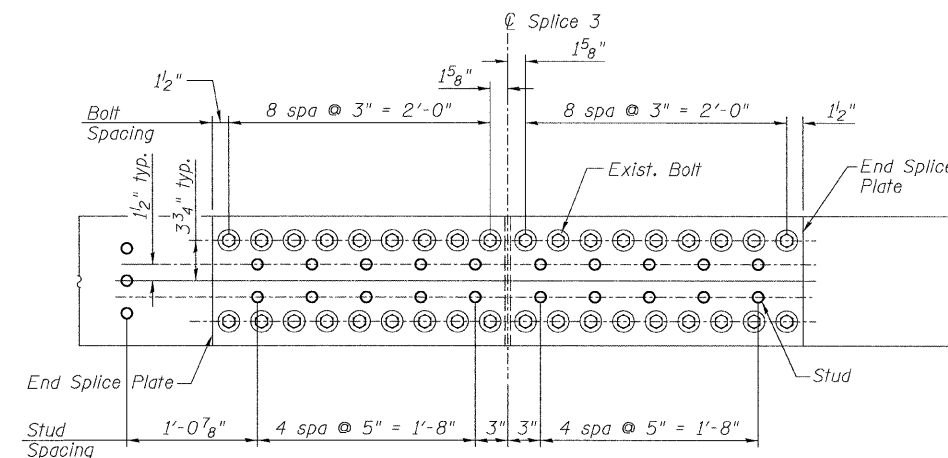


STATE OF ILLINOIS
DEPARTMENT OF TRANSPORTATION

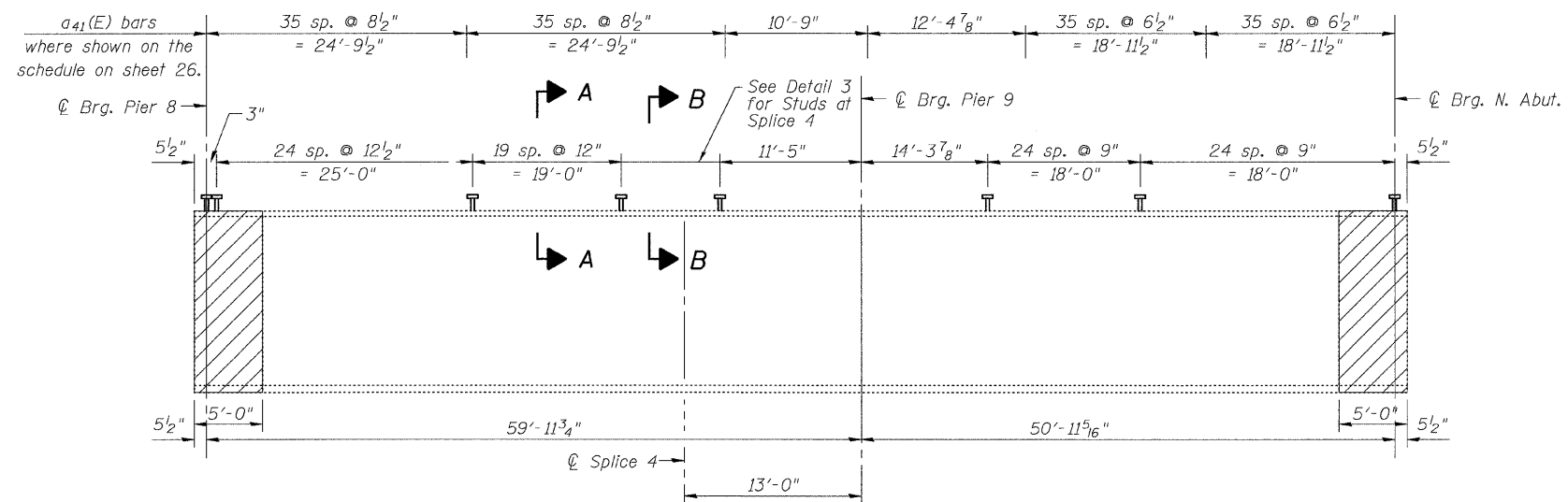


GIRDER ELEVATION - UNIT 3 (SPANS 7-8)

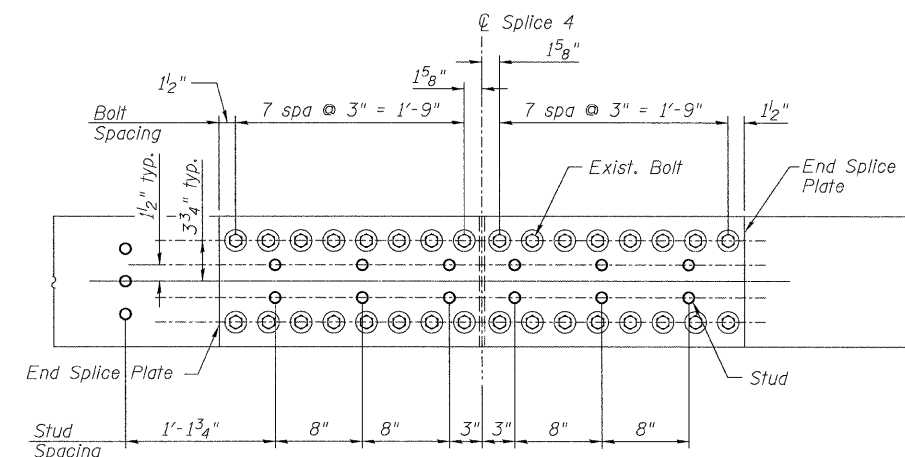
Length at End of Girder to be Cleaned and Painted



DETAIL 2



GIRDER ELEVATION - UNIT 4 (SPANS 9-10)



DETAIL 3

GIRDER ELEVATION
STRUCTURE NO. 058-0014

DESIGNED - MJB/MAJ
CHECKED - JFS
DRAWN - MSJ/MLB
CHECKED - MJB

G-1 10-1-08

Foth
Foth Infrastructure & Environment, LLC
1610 Broadmead Drive
Champaign, IL 61821
Phone: 217-352-4169 Fax: 217-352-0085
Illinois Registration Number 184-004813

SHEET NO. 27 49 SHEETS	F.A. RTE.	SECTION	COUNTY	TOTAL SHEETS	SHEET NO.
	710	(50Z-VB)BR	MACON	79	53
FED. ROAD DIST. NO.			ILLINOIS FED. AID PROJECT		
CONTRACT NO. 74215					