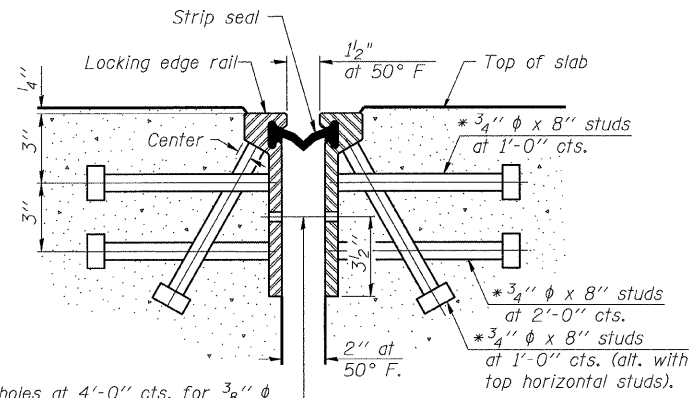


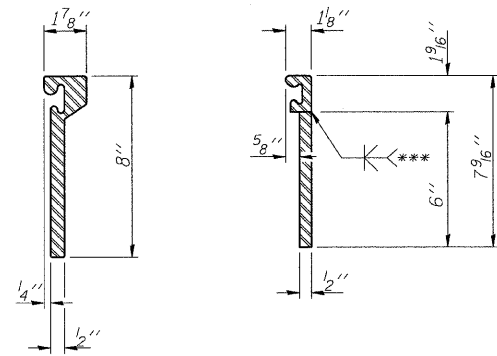
STATE OF ILLINOIS
DEPARTMENT OF TRANSPORTATION

* Granular or solid flux filled headed studs conforming to Article 1006.32 of the Std. Specs., automatically end welded.



7/16" ϕ holes at 4'-0" cts. for 3/8" ϕ bolts. All bolts shall be burned, sawed, or chipped off flush with the plates after forms are removed, typ.

SECTION THRU
ROLLED RAIL JOINT

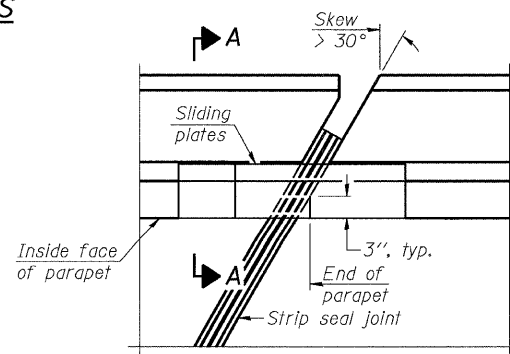


ROLLED
EXTRUDED RAIL WELDED RAIL

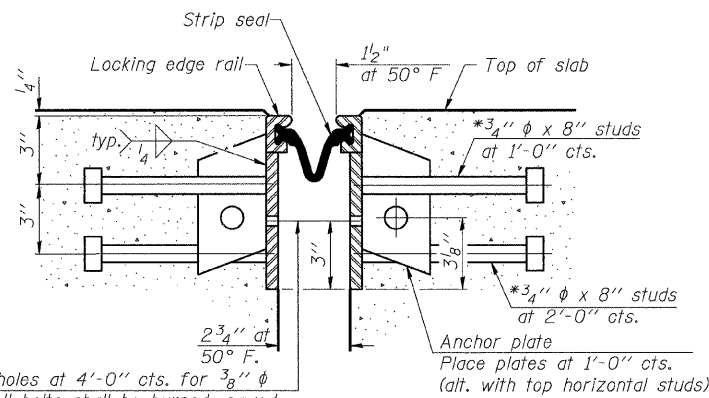
LOCKING EDGE
RAIL SPLICE

The inside of the locking edge rail groove shall be free of weld residue.

LOCKING EDGE RAILS

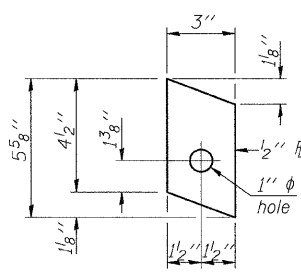


PLAN

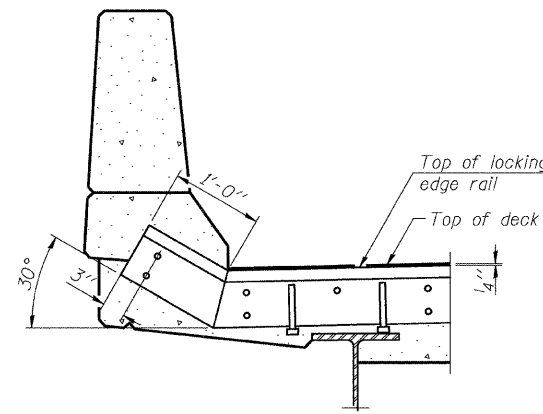


7/16" ϕ holes at 4'-0" cts. for 3/8" ϕ bolts. All bolts shall be burned, sawed, or chipped off flush with the plates after forms are removed, typ.

SECTION THRU
WELDED RAIL JOINT

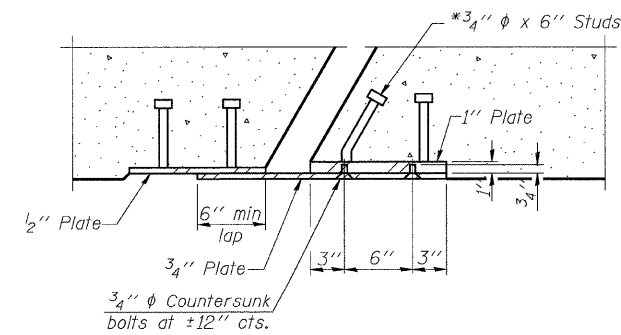


ANCHOR PLATE
(for welded rail)

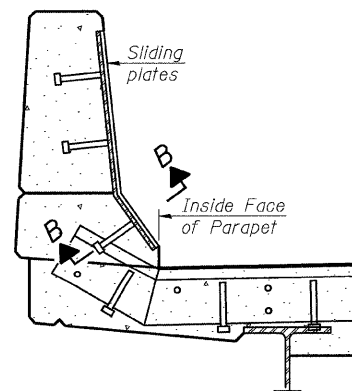


AT PARAPET

TYPICAL END TREATMENTS



SECTION B-B



SECTION A-A

POINT BLOCK DETAILS
(for skews > 30°)

BILL OF MATERIAL

Item	Unit	Total
Preformed Joint Strip Seal	Foot	243

PREFORMED JOINT STRIP SEAL
STRUCTURE NO. 058-0014

DESIGNED - MJB/MAJ
CHECKED - JFS
DRAWN - MSJ/MLB
CHECKED - MJB

EJ-SSJ 10-1-08

Foth
Foth Infrastructure & Environment, LLC
1610 Broadmoor Drive
Champaign, IL 61821
Phone: 217-352-4169 Fax: 217-352-0065
Illinois Registration Number 184-004913

SHEET NO. 23	F.A. RTE.	SECTION	COUNTY	TOTAL SHEETS	SHEET NO.
49 SHEETS	710	(50Z-VB)BR	MACON	79	49
CONTRACT NO. 74215					
FED. ROAD DIST. NO. ILLINOIS FED. AID PROJECT					