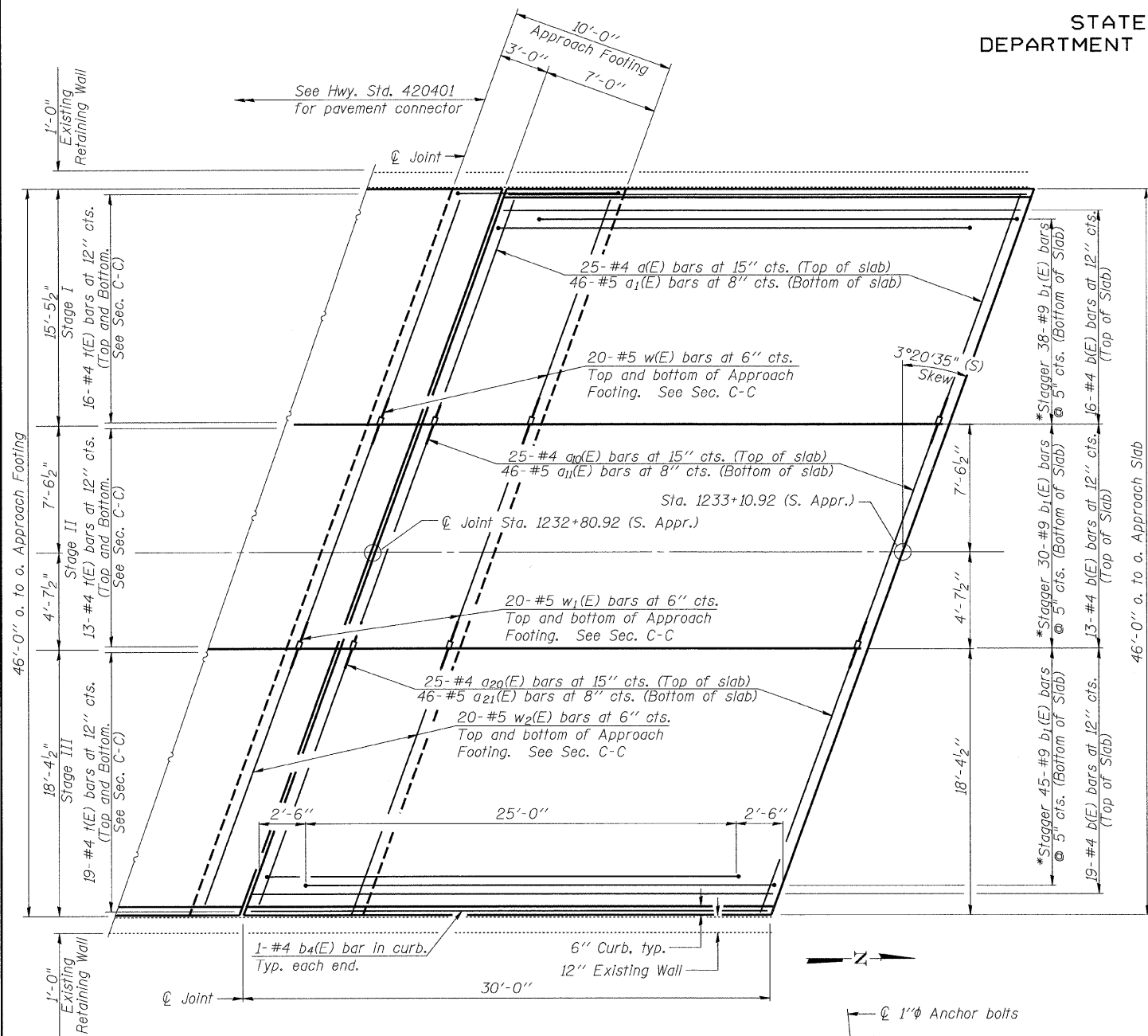


STATE OF ILLINOIS
DEPARTMENT OF TRANSPORTATION

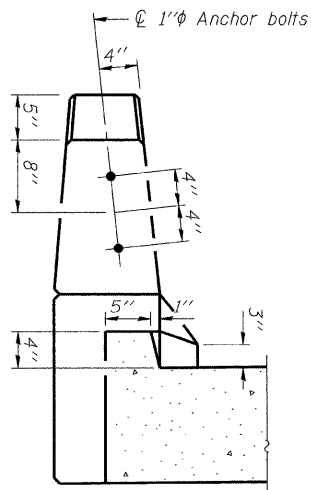


PLAN - SOUTH APPROACH SLAB

- * Tilt #9 b₁(E) bars as required to maintain clearance.
- ** Alternate with a(E) bars, typ. each parapet.

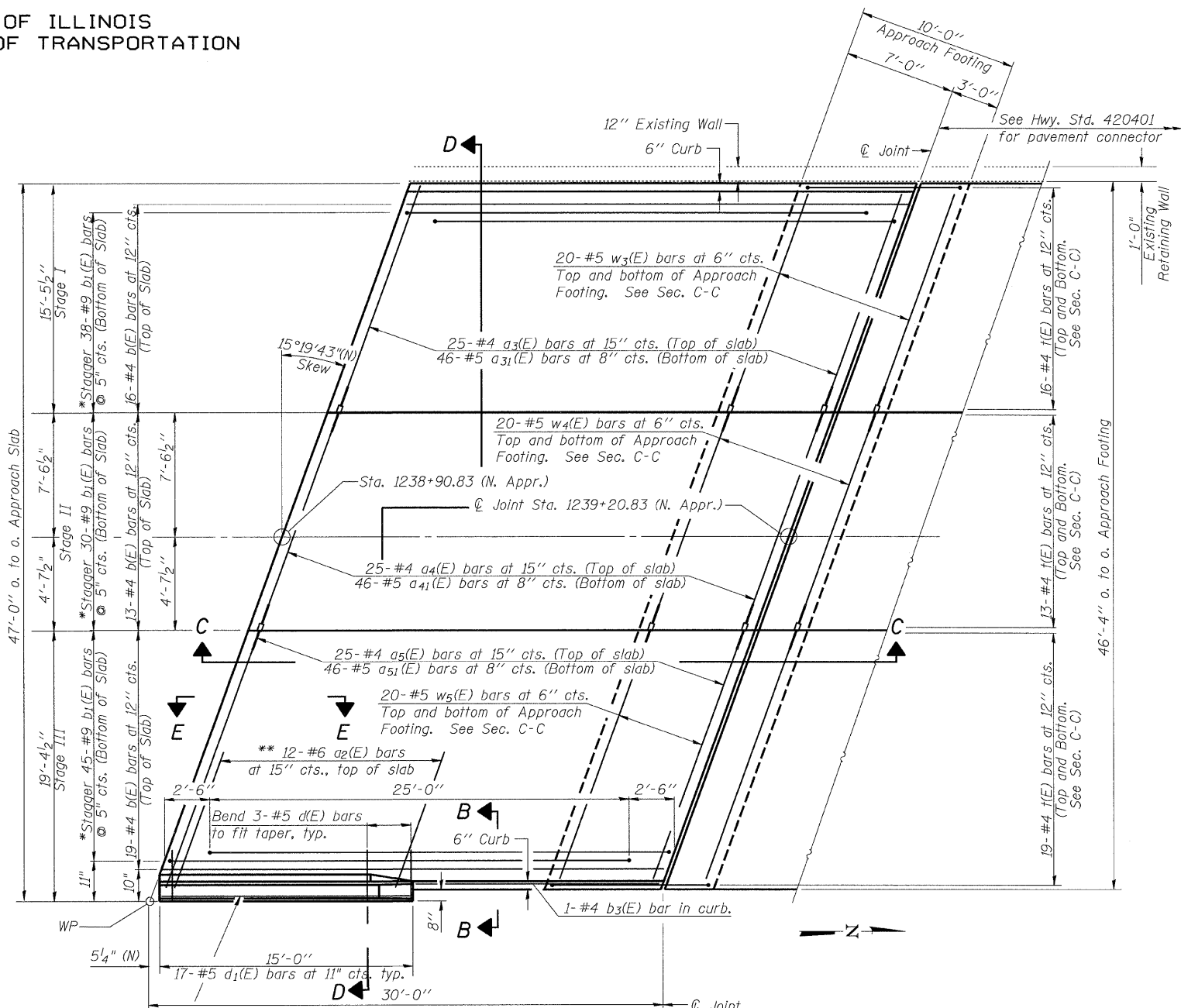
Bar Splicers (E)

25 bar splicers (E) at 15" cts. Top
46 bar splicers (E) at 8" cts. Bottom
20 bar splicers (E) at 6" cts. Top & Bottom
in approach footing
Required in Stage I & Stage II approach
slab in S. Abut. & N. Abut.



VIEW B-B

(Exit end right side only)



PLAN - NORTH APPROACH SLAB

- * Tilt #9 b₁(E) bars as required to maintain clearance.
- ** Alternate with a₅(E) bars, typ. each parapet.

Notes:
See sheet 22 of 49 for Sections C-C & D-D and View E-E.
a(E), a₁(E), and w(E) bar spacings measured perpendicular to ϕ Rdwy.

DESIGNED - MJB/MAJ
CHECKED - JFS
DRAWN - MSJ/MLB
CHECKED - MJB

BA-L

10-31-08



SHEET NO. 21
49 SHEETS

F.A. RTE.	SECTION	COUNTY	TOTAL SHEETS	SHEET NO.
710	(50Z-VB)BR	MACON	79	47
CONTRACT NO. 74215				
FED. ROAD DIST. NO. ILLINOIS FED. AID PROJECT				

(Sheet 1 of 2)
BRIDGE APPROACH SLAB DETAILS
STRUCTURE NO. 058-0014