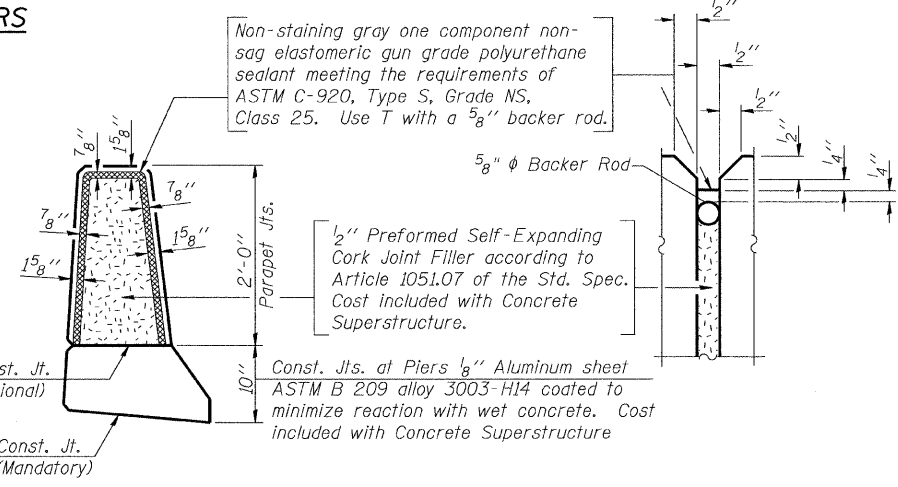
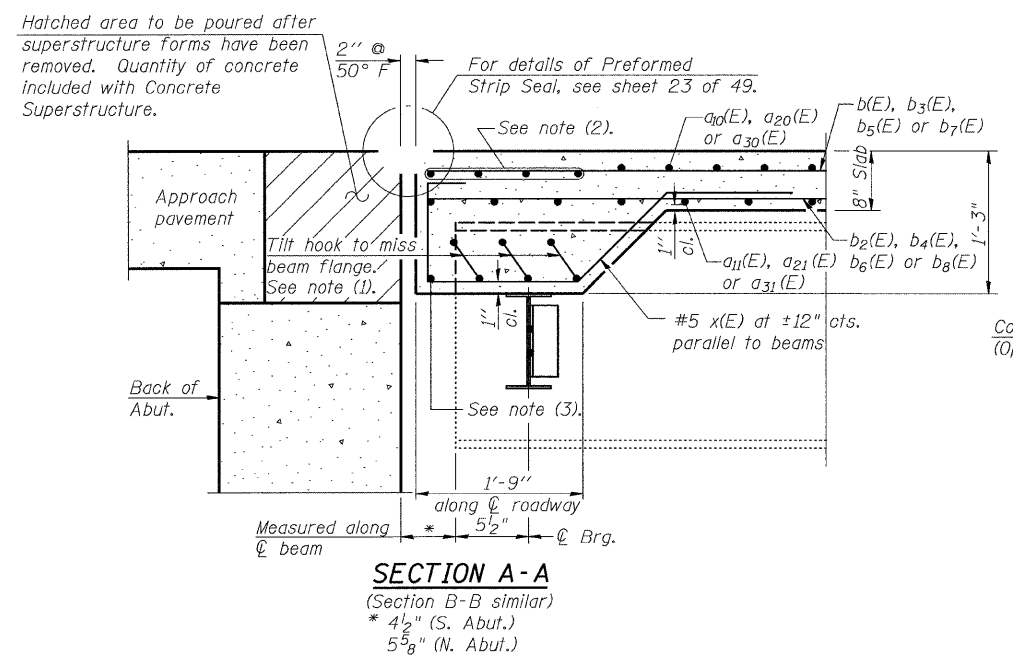
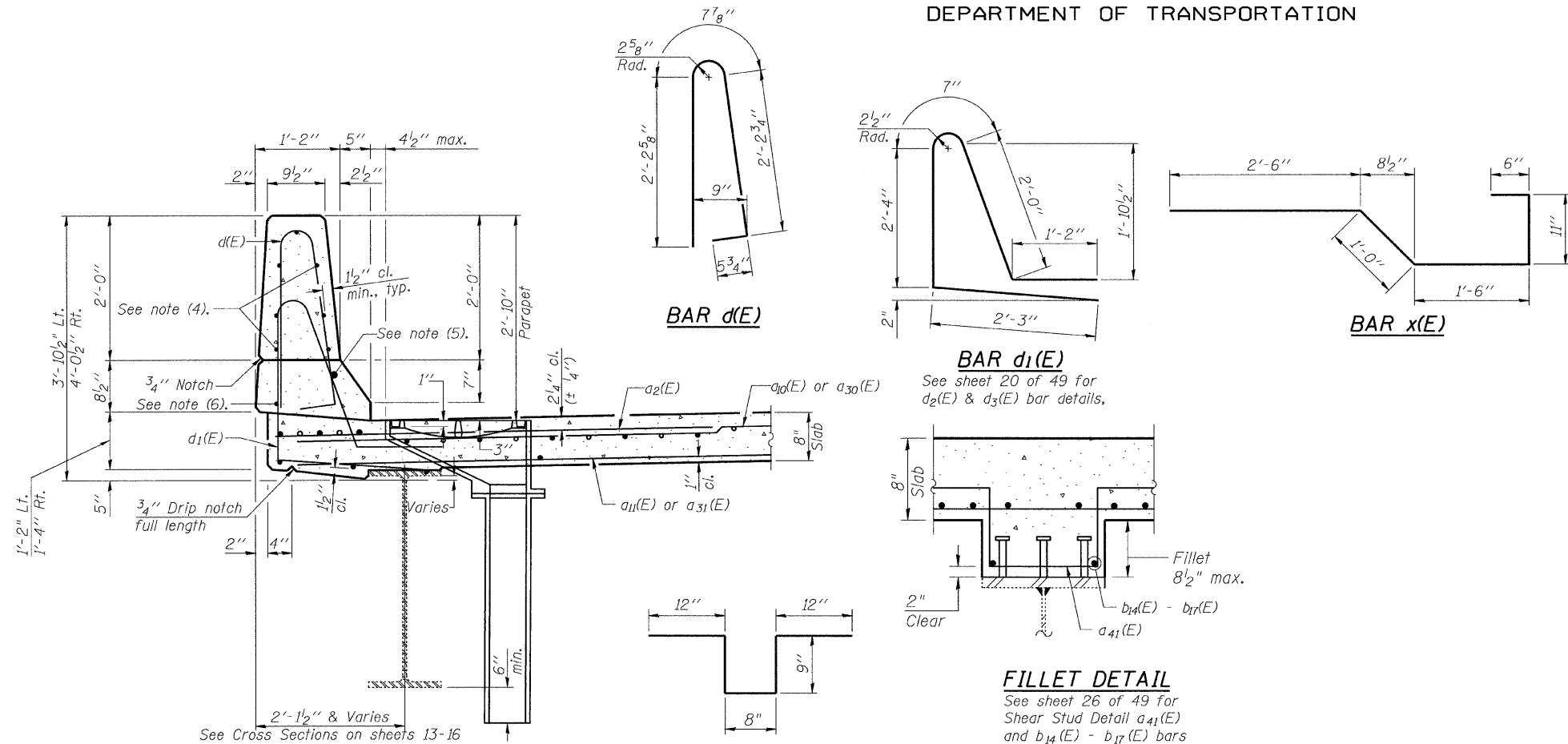


STATE OF ILLINOIS
DEPARTMENT OF TRANSPORTATION

SUPERSTRUCTURE
BILL OF MATERIAL

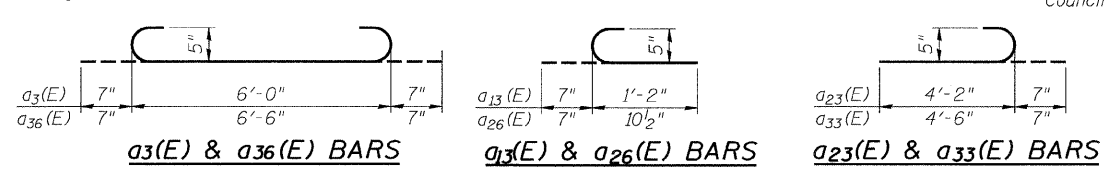
SUPERSTRUCTURE
BILL OF MATERIAL (CON'T)

Bar	No.	Size	Length	Shape
a ₂ (E)	778	#6	5'-0"	—
a ₃ (E)	117	#5	7'-2"	—
a ₁₀ (E)	773	#5	15'-3"	—
a ₁₁ (E)	697	#5	15'-3"	—
a ₁₃ (E)	24	#5	1'-9"	—
a ₁₄ (E)	3	#5	13'-8"	—
a ₁₅ (E)	32	#5	15'-6"	—
a ₁₆ (E)	2	#5	13'-3"	—
a ₁₇ (E)	2	#5	13'-0"	—
a ₁₈ (E)	1	#5	13'-3"	—
a ₂₀ (E)	773	#5	11'-6"	—
a ₂₁ (E)	697	#5	11'-6"	—
a ₂₂ (E)	4	#5	12'-0"	—
a ₂₃ (E)	24	#5	4'-9"	—
a ₂₄ (E)	5	#5	11'-6"	—
a ₂₅ (E)	20	#5	11'-6"	—
a ₂₆ (E)	24	#5	1'-6"	—
a ₂₇ (E)	2	#5	11'-9"	—
a ₂₈ (E)	8	#5	11'-9"	—
a ₂₉ (E)	1	#5	12'-0"	—
a ₃₀ (E)	773	#5	18'-6"	—
a ₃₁ (E)	697	#5	18'-6"	—
a ₃₃ (E)	24	#5	5'-1"	—
a ₃₄ (E)	3	#5	17'-0"	—
a ₃₅ (E)	28	#5	18'-9"	—
a ₃₆ (E)	3	#5	7'-8"	—
a ₃₇ (E)	4	#5	17'-9"	—
a ₃₈ (E)	1	#5	17'-3"	—
a ₃₉ (E)	4	#5	19'-6"	—
a ₄₀ (E)	40	#5	1'-6"	—
a ₄₁ (E)	4113	#6	4'-2"	—
b(E)	520	#5	27'-7"	—
b ₁ (E)	94	#6	18'-0"	—
b ₂ (E)	451	#5	25'-4"	—
b ₃ (E)	156	#5	28'-6"	—
b ₄ (E)	164	#5	22'-0"	—
b ₅ (E)	260	#5	27'-6"	—
b ₆ (E)	246	#5	23'-3"	—
b ₇ (E)	208	#5	29'-6"	—
b ₈ (E)	205	#5	24'-0"	—
b ₁₁ (E)	94	#6	19'-6"	—
b ₁₂ (E)	47	#6	24'-6"	—
b ₁₃ (E)	47	#6	21'-0"	—
b ₁₄ (E)	26	#5	14'-6"	—
b ₁₅ (E)	32	#5	36'-0"	—
b ₁₆ (E)	16	#5	25'-6"	—
b ₁₇ (E)	92	#5	25'-9"	—
d(E)	1266	#4	5'-7"	—
d ₁ (E)	1266	#5	8'-4"	—
d ₂ (E)	18	#6	4'-5"	—
d ₃ (E)	30	#6	8'-11"	—
e(E)	14	#4	16'-0"	—
e ₁ (E)	154	#4	14'-8"	—
e ₂ (E)	4	#8	31'-0"	—
e ₃ (E)	4	#4	31'-0"	—
e ₄ (E)	64	#4	6'-8"	—
e ₅ (E)	8	#8	6'-8"	—
e ₆ (E)	8	#8	24'-1"	—
e ₇ (E)	8	#4	23'-0"	—
e ₈ (E)	64	#4	7'-5"	—
e ₉ (E)	8	#8	7'-5"	—
e ₁₀ (E)	49	#4	13'-8"	—
e ₁₁ (E)	4	#8	23'-9"	—
e ₁₂ (E)	4	#4	22'-9"	—
e ₁₄ (E)	28	#4	17'-8"	—
e ₁₅ (E)	6	#8	29'-2"	—
e ₁₆ (E)	6	#4	27'-9"	—
e ₁₇ (E)	70	#4	17'-9"	—
e ₁₈ (E)	8	#8	28'-10"	—
e ₁₉ (E)	8	#4	27'-9"	—
e ₂₀ (E)	32	#4	9'-5"	—
e ₂₁ (E)	4	#8	9'-5"	—
e ₂₂ (E)	14	#4	15'-5"	—
e ₂₃ (E)	7	#4	15'-0"	—
e ₂₄ (E)	14	#4	15'-0"	—
e ₂₅ (E)	4	#8	27'-6"	—
e ₂₆ (E)	4	#4	26'-6"	—
e ₂₇ (E)	32	#4	8'-2"	—
e ₂₈ (E)	4	#8	8'-2"	—
e ₂₉ (E)	4	#8	23'-0"	—
e ₃₀ (E)	7	#4	9'-6"	—
e ₃₁ (E)	28	#4	9'-2"	—
e ₃₂ (E)	7	#4	11'-9"	—
e ₃₃ (E)	7	#4	12'-0"	—
e ₃₄ (E)	7	#4	9'-0"	—
e ₃₅ (E)	7	#4	15'-0"	—
e ₃₆ (E)	7	#4	9'-6"	—
e ₃₇ (E)	4	#4	22'-0"	—
e ₃₈ (E)	7	#4	9'-6"	—
e ₃₉ (E)	7	#4	12'-11"	—
e ₄₀ (E)	7	#4	12'-0"	—
e ₄₁ (E)	14	#4	13'-2"	—
x(E)	368	#5	6'-5"	—
Bar Splicers		Each	3068	
Reinforcement Bars, Epoxy Coated		Pound	205310	
Concrete Superstructure		Cu. Yds.	970.7	
Bridge Deck Grooving		Sq. Yds.	2760	
Protective Coat		Sq. Yds.	3358	



- Notes:
- (1) a₃(E), a₁₃(E), a₂₃(E), a₂₆(E), a₃₃(E) or a₃₆(E).
 - (2) 4-a₁₅(E), a₂₂(E), a₂₅(E), a₂₈(E), a₃₅(E) or a₃₉(E).
 - (3) a₁₄(E), a₁₆(E), a₁₇(E), a₁₈(E), a₂₄(E), a₂₇(E), a₂₉(E), a₃₄(E), a₃₇(E) or a₃₈(E).
 - (4) e(E), e₁(E), e₄(E), e₈(E), e₁₀(E), e₁₄(E), e₁₇(E), e₂₀(E), e₂₂(E), e₂₃(E), e₂₄(E), e₂₇(E), e₃₀(E), e₃₁(E), e₃₂(E), e₃₃(E), e₃₄(E), e₃₅(E), e₃₆(E), e₃₈(E), e₃₉(E), e₄₀(E) or e₄₁(E).
 - (5) e₂(E), e₅(E), e₆(E), e₉(E), e₁₁(E), e₁₅(E), e₁₆(E), a₂₁(E), e₂₅(E), e₂₈(E) or e₂₉(E).
 - (6) e₃(E), e₄(E), e₇(E), e₈(E), e₁₂(E), e₁₈(E), e₁₉(E), a₂₀(E), e₂₆(E), e₂₇(E) or e₃₇(E).

DESIGNED - MJB/MAJ
CHECKED - JFS
DRAWN - MSJ/MLB
CHECKED - MJB



Foth
Foth Infrastructure & Environment, LLC
1610 Broadmoor Drive
Champaign, IL 61821
Phone: 217-352-4169 Fax: 217-352-0005
Illinois Registration Number 184.004913

SHEET NO. 17 49 SHEETS	F.A. RTE.	SECTION	COUNTY	TOTAL SHEETS	SHEET NO.
	710	(50Z-VB)BR	MACON	79	43
FED. ROAD DIST. NO.			ILLINOIS FED. AID PROJECT		
CONTRACT NO. 74215					

SUPERSTRUCTURE DETAILS
STRUCTURE NO. 058-0014