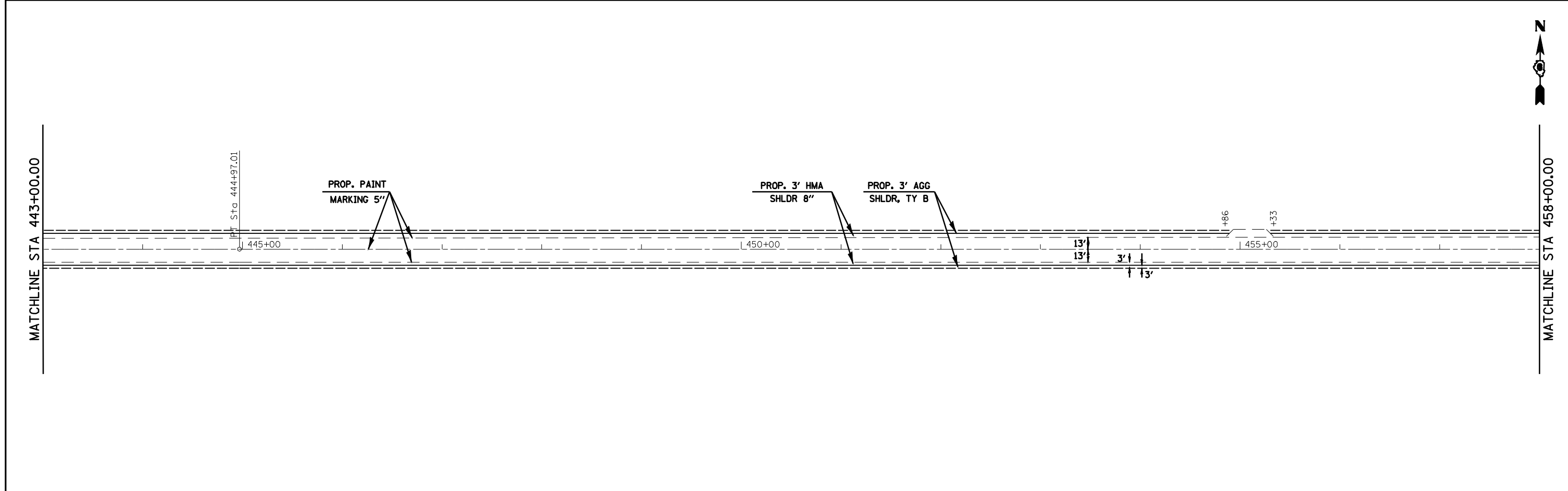


EXIST. CURVE 440
 PI STA. = 439+97.01
 $\Delta = 0^\circ 20' 49''$ (RT)
 $D = 0^\circ 02' 05''$
 $R = 165,085.89'$
 $T = 500.00'$
 $L = 1,000.00'$
 $E = 0.76'$
 $e = \text{-----}$
 $T.R. = \text{-----}$
 $S.E. \text{ RUN} = \text{-----}$
 P.C. STA. = 434+97.01
 P.T. STA. = 444+97.01
 NORMAL CROWN



FILE NAME =	USER NAME = laughlinr1	DESIGNED -	REVISED -	STATE OF ILLINOIS DEPARTMENT OF TRANSPORTATION	PLAN VIEW F.A.P. 315 (US 136)				F.A.P. RTE.	SECTION	COUNTY	TOTAL SHEETS	SHEET NO.
er:\pwwork\pwidot\LAUGHLINRL\0182895\0672061-shr-plan-50Scale.dgn		DRAWN -	REVISED -		315	(7,B)-I & (1)I-1, (2)I-2	MASON	34	29				
PLOT SCALE = 100.0000' / IN.		CHECKED -	REVISED -		SCALE: SHEET NO. OF SHEETS STA. TO STA.				CONTRACT NO. 72061				
PLOT DATE = Mar-25-2010 12:09:41PM		DATE -	REVISED -		ILLINOIS FED. AID PROJECT								