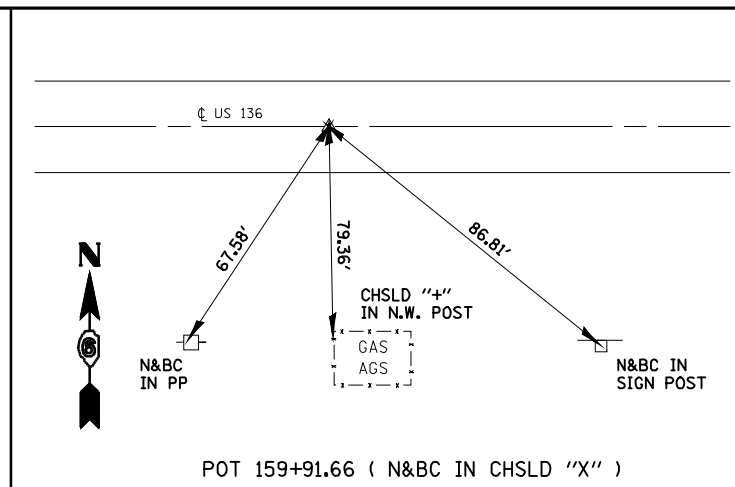
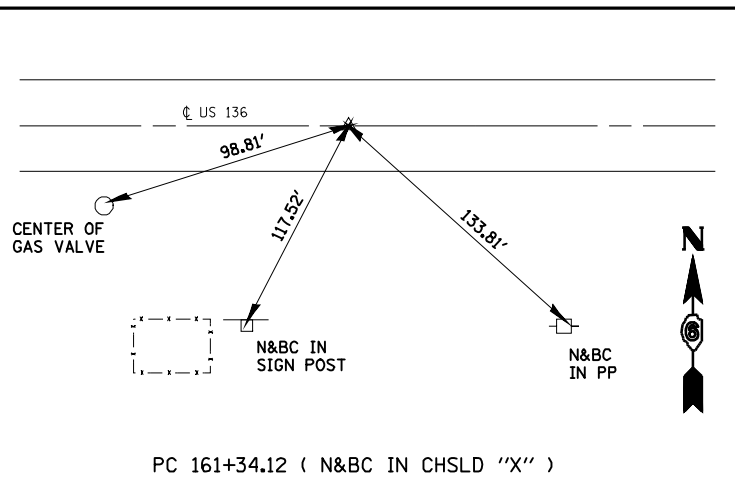


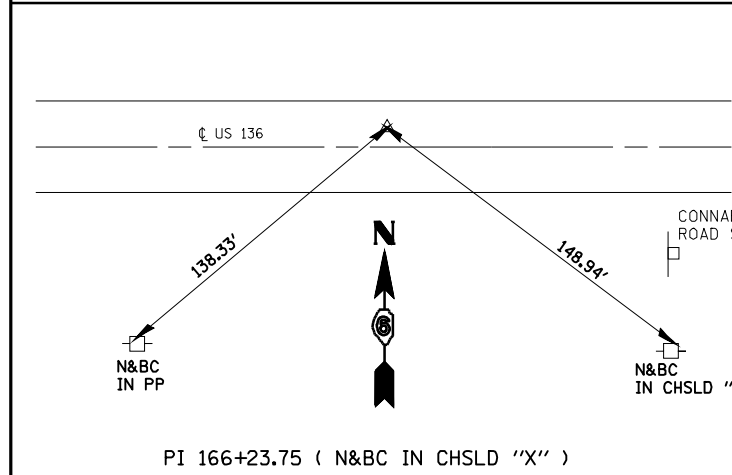
POT 155+19.18 ( N&BC IN CHSLD "X" )



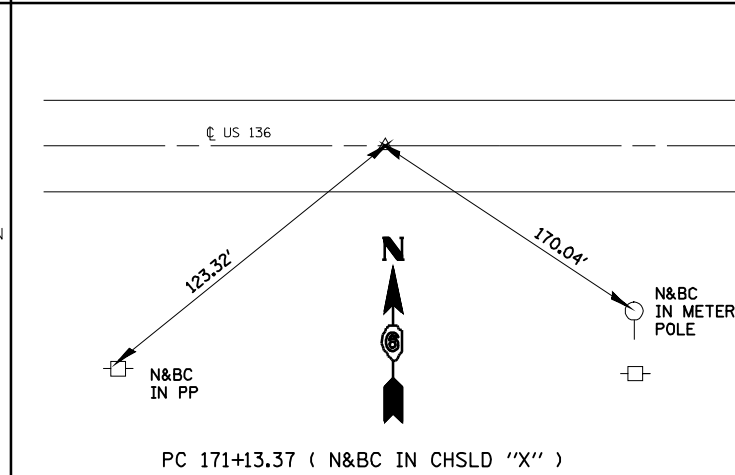
POT 159+91.66 ( N&BC IN CHSLD "X" )



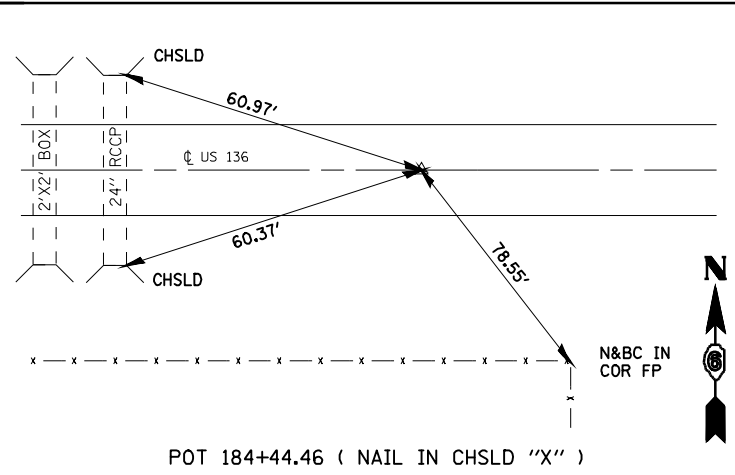
PC 161+34.12 ( N&BC IN CHSLD "X" )



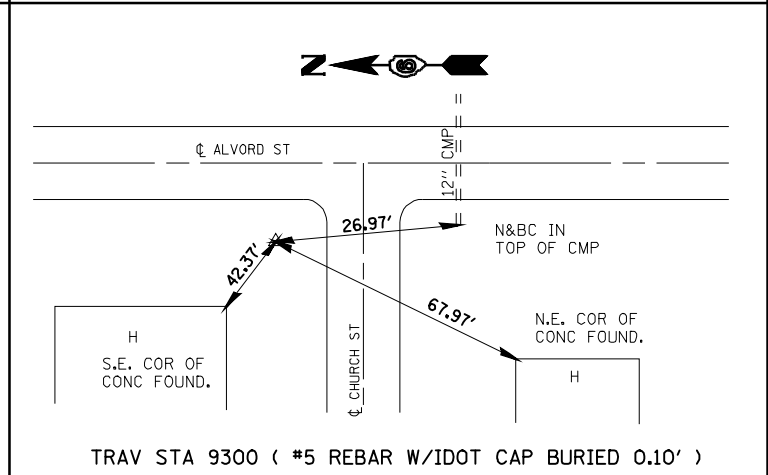
PI 166+23.75 ( N&BC IN CHSLD "X" )



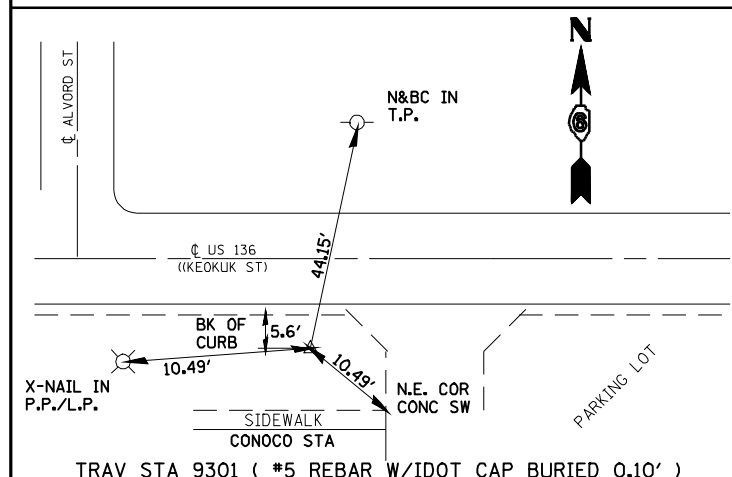
PC 171+13.37 ( N&BC IN CHSLD "X" )



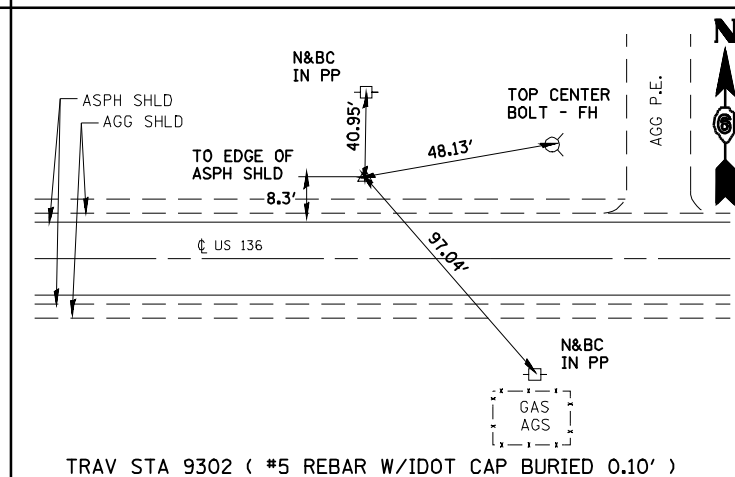
POT 184+44.46 ( NAIL IN CHSLD "X" )



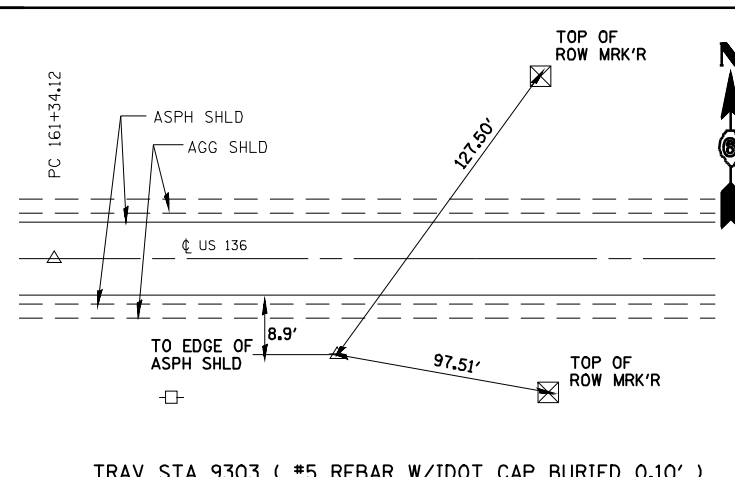
TRAV STA 9300 ( #5 REBAR W/IDOT CAP BURIED 0.10' )



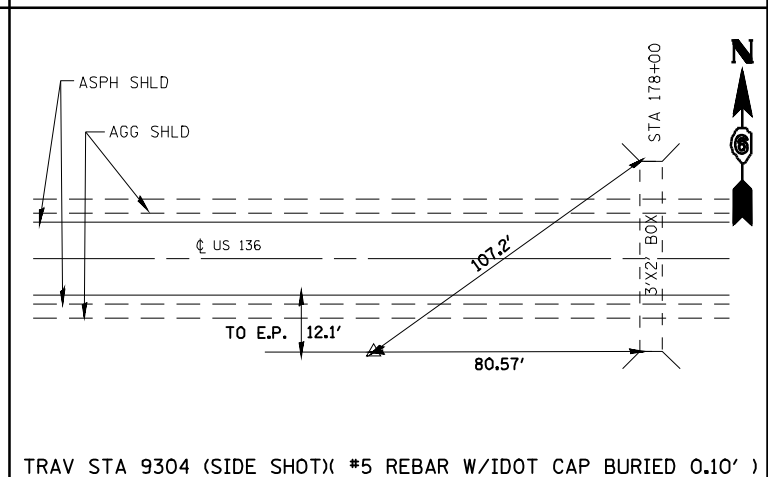
TRAV STA 9301 ( #5 REBAR W/IDOT CAP BURIED 0.10' )



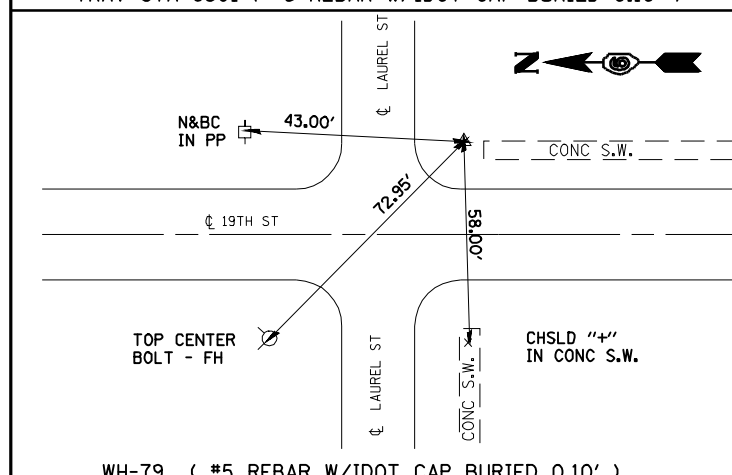
TRAV STA 9302 ( #5 REBAR W/IDOT CAP BURIED 0.10' )



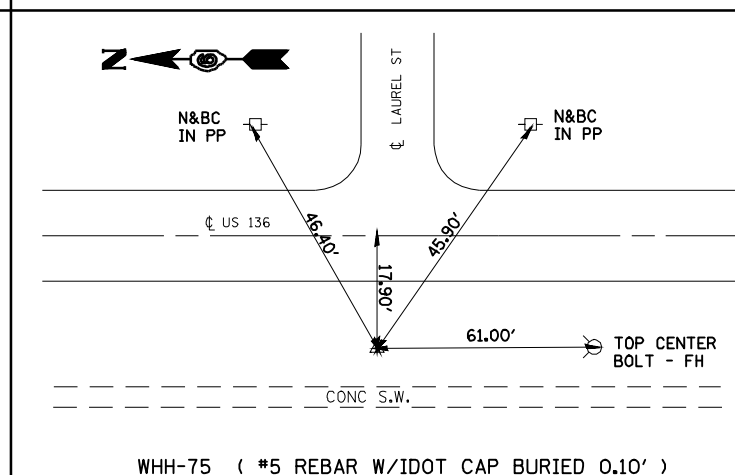
TRAV STA 9303 ( #5 REBAR W/IDOT CAP BURIED 0.10' )



TRAV STA 9304 (SIDE SHOT) ( #5 REBAR W/IDOT CAP BURIED 0.10' )



WH-79 ( #5 REBAR W/IDOT CAP BURIED 0.10' )



WHH-75 ( #5 REBAR W/IDOT CAP BURIED 0.10' )

BM #32 U.S.G.S.  
CHISELED " □ " ON W. END CONCRETE STEP  
STA. 427+76.00 (RT) ELEV = 663.27'

BM #48  
CHISELED " □ " ON S. END HDWL ON R.R. CULVERT  
STA. 609+65.00 (LT) ELEV = 648.98'

FILE NAME =	USER NAME = laughlinr1
es:\pwork\PWIDOT\LAUGHLINR1\0159574\0672C63-sht-cross ties.dgn	
PLOT SCALE = 40.000' / IN.	
PLOT DATE = Apr-07-2010 08:37:56AM	

DESIGNED -	REVISED -
DRAWN -	REVISED -
CHECKED -	REVISED -
DATE -	REVISED -

**STATE OF ILLINOIS  
DEPARTMENT OF TRANSPORTATION**

CROSS-TIES AND TRAVERSE POINTS			
SCALE:	SHEET NO.	OF SHEETS	STA. TO STA.

F.A.P. RTE.	SECTION	COUNTY	TOTAL SHEETS	SHEET NO.
315	(28, 29) (RS-5)	HANCOCK	40	14
CONTRACT NO. 72C63				
ILLINOIS FED. AID PROJECT				