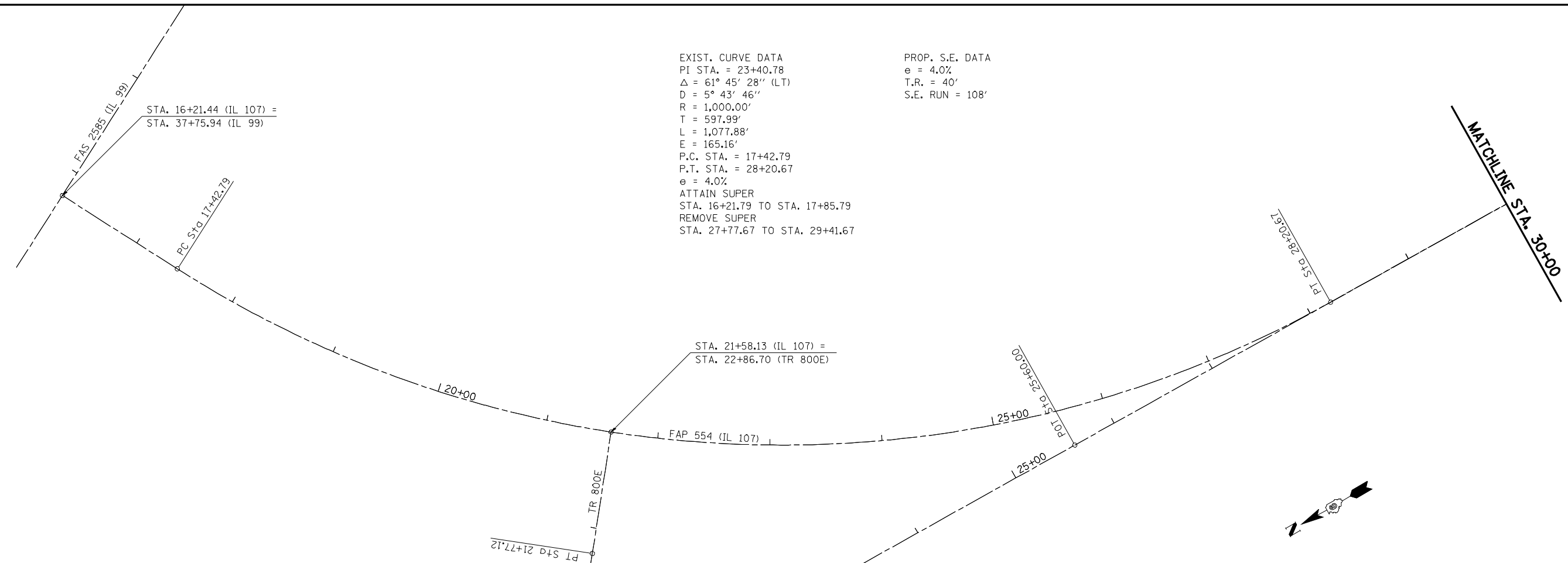


EXIST. CURVE DATA
 PI STA. = 23+40.78
 Δ = 61° 45' 28" (LT)
 D = 5° 43' 46"
 R = 1,000.00'
 T = 597.99'
 L = 1,077.88'
 E = 165.16'
 P.C. STA. = 17+42.79
 P.T. STA. = 28+20.67
 e = 4.0%
 ATTAIN SUPER
 STA. 16+21.79 TO STA. 17+85.79
 REMOVE SUPER
 STA. 27+77.67 TO STA. 29+41.67

PROP. S.E. DATA
 e = 4.0%
 T.R. = 40'
 S.E. RUN = 108'

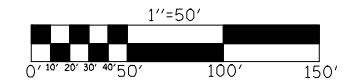
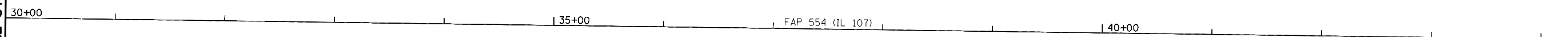
STA. 16+21.44 (IL 107) =
 STA. 37+75.94 (IL 99)

STA. 21+58.13 (IL 107) =
 STA. 22+86.70 (TR 800E)



MATCHLINE STA. 30+00

MATCHLINE STA. 45+00



FILE NAME = e:\pwwork\pwwid\LAUGHLIN\l\0200040\672C37-shr-plan.dgn	USER NAME = laughlinr1	DESIGNED -	REVISED -
	PLOT SCALE = 100.0000' / IN.	DRAWN -	REVISED -
	PLOT DATE = Apr-08-2010 03:18:35PM	CHECKED -	REVISED -
		DATE -	REVISED -

**STATE OF ILLINOIS
 DEPARTMENT OF TRANSPORTATION**

PLAN SHEET FAP 554 (ILLINOIS 107)

SCALE: 1" = 50' SHEET NO. OF SHEETS STA. 16+21.44 TO STA. 45+00

F.A.P. RTE.	SECTION	COUNTY	TOTAL SHEETS	SHEET NO.
554	16(RS-6) & 18(RS-6)	BROWN	49	16
CONTRACT NO. 72C37				
ILLINOIS FED. AID PROJECT				