

STATE OF ILLINOIS  
DEPARTMENT OF TRANSPORTATION  
DIVISION OF HIGHWAYS

**PROPOSED  
HIGHWAY PLANS**

FAP ROUTE 757 (IL 106)  
SECTION (20X)RS-5; (21X)RS-3

RESURFACING  
PIKE COUNTY

C-96-101-08

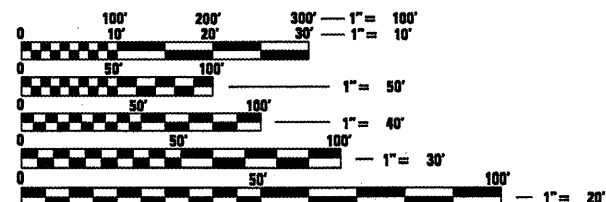
F.A.P. RTE.	SECTION	COUNTY	TOTAL SHEETS	SHEET NO.
757	(20X)RS-5; (21X)RS-3	PIKE	34	1
FED. ROAD DIST. NO.		ILLINOIS	CONTRACT NO. 72B45	

FOR INDEX OF SHEETS, SEE SHEET NO. 2

D-96-001-08

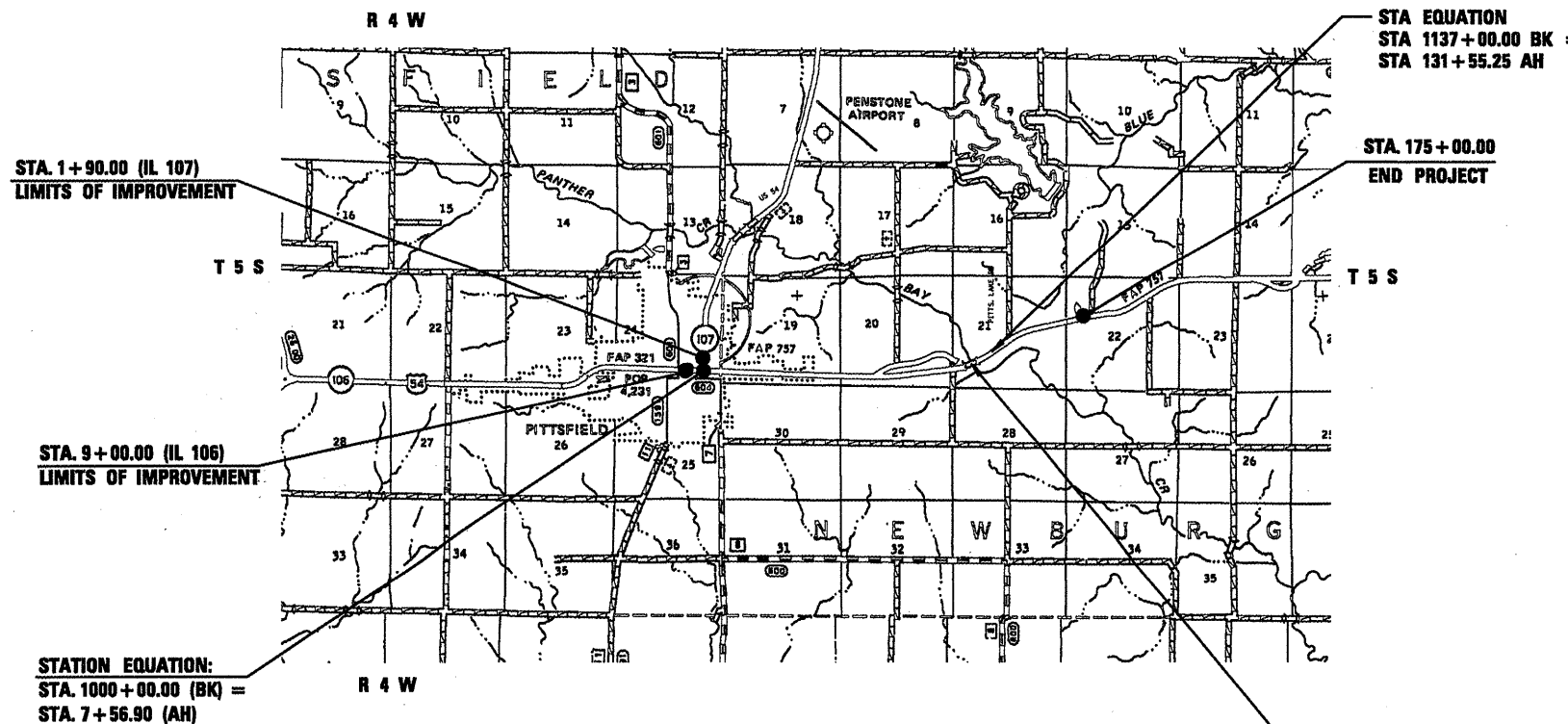


ADT 2617  
SU = 8%  
MU = 4%  
PV = 88%



FULL SIZE PLANS HAVE BEEN PREPARED USING STANDARD ENGINEERING SCALES. REDUCED SIZED PLANS WILL NOT CONFORM TO STANDARD SCALES. IN MAKING MEASUREMENTS ON REDUCED PLANS, THE ABOVE SCALES MAY BE USED.

J.U.L.I.E.  
JOINT UTILITY LOCATION INFORMATION FOR EXCAVATION  
1-800-892-0123  
OR 811



PROJECT ENGINEER: JOHN NEGANGARD (217-782-6990)  
PROJECT MANAGER: JULIET SHOULTZ (217-785-2739)

GROSS LENGTH = 18,531.20 FT. = 3.51 MILE  
NET LENGTH = 18,384.20 FT. = 3.48 MILE

CONTRACT NO. 72B45

STATE OF ILLINOIS  
DEPARTMENT OF TRANSPORTATION  
DIVISION OF HIGHWAYS

SUBMITTED April 7 2010  
Roger Z. Dinkley  
DEPUTY DIRECTOR OF HIGHWAYS, REGION ENGINEER

May 7 2010  
Scott E. Stett, P.E.  
ACTING ENGINEER OF DESIGN AND ENVIRONMENT

May 7 2010  
Christine M. Reed  
DIRECTOR OF HIGHWAYS, CHIEF ENGINEER

**PRINTED BY THE AUTHORITY  
OF THE STATE OF ILLINOIS**