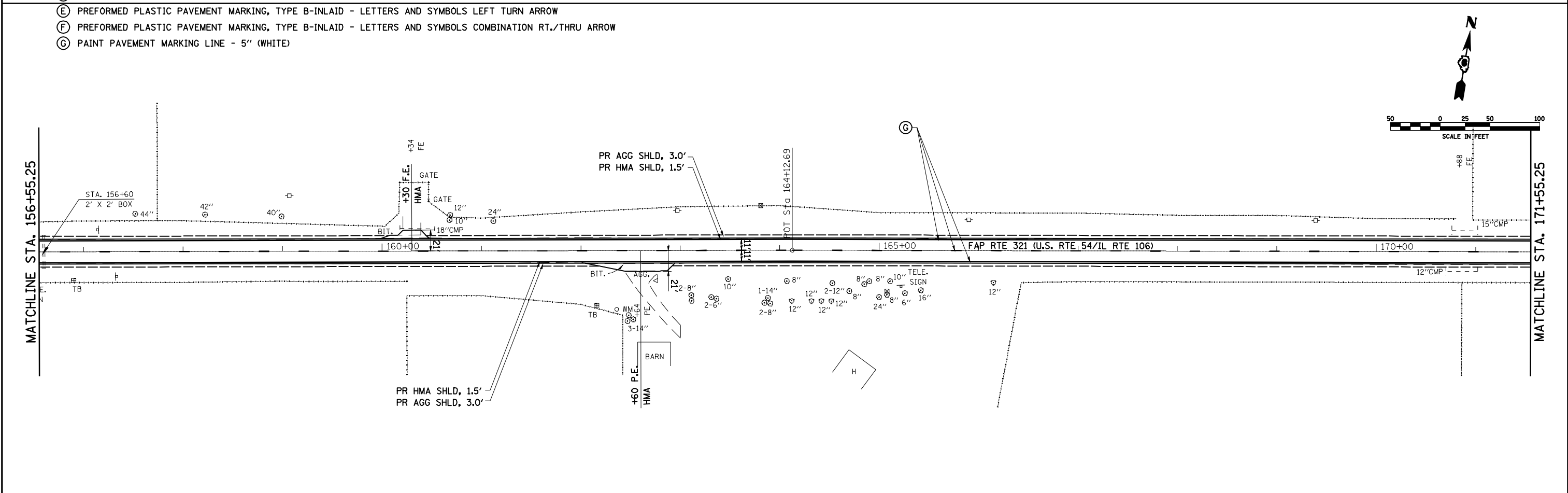


LEGEND

- (A) PREFORMED PLASTIC PAVEMENT MARKING, TYPE B-INLAID - LINE 6" (WHITE)
- (B) PREFORMED PLASTIC PAVEMENT MARKING, TYPE B-INLAID - LINE 24" (WHITE)
- (C) THERMOPLASTIC PAVEMENT MARKING - LINE 5" (DOUBLE YELLOW)
- (D) THERMOPLASTIC PAVEMENT MARKING - LINE 12" (YELLOW)
- (E) PREFORMED PLASTIC PAVEMENT MARKING, TYPE B-INLAID - LETTERS AND SYMBOLS LEFT TURN ARROW
- (F) PREFORMED PLASTIC PAVEMENT MARKING, TYPE B-INLAID - LETTERS AND SYMBOLS COMBINATION RT./THRU ARROW
- (G) PAINT PAVEMENT MARKING LINE - 5" (WHITE)



FILE NAME =	USER NAME = laughlinr1	DESIGNED -	REVISED -	STATE OF ILLINOIS DEPARTMENT OF TRANSPORTATION	PLAN & PAVEMENT MARKING SHEET - IL 106			F.A.P. RTE.	SECTION	COUNTY	TOTAL SHEETS	SHEET NO.
e:\pwwork\p\w\DOT\LAUGHLINRL\dms25724\0672845-SHT-plan-IL106B12.dgn	PLOT SCALE = 100.0000' / IN.	DRAWN -	REVISED -					757	(20X)RS-5, (21X)RS-3	PIKE	34	26
PLOT DATE = Apr-07-2010 11:39:21AM	DATE -	CHECKED -	REVISED -		CONTRACT NO. 72B45			ILLINOIS FED. AID PROJECT				
		DATE -	REVISED -		SCALE:	SHEET NO. 14 OF 15 SHEETS	STA.	TO STA.				