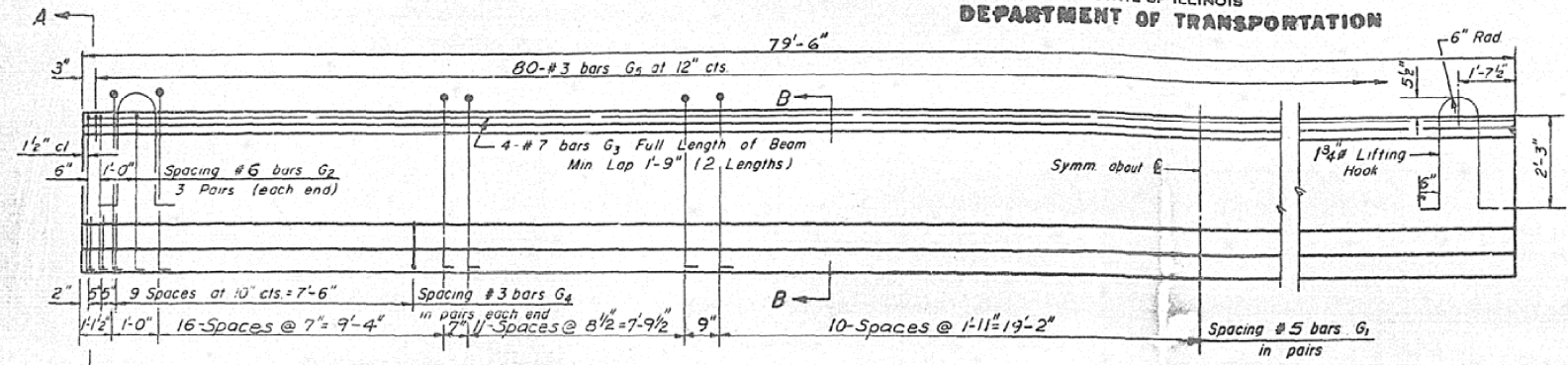


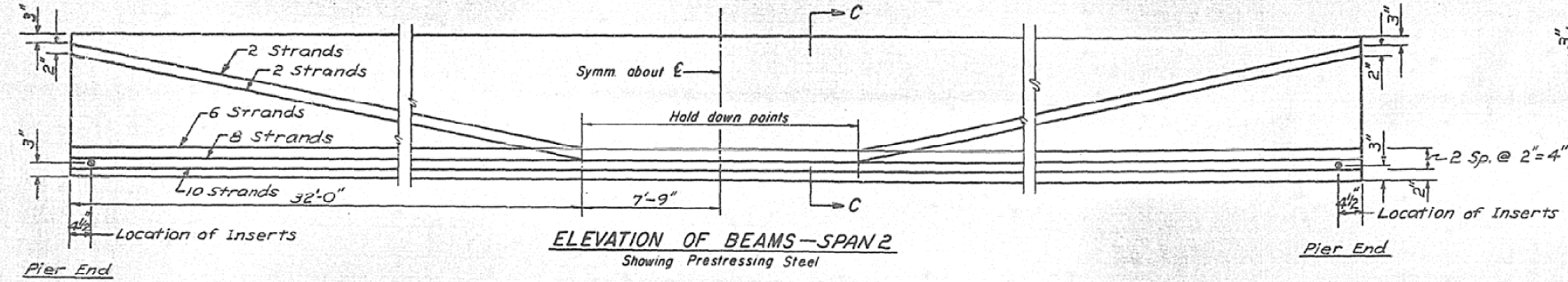
# AS-BUILT PLANS FOR INFORMATION ONLY

STATE OF ILLINOIS  
DEPARTMENT OF TRANSPORTATION

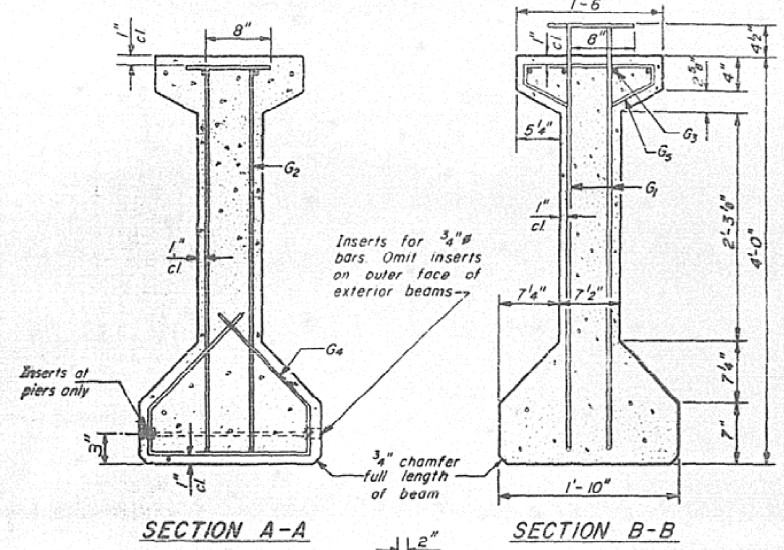
ROUTE NO.	SECTION	COUNTY	TOTAL SHEETS	SHEET NO.
65	124 BR	Dewitt	32	15
SHEET NO. 6				
15 SHEETS				



**ELEVATION OF BEAMS—SPAN 2**  
Showing Reinforcement & Dimensions

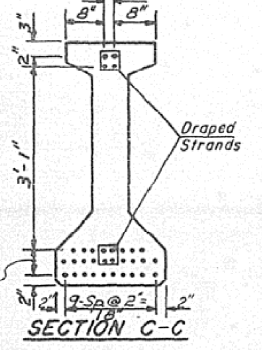
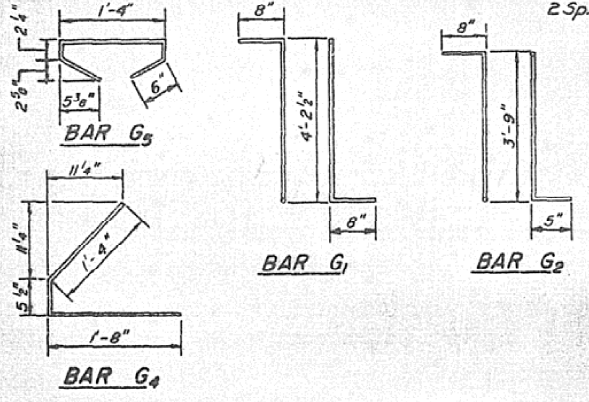


**ELEVATION OF BEAMS—SPAN 2**  
Showing Prestressing Steel



**SECTION A-A**

**SECTION B-B**



**SECTION C-C**

**\*BAR LIST**

Bar	No	Size	Length	Shape
G <sub>1</sub>	162	#5	5'-6 1/2"	7L
G <sub>2</sub>	12	#6	4'-10"	7L
G <sub>3</sub>	8	#7	40'-6"	—
G <sub>4</sub>	48	#3	3'-5 1/2"	L
G <sub>5</sub>	80	#3	2'-8 1/2"	□

*\*For one beam only.*

**BILL OF MATERIAL**

Item	Unit	Total
Furnishing & Erecting Precast Prestressed Concrete I-Beams, 48"	Lin Ft	477

**NOTES**

All inserts and threaded rods for inserts, reinforcing and Prestressing Steel, and other items which are cast into the Precast Concrete I-Beams shall be included in the contract unit price per lineal foot of "Furnishing And Erecting Precast Prestressed Concrete I-Beams, 48 in."

Prestressing Steel shall have a nominal diameter of 1/2". Inserts for 3/8" threaded rods are to be two strut, coil type for interior I-Beams and single coil, flared loc. type for exterior I-Beams. Steel for lifting hooks shall be non-deformed bars  $f_y = 40,000$  psi.

**BEAMS SPAN 2**  
**F.A. RT. 65 SECTION 124 BR.**  
**DEWITT COUNTY**  
**STA. 274 + 16.50**



DESIGNED **P. McHOOD**  
CHECKED **P. MATONE**  
DRAWN **P. CUNNINGHAM**  
CHECKED **P. McHOOD**

SINCE 1918  
**WARREN & VAN PRAAG, INC.**  
CONSULTING ENGINEERS—ARCHITECTS  
DECATUR ILLINOIS ST. LOUIS MISSOURI CHICAGO ILLINOIS DAVENPORT IOWA

PI-4-48 9-15-72