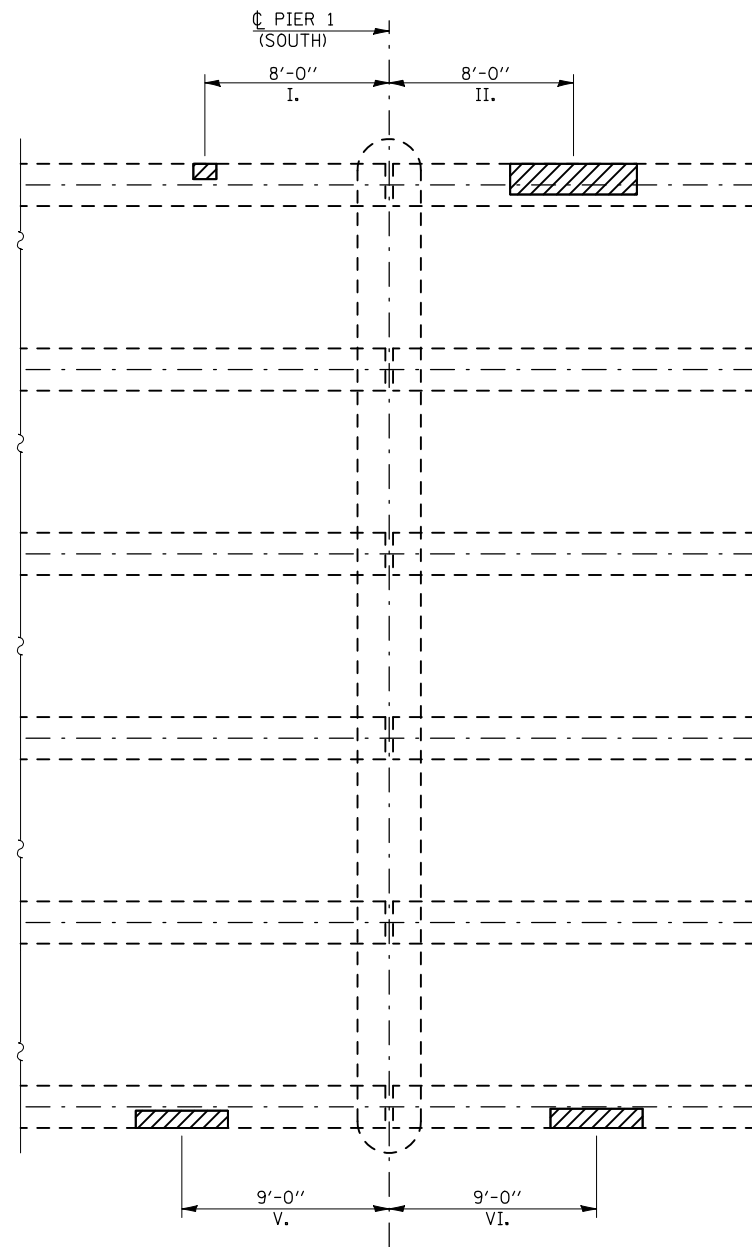
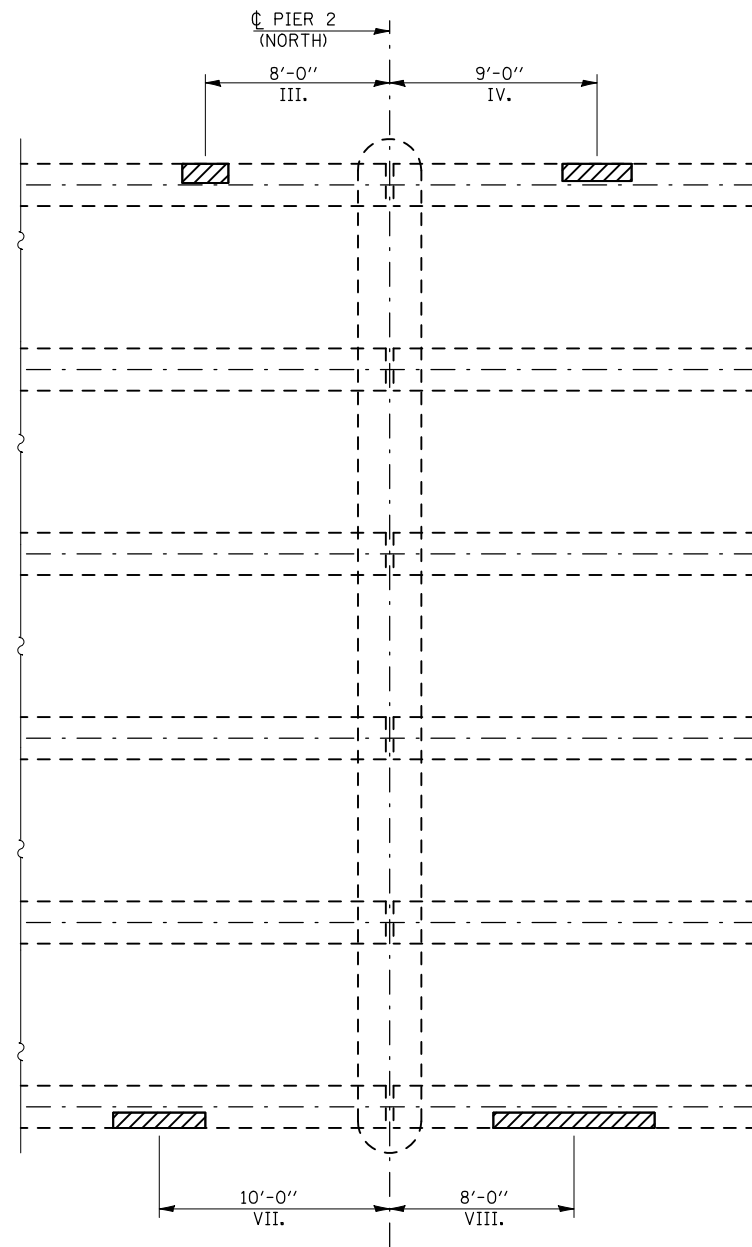


# P.P.C. I-BEAM REPAIRS

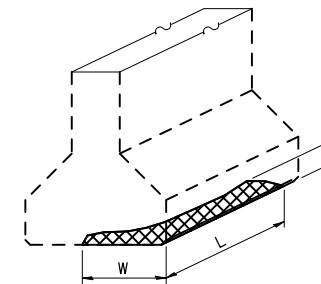
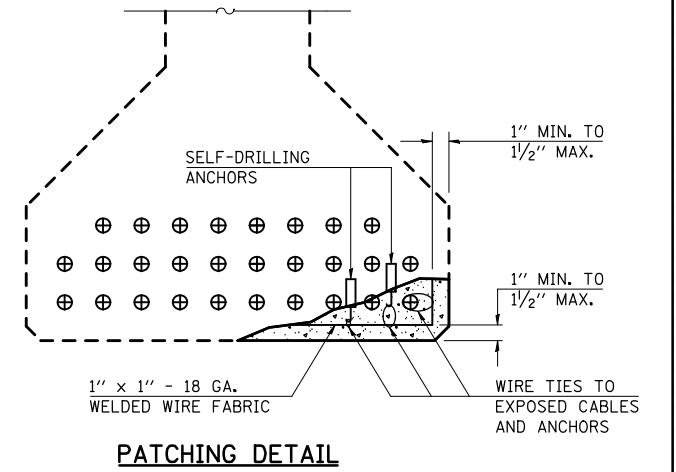
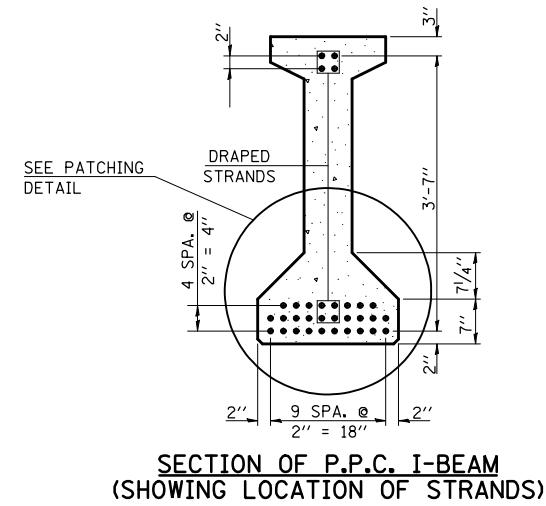
## S.N. 020-0045



**PLAN AT PIER 1**  
(SHOWING LOCATIONS OF P.P.C. I-BEAM REPAIRS)



**PLAN AT PIER 2**  
(SHOWING LOCATIONS OF P.P.C. I-BEAM REPAIRS)



**TABLE FOR P.P.C. I-BEAM REPAIRS**

REPAIR LOCATION	REPAIR AREA DIMENSIONS			ESTIMATED REPAIR VOLUME (CU FT)
	L	W	H	
I.	1'-0"	8"	2"	0.07
II.	5'-6"	1'-4"	5"	2.04
III.	2'-0"	10"	2"	0.19
IV.	3'-0"	9"	3"	0.38
V.	4'-0"	9"	3"	0.50
VI.	4'-0"	10"	4"	0.74
VII.	4'-0"	8"	3"	0.44
VIII.	7'-0"	8"	2"	0.52

**NOTES**

THE REPAIR DIMENSIONS AND ESTIMATED QUANTITIES IN THE ABOVE TABLE ARE FOR ESTIMATING PURPOSES ONLY. THIS INFORMATION IS BASED ON AN INSPECTION FROM APRIL OF 2009. ACTUAL QUANTITIES SHALL BE DETERMINED BY THE ENGINEER IN THE FIELD. THIS WORK WILL BE PAID FOR AT THE CONTRACT UNIT PRICE FOR P.P.C. I-BEAM REPAIRS ON A LUMP SUM BASIS. NO ADDITIONAL COMPENSATION WILL BE ALLOWED.

THE REMOVAL OF THE EXISTING CONCRETE AT THE P.P.C. I-BEAM REPAIR LOCATIONS SHALL BE LIMITED TO ALL LOOSE OR DELAMINATED CONCRETE ONLY. THE CONTRACTOR SHALL USE EXTREME CARE DURING THIS REMOVAL PROCESS TO PREVENT ANY DAMAGE TO THE EXISTING PRE-STRESSING STRANDS. SPECIAL ATTENTION SHALL ALSO BE GIVEN WHEN USING SELF-DRILLING ANCHORS IN THE PATCH AREAS. THE ANCHORS SHOULD NOT MAKE CONTACT WITH ANY OF THE PRE-STRESSING STRANDS.

THE CONTRACTOR SHALL USE CLASS PS CONCRETE FOR THE PATCHING OF THE P.P.C. I-BEAMS.

**BILL OF MATERIALS**

ITEM	UNIT	TOTAL
P.P.C. I-BEAM REPAIRS	L SUM	1.0