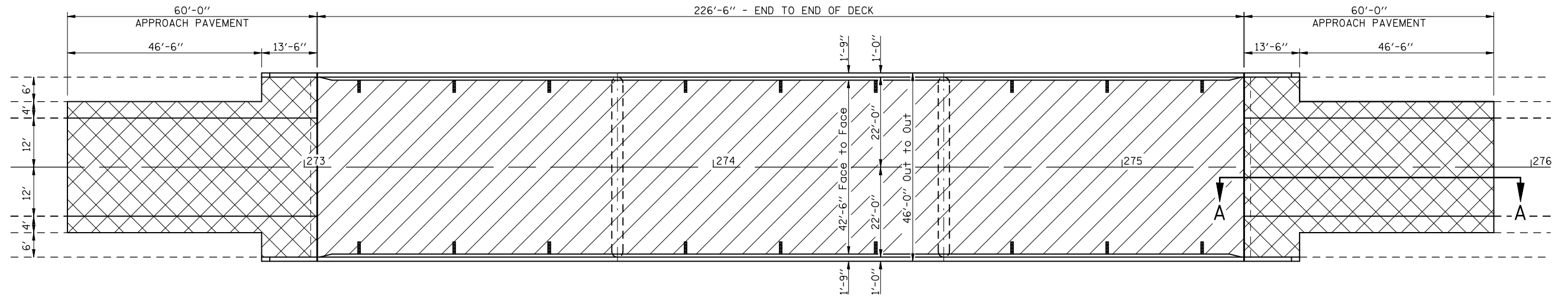
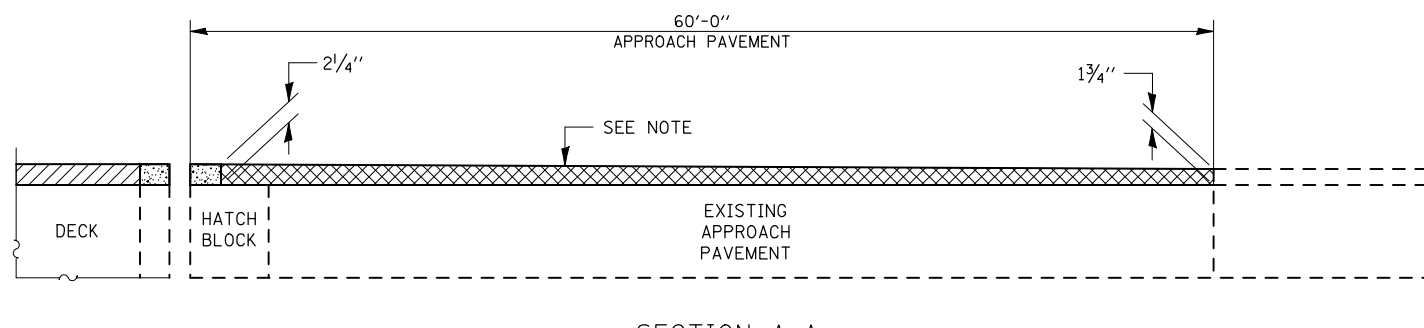


# WEARING SURFACE & APPROACH OVERLAY PLAN

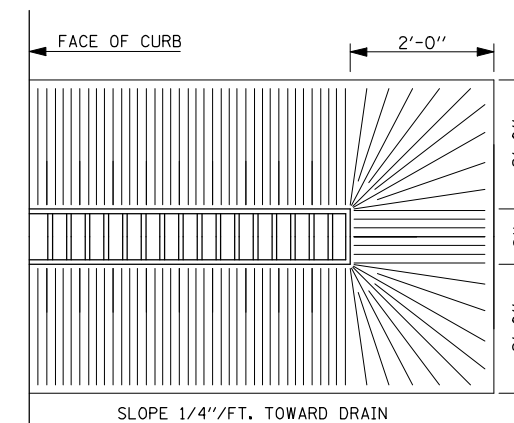
## S.N. 020-0045



PLAN



SECTION A-A  
(SHOWING RESURFACING TRANSITION OVER APPROACH PAVEMENTS)



PLAN VIEW  
AT DRAIN

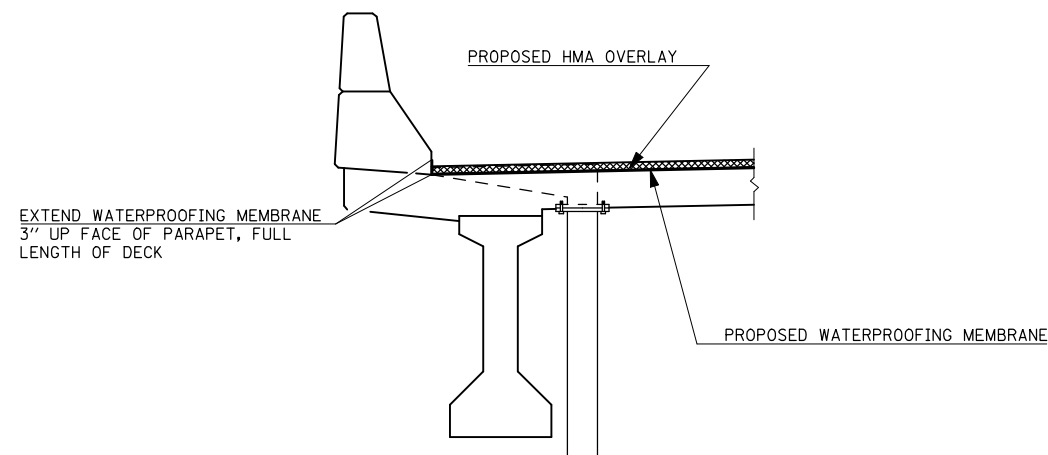
**NOTE:**  
TRANSITION AREA TO BE MILLED SHALL BE INCLUDED IN THE CONTRACT UNIT PRICE FOR H.M.A. SURFACE REMOVAL, 1 3/4" AND NO ADDITIONAL COMPENSATION SHALL BE ALLOWED FOR THE VARIABLE THICKNESS.

**LEGEND**

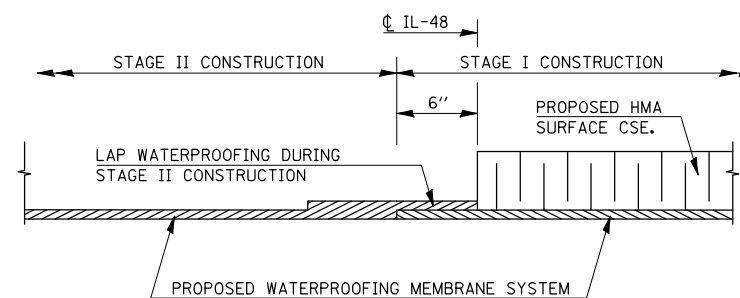
- H.M.A. SURFACE REMOVAL (DECK) & PROPOSED 1/2" H.M.A. WEARING SURFACE AND WATERPROOFING MEMBRANE SYSTEM
- H.M.A. SURFACE REMOVAL, 1 3/4" & PROPOSED H.M.A. SURFACE OVER APPROACHES - SEE NOTE
- EXISTING DRAINAGE SCUPPER, TO BE REUSED.

**BILL OF MATERIALS**

ITEM	UNIT	TOTAL
H.M.A. SURFACE REMOVAL (DECK)	SQ YD	1070.0
H.M.A. SURFACE REMOVAL, 1 3/4"	SQ YD	470.0
WATERPROOFING MEMBRANE SYSTEM	SQ YD	1083.0
H.M.A. SURFACE COURSE, MIX C, N-50	TON	143.0
BITUMINOUS MATERIALS (PRIME COAT)	GAL	47.0



SECTION AT DRAIN



WATERPROOFING TREATMENT  
AT STAGE CONSTRUCTION

FILE NAME =	USER NAME = smsgm	DESIGNED - GMS	REVISED - ---	<b>STATE OF ILLINOIS DEPARTMENT OF TRANSPORTATION</b>	<b>WEARING SURFACE &amp; APPROACH OVERLAY PLAN S.N. 020-0045</b>	F.A.P. RTE. 760	SECTION 124 BR-1	COUNTY DEWITT	TOTAL SHEETS 23	SHEET NO. 5		
ct:\pwork\PWIDOT\SIMSGM\d0179794\05708	31-sht-Bridge Repair Plans.dgn	DRAWN - GMS	REVISED - ---			SCALE: _____	SHEET NO. 2 OF 16 SHEETS	STA. _____	TO STA. _____	CONTRACT NO. 70531		
	PLOT SCALE = 41.6516' / IN.	CHECKED - ---	REVISED - ---			FED. ROAD DIST. NO. - ILLINOIS FED. AID PROJECT						
	PLOT DATE = 2/19/2010	DATE - -----	REVISED - ---									