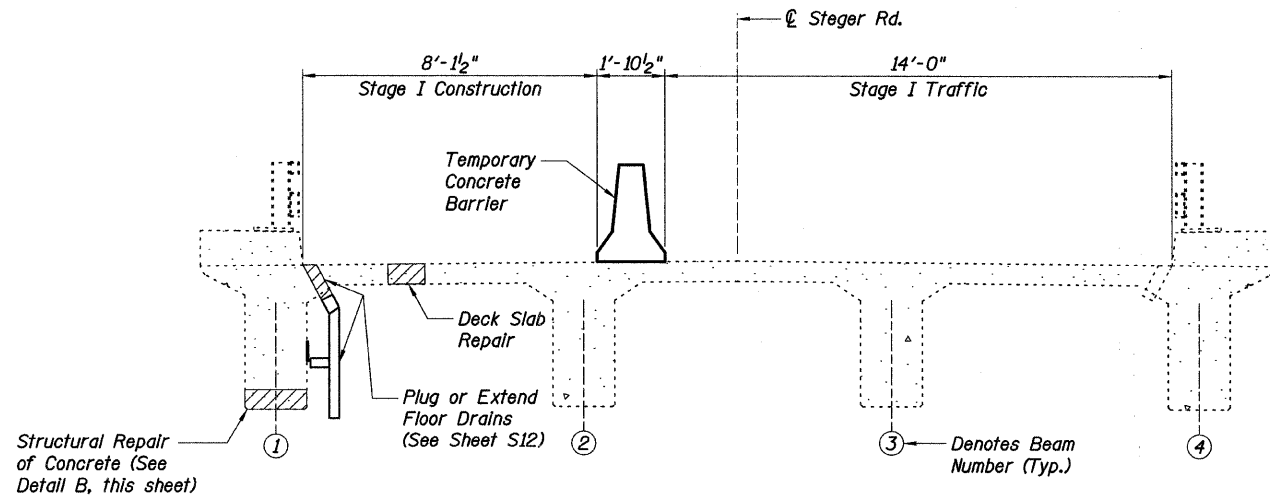
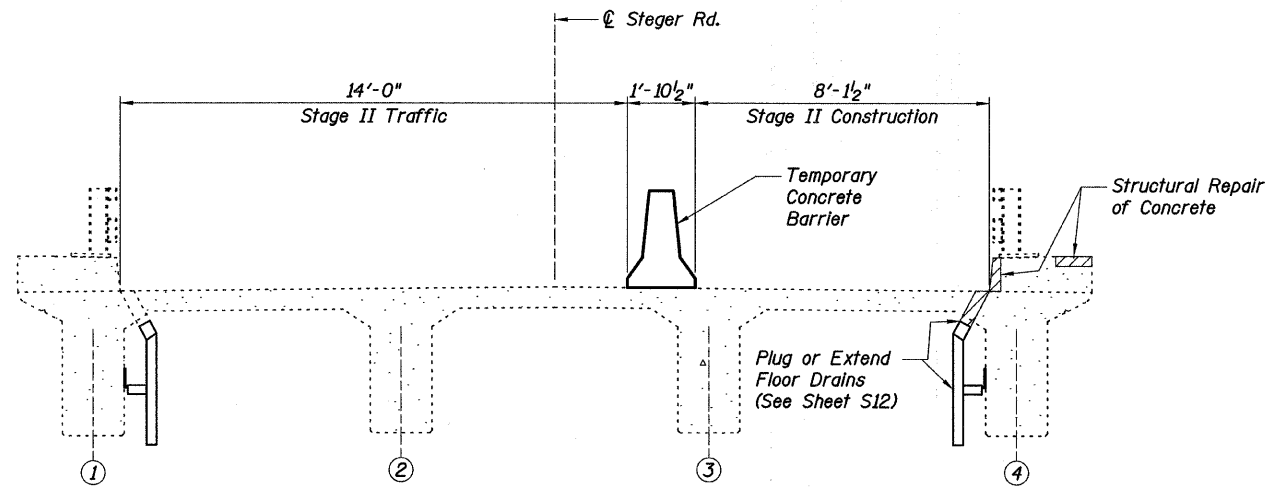


STATE OF ILLINOIS
DEPARTMENT OF TRANSPORTATION



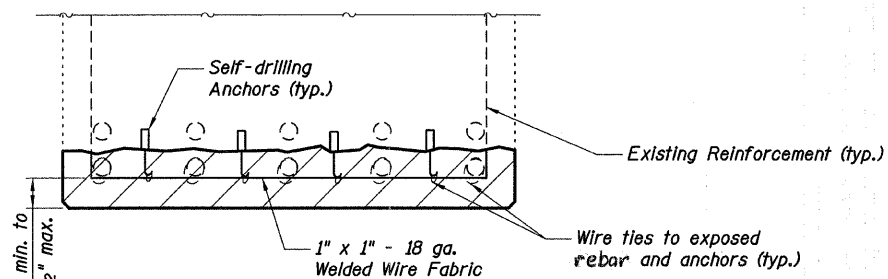
STAGE I TRAFFIC AND CONSTRUCTION

Note: Only perform concrete repair work above top of deck and bridge railing transition work with the Staging shown. (Looking Stations Ahead)

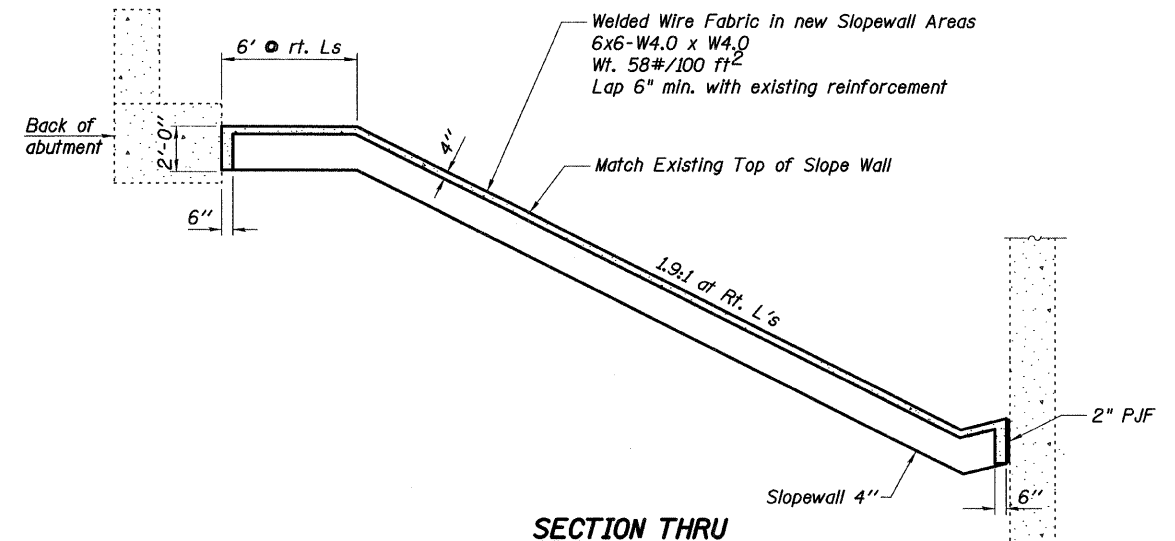


STAGE II TRAFFIC AND CONSTRUCTION

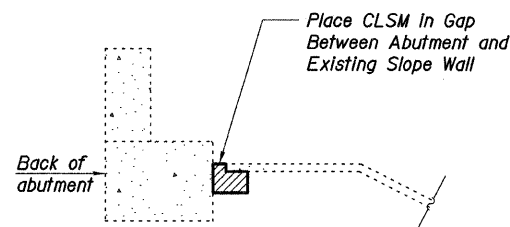
Note: Only perform concrete repair work above top of deck and bridge railing transition work with the Staging shown. (Looking Stations Ahead)



DETAIL B



SECTION THRU CONCRETE SLOPEWALL



DETAIL A

TOTAL BILL OF MATERIAL

ITEM	UNIT	SUPER-STRUCTURE QUANTITY	SUBSTRUCTURE QUANTITY		TOTAL QUANTITY
			PIERS	ABUTMENTS	
Slope Wall Removal	Sq Yd	0	0	134	134
Slope Wall 4 Inch	Sq Yd	0	0	134	134
Controlled Low-Strength Material	Cu Yd	0	0	4	4
Plug Existing Deck Drains	Each	8	0	0	8
Cleaning and Painting Exposed Rebar	Sq Ft	25	0	0	25
Structural Repair of Concrete (Depth Equal to or Less Than 5 Inches)	Sq Ft	7	11	2	20
Floor Drain Extension	Each	16	0	0	16
Deck Slab Repair (Full Depth, Type I)	Sq Yd	1	0	0	1

STAGING DIAGRAM AND BILL OF MATERIAL
STEGER ROAD OVER I-57
F.A.I. RTE. 57 - SEC. (46-1,2)RS-3&I
KANKAKEE COUNTY
STA. 815+16.50
S.N. 046-0083

SHEET NO. S10 S27 SHEETS	F.A.I. RTE.	SECTION	COUNTY	TOTAL SHEETS	SHEET NO.
	57	(46-1,2)RS-3&I	KANKAKEE	115	35
			CONTRACT NO. 66608		
FED. ROAD DIST. NO. 7 ILLINOIS FED. AID PROJECT					

Baker

h:\1872_well\3.0 deliverables\3.3 structure drawings\final\b2_0083stragimg.dgn 4/7/2010

DESIGNED:	GWG
CHECKED:	KPZ
DRAWN:	MAN
CHECKED:	KPZ