

DESIGN SPECIFICATIONS
2002 AASHTO Standard Specifications
for Highway Bridges, 17th Edition

DESIGN STRESSES
FIELD UNITS
f'c = 3,500 psi
fy = 60,000 psi (Reinforcement)

EXISTING CONSTRUCTION
f'c = 3,500 psi
fs = 20,000 psi (Reinforcement)

STATE OF ILLINOIS
DEPARTMENT OF TRANSPORTATION

HIGHWAY CLASSIFICATION

F.A.I. Rte. I-57 - Interstate 57
Functional Class: Interstate
ADT: 32,300 (2007); 61,000 (2027)
(Two-Way)
Posted Speed: 65 m.p.h.

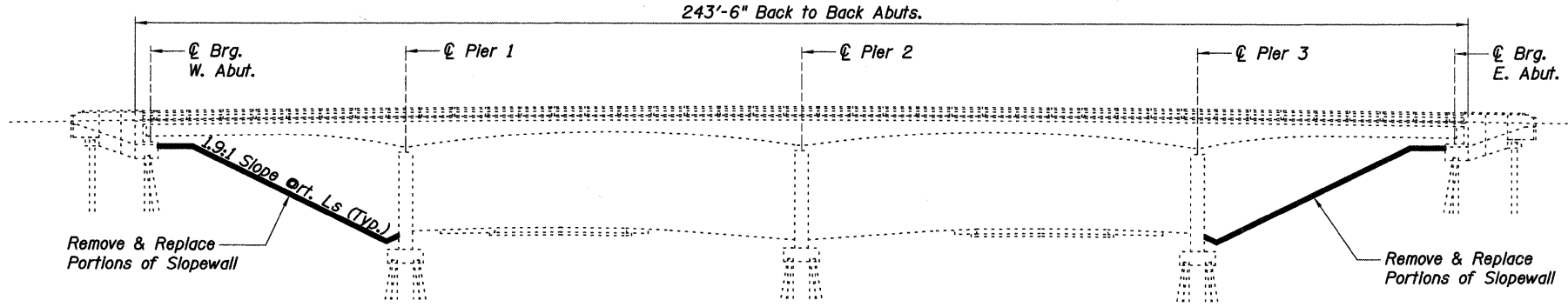
Steger Road
Functional Class: Local Road, (Non-Urban)
ADT: 550 (2007); 500 (2027)

PROPOSED WORK:

- Traffic shall be maintained using stage construction.
1. Repair bottom of Beam 1 in Span 4.
 2. Repair spall at the bottom of the deck in Span 4.
 3. Clean and paint exposed reinforcing bars at the underside of the superstructure as indicated on the superstructure repair plan (see sheet S12).
 4. Repair spalls and delamination on the bridge curbs.
 5. Repair spalls and delaminations on the West Abutment, and Piers 1 and 3.
 6. Replace damaged bridge rail transitions at the NE and SE corners of the bridge (see Roadway Plans for details).
 7. Plug deck drains within 10' of substructures and extend remaining deck drains.
 8. Remove and Replace portions of slopewall panels as indicated. Fill gaps between existing slopewall panel and abutments with Controlled Low-Strength Material (CLSM) as indicated (See Detail A, Sheet S10).

GENERAL NOTES:

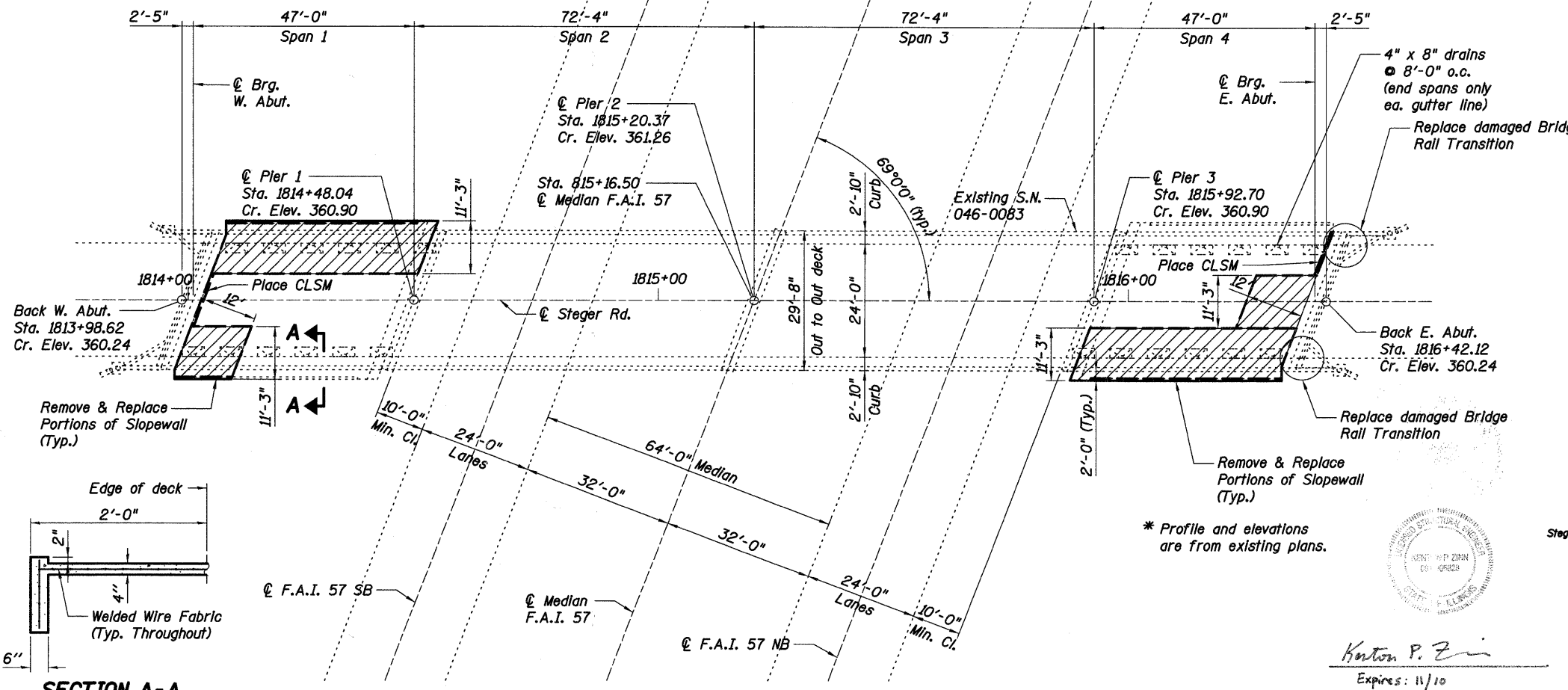
1. Plan dimensions and details relative to existing plans are subject to nominal construction variations. The Contractor shall field verify existing dimensions and details affecting new construction and make necessary approved adjustments prior to construction or ordering of materials. Such variations shall not be cause for additional compensation for a change in scope of the work, however, the Contractor will be paid for the quantity actually furnished at the unit price bid for the work.



ELEVATION

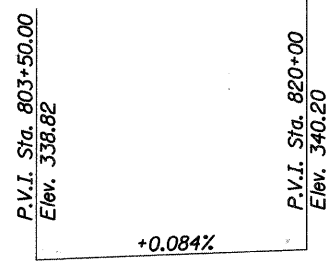
INDEX OF STRUCTURAL SHEETS

SHEET	TITLE
S9	GENERAL PLAN AND ELEVATION
S10	STAGING DIAGRAM AND BILL OF MATERIAL
S11	TEMPORARY CONCRETE BARRIER FOR STAGE CONSTRUCTION
S12	SUPERSTRUCTURE REPAIR PLAN I
S13	SUPERSTRUCTURE REPAIR PLAN II
S14	DRAIN MODIFICATION DETAILS
S15	SUBSTRUCTURE REPAIR PLAN

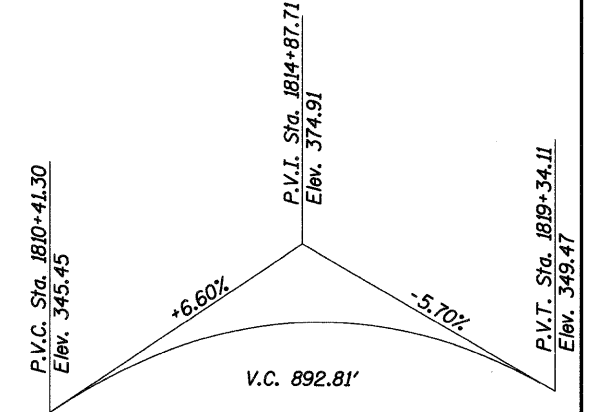


SECTION A-A

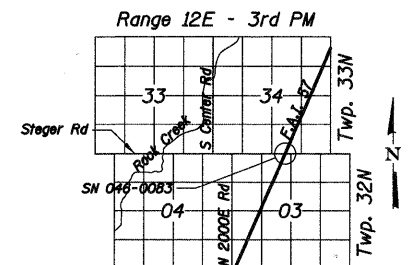
PLAN



PROFILE F.A.I. 57 *
(Same for both lanes.)



PROFILE STEGER RD. *



LOCATION SKETCH

GENERAL PLAN AND ELEVATION
STEGER ROAD OVER I-57
F.A.I. RTE. 57 - SEC. (46-1,2)RS-3&I
KANKAKEE COUNTY
STA. 815+16.50
S.N. 046-0083

SHEET NO. S9	F.A.I. RTE.	SECTION	COUNTY	TOTAL SHEETS	SHEET NO.
	57	(46-1,2)RS-3&I	KANKAKEE	115	34
S27 SHEETS		CONTRACT NO. 66608			
FED. ROAD DIST. NO. 7 ILLINOIS FED. AID PROJECT					

Kenton P. Z...

Baker

H:\18772.W01\3.0 deliverables\3.3 structure\Drawings\Final\10083genplan.dgn 4/7/2010

DESIGNED:	GWG
CHECKED:	KPZ
DRAWN:	MAM
CHECKED:	KPZ