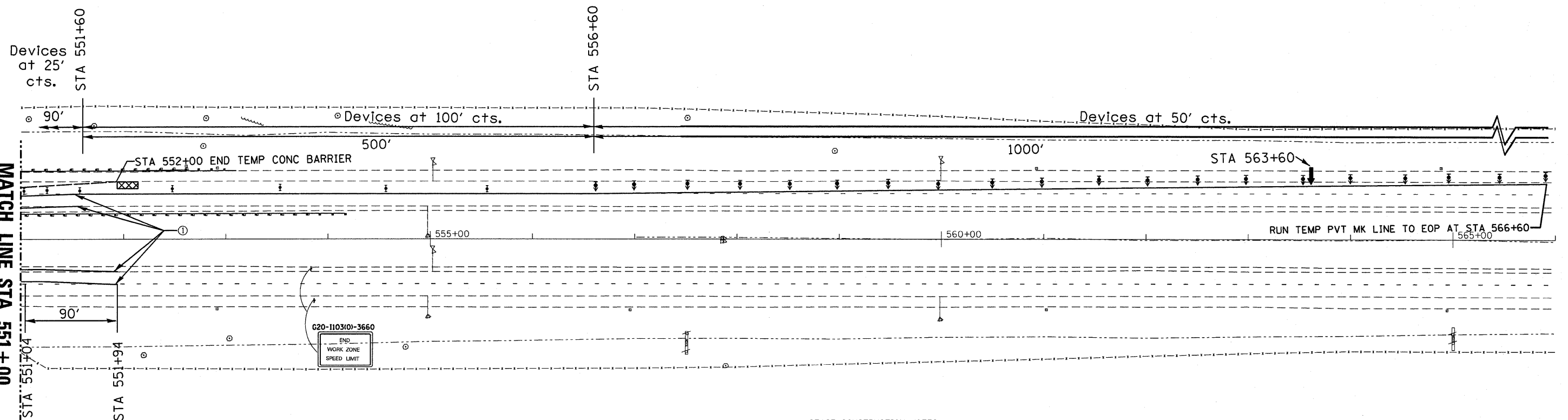
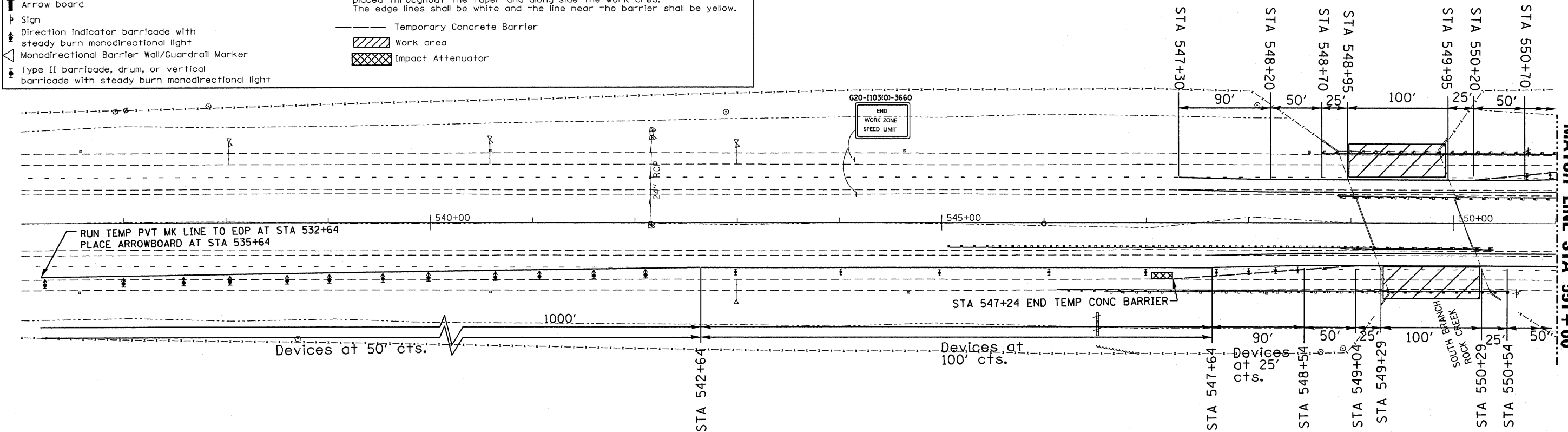


SYMBOLS

- ↑ Arrow board
- ⊥ Sign
- Direction indicator barricade with steady burn monodirectional light
- ◁ Monodirectional Barrier Wall/Guardrail Marker
- ⊕ Type II barricade, drum, or vertical barricade with steady burn monodirectional light

① Wet temporary pavement marking tape - TY III shall be placed throughout the taper and along-side the work area. The edge lines shall be white and the line near the barrier shall be yellow.

- Temporary Concrete Barrier
- ▨ Work area
- ▩ Impact Attenuator



SEE STANDARD 701402 FOR DETAILS NOT SHOWN

STAGE CONSTRUCTION NOTES:

STAGE II CONSTRUCTION:

1. REMOVE OUTSIDE PORTION OF HMA SURF CSE ON BRIDGES
2. PLACE THE CONCRETE LATEX OVERLAY ON BRIDGES

**STATE OF ILLINOIS
DEPARTMENT OF TRANSPORTATION**

**STAGE II CONSTRUCTION FOR
SN 046-0018 AND SN 046-0019**

FILE NAME =	USER NAME = braboyca	DESIGNED -	REVISED -
c:\pwwork\pwwork\braboyca\dms30564\EP0404-sht-plnprF50.DGN		DRAWN -	REVISED -
PLOT SCALE = 50.0000' / IN.		CHECKED -	REVISED -
PLOT DATE = Mar 25, 2010 - 12:12:34 PM		DATE -	REVISED -

SCALE:	SHEET NO. OF SHEETS	STA. TO STA.	F.A.I. RTE. 57	SECTION 46-1,2RS-3 & I	COUNTY KANKAKEE	TOTAL SHEETS 115	SHEET NO. 25
							CONTRACT NO. 66608
ILLINOIS FED. AID PROJECT							