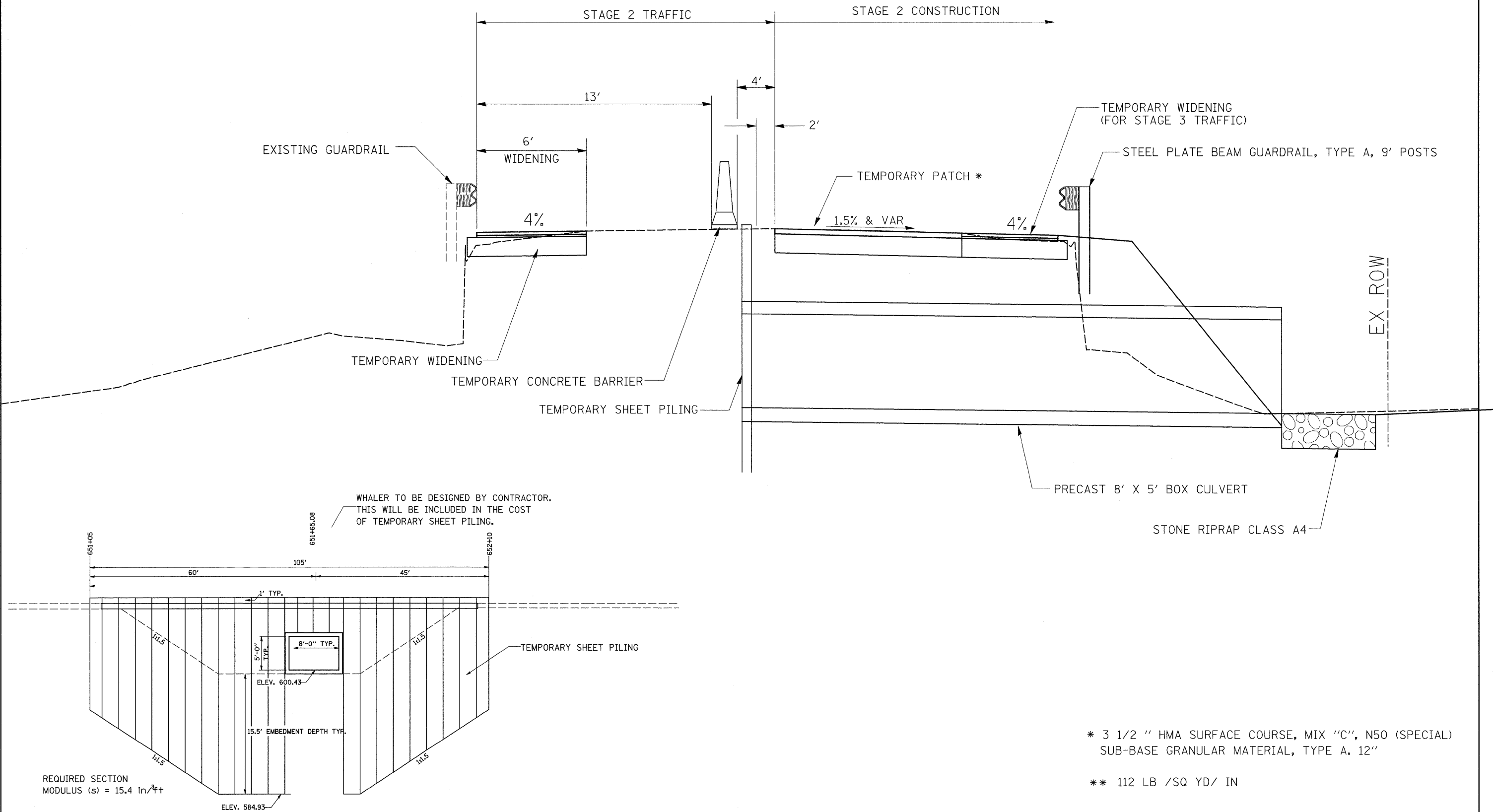


STAGING TYPICAL SECTION



* 3 1/2 " HMA SURFACE COURSE, MIX "C", N50 (SPECIAL)
 SUB-BASE GRANULAR MATERIAL, TYPE A, 12"
 ** 112 LB /SQ YD/ IN

FILE NAME =	USER NAME = grantpm	DESIGNED -	REVISED -	STATE OF ILLINOIS DEPARTMENT OF TRANSPORTATION	STAGING TYPICAL SECTIONS				F.A.P. RTE.	SECTION	COUNTY	TOTAL SHEETS	SHEET NO.		
os\pwork\pwork\grantpm\dms36948\0204	106-shr-typ.dgn	DRAWN -	REVISED -		SCALE:	SHEET NO.	OF	SHEETS	STA.	TO STA.	585	128T-1	HENRY	35	10
	PLOT SCALE = 50.0000' / IN.	CHECKED -	REVISED -		CONTRACT NO. 64G18										
	PLOT DATE = Thu Mar 18 11:35:37 2010	DATE -	REVISED -		ILLINOIS FED. AID PROJECT										