

STATE OF ILLINOIS  
DEPARTMENT OF TRANSPORTATION  
DIVISION OF HIGHWAYS

**PROPOSED  
HIGHWAY PLANS**

FAP ROUTE 585 (IL 92)  
SECTION 128T-1  
PROJECT F-0585(007)  
HENRY COUNTY

F.A.P. RTE.	SECTION	COUNTY	TOTAL SHEETS	SHEET NO.
585	128T-1	HENRY	35	1
		ILLINOIS	CONTRACT NO. 64G18	

FOR INDEX OF SHEETS, SEE SHEET NO.

D-92-067-10



STRUCTURE REMOVAL AND REPLACEMENT STA 651+65.08  
(EXISTING SN 037-1096)  
(PROPOSED SN 037-1184)

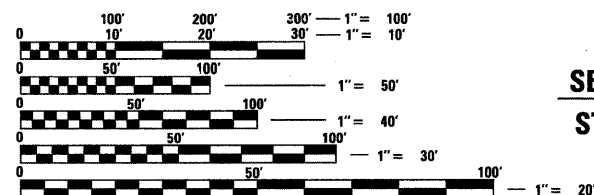
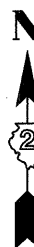
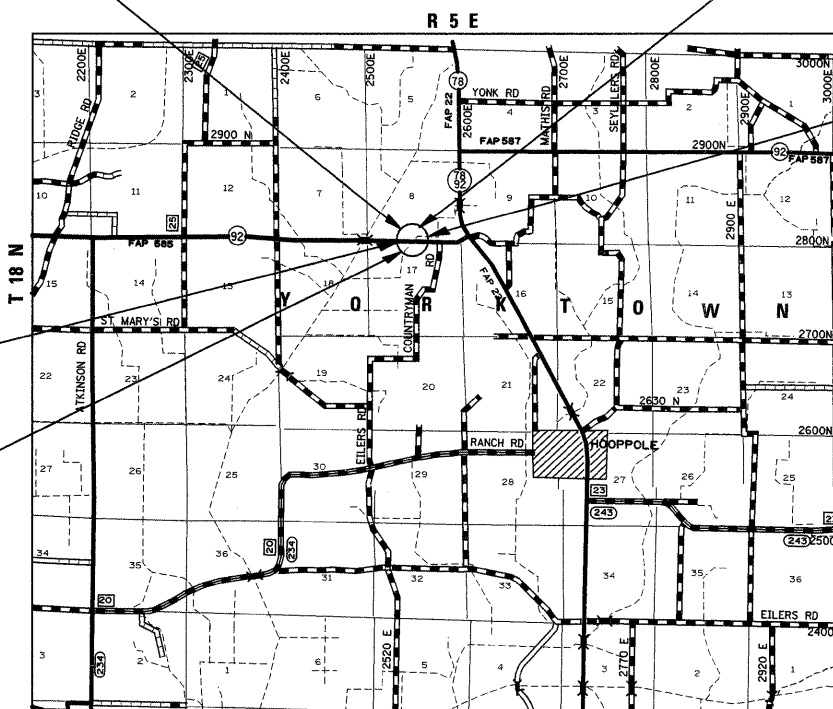
C-92-144-10

IMPROVEMENT ENDS  
STA 655+75

SECTION ENDS  
STA 654+50

IMPROVEMENT BEGINS  
STA 647+00

SECTION BEGINS  
STA 649+00



FULL SIZE PLANS HAVE BEEN PREPARED USING STANDARD ENGINEERING SCALES. REDUCED SIZED PLANS WILL NOT CONFORM TO STANDARD SCALES. IN MAKING MEASUREMENTS ON REDUCED PLANS, THE ABOVE SCALES MAY BE USED.

J.U.L.I.E.  
JOINT UTILITY LOCATION INFORMATION FOR EXCAVATION  
1-800-892-0123  
OR 811

YORKTOWN TOWNSHIP, SECTION 8, 17

PROJECT ENGINEER: BECKY MARRUFFO  
PROJECT MANAGER: DERRICK LOPEZ (815)-284-5930  
CONTRACT NO. 64G18

GROSS LENGTH = 875 FT. = .17 MILE  
NET LENGTH = 550 FT. = .10 MILE

STATE OF ILLINOIS  
DEPARTMENT OF TRANSPORTATION  
DIVISION OF HIGHWAYS

SUBMITTED MARCH 18 20 10  
James F. Ryan  
DEPUTY DIRECTOR OF HIGHWAYS, REGION ENGINEER

May 7 20 10  
Scott E. Stitt, P.E. /e  
acting ENGINEER OF DESIGN AND ENVIRONMENT

May 7 20 10  
Christine M. Reed /e  
DIRECTOR OF HIGHWAYS, CHIEF ENGINEER

**PRINTED BY THE AUTHORITY  
OF THE STATE OF ILLINOIS**