

Chain BHAWK contains:  
1006 CUR 200 CUR 1200 1212

Beginning chain BHAWK description

Point 1006 N 1,747,954.4510 E 2,184,328.8440 Sta 21+52.57

Course from 1006 to PC 200 S 70° 46' 10.1978" E Dist 73.7321'

Curve Data

Curve 200  
P.I. Station 25+31.98 N 1,747,829.4824 E 2,184,687.0907  
Delta = 18° 05' 03.6741" (LT)  
Degree = 2° 58' 58.0895"  
Tangent = 305.6857'  
Length = 606.2873'  
Radius = 1,920.8706'  
External = 24.1712'  
Long Chord = 603.7738'  
Mid. Ord. = 23.8708'  
P.C. Station 22+26.30 N 1,747,930.1659 E 2,184,398.4619  
P.T. Station 28+32.59 N 1,747,823.3679 E 2,184,992.7152  
C.C. N 1,749,743.8542 E 2,185,031.1378

Course from PT 200 to PC 1200 S 88° 51' 13.8718" E Dist 1,793.1978'

Curve Data

Curve 1200  
P.I. Station 48+37.69 N 1,747,783.2605 E 2,186,997.4132  
Delta = 8° 27' 40.3970" (RT)  
Degree = 2° 00' 00.4895"  
Tangent = 211.9014'  
Length = 423.0323'  
Radius = 2,864.5942'  
External = 7.8268'  
Long Chord = 422.6480'  
Mid. Ord. = 7.8054'  
P.C. Station 46+25.78 N 1,747,787.4991 E 2,186,785.5542  
P.T. Station 50+48.82 N 1,747,747.8951 E 2,187,206.3426  
C.C. N 1,744,923.4780 E 2,186,728.2546

Course from PT 1200 to 1212 S 80° 23' 33.4796" E Dist 377.6465'

Point 1212 N 1,747,684.8676 E 2,187,578.6924 Sta 54+26.46

Ending chain BHAWK description

REFERENCE TIES

POINT	CHAIN	STATION	OFFSET	DESCRIPTION
500	BHAWK	31+57.47	26.8267' RT	POWER POLE WITH TRANSFORMER, SHINER
501	BHAWK	30+34.38	26.1757' RT	POWER POLE, SHINER
502	BHAWK	30+85.52	25.1985' RT	LANDSCAPE EDGE, CORNER
503	BHAWK	23+45.29	34.722' RT	PIER, CORNER
504	BHAWK	24+02.20	71.3587' RT	POWER POLE, SHINER
505	BHAWK	23+83.94	14.845' RT	CATCH BASIN, CORNER
506	BHAWK	37+86.69	14.8817' LT	CATCH BASIN, CORNER
507	BHAWK	37+87.44	15.1032' RT	CATCH BASIN, CORNER
508	BHAWK	35+73.84	18.9996' RT	RETAINING WALL, END
509	BHAWK	41+88.28	14.7835' LT	CATCH BASIN, CORNER
510	BHAWK	41+88.26	15.0859' RT	CATCH BASIN, CORNER
511	BHAWK	42+74.66	44.7956' RT	TREE DECIDUOUS
512	BHAWK	51+44.88	59.5371' LT	TOP OF WINGWALL, END
513	BHAWK	51+44.34	58.9207' LT	TOP OF WINGWALL, END

CURVE POINT NUMBERS

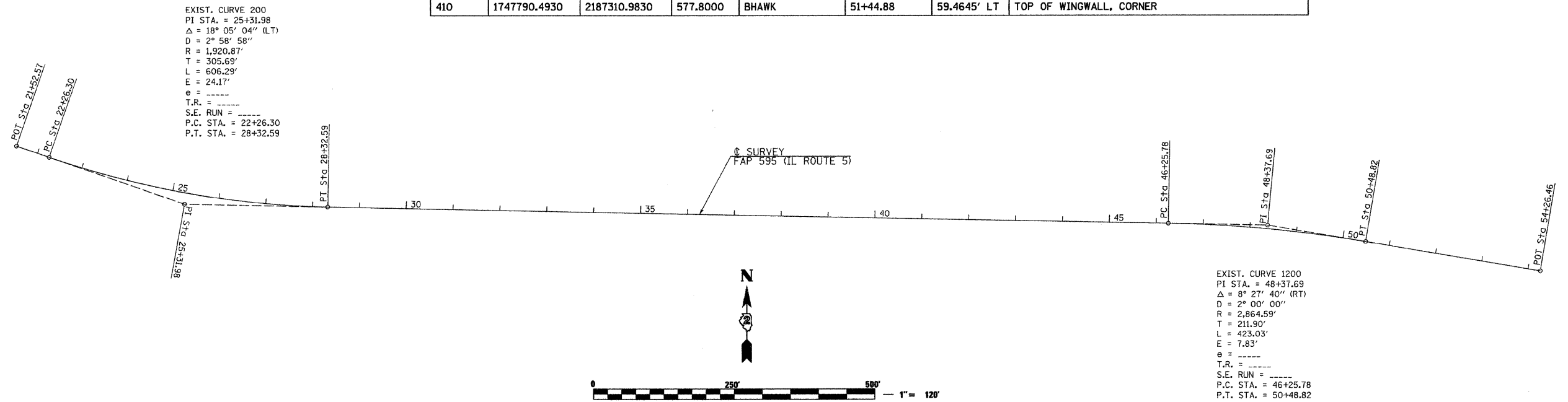
CHAIN	CURVE	PI	CC	PC	PT
BHAWK	200	200	201	202	203
BHAWK	1200	1200	1201	1202	1203

HORIZONTAL CONTROL POINTS

POINT	NORTH	EAST	ELEVATION	CHAIN	STATION	OFFSET	DESCRIPTION
1	1747662.0290	2184683.2520	669.1620	BHAWK	25+52.96	189.8214' RT	TOPO SURVEY POINT, PK NAIL
2	1747681.1380	2184799.8620	667.9980	BHAWK	26+56.54	154.7706' RT	TOPO SURVEY POINT, PK NAIL
3	1747859.6790	2184562.1320	668.6310	BHAWK	24+02.39	20.7994' RT	TOPO SURVEY POINT, PIN
4	1747959.5570	2184254.3040	674.7920	BHAWK	OUT OF CHAIN	-----	TOPO SURVEY POINT, PIN
5	1747800.5630	2185237.3050	645.5170	BHAWK	30+77.58	17.9079' RT	TOPO SURVEY POINT, PIN
7	1747823.4940	2185856.4720	642.8610	BHAWK	36+96.17	17.4035' LT	TOPO SURVEY POINT, PIN
8	1747852.8030	2184693.9890	663.4120	BHAWK	25+32.11	0.0000'	POC, PK NAIL
9	1747776.1350	2186446.4860	623.5450	BHAWK	42+87.01	18.1441' RT	TOPO SURVEY POINT, PIN
10	1747774.5830	2187313.4070	578.3900	BHAWK	51+49.92	44.1822' LT	TOPO SURVEY POINT, PIN
65723070	1741238.0890	2189599.7040	579.5230	BHAWK	OUT OF CHAIN	-----	DISTRICT NETWORK MONUMENT, PERM. SURVEY MARKER

BENCH MARKS

POINT	NORTH	EAST	ELEVATION	CHAIN	STATION	OFFSET	DESCRIPTION
405	1747793.6010	2185192.5290	647.5470	BHAWK	30+32.96	25.7641' RT	POWER POLE, PK NAIL
410	1747790.4930	2187310.9830	577.8000	BHAWK	51+44.88	59.4645' LT	TOP OF WINGWALL, CORNER



FILE NAME =	USER NAME = jdeen	DESIGNED - AWM	REVISED -	<b>STATE OF ILLINOIS DEPARTMENT OF TRANSPORTATION</b>	<b>FAP 595 (IL 5) HORIZONTAL AND VERTICAL CONTROL</b>			F.A.P. RTE. = 595	SECTION = (182)M-2	COUNTY = ROCK ISLAND	TOTAL SHEETS = 41	SHEET NO. = 8
\\transportation\2244\2244-20\202909HW		DRAWN - TJD	REVISED -		SCALE: 1"=120'	SHEET NO. 1 OF 1 SHEETS	STA. TO STA.	CONTRACT NO. 64E75				
		CHECKED - AWM	REVISED -		ILLINOIS FED. AID PROJECT							
		DATE - 3/1/2010	REVISED -									