

F.A.P. RTE.	SECTION	COUNTY	TOTAL SHEETS	SHEET NO.
# 595	(18Z)M-2	ROCK ISLAND	41	1
FED. ROAD DIST. NO.		ILLINOIS	CONTRACT NO. 64E75	

* IL RTE 5
D-92-029-09

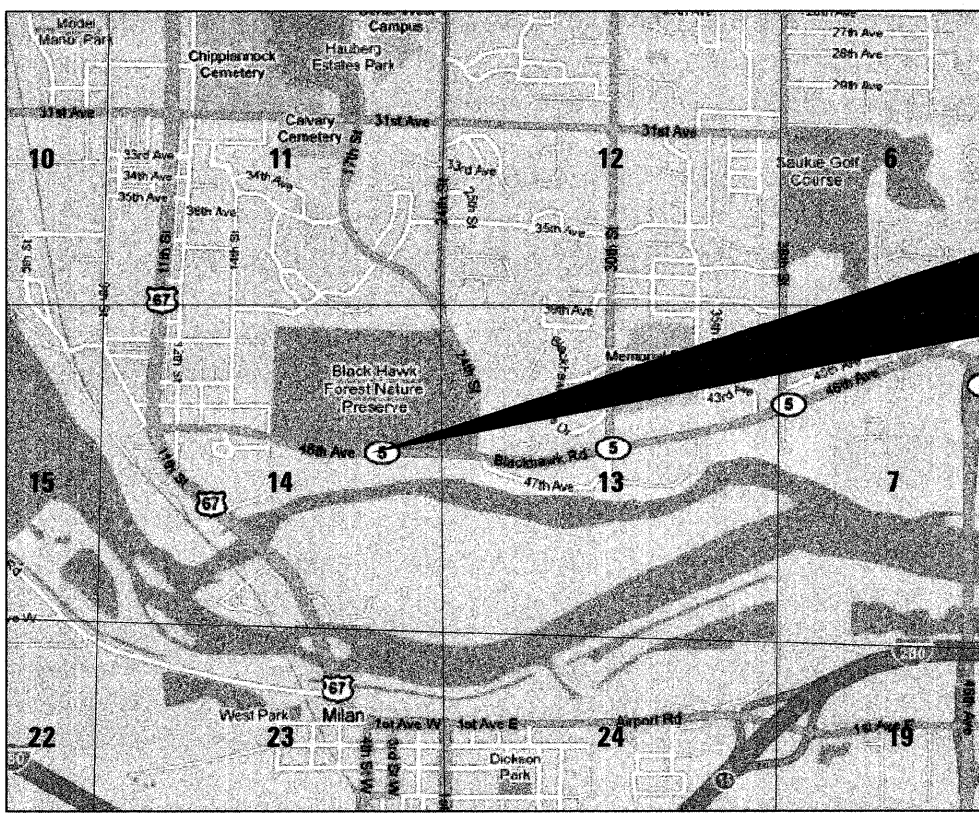


STATE OF ILLINOIS
DEPARTMENT OF TRANSPORTATION
DIVISION OF HIGHWAYS
PROPOSED
HIGHWAY PLANS

FAP ROUTE 595 (IL 5)
SECTION (18Z)M-2
ROCK ISLAND COUNTY

C-92-092-10

R.2W. R.1W.



PROJECT LOCATION
STA 29+60.50 TO STA 39+87.29 &
STA 41+86.55 TO STA 46+20.84
 INCLUDES RECONSTRUCTION OF
 EXISTING SLOPES AT THE END
 OF OUTLET ENDS OF DRAINAGE
 PIPES.

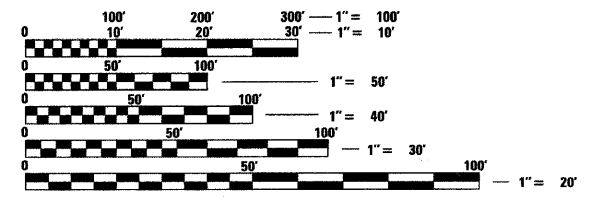


INDEX OF SHEETS

1	COVER SHEET
2	GENERAL NOTES & COMMITMENTS
3	SUMMARY OF QUANTITIES
4 - 5	TYPICAL SECTIONS
6 - 7	SCHEDULES OF QUANTITIES
8	EXISTING HORIZONTAL AND VERTICAL CONTROL
9 - 10	PLAN SHEETS
11 - 12	EROSION CONTROL AND SEEDING PLANS
13	BORING LOGS
14	FURROWED ROADWAY SLOPES (DIST STD 1.1)
15	DETAILS FOR CURB & GUTTER REPLACEMENT (DIST STD 17.4)
	EROSION CONTROL DETAILS FOR SILT FENCE (DIST STD 29.2)
	TYPICAL BENCHING DETAIL ON EXISTING EMBANKMENT (DIST STD 50.4)
16	WITNESS MARKER & PERMANENT SURVEY MARKERS, TYPE II (DIST STD 66.2)
	INLET SPECIAL NO. 5 (DIST STD 79.4B)
	NOSE TYPE FOR INLET TOP SLAB (DIST STD 79.4D)
17	INLET SPECIAL NO. 3, 4, 5, 6 REINFORCEMENT DETAIL (DIST STD 79.4E)
	TREE REPLACEMENT SCHEDULE (DIST STD 90.4)
18	DETAILS OF PLANTING AND BRACING TREES (DIST STD 92.1)
19 - 41	CROSS SECTIONS

STATE STANDARDS

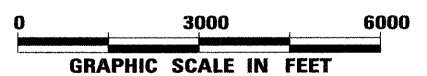
000001-05	STANDARD SYMBOLS, ABBREVIATIONS AND PATTERNS
001001-02	AREAS OF REINFORCEMENT BARS
001006	DECIMAL OF AN INCH AND OF A FOOT
280001-05	TEMPORARY EROSION CONTROL SYSTEMS
420001-07	PAVEMENT JOINTS
542101-02	REINFORCED CONCRETE END SECTIONS FOR 15" (375 mm) TO 36" (900 mm) DIA AT RIGHT ANGLES WITH ROADWAY
542301-02	PRECAST REINFORCED CONCRETE FLARED END SECTION
602401-02	MANHOLE, TYPE A
602601-02	PRECAST REINFORCED CONCRETE FLAT SLAB TOP
602701-02	MANHOLE STEPS
604001-03	FRAME AND LIDS, TYPE 1
606001-04	CONCRETE CURB TYPE B AND COMBINATION CONCRETE CURB AND GUTTER
701001-02	OFF-ROAD OPERATIONS, 2L, 2W, MORE THAN 4.5 M (15') AWAY
701006-03	OFF-ROAD OPERATIONS, 2L, 2W, 4.5 M (15') TO 600 MM (24") FROM PAVEMENT EDGE
701301-03	LANE CLOSURE, 2L, 2W, SHORT TIME OPERATIONS
701501-05	URBAN LANE CLOSURE, 2L, 2W, UNDIVIDED
701901-01	TRAFFIC CONTROL DEVICES
720011-01	METAL POSTS FOR SIGNS, MARKERS & DELINEATORS
728001-01	TELESCOPING STEEL SIGN SUPPORT
729001-01	APPLICATIONS OF TYPES A AND B METAL POSTS (FOR SIGNS & MARKERS)



FULL SIZE PLANS HAVE BEEN PREPARED USING STANDARD ENGINEERING SCALES. REDUCED SIZED PLANS WILL NOT CONFORM TO STANDARD SCALES. IN MAKING MEASUREMENTS ON REDUCED PLANS, THE ABOVE SCALES MAY BE USED.

J.U.L.I.E.
 JOINT UTILITY LOCATION INFORMATION FOR EXCAVATION
 1-800-892-0123
 OR 811

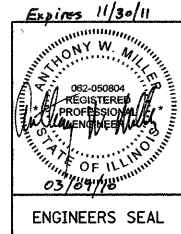
DESIGN DESIGNATION
 FAP 595
 OTHER PRINCIPAL ARTERIAL
 ADT = 13,590 (2010)
 ADT = 20,195 (2030)
 % PV = 97
 % SU = 2
 % MU = 1



SOUTH ROCK ISLAND TOWNSHIP, SECTIONS 13 & 14.

HUTCHISON ENGINEERING - PROJECT ENGINEER
 ANTHONY W. MILLER, P.E.

Hutchison Engineering, Inc.
 SINCE 1945
 1801 West Lafayette
 PO Box 820
 Jacksonville, Illinois 62851
 PHONE : (217)245-7164 FAX : (217)245-0468



STATE OF ILLINOIS
 DEPARTMENT OF TRANSPORTATION
 DIVISION OF HIGHWAYS

SUBMITTED MARCH 11 2010
George F. Ryan
 DEPUTY DIRECTOR OF HIGHWAYS, REGION ENGINEER

May 7 2010
Scott E. Stitt, P.E.
 acting ENGINEER OF DESIGN AND ENVIRONMENT

May 7 2010
Christine M. Reed
 DIRECTOR OF HIGHWAYS, CHIEF ENGINEER

**PRINTED BY THE AUTHORITY
 OF THE STATE OF ILLINOIS**

SQUAD LEADER: CHAD SPREEMAN (815)-284-5934

PROJECT ENGINEER: REBECCA MARRUFFO

CONTRACT NO. 64E75