

STATE OF ILLINOIS
DEPARTMENT OF TRANSPORTATION
DIVISION OF HIGHWAYS

PLANS FOR PROPOSED FEDERAL AID HIGHWAY

INDEX OF SHEETS

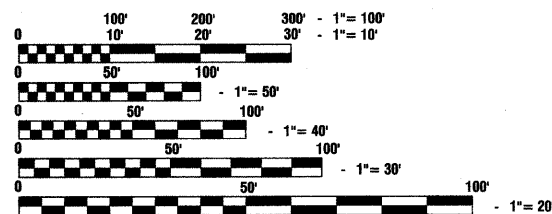
1. COVER SHEET
2. SUMMARY OF QUANTITIES AND GENERAL NOTES
- 3.-6. STREET LIGHTING PLANS
7. SINGLE LINE DIAGRAM
- 8.-12. DETAIL DRAWINGS

STATE STANDARDS

- 000001-05 STANDARD SYMBOLS, ABBREVIATIONS AND PATTERNS
- 701501-05 URBAN LANE CLOSURE, 2L, 2W, UNDIVIDED
- 701606-06 URBAN LANE CLOSURE, MULTILANE, 2W, WITH MOUNTABLE MEDIAN
- 701701-06 URBAN LANE CLOSURE, MULTILANE INTERSECTION
- 701801-04 LANE CLOSURE, MULTILANE 1W OR 2W CROSSWALK OR SIDEWALK CLOSURE
- 701901-01 TRAFFIC CONTROL DEVICES

191ST STREET COLLECTOR
ADT=8,650 (2009)
=21,000 (2030)
DESIGN SPEED=45 MPH
SPEED LIMIT= 50 MPH

SCALES
PLAN - 1"=50'
PROFILE HORIZ. - 1"=50'
PROFILE VERT. - 1"=5'
CROSS SECTIONS - 1"=10'

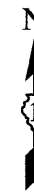
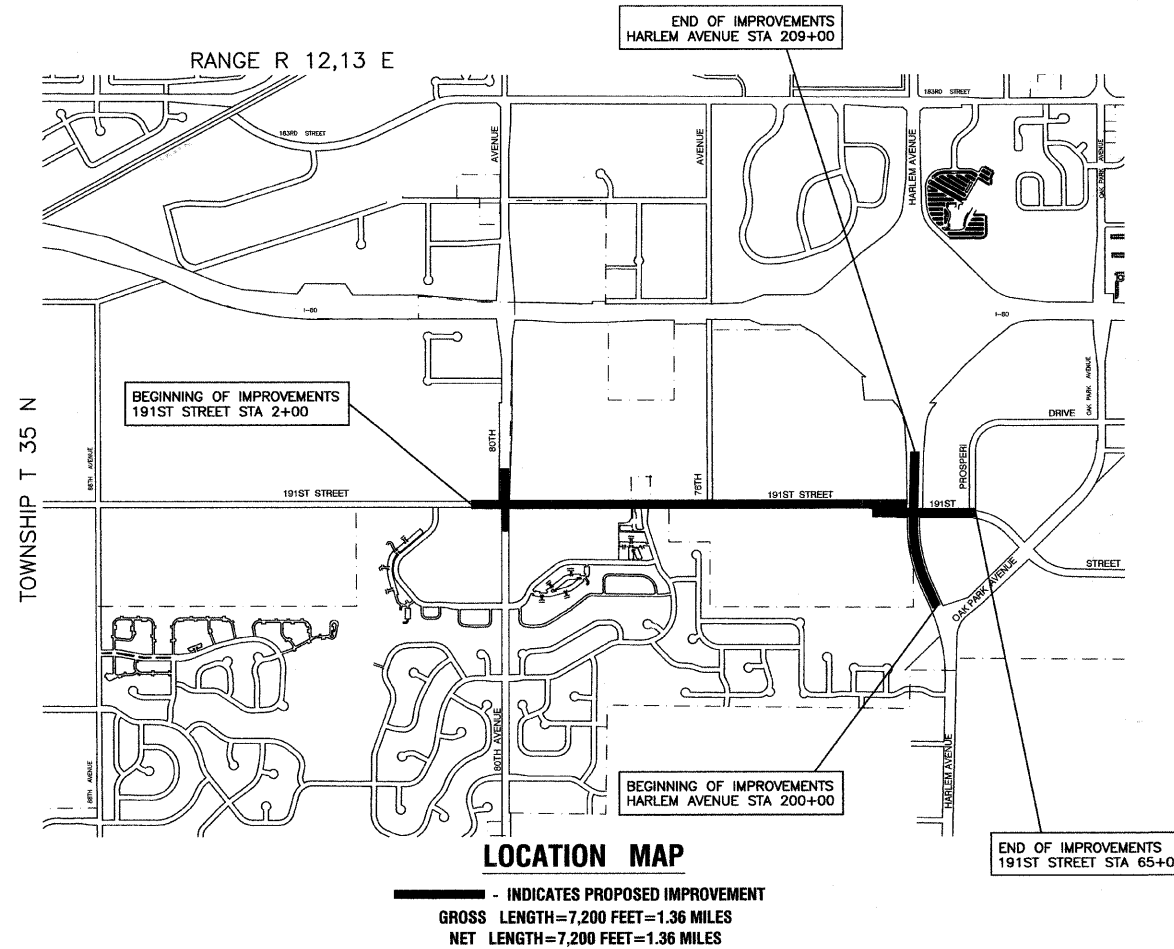


FULL SIZE PLANS HAVE BEEN PREPARED USING STANDARD ENGINEERING SCALES, REDUCED SIZED PLANS WILL NOT CONFORM TO STANDARD SCALES, IN MAKING MEASUREMENTS ON REDUCED PLANS, THE ABOVE SCALES MAY BE USED.

J. U. L. I. E.
JOINT UTILITY LOCATION INFORMATION FOR EXCAVATION
1 - 800 - 892 - 0123 or 811

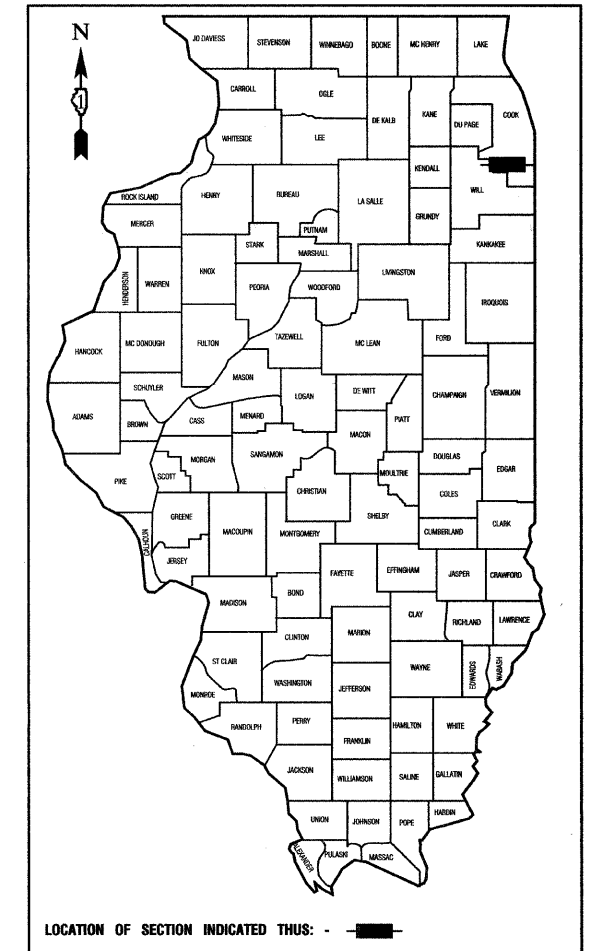
CONTRACT NO. 63288

**FAU 3754 (191ST STREET)
STREET LIGHTING
80TH AVENUE (FAU 2755) TO HARLEM AVENUE (FAP 0348)
SECTION NO.: 09-00107-00-LT
PROJECT NO. ARA-9003 (669)
VILLAGE of TINLEY PARK
WILL COUNTY
JOB NO.: C-91-685-10**



| | | | | |
|--------------------------|------------------------------|---------------------------------|--------------|-----------|
| F. A. L. NO. | SECTION | COUNTY | TOTAL SHEETS | SHEET NO. |
| 3754 | 09-00107-00-LT | WILL | 12 | 1 |
| STA. 2+00 TO STA. 209+00 | TO STA. 65+00 TO STA. 209+00 | | | |
| FED. ROAD DIST. NO. 1 | ILLINOIS | FED. AID PROJECT #09-9003 (669) | | |

CONTRACT #63288



STATE OF ILLINOIS DEPARTMENT OF TRANSPORTATION
DIVISION OF HIGHWAYS

Approved: 10-20-09
Edward J. Tinley
Mayor, Village of Tinley Park

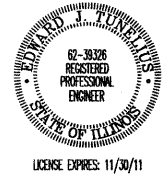
Passed: OCTOBER 26, 2009
Christophe
District 1 Engineer of Local Roads & Streets

Released for Bid Based on Limited Review: OCTOBER 26, 2009
Diana M. O'Keefe
Deputy Director of Highways, Region 1 Engineer

PRINTED BY THE AUTHORITY OF THE STATE OF ILLINOIS

PREPARED BY OR UNDER THE DIRECT SUPERVISION OF:

Edward J. Tinley
10/20/09



I.D.O.T. FIELD ENGINEER: MELCHOR MANGOBA: 847-705-4408
CONSULTANTS: ROBINSON ENGINEERING, LTD. 708-331-6700