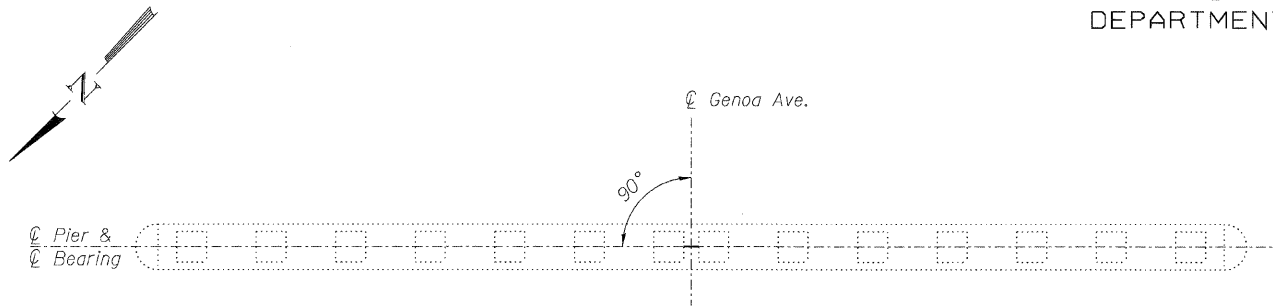
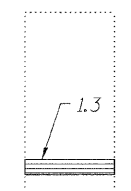


STATE OF ILLINOIS
DEPARTMENT OF TRANSPORTATION

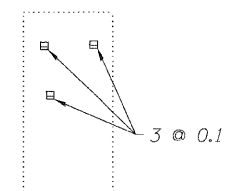
| | |
|--------------|-----------|
| TOTAL SHEETS | SHEET NO. |
| 77 | 60 |



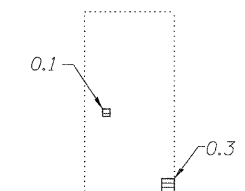
TOP VIEW



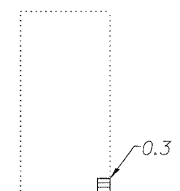
SECTION A-A



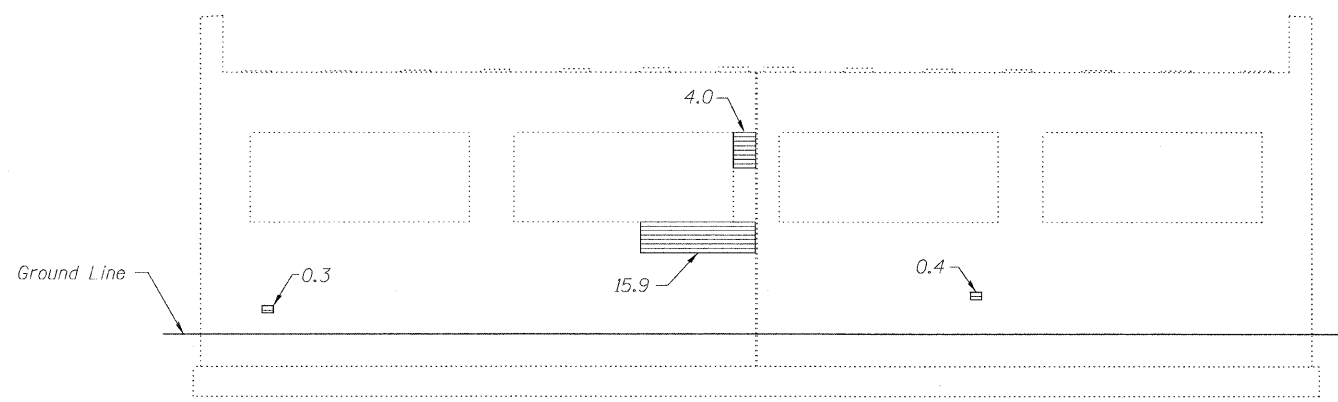
SECTION B-B



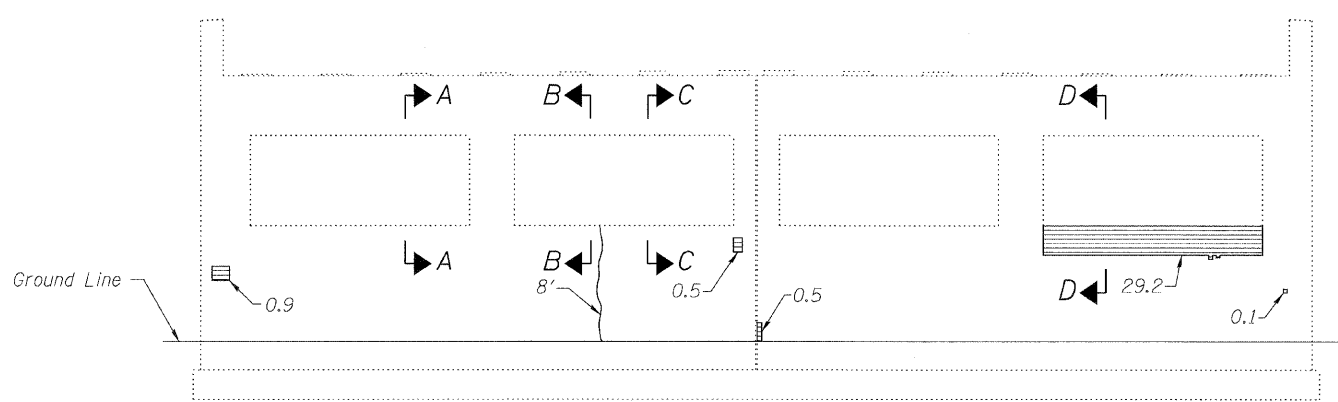
SECTION C-C



SECTION D-D



NORTH ELEVATION
(Looking South)



SOUTH ELEVATION
(Looking North)

NOTES:

1. Repair of the existing pier shall include but not be limited to the areas shown. The actual areas to be repaired will be determined by the Engineer at the time of construction.
2. All areas are in square feet.
3. All crack lengths are in feet.

LEGEND

- Indicates Limits of Structural Repair of Concrete
- Indicates Length of Epoxy Crack Injection

BILL OF MATERIAL

| ITEM | UNIT | QUANTITY |
|--|-------|----------|
| Epoxy Crack Injection | Foot | 8 |
| Structural Repair of Concrete (Depth Equal to or Less than 5") | Sq Ft | 54 |

PIER REPAIRS
STRUCTURE NO. 016-2030

| | | | | | | |
|--|--------------|---------------------------------------|---------|------------------|--------------|--------------------|
| LIN ENGINEERING, LTD. Consulting Engineers Chatham, Illinois | SHEET NO. 30 | F.A.I. RTE. | SECTION | COUNTY | TOTAL SHEETS | SHEET NO. |
| | 32 SHEETS | 57 | 2222.3B | COOK | 77 | 60 |
| Designed By: ESH Date: 7/2009 | | Checked By: MTH File: 016-2030.dgn | | Drawn By: ESH | | CONTRACT NO. 62119 |
| FED. ROAD DIST. NO. | | ILLINOIS | | FED. AID PROJECT | | |