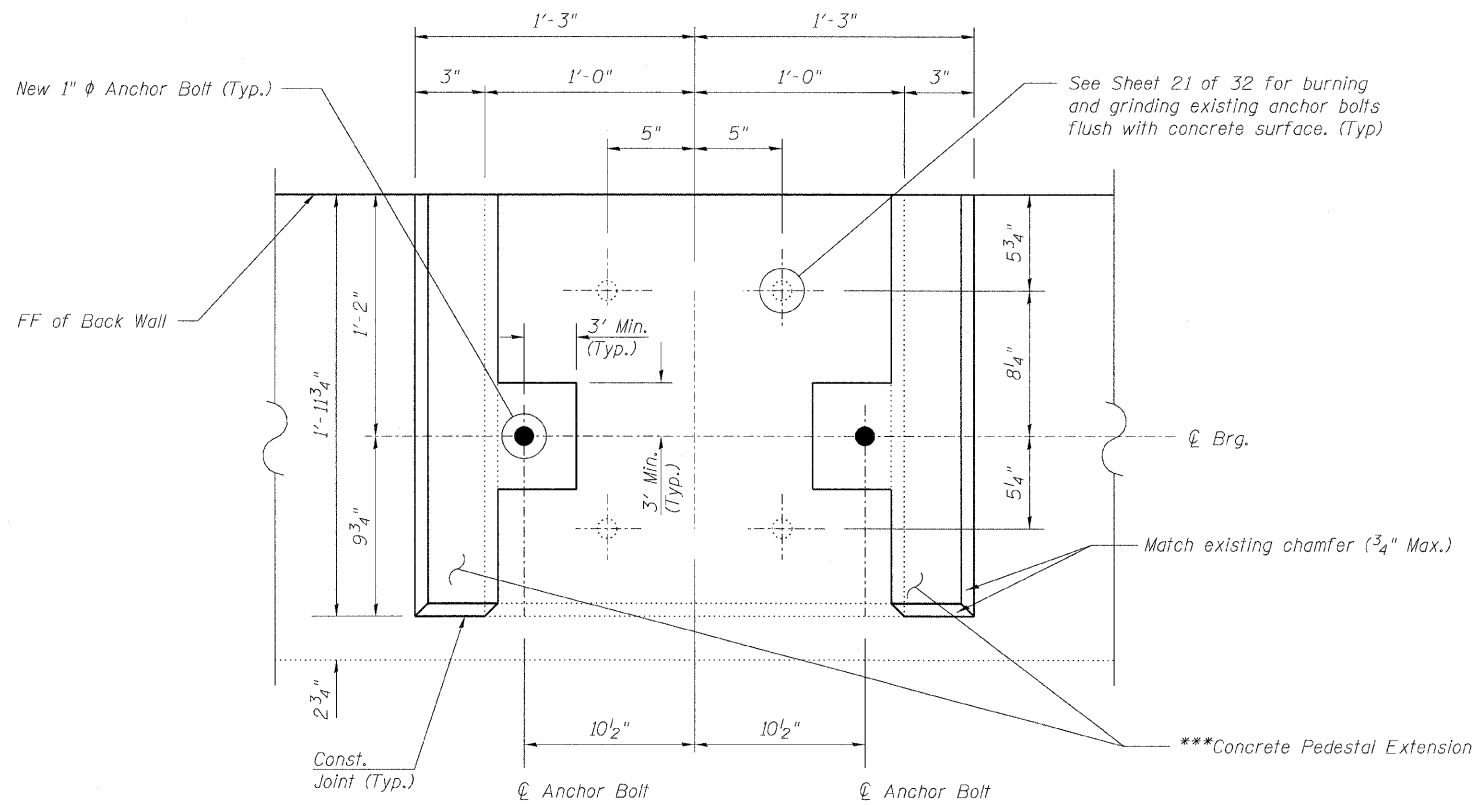
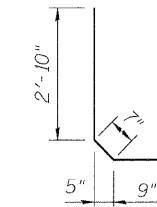
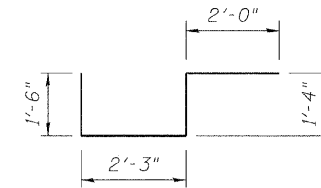
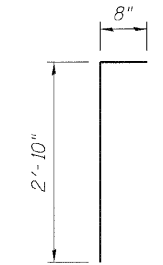
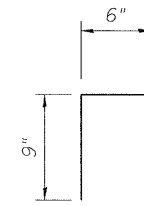
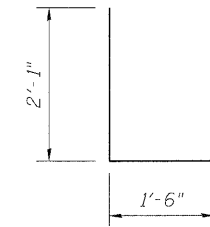
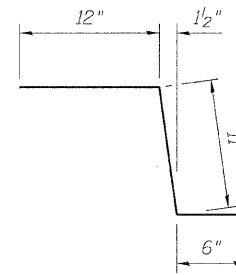


BILL OF MATERIAL

Bar	No.	Size	Length	Shape
c <sub>20</sub> (E)	4	#5	7'-2"	—
c <sub>21</sub> (E)	4	#5	2'-5"	—
c <sub>22</sub> (E)	8	#5	3'-0"	—
d <sub>20</sub> (E)	28	#4	2'-0"	⊏
d <sub>21</sub> (E)	144	#6	2'-11"	—
d <sub>22</sub> (E)	252	#5	2'-1"	—
d <sub>23</sub> (E)	8	#6	7'-1"	⊏
d <sub>24</sub> (E)	6	#6	3'-7"	⊏
h <sub>20</sub> (E)	22	#5	34'-2"	—
h <sub>21</sub> (E)	8	#6	34'-2"	—
h <sub>22</sub> (E)	12	#5	11'-4"	—
h <sub>23</sub> (E)	24	#5	18'-2"	—
h <sub>24</sub> (E)	12	#5	4'-7"	—
v <sub>20</sub> (E)	70	#4	3'-6"	⊏
v <sub>21</sub> (E)	70	#4	4'-2"	⊏
v <sub>22</sub> (E)	140	#4	4'-0"	—
v <sub>23</sub> (E)	54	#5	3'-10"	—
Structure Excavation		Cu. Yd.	28.0	
Concrete Structures		Cu. Yd.	13.6	
Reinforcement Bars, Epoxy Coated		Pound	4200	
Concrete Sealer		Sq. Ft.	425	



\*\*\* Remove existing bearing seat pedestal within 3" minimum around new anchor bolt location down to top of existing beam seat. Clean surface below concrete pedestal extension of debris, calcification deposits and any other foreign (non-concrete) material. Construct pedestal extension to locations shown level with existing concrete pedestal. If resulting surface is uneven, grind smooth. Cost included with Concrete Structures.



NOTES

- For location of Detail C, see Sheet 27 of 32.
- For details of Bar Splicers, see Sheet 32 of 32.

SOUTH ABUTMENT DETAILS  
STRUCTURE NO. 016-2030

<p>LIN ENGINEERING, LTD. Consulting Engineers Chatham, Illinois</p>	SHEET NO. 29	F.A.I. RTE.	SECTION	COUNTY	TOTAL SHEETS	SHEET NO.
	32 SHEETS	57	2222.3B	COOK	77	59
Designed By: ESH Checked By: MTH Date: 7/2009		Drawn By: ESH File: 016-2030.dgn		CONTRACT NO. 62119		
		FED. ROAD DIST. NO.		ILLINOIS FED. AID PROJECT		