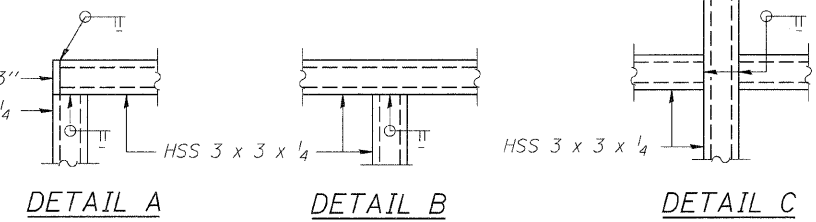
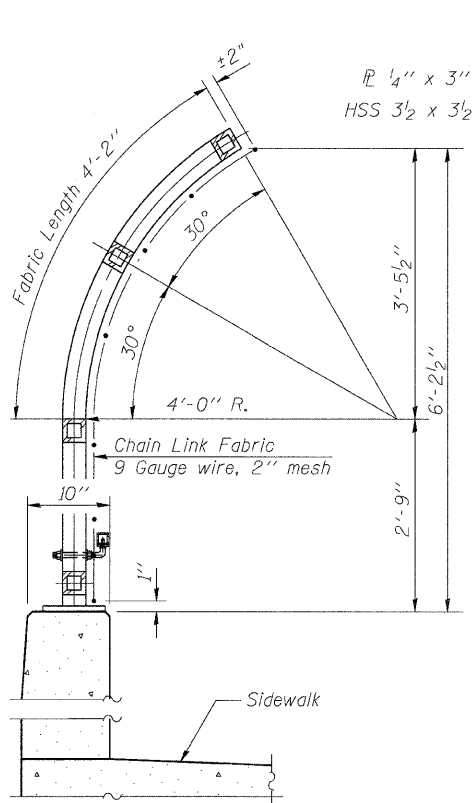
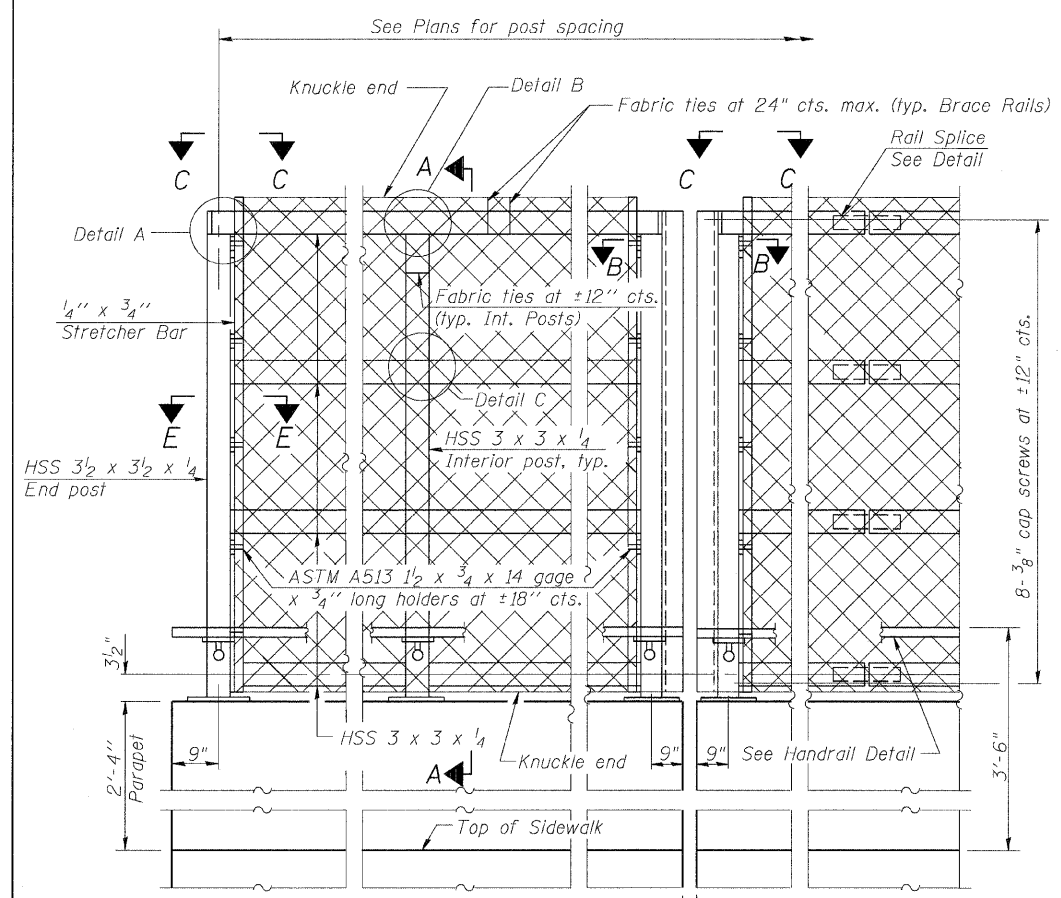
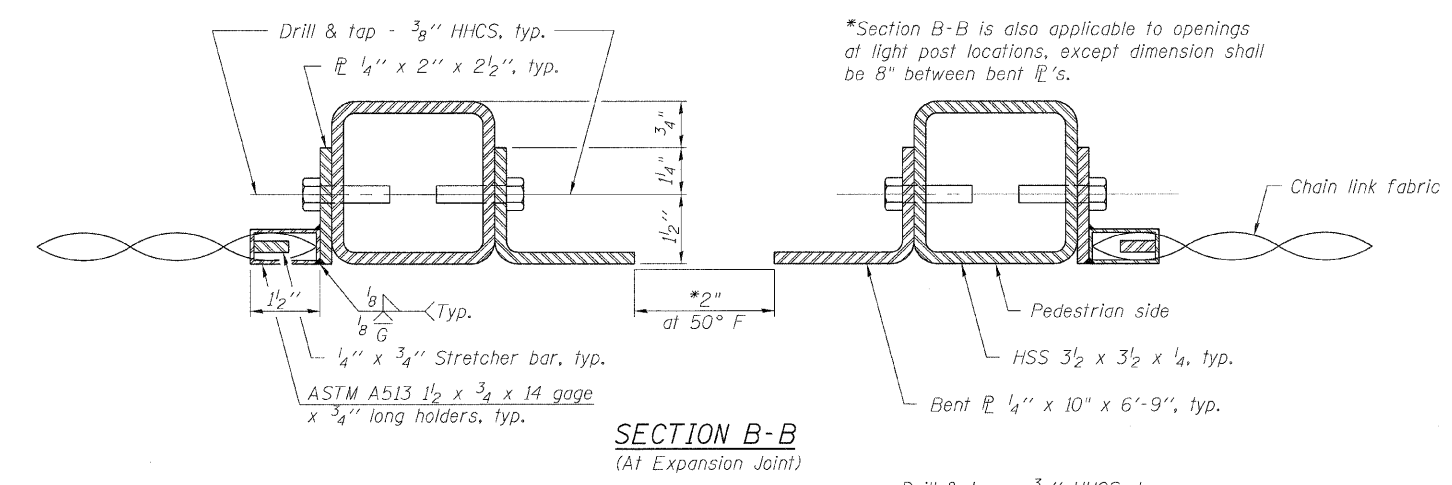


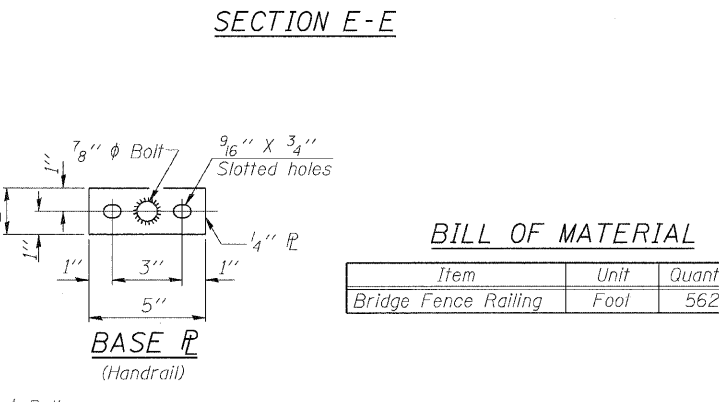
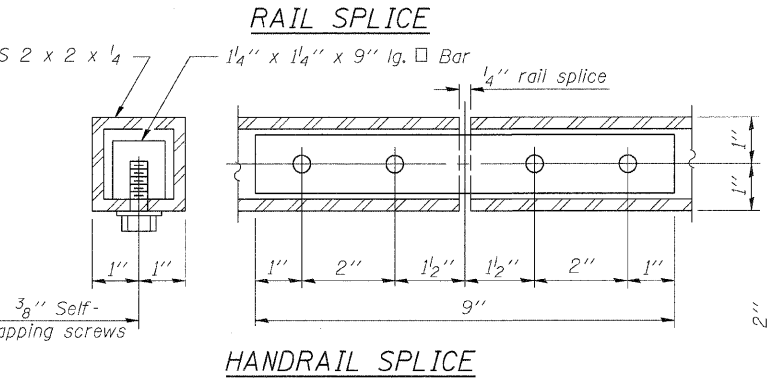
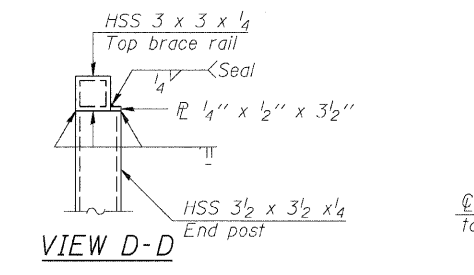
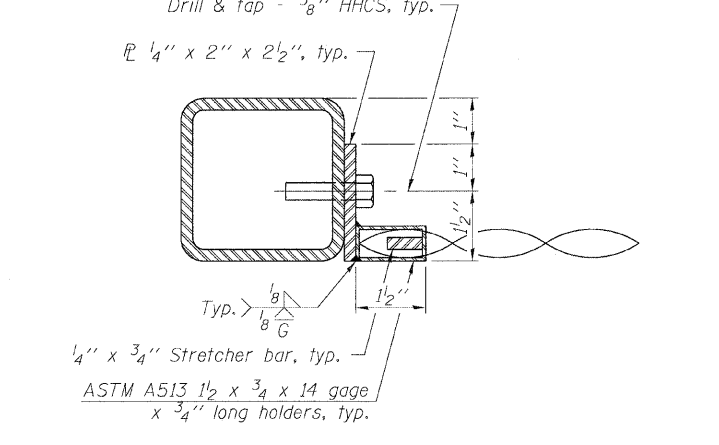
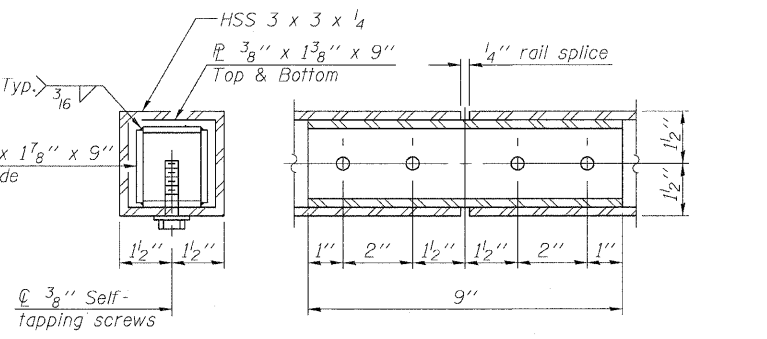
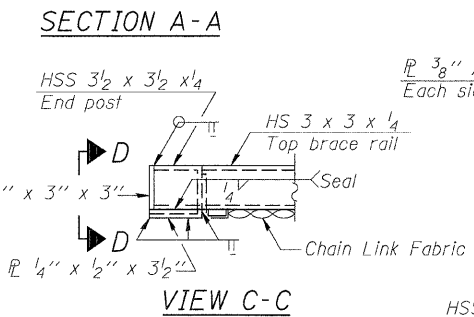
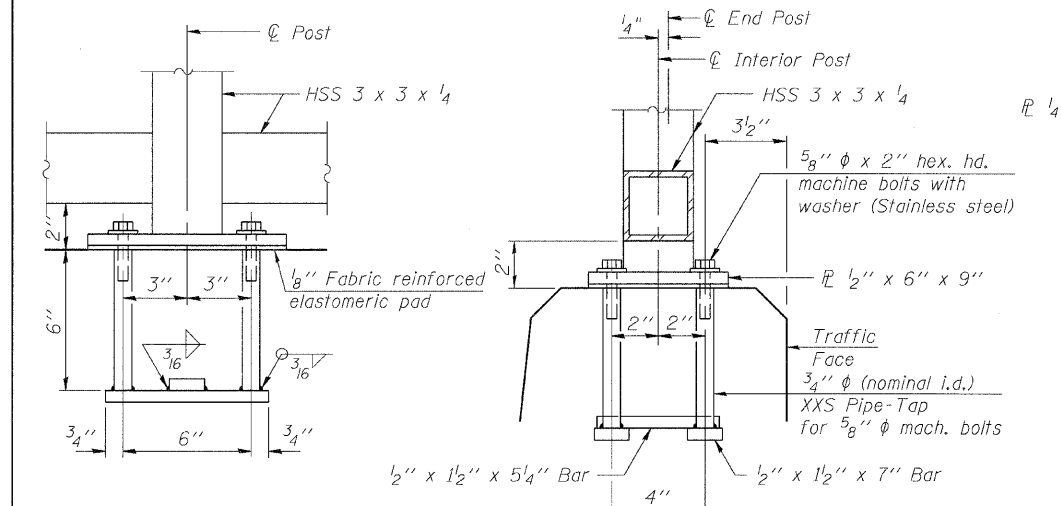
STATE OF ILLINOIS  
DEPARTMENT OF TRANSPORTATION



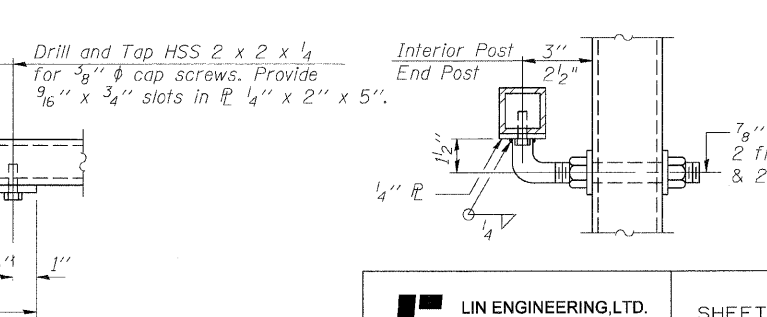
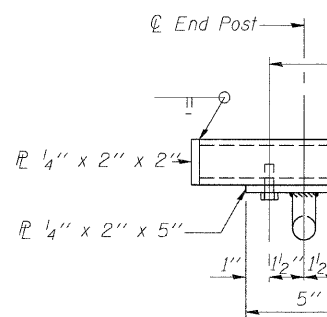
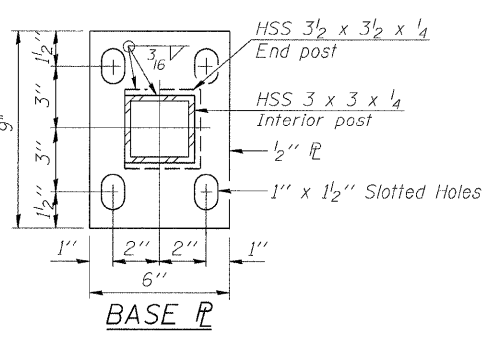
All steel rail elements shall be galvanized according to Article 509.05 of the Standard Specifications.



\*Section B-B is also applicable to openings at light post locations, except dimension shall be 8" between bent 1/4"s.



In lieu of the cast-in-place anchor device shown, the Contractor has the option of drilling and setting 5/8" φ anchor rods according to Article 509.06 of the Standard Specifications. Embedment shall be according to the manufacturer's specifications.



**BILL OF MATERIAL**

Item	Unit	Quantity
Bridge Fence Railing	Fool	562

**BRIDGE FENCE RAILING  
PARAPET MOUNTED  
STRUCTURE NO. 016-2030**

**LIN ENGINEERING, LTD.**  
Consulting Engineers  
Chatham, Illinois

Designed By: ESH  
Checked By: MTH  
Date: 7/2009

Drawn By: ESH  
File: 016-2030.dwg

SHEET NO. 17	F.A.I. RTE.	SECTION	COUNTY	TOTAL SHEETS	SHEET NO.
32 SHEETS	57	2222.3B	COOK	77	47
FED. ROAD DIST. NO.			ILLINOIS FED. AID PROJECT		
CONTRACT NO. 62119					