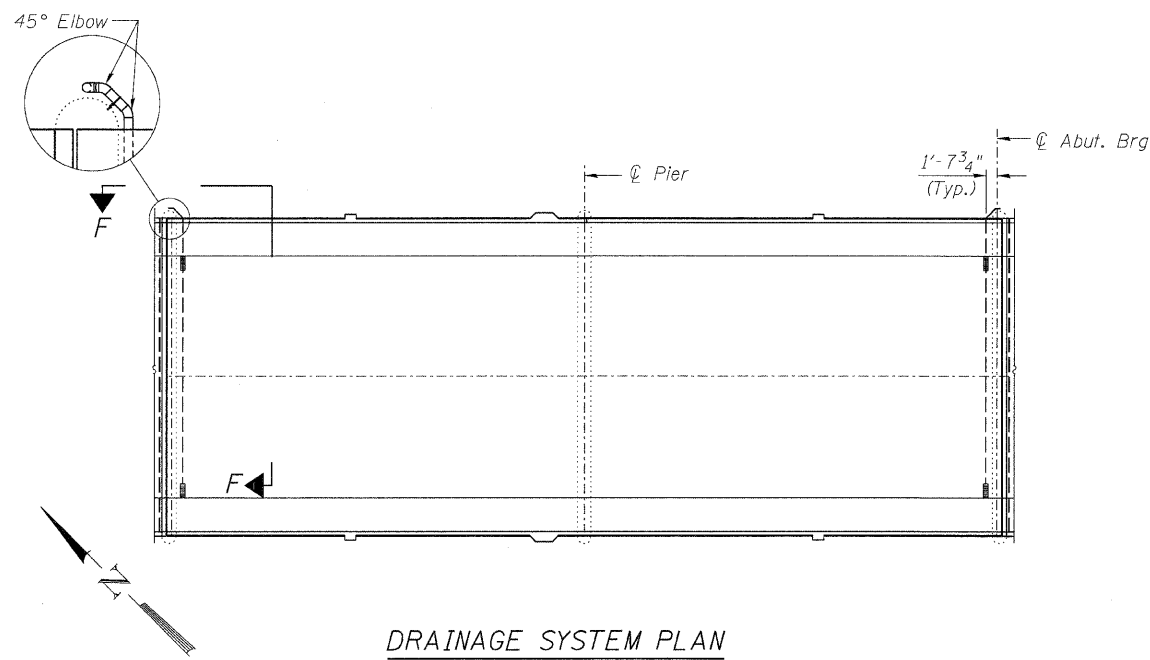
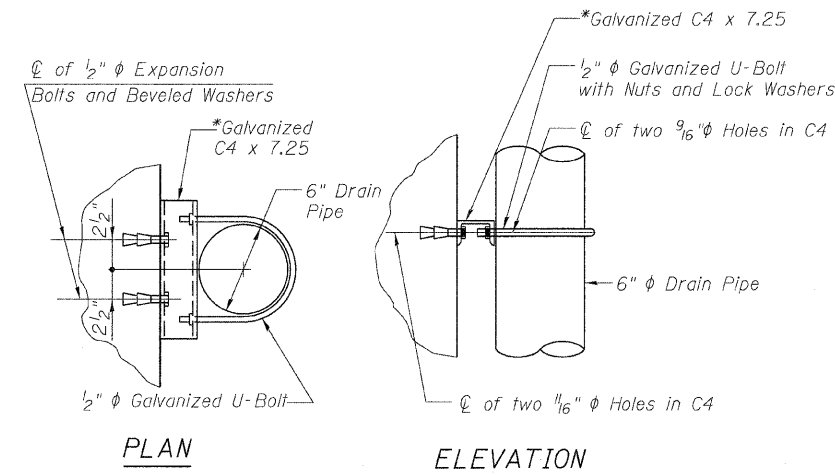


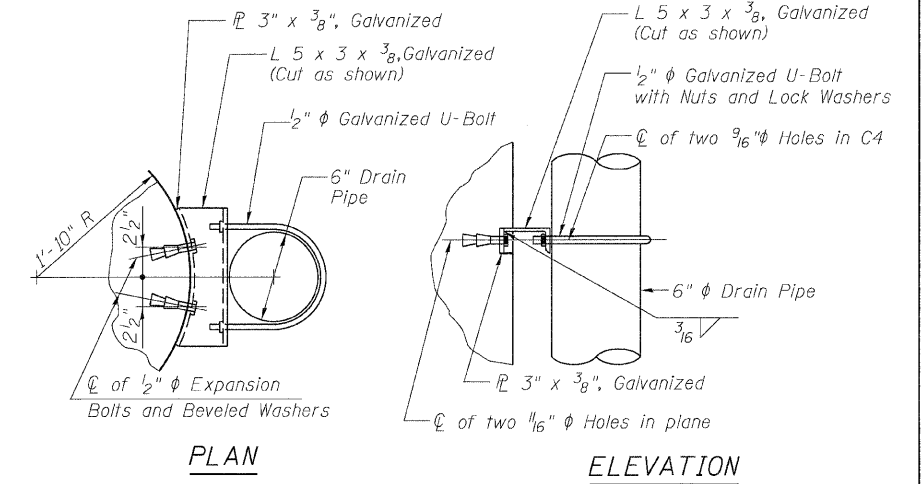
STATE OF ILLINOIS  
DEPARTMENT OF TRANSPORTATION



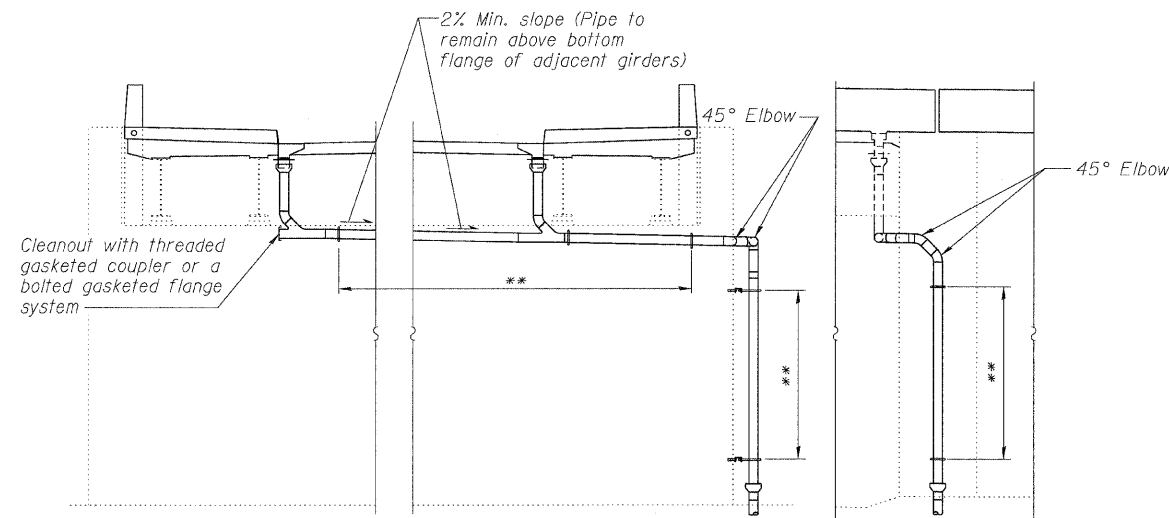
DRAINAGE SYSTEM PLAN



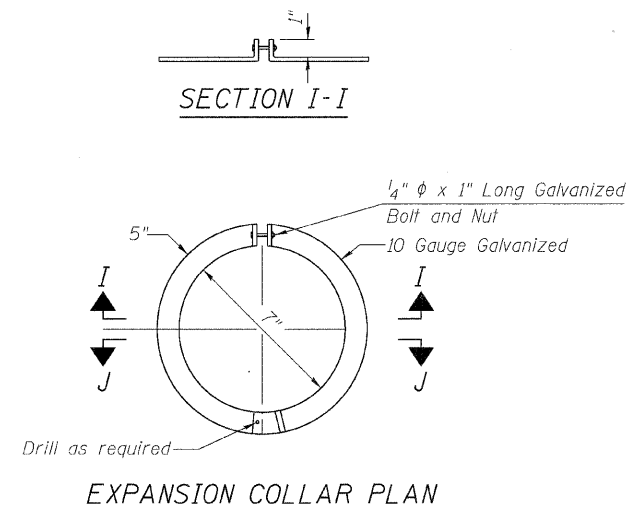
PIPE SUPPORT DETAIL  
ON FLAT SURFACE



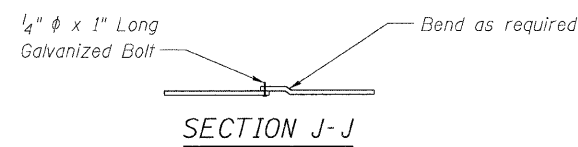
PIPE SUPPORT DETAIL  
ON CURVED SURFACE



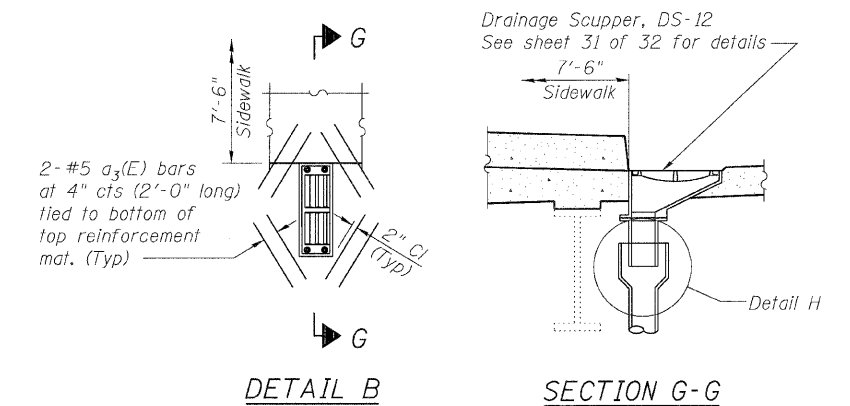
SECTION F-F



EXPANSION COLLAR PLAN

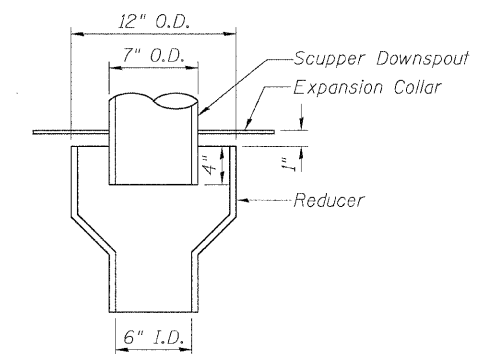


SECTION J-J



DETAIL B

SECTION G-G



DETAIL H

SUPERSTRUCTURE DETAILS -2  
STRUCTURE NO. 016-2030

Notes:

See Special Provisions for Drainage System installation and material.

See Sheet 11 of 32 for locations of Detail B.

See Roadway Drainage and Utilities Sheets for connection of drainage system to existing I-57 catch basin structures.

\* Larger channel sections may be used if required for drain pipe to clear miscellaneous attachments to substructure units as approved by the engineer.

\*\* Pipe Supports @ 5'-0" Max Spacing.

	SHEET NO.13	F.A.I. RTE.	SECTION	COUNTY	TOTAL SHEETS	SHEET NO.
	32 SHEETS	57	2222.3B	COOK	77	43
Designed By: ESH Date: 7/2/09		Checked By: MTH File: 016-2030.dgn		Drawn By: ESH		CONTRACT NO. 62119
		FED. ROAD DIST. NO.		ILLINOIS		FED. AID PROJECT