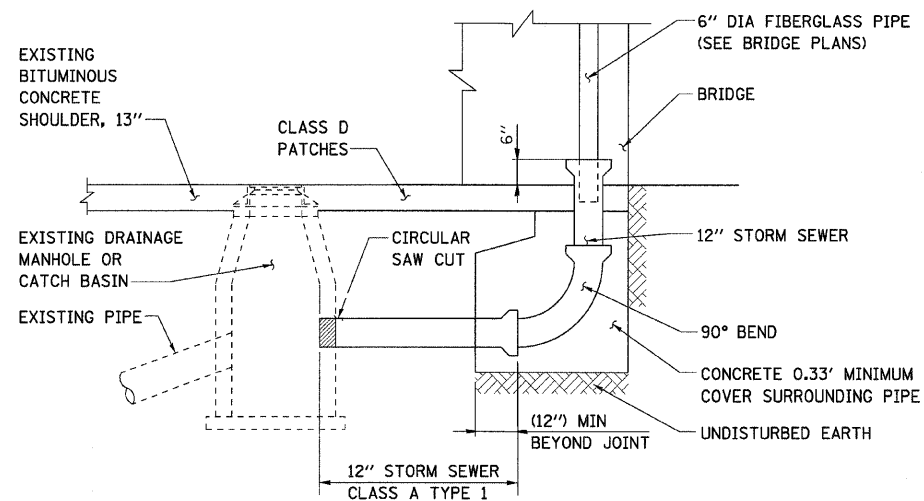


F.A.I. RTE.	SECTION	COUNTY	TOTAL SHEETS	SHEET NO.
57	2222.3B	COOK	77	20
STA. 12+06.00		TO STA.16+17.11		
FED. ROAD DIST. NO.		ILLINOIS	FED. AID PROJECT	



DOWNSPOUT CONNECTION DETAIL

NOTES:

1. SEE DRAINAGE PLANS FOR PIPE LENGTHS.
2. STORM SEWER SHALL BE PAID FOR AS STORM SEWER OF THE CLASS, TYPE, AND SIZE SHOWN.
3. TRENCH BACKFILL WILL BE MEASURED AND PAID FOR SEPERATELY.

DESCRIPTION:

THIS ITEM SHALL CONSIST OF CONNECTING A FIBERGLASS DOWNSPOUT FROM THE BRIDGE DECK DRAINAGE SCUPPERS TO AN EXISTING MANHOLE OR OTHER DRAINAGE STRUCTURE AS SHOWN ON THE PLANS AND THE DOWNSPOUT CONNECTION DETAIL.

GENERAL REQUIREMENTS:

THE CONNECTION HOLE IN THE DRAINAGE STRUCTURE SHALL BE A CIRCULAR SAW CUT NO MORE THAN AN INCH LARGER THAN THE OUTSIDE DIAMETER OF THE CONNECTION PIPE. A CONDUIT OF THE SIZE REQUIRED SHALL BE INSTALLED IN THE HOLE. THE SPACE BETWEEN THE CONDUIT AND THE MANHOLE SHALL BE SEALED WITH MASONRY TO PROVIDE A WATERPROOF CONNECTION.

BASIS OF PAYMENT:

THIS WORK WILL BE PAID FOR AT THE CONTRACT UNIT PRICE EACH FOR DOWNSPOUT CONNECTION AND INCLUDE PIPE MATERIALS, CONCRETE, EXCAVATION, CONNECTING TO THE EXISTING DRAINAGE STRUCTURE, AND ALL OTHER INCIDENTALS NECESSARY TO CONNECT THE 6" FIBERGLASS DOWNSPOUT TO AN EXISTING DRAINAGE STRUCTURE. THE STORM SEWER AND TRENCH BACKFILL SHALL BE MEASURED AND PAID FOR SEPARATELY.

PLOT DATE = Thursday, March 04, 2010
 FILE NAME = S:\11-CADD\01-11\12-10-10\101.dgn
 PLOT SCALE = 50%
 USER NAME = 3679



REVISIONS	
NAME	DATE

ILLINOIS DEPARTMENT OF TRANSPORTATION

**MISCELLANEOUS DETAILS
 GENOA AVENUE OVER FAI-57**

SCALE: VERT. NONE
 HORIZ.
 DATE: 3/1/2010

DRAWN BY: E.D.
 CHECKED BY: A.A.C.