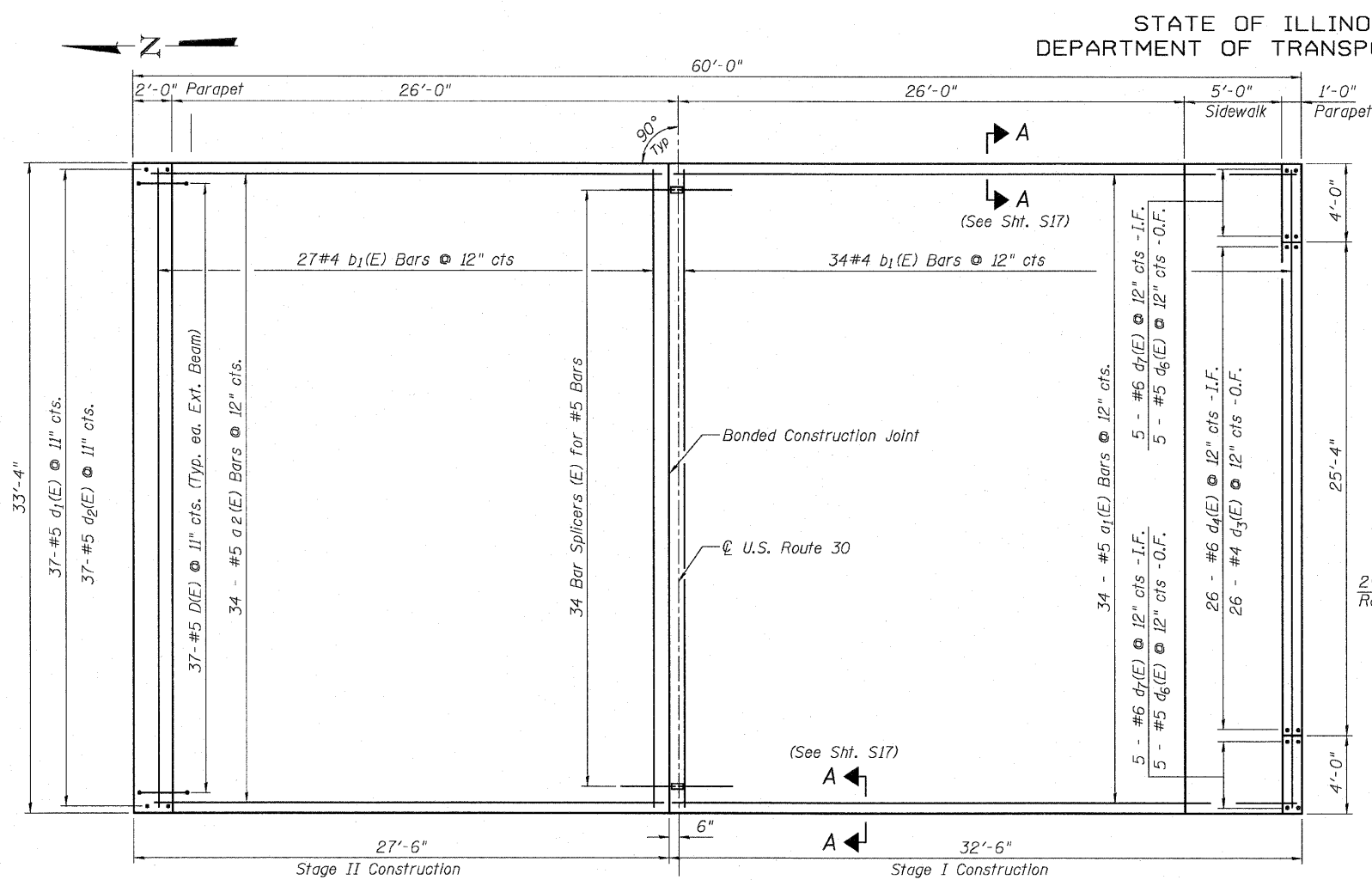
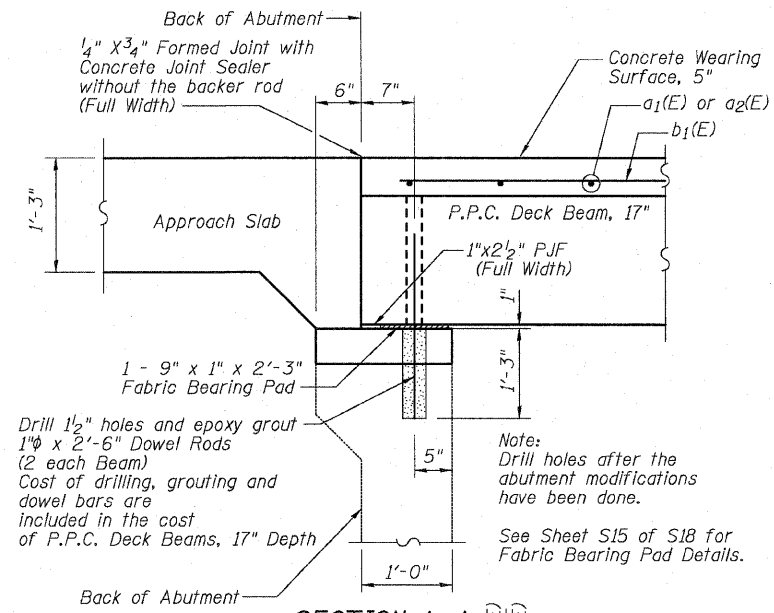


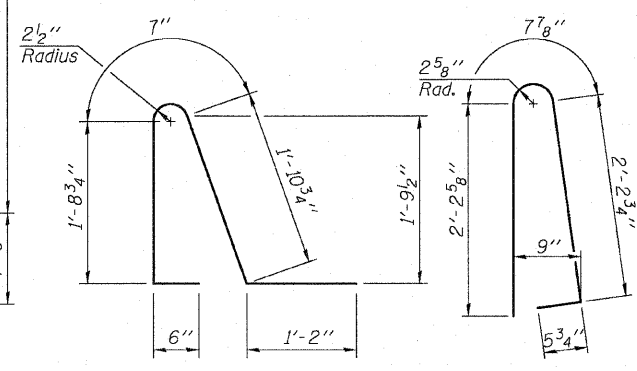
STATE OF ILLINOIS
DEPARTMENT OF TRANSPORTATION



DECK PLAN



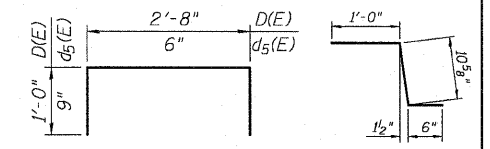
SECTION A-A



BAR d2(E)

BAR d1(E)

BAR d3(E), d4(E)
BAR d6(E) AND d7(E)

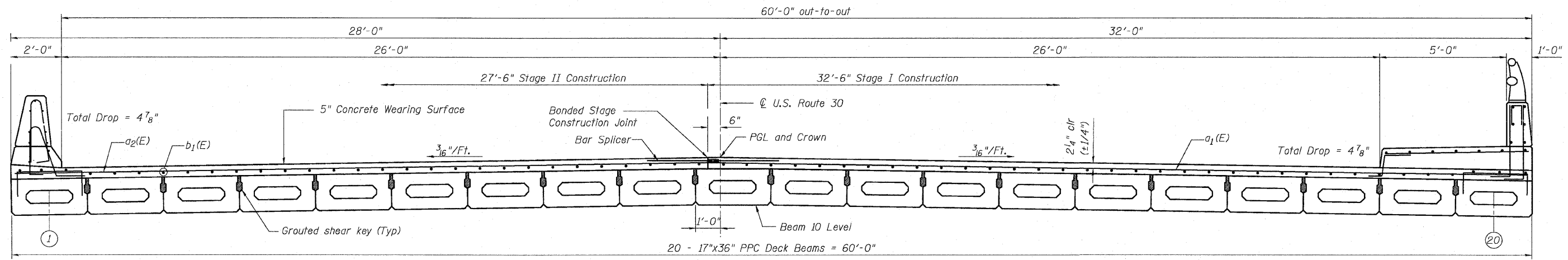


BAR D(E) and d5(E)

BAR c1(E)

SUPERSTRUCTURE
BILL OF MATERIAL

Bar	No.	Size	Length	Shape
a1(E)	34	#5	32'-4"	
a2(E)	34	#5	27'-4"	
b1(E)	69	#4	33'-1"	
c1(E)	34	#5	2'-5"	
c2(E)	34	#5	5'-7"	
D(E)	74	#5	4'-8"	
d1(E)	37	#5	5'-7"	
d2(E)	37	#5	5'-11"	
d3(E)	26	#4	3'-7"	
d4(E)	26	#6	3'-7"	
d5(E)	8	#4	2'-0"	
d6(E)	10	#4	5'-5"	
d7(E)	10	#6	5'-5"	
e1(E)	24	#4	16'-5"	
e2(E)	1	#4	33'-0"	
e3(E)	1	#8	33'-0"	
e4(E)	12	#4	3'-9"	
Item	Unit	Total		
Reinforcement Bars, Epoxy Coated	Pound	5110		
Concrete Superstructure	Cu. Yd.	13		
Bars Splicer	Each	34		
Bridge Deck Grooving	Sq. Yd.	178		
Protective Coat	Sq. Yd.	244		
Concrete Wearing Surface, 5 inches	Sq. Yd.	223		



CROSS SECTION
Looking East

SUPERSTRUCTURE PLAN AND
CROSS SECTION
STRUCTURE NO. 016-2503

DESIGNED	JPM
CHECKED	TG
DRAWN	MPS
CHECKED	JPM, TG



MIN. BAR LAP
*5 = 2'-2"

Note:
For Parapet and Sidewalk reinforcement
See "Superstructure -Parapet Plan, Elevations
and Details", Sheet S10 of S18

All concrete wearing surfaces in each stage
shall be placed prior to casting approach slab.

I.F. = Denotes Inside Face
O.F. = Denotes Outside Face

SHEET NO.S9	F.A.P. RTE.	SECTION	COUNTY	TOTAL SHEETS	SHEET NO.
S18 SHEETS	353	11-5-B	COOK	39	21
CONTRACT NO. 60J44					
ILLINOIS FED. AID PROJECT					