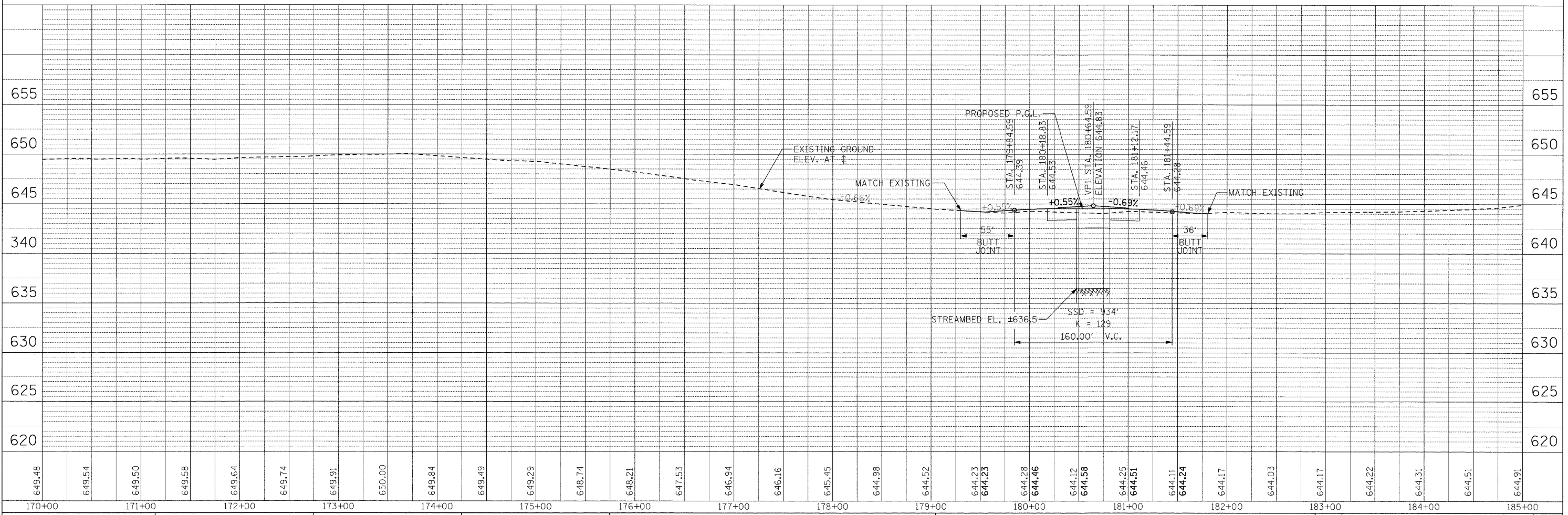
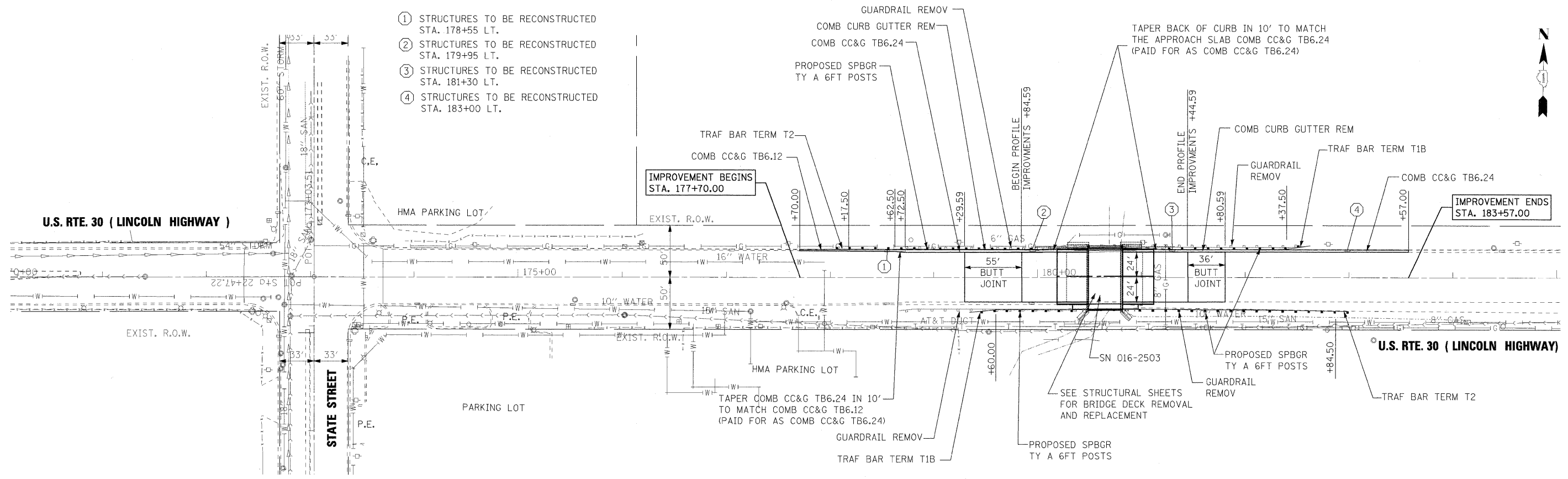


PLAN	DATE
REVISIONS	BY
NOTED	
ALIGNED	
CHECKED	
FILE NAME	

PROFILE	DATE
REVISIONS	BY
NOTED	
GRADES CHECKED	
FILE NAME	

- ① STRUCTURES TO BE RECONSTRUCTED STA. 178+55 LT.
- ② STRUCTURES TO BE RECONSTRUCTED STA. 179+95 LT.
- ③ STRUCTURES TO BE RECONSTRUCTED STA. 181+30 LT.
- ④ STRUCTURES TO BE RECONSTRUCTED STA. 183+00 LT.



DESIGNED	- RJD	REVISED	-
DRAWN	- JS	REVISED	-
CHECKED	- TWL	REVISED	-
DATE	- 4/20/2010	REVISED	-

**STATE OF ILLINOIS  
DEPARTMENT OF TRANSPORTATION**

**U.S. ROUTE 30 (LINCOLN HWY.) OVER TRIBUTARY A OF THORN CREEK  
EXISTING & PROPOSED PLAN AND PROFILE**

F.A.P. RTE.	SECTION	COUNTY	TOTAL SHEETS	SHEET NO.
353	11-5-B	COOK	39	7
CONTRACT NO. 60J44				
FED. ROAD DIST. NO. ILLINOIS FED. AID PROJECT				

SCALE: 1"=50' SHEET NO. 1 OF 1 SHEETS STA. 177+70 TO STA. 183+57