

F.A.P. RTE.	SECTION	COUNTY	TOTAL SHEETS	SHEET NO.
353	11-5-B	COOK	39	1
FED. ROAD DIST. No. 1 ILLINOIS		CONTRACT No. 60J44		

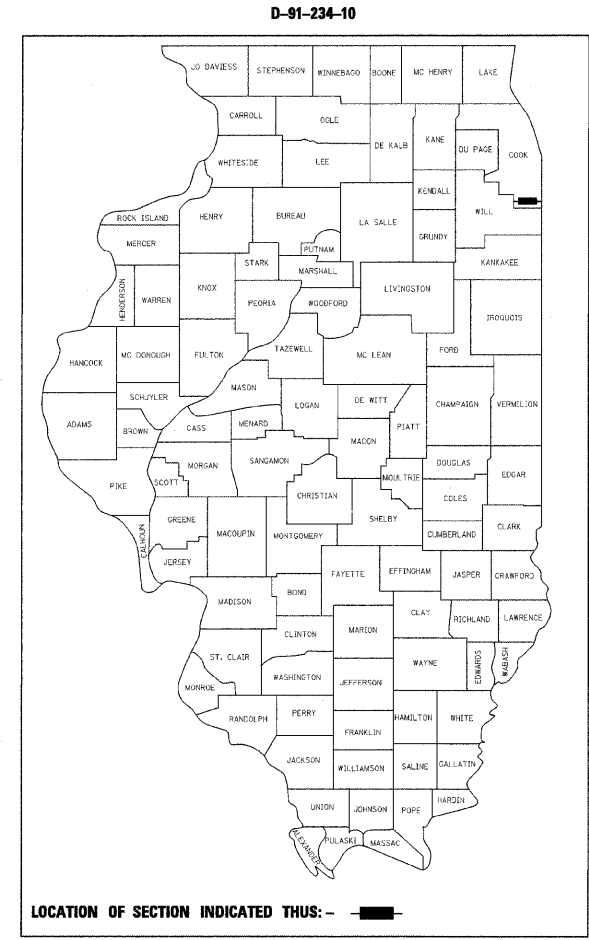
STATE OF ILLINOIS
DEPARTMENT OF TRANSPORTATION
DIVISION OF HIGHWAYS

**PROPOSED
HIGHWAY PLANS**

FAP 353 / US 30 OVER TRIBUTARY A OF THORN CREEK
BRIDGE SUPERSTRUCTURE REPLACEMENT
SECTION 11-5-B
PROJECT NO. - -
COOK COUNTY
C-91-234-10

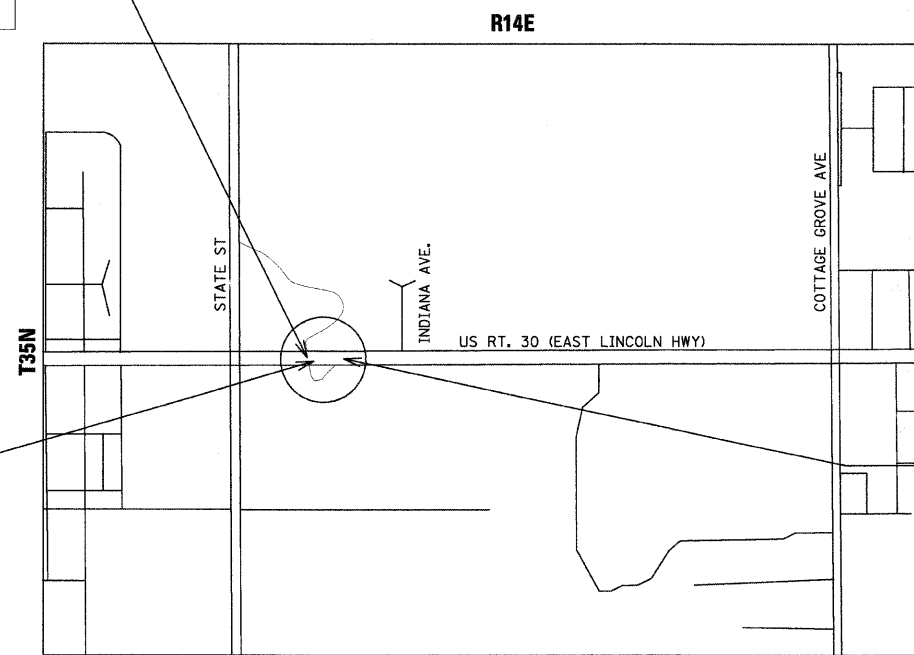
FOR INDEX OF SHEETS, SEE SHEET NO. 2

TRAFFIC DATA:
EXISTING ADT US 30 16900 (2007)
POSTED SPEED = 40 MPH



LOCATION OF SECTION INDICATED THIS: - -

PROJECT LOCATION
US 30 (LINCOLN HWY)
OVER TRIBUTARY A
OF THORN CREEK
STRUCTURE NO. 016-2503

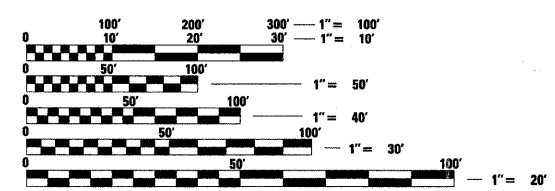


BLOOM TOWNSHIP
LOCATION MAP
NOT TO SCALE

IMPROVEMENT BEGINS
STA. 177 + 70

IMPROVEMENT ENDS
STA. 183 + 57

PROJECT IS LOCATED IN THE
CITY OF CHICAGO HEIGHTS



FULL SIZE PLANS HAVE BEEN PREPARED USING STANDARD
ENGINEERING SCALES. REDUCED SIZED PLANS WILL NOT
CONFORM TO STANDARD SCALES. IN MAKING MEASUREMENTS
ON REDUCED PLANS, THE ABOVE SCALES MAY BE USED.

J.U.L.I.E.
JOINT UTILITY LOCATION INFORMATION FOR EXCAVATION
1-800-892-0123 OR 811

STATE OF ILLINOIS
DEPARTMENT OF TRANSPORTATION
DIVISION OF HIGHWAYS

SUBMITTED APRIL 21 2010
Diane M. O'Keefe
DEPUTY DIRECTOR OF HIGHWAYS, REGION ENGINEER

MAY 7 2010
Scott E. Stitt, P.E.
Acting ENGINEER OF DESIGN AND ENVIRONMENT

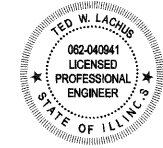
MAY 7 2010
Christine M. Reed
DIRECTOR OF HIGHWAYS, CHIEF ENGINEER

PRINTED BY THE AUTHORITY
OF THE STATE OF ILLINOIS

GROSS LENGTH OF PROJECT = 587.00 FEET = 0.11 MILES
NET LENGTH OF PROJECT = 587.00 FEET = 0.11 MILES

PROJECT MANAGER RAJENDRA SHAH (847) 705-4555
PROJECT ENGINEER MICHELLE AQUINO (847) 705-4606
CONTRACT NO. 60J44

Primera
100 S. WACKER DRIVE SUITE 700 CHICAGO IL 60606.
P:312-606-0910 F:312-606-0415



Ted W. Lachus
TED W. LACHUS, P.E.
EXPIRES 11-30-2011
DATE 4-20-2010