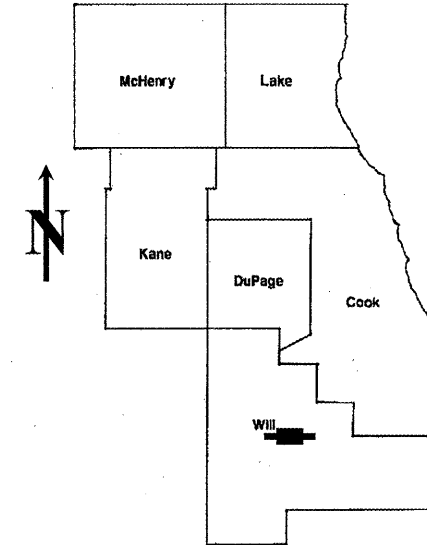


| ROUTE | SECTION | COUNTY | TOTAL SHEETS | SHEET NUMBER |
|-------|-------------|--------|--------------|--------------|
| I-80 | 2009-113 PP | WILL | // | 1 |

STATE OF ILLINOIS
DEPARTMENT OF TRANSPORTATION
DIVISION OF HIGHWAYS
DISTRICT ONE
PROPOSED HIGHWAY PLANS

CONTRACT NO. 60J28

D-91-218-10



LOCATION OF IMPROVEMENT INDICATED THUS:

FOR INDEX OF SHEETS SEE SHEET 2

FAI 80: INTERSTATE-80
 CENTER ST. TO WEST OF US 30
 SECTION: 2009-113 PP
 INTERMITTENT PAVEMENT RESURFACING
 WILL COUNTY
 C-91-218-10

CONTRACT NO. 60J28

DISTRICT ONE - DESIGN - PLAN PREPARATION ENGINEER:
 KEN ENG / (847) 705-4247

STATE OF ILLINOIS
DEPARTMENT OF TRANSPORTATION
DIVISION OF HIGHWAYS

SUBMITTED: March 22 2010

Dean O'Neil
 DEPUTY DIRECTOR OF HIGHWAYS, REGION ENGINEER

May 7 2010
Scott E. Stitt P.E.
 acting ENGINEER OF DESIGN AND ENVIRONMENT

May 7 2010
Christine M. Reed
 DIRECTOR, DIVISION OF HIGHWAYS

PRINTED BY THE AUTHORITY
OF THE STATE OF ILLINOIS

J.U.L.I.E.: JOINT UTILITY LOCATION
INFORMATION FOR EXCAVATION
(312) 744-7000

INDEX OF SHEETS

| <u>SHEET NO.</u> | <u>DESCRIPTION</u> |
|------------------|---|
| 1 | TITLE SHEET |
| 2 | INDEX OF SHEETS, STATE STANDARDS AND GENERAL NOTES |
| 3 | SUMMARY OF QUANTITIES |
| 4 | LOCATION MAP |
| 5 | PATCHING SCHEDULE |
| 6 | BUTT JOINT AND HMA TAPER DETAILS |
| 7 | FREEWAY ENTRANCE AND EXIT RAMP CLOSURE DETAILS |
| 8 | FREEWAY SINGLE & MULTI-LANE WEAVE |
| 9-10 | MULTI-LANE FREEWAY PAVEMENT MARKING DETAILS |
| 11 | FREEWAY SHOULDER CLOSURES AND PARTIAL RAMP CLOSURES |

STATE STANDARDS

| <u>STANDARD NO.</u> | <u>DESCRIPTION</u> |
|---------------------|---|
| 000001-05 | TYPICAL SYMBOLS, ABBREVIATIONS AND PATTERNS |
| 701101-02 | OFF-RD. OPERATIONS, MULTILANE |
| 701400-04 | APPROACH TO LANE CLOSURE, FREEWAY/EXPRESSWAY |
| 701401-05 | LANE CLOSURE, FREEWAY/EXPRESSWAY |
| 701411-06 | LANE CLOSURE, MULTILANE, AT ENTRANCE OR EXIT RAMP |
| 701426-03 | LANE CLOSURE, MULTILANE, INTERMITTENT OR MOVING OPERATION |
| 701446-01 | TWO LANE CLOSURE, FREEWAY/EXPRESSWAY |
| 701901-01 | TRAFFIC CONTROL DEVICES |

HOT-MIX ASPHALT MIXTURE REQUIREMENTS

| MIXTURE TYPE | AC TYPE | AIR VOIDS (%) |
|---|----------|---------------|
| HOT-MIX ASPHALT SURFACE COURSE, MIX "D", N90 (IL 9.5MM), 2" | PG 64-22 | 4% @ 90 GYR |

THE UNIT WEIGHT USED TO CALCULATE ALL HOT-MIX ASPHALT SURFACE MIXTURE QUANTITIES IS 112 LBS/SY/IN.

GENERAL NOTES

BEFORE STARTING ANY EXCAVATION, THE CONTRACTOR SHALL CALL "JULIE" AT (800) 892-0123 OR 811 FOR FIELD LOCATIONS OF BURIED ELECTRIC, TELEPHONE AND GAS FACILITIES. (48 HOUR NOTIFICATION REQUIRED)

THE CONTRACTOR WILL NOT BE ALLOWED TO SET UP A YARD OR FIELD OFFICE ON STATE (OR TOLLWAY) PROPERTY WITHOUT WRITTEN PERMISSION FROM THE DEPARTMENT (OR ISTHA).

WHEN ARTIFICIAL LIGHTING IS UTILIZED IN NIGHT OPERATIONS, THE CONTRACTOR SHALL EXERCISE THE UTMOST PRECAUTIONS IN PREVENTING ADVERSE VISABILITY TO THE MOTORING PUBLIC AND ADJOINING RESIDENTIAL AREAS.

ANY PAVEMENT MARKINGS AND RAISED REFLECTIVE PAVEMENT MARKERS OBLITERATED BY MILLING AND RESURFACING OPERATIONS ON SIDE STREETS AND ENTRANCES SHALL BE REPLACED AND PAID FOR IN KIND.

BEFORE BEGINNING ANY WORK, THE CONTRACTOR SHALL RETAIN AND RECORD FOR FUTURE REFERENCE, ALL EXISTING PAVEMENT MARKING LINES (AND RAISED REFLECTIVE PAVEMENT MARKERS) IN ORDER THAT THESE LOCATIONS CAN BE RE-ESTABLISHED FOR STRIPING. EXACT LOCATIONS OF ALL PAVEMENT MARKINGS SHALL BE AS DIRECTED BY THE ENGINEER.

ALL PAVEMENT PATCHING LOCATIONS WILL BE DETERMINED IN THE FIELD BY THE ENGINEER.

THE CONTRACTOR SHALL CONTACT THE DISTRICT ONE TRAFFIC CONTROL SUPERVISOR AT (847) 705-4155 A MINIMUM OF 72 HOURS IN ADVANCE OF BEGINNING WORK.

THE ENGINEER SHALL CONTACT MS. CORA MATHIS, AREA TRAFFIC FIELD ENGINEER AT (815) 485-6475 MINIMUM OF TWO (2) WEEKS PRIOR TO PLACEMENT OF PERMANENT PAVEMENT MARKINGS.

THE EXISTING ROADWAY TYPICAL SECTION FOR HOT-MIX ASPHALT SURFACES IS ASSUMED TO HAVE A 3 INCH HOT-MIX ASPHALT OVERLAY ON TOP OF A TEN INCH CONCRETE BASE. THE EXISTING ROADWAY TYPICAL SECTION FOR CONCRETE SURFACES IS ASSUMED TO BE 10 INCHES OF FULL DEPTH PORTLAND CEMENT CONCRETE PAVEMENT.

ALL PAVEMENT PATCHES ON HOT-MIX ASPHALT SURFACES SHOWN IN THE PLANS ARE TO BE TWO (2) INCH MILL AND RESURFACE ONLY. THE MINIMUM WIDTH FOR MILLING AND PATCHING SHALL BE TWO (2) FEET. ALL PAVEMENT PATCHES ON CONCRETE SURFACES ARE TO BE 10 INCH CLASS D PATCHES.

THE COST OF ANY PARTIAL OR FULL DEPTH PATCHING REQUIRED AFTER THE REMOVAL OF THE EXISTING 2 INCH HOT-MIX ASPHALT SURFACE SHALL BE PAID FOR IN ACCORDANCE WITH ARTICLE 109.04 OF THE STANDARD SPECIFICATIONS.

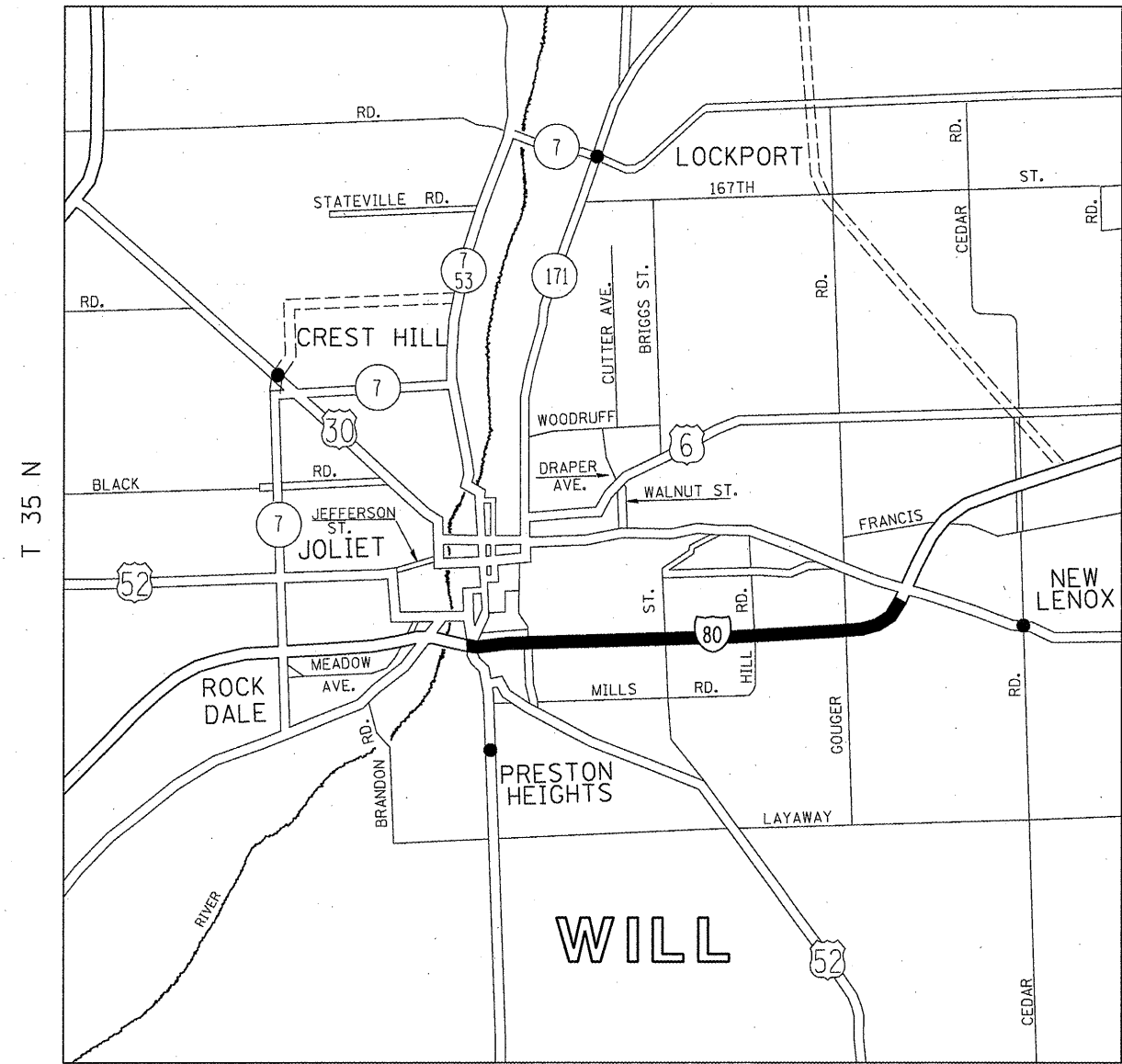
NO WORK IS TO BE DONE WITHIN 50 FEET OF THE EDGE OF ANY RAILROAD CROSSING.

| | | | | | | | | | | |
|---|------------------------|------------|---|---|---|-------------|---------|--------|--------------|-----------|
| FILE NAME = | USER NAME = wilgreendp | DESIGNED - | REVISED - | STATE OF ILLINOIS DEPARTMENT OF TRANSPORTATION | INDEX OF SHEETS, STATE STANDARDS AND GENERAL NOTES | F.A.I. RTE. | SECTION | COUNTY | TOTAL SHEETS | SHEET NO. |
| at\p\work\FW100T\WILGREENDP\08183629\Design.dgn | DRAWN - | REVISED - | 80 | | | 2009-113PP | WILL | 11 | 2 | |
| PLOT SCALE = 100.0000 ' / IN. | CHECKED - | REVISED - | CONTRACT NO. 60J28 | | | | | | | |
| PLOT DATE = 4/2/2010 | DATE - | REVISED - | FED. ROAD DIST. NO. 1 ILLINOIS FED. AID PROJECT | | | | | | | |
| SCALE: | | | | | | SHEET NO. | OF | SHEETS | STA. | TO STA. |

| SUMMARY OF QUANTITIES | | | | CONSTRUCTION TYPE CODE | | | | | SUMMARY OF QUANTITIES | | | | CONSTRUCTION TYPE CODE | | | | | |
|-----------------------|---|--------|------------------|------------------------|--|--|--|--|-----------------------|------|------|------------------|------------------------|--|--|--|--|--|
| CODE NO | ITEM | UNIT | TOTAL QUANTITIES | | | | | | CODE NO | ITEM | UNIT | TOTAL QUANTITIES | | | | | | |
| | | | 1000 | | | | | | | | | | | | | | | |
| 40600200 | BITUMINOUS MATERIALS (PRIME COAT) | TON | 6 | 6 | | | | | | | | | | | | | | |
| 40600300 | AGGREGATE (PRIME COAT) | TON | 27 | 27 | | | | | | | | | | | | | | |
| 40600400 | MIXTURE FOR CRACKS, JOINTS, AND FLANGWAYS | TON | 20 | 20 | | | | | | | | | | | | | | |
| 40600895 | CONSTRUCTING TEST STRIP | EACH | 1 | 1 | | | | | | | | | | | | | | |
| 40600982 | HOT-MIX ASPHALT SURFACE REMOVAL - BUTT JOINT | SO YD | 267 | 267 | | | | | | | | | | | | | | |
| 40603345 | HOT-MIX ASPHALT SURFACE COURSE, MIX "D", N90 | TON | 1492 | 1492 | | | | | | | | | | | | | | |
| 44000157 | HOT-MIX ASPHALT SURFACE REMOVAL, 2" | SO YD | 13320 | 13320 | | | | | | | | | | | | | | |
| 67000400 | ENGINEER'S FIELD OFFICE, TYPE A | CAL MO | 6 | 6 | | | | | | | | | | | | | | |
| 67100100 | MOBILIZATION | L SUM | 1 | 1 | | | | | | | | | | | | | | |
| 70106800 | CHANGEABLE MESSAGE SIGN | CAL MO | 1 | 1 | | | | | | | | | | | | | | |
| 70300530 | PAVEMENT MARKING TAPE, TYPE III 5" | FOOT | 2400 | 2400 | | | | | | | | | | | | | | |
| 70301000 | WORK ZONE PAVEMENT MARKING REMOVAL | SO FT | 1000 | 1000 | | | | | | | | | | | | | | |
| *78000200 | THERMOPLASTIC PAVEMENT MARKING - LINE 4" | FOOT | 9990 | 9990 | | | | | | | | | | | | | | |
| *78000500 | THERMOPLASTIC PAVEMENT MARKING - LINE 8" | FOOT | 310 | 310 | | | | | | | | | | | | | | |
| *78000600 | THERMOPLASTIC PAVEMENT MARKING - LINE 12" | FOOT | 200 | 200 | | | | | | | | | | | | | | |
| *78004220 | PREFORMED PLASTIC PAVEMENT MARKING, TYPE B - INLAID - LINE 5" | FOOT | 2400 | 2400 | | | | | | | | | | | | | | |
| *78100100 | RAISED REFLECTIVE PAVEMENT MARKER | EACH | 125 | 125 | | | | | | | | | | | | | | |
| 78300200 | RAISED REFLECTIVE PAVEMENT MARKER REMOVAL | EACH | 125 | 125 | | | | | | | | | | | | | | |
| X0325702 | NIGHTTIME WORK ZONE LIGHTING | L SUM | 1 | 1 | | | | | | | | | | | | | | |
| X7011015 | TRAFFIC CONTROL AND PROTECTION (EXPRESSWAYS) | L SUM | 1 | 1 | | | | | | | | | | | | | | |
| * SPECIALTY ITEM | | | | | | | | | | | | | | | | | | |

| | | | | | | | | | | | | | |
|--|-----------------------|------------|-----------|---|------------------------------|-----------|----|--------|-------------|------------|---|--------------|-----------|
| FILE NAME = | USER NAME = wlgreendp | DESIGNED - | REVISED - | STATE OF ILLINOIS DEPARTMENT OF TRANSPORTATION | SUMMARY OF QUANTITIES | | | | F.A.I. RTE. | SECTION | COUNTY | TOTAL SHEETS | SHEET NO. |
| c:\pwwork\pwwork\wlgreendp\d0183629\Design.dgn | | DRAWN - | REVISED - | | | | | | 80 | 2009-113PP | WILL | 11 | 3 |
| PLOT SCALE = 100,0000' / IN. | | CHECKED - | REVISED - | | CONTRACT NO. 60J28 | | | | | | | | |
| PLOT DATE = 3/26/2010 | | DATE - | REVISED - | | SCALE: | SHEET NO. | OF | SHEETS | STA. | TO STA. | FED. ROAD DIST. NO. 1 ILLINOIS FED. AID PROJECT | | |

R 10 E | R 11 E



T 35 N

JOLIET TOWNSHIP | NEW LENOX TOWNSHIP

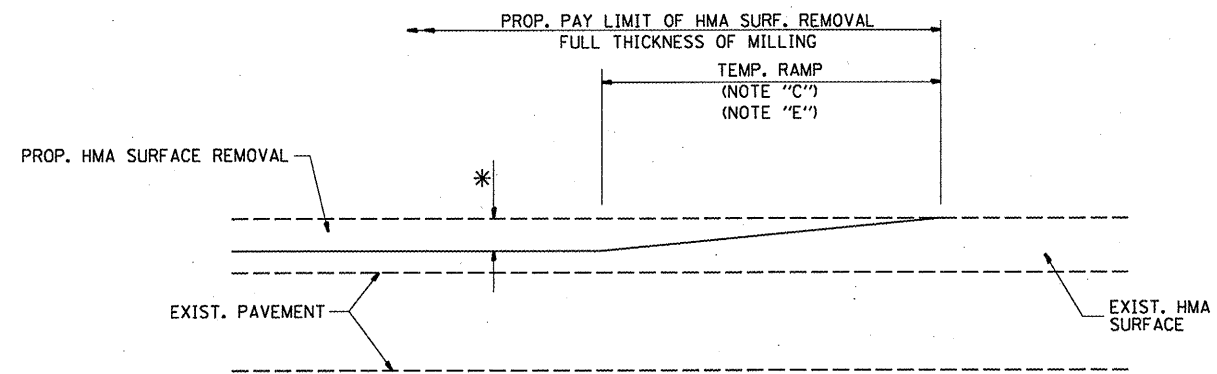
WILL

| | | | |
|--|------------------------|------------|-----------|
| FILE NAME = | USER NAME = wilgreendp | DESIGNED - | REVISED - |
| ct:\pwork\FWIDOT\WILGREENDP\0183629\design.dgn | | DRAWN - | REVISED - |
| | | CHECKED - | REVISED - |
| | | DATE - | REVISED - |
| | | | |

**STATE OF ILLINOIS
DEPARTMENT OF TRANSPORTATION**

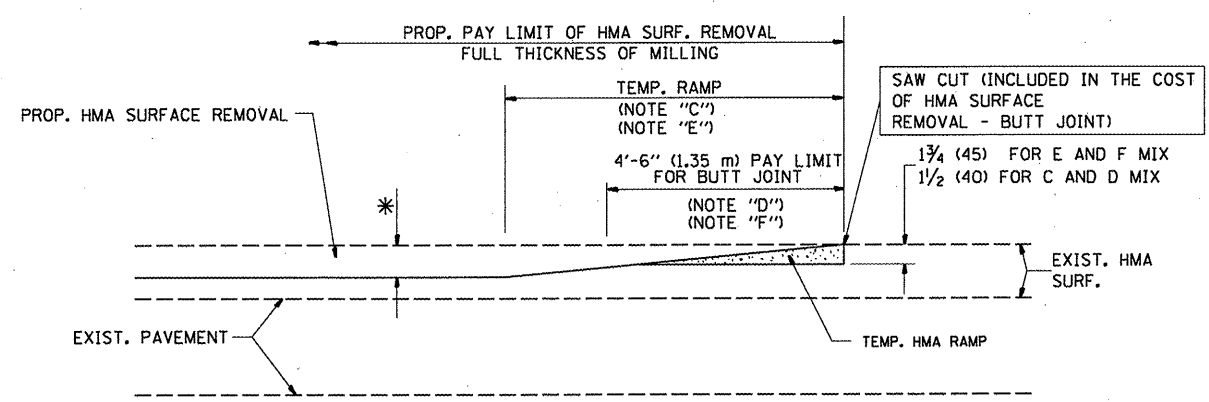
| | | | |
|---------------------|-----------|----|--------|
| LOCATION MAP | | | |
| SCALE: | SHEET NO. | OF | SHEETS |
| | STA. | TO | STA. |

| | | | | |
|---|------------|--------|--------------|-----------|
| F.A.I. RTE. | SECTION | COUNTY | TOTAL SHEETS | SHEET NO. |
| VAR. | 2009-113PP | WILL | 11 | 4 |
| CONTRACT NO. 60J28 | | | | |
| FED. ROAD DIST. NO. 1 ILLINOIS FED. AID PROJECT | | | | |



MILLED TEMPORARY RAMP
(FOR BUTT JOINT AND HMA TAPER SEE DETAIL BELOW)

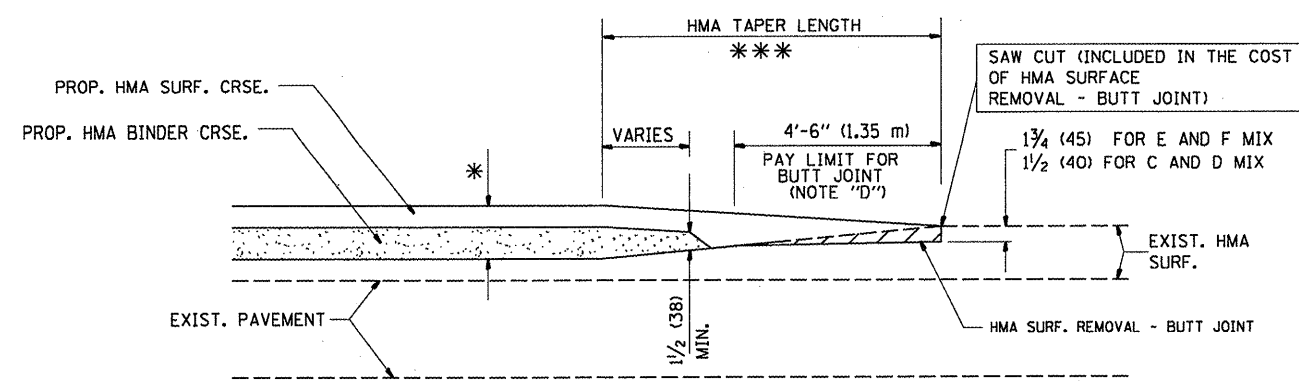
OPTION 1



HMA CONSTRUCTED TEMPORARY RAMP
(FOR BUTT JOINT AND HMA TAPER SEE DETAIL BELOW)

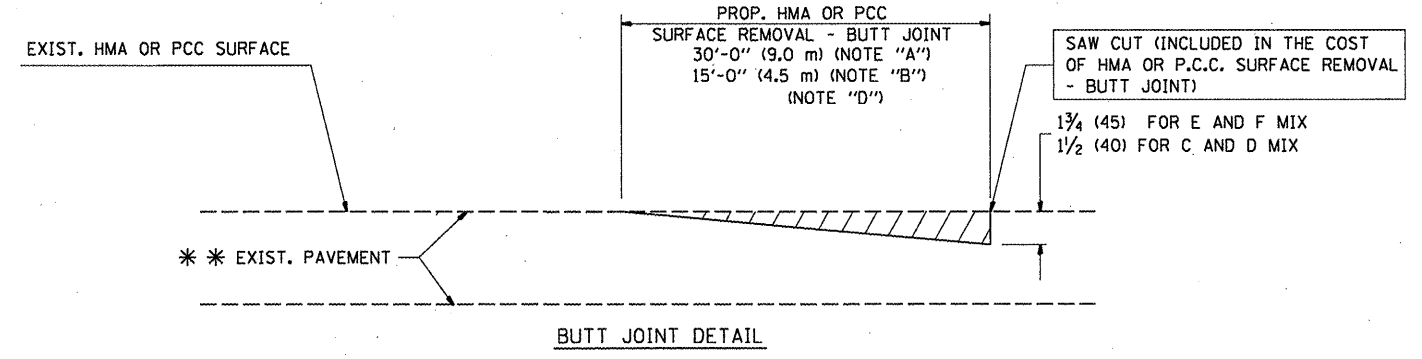
OPTION 2

TYPICAL TEMPORARY RAMP

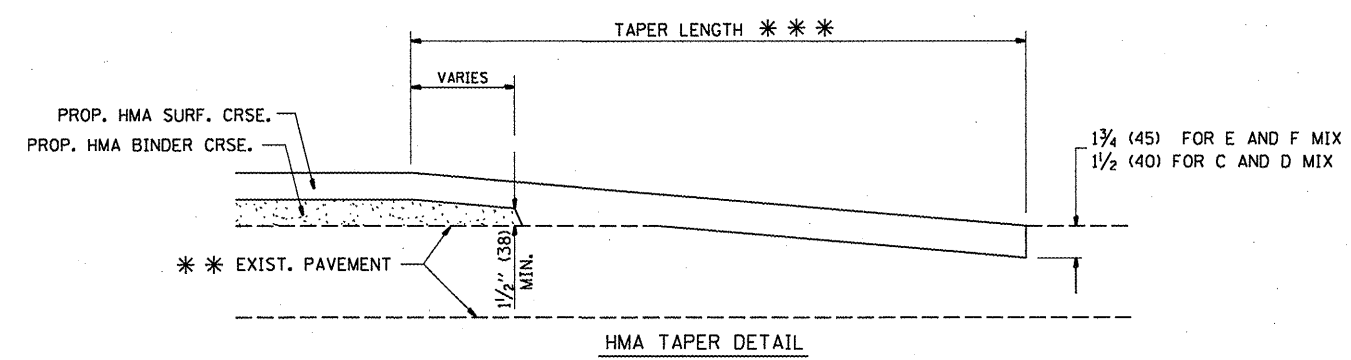


BUTT JOINT AND
HMA TAPER

**TYPICAL BUTT JOINT AND HMA TAPER
FOR MILLING AND RESURFACING**



BUTT JOINT DETAIL



HMA TAPER DETAIL

**TYPICAL BUTT JOINT AND HMA TAPER
FOR RESURFACING ONLY**

*** PC CONCRETE, HMA OR HMA RESURFACED PAVEMENT.

NOTES

- A: MAINLINE ROADWAYS AND MAJOR SIDE ROADS.
 - B: MINOR SIDE ROADS.
 - C: THE TEMP. RAMP SHALL BE CONSTRUCTED IMMEDIATELY UPON REMOVAL OF THE EXISTING HMA SURFACE.
 - D: THE BUTT JOINT SHALL BE CONSTRUCTED IMMEDIATELY PRIOR TO PLACING THE PROPOSED HMA COURSES.
 - E: TAPER THE TEMP. RAMP AT A RATE OF 3'-0" (900 mm) PER 1 INCH (25 mm) OF MILLING THICKNESS.
 - F: INSTALLATION AND REMOVAL OF THE 4'-6" (1.35 m) TEMP. RAMP IS INCLUDED IN COST OF HMA SURFACE REMOVAL - BUTT JOINT
 - G: SEE ARTICLE 406.08 AND 406.14 OF THE STANDARD SPECIFICATIONS FOR "HMA AND/OR PCC SURFACE REMOVAL, BUTT JOINT".
- * SEE TYPICAL SECTIONS FOR MILLING THICKNESS.
- *** 20'-0" (6.1 m) PER 1 (25) RESURFACING (NOTE "A")
10'-0" (3.0 m) PER 1 (25) RESURFACING (NOTE "B")

BASIS OF PAYMENT:

THE BUTT JOINT WILL BE PAID FOR AT THE CONTRACT UNIT PRICE PER SQUARE YARD (SQUARE METER) FOR "HOT-MIX ASPHALT SURFACE REMOVAL - BUTT JOINT" OR FOR "PORTLAND CEMENT CONCRETE SURFACE REMOVAL - BUTT JOINT".

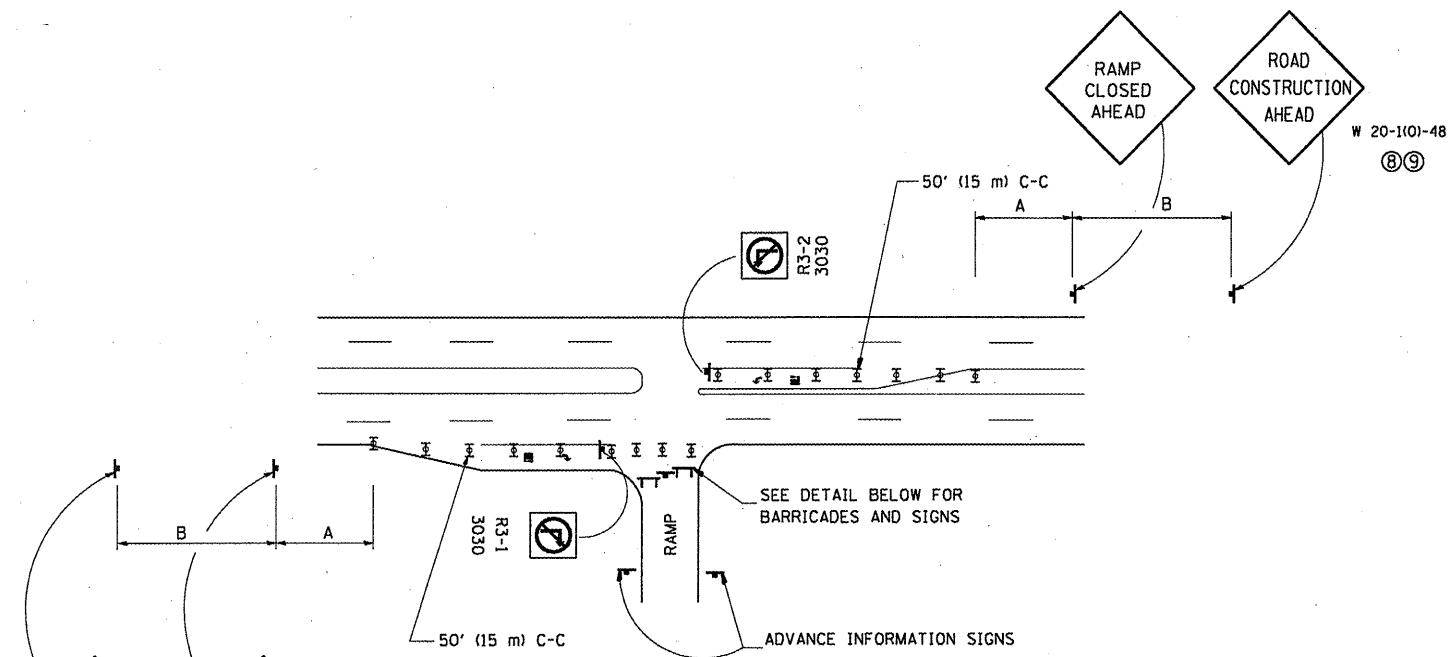
ALL DIMENSIONS ARE IN INCHES (MILLIMETERS) UNLESS OTHERWISE SHOWN.

| | | | |
|--|-----------------------|-----------------------|-----------------------------|
| FILE NAME = | USER NAME = wlgreendp | DESIGNED - M. DE YONG | REVISED - R. SHAH 10-25-94 |
| ct:\pw_work\p\10107\WILGREENDP\0183629\01std.dgn | | DRAWN - | REVISED - A. ABBAS 03-21-97 |
| PLOT SCALE = 100.0000' / IN. | | CHECKED - | REVISED - M. GOMEZ 04-06-01 |
| PLOT DATE = 3/26/2010 | | DATE - 06-13-90 | REVISED - R. BORO 01-01-07 |

**STATE OF ILLINOIS
DEPARTMENT OF TRANSPORTATION**

| | | | |
|---|-------------------------|------|---------|
| BUTT JOINT AND HMA TAPER DETAILS | | | |
| SCALE: NONE | SHEET NO. 1 OF 1 SHEETS | STA. | TO STA. |

| | | | | |
|---|--------------------|--------------------|-----------------|-------------|
| F.A.I. RTE. 80 | SECTION 2009-113PP | COUNTY WILL | TOTAL SHEETS 11 | SHEET NO. 6 |
| BD400-05 BD32 | | CONTRACT NO. 60J28 | | |
| FED. ROAD DIST. NO. 1 ILLINOIS FED. AID PROJECT | | | | |

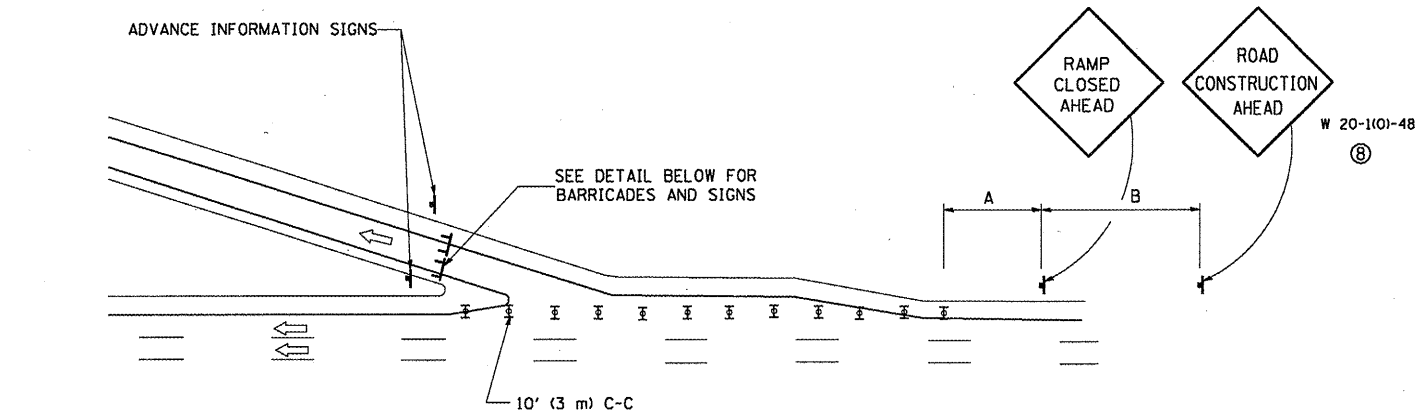


ENTRANCE RAMP CLOSURE

SIGN SPACING TABLE

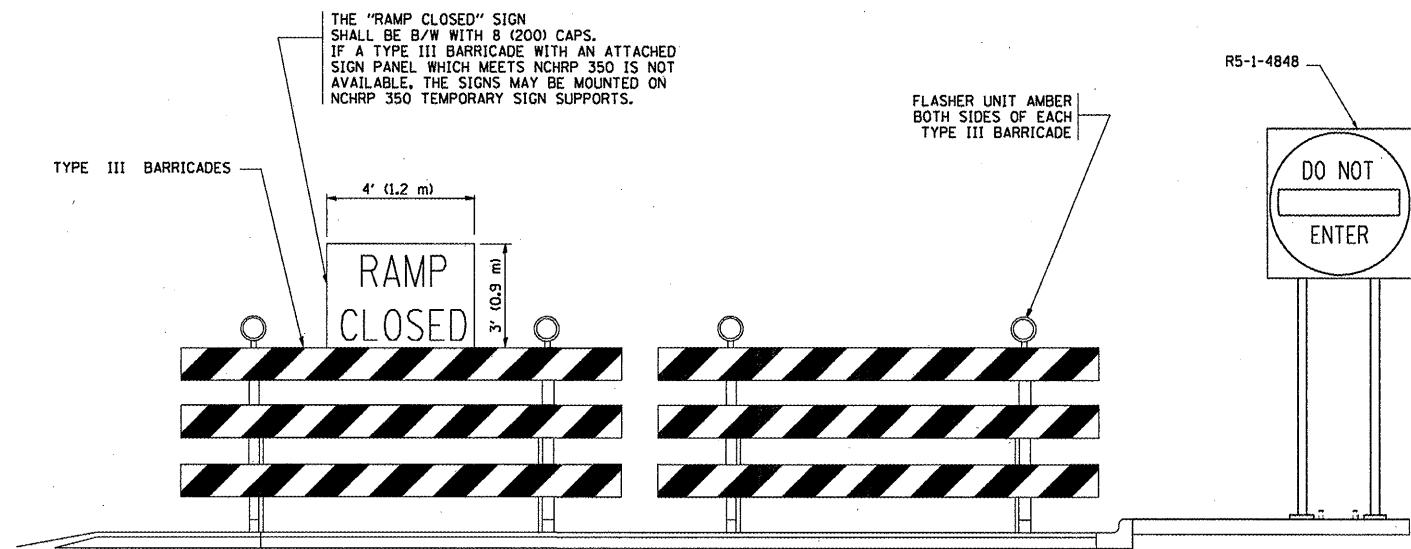
| FACILITY | DISTANCE BETWEEN SIGNS | |
|----------------------|------------------------|---------------|
| | A | B |
| EXPRESSWAY >24 HOURS | 1000' (300 m) | 1500' (450 m) |
| EXPRESSWAY <24 HOURS | 500' (150 m) | 500' (150 m) |
| ARTERIAL >45 MPH | 350' (100 m) | 350' (100 m) |
| ARTERIAL <45 MPH | 150' (45 m) | 150' (45 m) |

DISTANCES MAY BE SHORTENED DEPENDING UPON THE PROXIMITY OF ADJACENT RAMPS OR INTERSECTIONS.

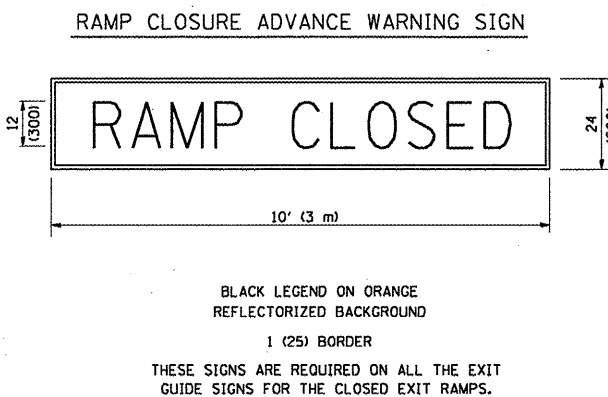


EXIT RAMP CLOSURE

- SYMBOLS**
- ☒ TYPE II BARRICADE, DRUM OR VERTICAL BARRICADE WITH STEADY BURN MONO-DIRECTIONAL LIGHT
 - ☒ TYPE III BARRICADE WITH FLASHING LIGHT

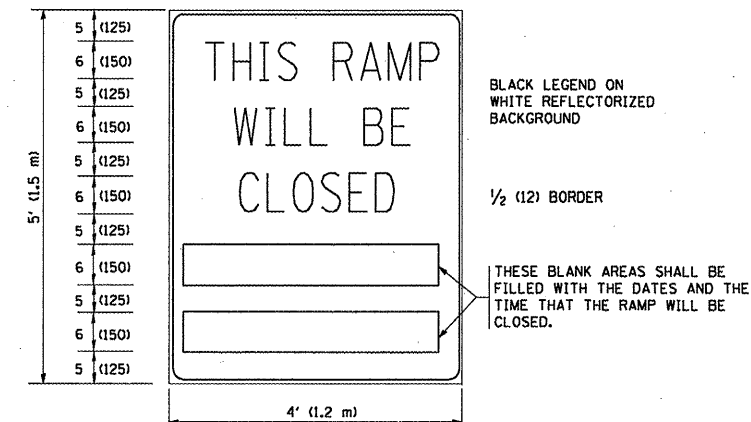


DETAIL FOR REQUIRED BARRICADES & SIGNS



BLACK LEGEND ON ORANGE REFLECTORIZED BACKGROUND
1 (25) BORDER
THESE SIGNS ARE REQUIRED ON ALL THE EXIT GUIDE SIGNS FOR THE CLOSED EXIT RAMPS.

RAMP CLOSURE ADVANCE INFORMATION SIGN



THESE SIGNS ARE REQUIRED ON BOTH SIDES OF THE RAMP, MINIMUM OF 1 WEEK IN ADVANCE OF THE CLOSURE.

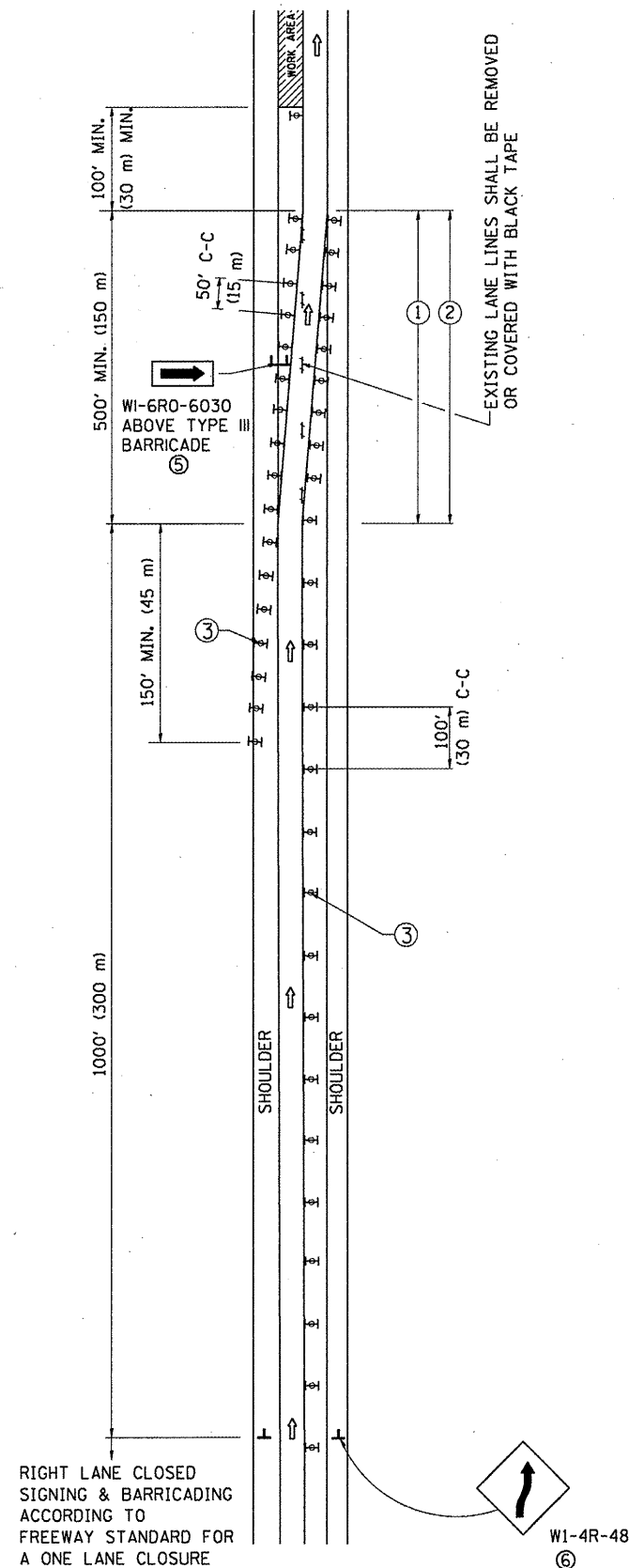
GENERAL NOTES:

- CONES MAY BE SUBSTITUTED FOR DRUMS OR TYPE II BARRICADES DURING DAY OPERATIONS. CONES SHALL BE A MINIMUM OF 28 (700) HIGH.
- STEADY BURN LIGHTS WILL NOT BE REQUIRED FOR DAY OPERATIONS.
- A FLAGGER SHALL BE POSITIONED AT EACH CLOSED RAMP THAT IS OPEN TO CONSTRUCTION VEHICLES.
- ALL ROUTE MARKERS AND TRAILBLAZER ASSEMBLIES WHICH DIRECT MOTORISTS TO A CLOSED ENTRANCE RAMP SHALL BE COVERED.
- THE SIGNING AND BARRICADING WHICH IS REQUIRED BY THIS DETAIL SHALL BE INCLUDED IN THE COST OF TRAFFIC CONTROL AND PROTECTION (EXPRESSWAYS).
- AUTHORIZATION FROM THE DISTRICT'S BUREAU OF TRAFFIC IS REQUIRED FOR ALL RAMP CLOSURES.
- THE RAMP CLOSURE ADVANCE INFORMATION SIGNS SHALL BE ERECTED IF THE CLOSURE TIME EXCEEDS TWENTY-FOUR (24) HOURS. ADDITIONAL ADVANCE WARNING SIGNS ON EXIT GUIDE SIGNING WILL BE REQUIRED FOR EXIT RAMP CLOSURES THAT EXCEED TWENTY-FOUR (24) HOURS IN LENGTH.
- ROAD CONSTRUCTION AHEAD SIGNS MAY BE OMITTED WHEN THIS DETAIL IS USED IN CONJUNCTION WITH OTHER TRAFFIC CONTROL THAT ALREADY INCLUDES A ROAD CONSTRUCTION AHEAD SIGN.
- ARTERIAL ROAD CONSTRUCTION AHEAD SIGNS MAY BE OMITTED ON CLOSURES LESS THAN 24 HOURS IN DURATION.

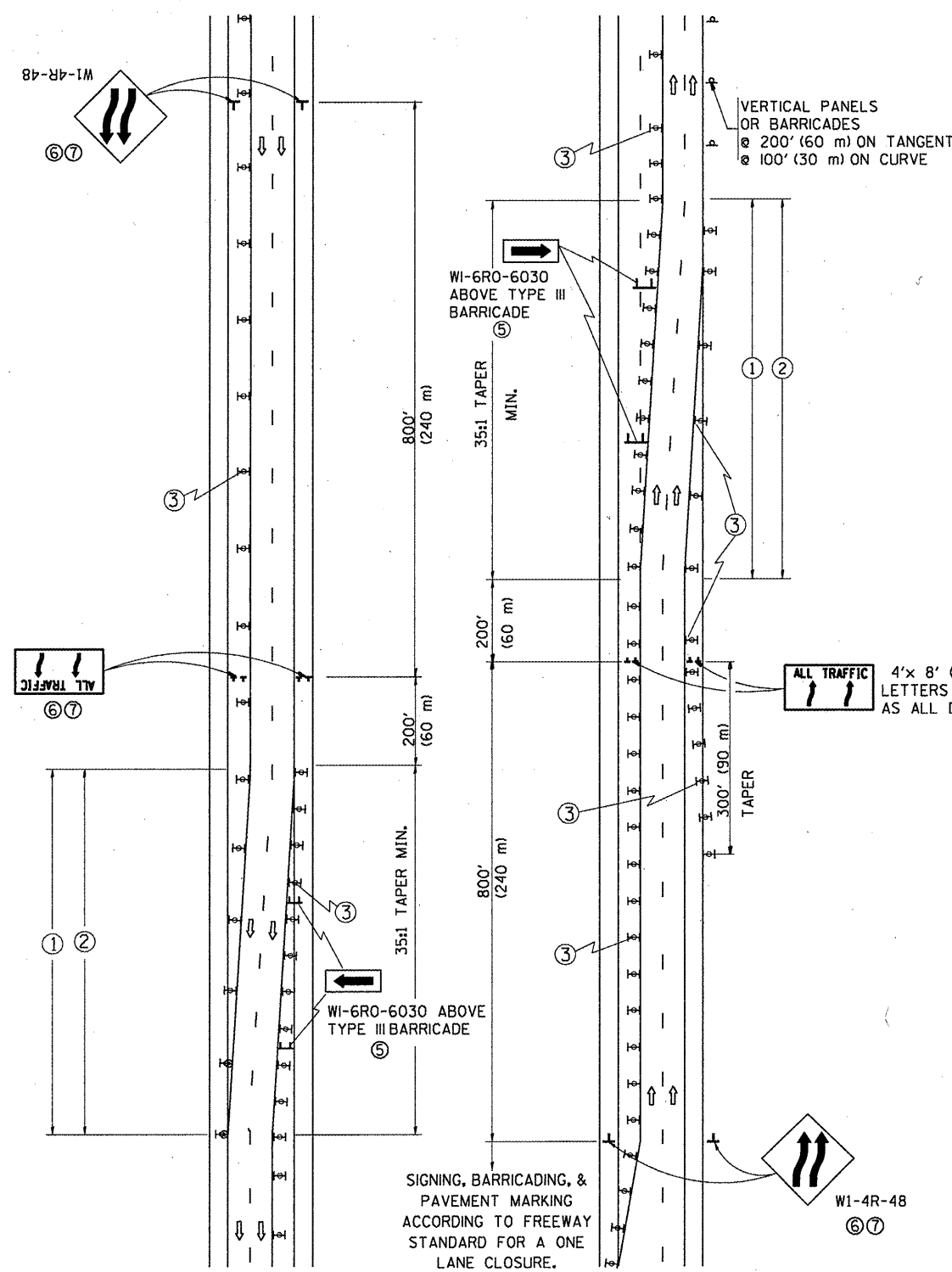
ALL DIMENSIONS ARE IN INCHES (MILLIMETERS) UNLESS OTHERWISE SHOWN.

| | | | | | | | | | | | |
|---|-----------------------|----------------|-------------------------|---|---|-------------------------|---------------------------|---|--------|--------------|-----------|
| FILE NAME = | USER NAME = wlgreendp | DESIGNED - DWS | REVISED - DWS/JAF 12-02 | STATE OF ILLINOIS DEPARTMENT OF TRANSPORTATION | FREWAY ENTRANCE AND EXIST RAMP CLOSURE DETAILS | | F.A.I. RTE. | SECTION | COUNTY | TOTAL SHEETS | SHEET NO. |
| at:\pwork\PM1007\WILGREENOP\0183629\0183629.dgn | | DRAWN - | REVISED - JAF 02-06 | | 80 | 2009-113PP | WILL | 11 | 7 | | |
| PLOT SCALE = 1/8" = 1'-0" | | CHECKED - | REVISED - SPB 01-07 | | TC-08 | | CONTRACT NO. 60J28 | | | | |
| PLOT DATE = 3/26/2010 | | DATE - 02-83 | REVISED - SPB 12-09 | | SCALE: NONE | SHEET NO. 1 OF 1 SHEETS | STA. TO STA. | FED. ROAD DIST. NO. 1 ILLINOIS FED. AID PROJECT | | | |

SINGLE LANE WEAVE



MULTI-LANE WEAVE



GENERAL NOTES

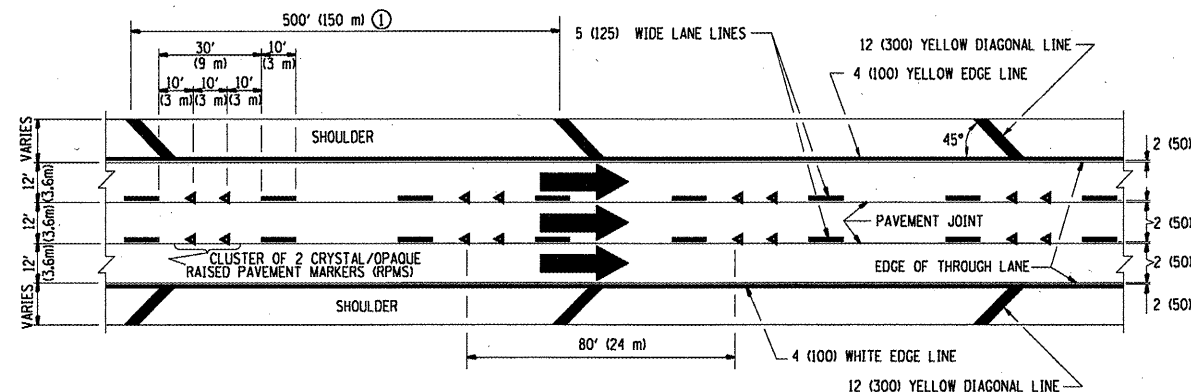
- ① EXISTING CONFLICTING PAVEMENT MARKING LINES SHALL BE REMOVED. PAVEMENT MARKING REMOVAL SHALL NOT BE REQUIRED FOR SINGLE LANE WEAVES UNDER 24 HOURS IN DURATION.
- ② CONTINUOUS REFLECTIVE TEMPORARY PAVEMENT MARKING TAPE SHALL BE PLACED THROUGHOUT THE TAPER AND FOR 300' (90 m) ALONG SIDE THE WORK AREA WHERE THE CLOSURE TIME IS GREATER THAN FOURTEEN DAYS. THE LEFT EDGE LINE SHALL BE YELLOW AND THE RIGHT EDGE LINE SHALL BE WHITE. FOR MULTI-LANE WEAVES LANE LINES SHALL BE 5 INCH, 10'-30' (3 m-9 m) SKIP DASH, WHITE.
- ③ PLASTIC DRUMS WITH STEADY BURN LIGHTS AT 50' (15 m) C-C SPACING IN TAPERS AND 100' (30 m) C-C SPACING IN TANGENTS.
- ④ ALL SIGNS SHALL BE POST MOUNTED IF THE CLOSURE TIME EXCEEDS FOUR DAYS.
- ⑤ IF A TYPE III BARRICADE WITH AN ATTACHED SIGN PANEL WHICH MEETS NCHRP 350 IS NOT AVAILABLE, THE SIGNS MAY BE MOUNTED ON NCHRP 350 TEMPORARY SIGN SUPPORTS. TYPE III BARRICADES MAY BE OMITTED FOR SINGLE-LANE WEAVES UNDER 24-HOURS IN DURATION. W1-6 SIGNS WILL STILL BE REQUIRED. IF THE WIDTH OF OFFSET IS LESS THAN 6' THEN THE TYPE III BARRICADE WITH ATTACHED ARROW SIGN PANEL CAN BE ELIMINATED IN THE TAPER AREAS.
- ⑥ WHEN THE LENGTH OF THE SHIFTED SEGMENT (DISTANCE BETWEEN WEAVE POINTS) IS LESS THAN 1500', DOUBLE REVERSE CURVE SIGNS (W24-1) SHOULD BE USED INSTEAD OF THE REVERSE CURVE (W1-4) SIGNS. ARROWS ON THE 4'X8' "ALL TRAFFIC" SIGNS SHALL BE THE SAME SHAPE.
- ⑦ THE NUMBER OF ARROWS ON THESE SIGNS SHALL MATCH THE NUMBER OF LANES OPEN TO TRAFFIC.

SYMBOLS

- DIRECTION OF TRAFFIC
- WORK AREA
- SIGN ON PORTABLE OR PERMANENT SUPPORT
- TYPE II BARRICADE OR DRUM WITH MONO-DIRECTIONAL STEADY BURNING LIGHT

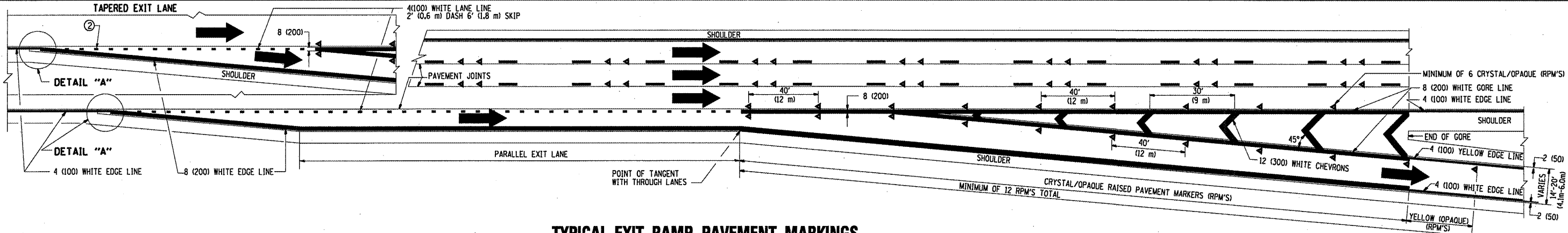
ALL DIMENSIONS ARE IN INCHES (MILLIMETERS) UNLESS OTHERWISE SHOWN

| | | | | | | | | | | | | |
|--|-----------------------|---------------------|---------------------|---|--|------------|---------|---|--------------------|--------|--------------|-----------|
| FILE NAME = | USER NAME = wlgreendp | DESIGNED - DWS | REVISED - JAF 01-03 | STATE OF ILLINOIS DEPARTMENT OF TRANSPORTATION | TRAFFIC CONTROL DETAILS FOR FREEWAY SINGLE & MULTI-LANE WEAVE | | | F.A.I. RTE. | SECTION | COUNTY | TOTAL SHEETS | SHEET NO. |
| 01\pwork\PW1001\WILGREENDP\0183629\0183629.dgn | 0183629.dgn | DRAWN - | REVISED - JAF 02-06 | | 80 | 2009-113PP | WILL | 11 | 8 | | | |
| PLOT SCALE = 100.0000 "/> IN. | CHECKED - | REVISOR - SPB 01-07 | REVISED - SPB 12-09 | | TC-09 | | | | CONTRACT NO. 60J28 | | | |
| PLOT DATE = 3/26/2010 | DATE - 02-87 | REVISED - SPB 12-09 | SCALE: NONE | | SHEET NO. 1 OF 1 SHEETS | STA. | TO STA. | FED. ROAD DIST. NO. 1 (ILLINOIS) FED. AID PROJECT | | | | |

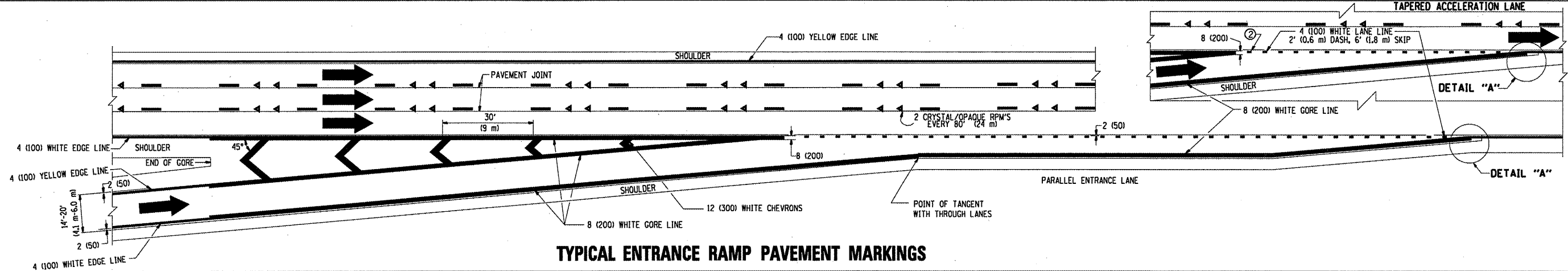


TYPICAL EDGE LINES & LANE LINES

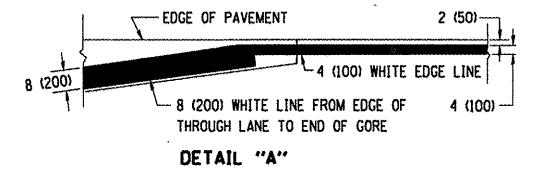
- PAVEMENT MARKING MATERIALS**
1. THERMO PLASTIC PAVEMENT MARKING LINE SHALL BE USED FOR THE EDGE LINES, GORE LINES, AND DIAGONAL LINES ON BITUMINOUS PAVEMENT ONLY.
 2. PREFORMED PLASTIC TYPE B PAVEMENT MARKING LINE SHALL BE USED FOR ALL LANE LINES ON BITUMINOUS PAVEMENT.
 3. POLYUREA PAVEMENT MARKING SHALL BE USED FOR ALL MARKINGS ON PCC.



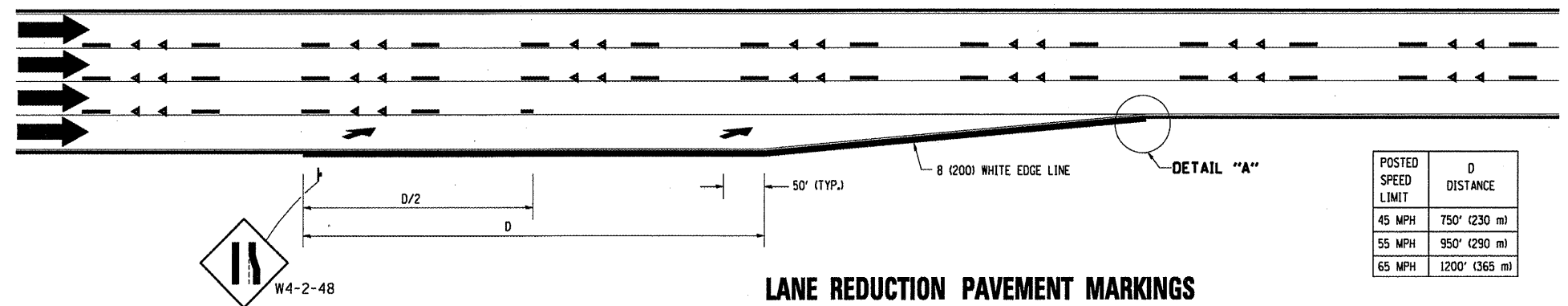
TYPICAL EXIT RAMP PAVEMENT MARKINGS



TYPICAL ENTRANCE RAMP PAVEMENT MARKINGS

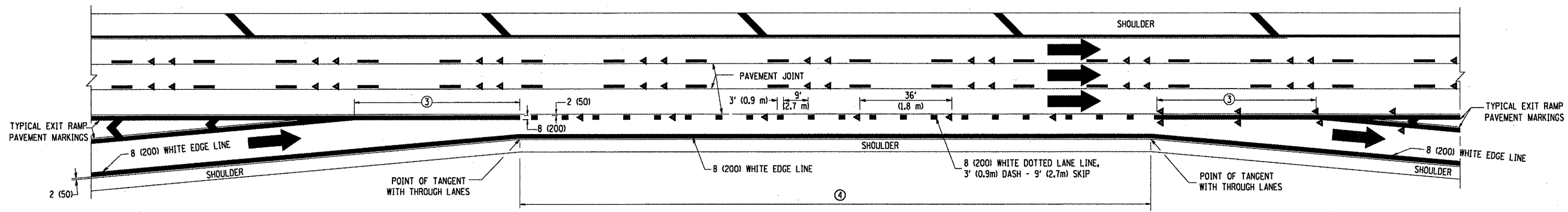


- NOTES:**
- ① THE DIAGONAL LINES SHALL BE SPACED AT 40' (12 m) C-C ACROSS ALL STRUCTURES WHICH ARE 500' (150 m) OR LESS IN LENGTH. THE DIAGONAL LINES ARE NOT REQUIRED ON SHOULDERS WHICH ARE 6' (1.8 m) OR LESS IN WIDTH.
 - ② 4" (2' DASH, 6' SKIP) MARKING ON TAPERED ENTRANCE AND EXIT RAMP SHALL BE OMITTED ON TANGENT SECTIONS.

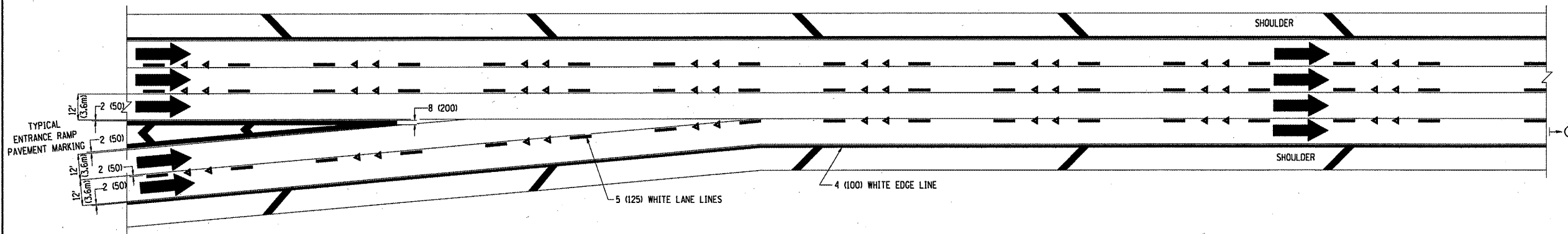


LANE REDUCTION PAVEMENT MARKINGS

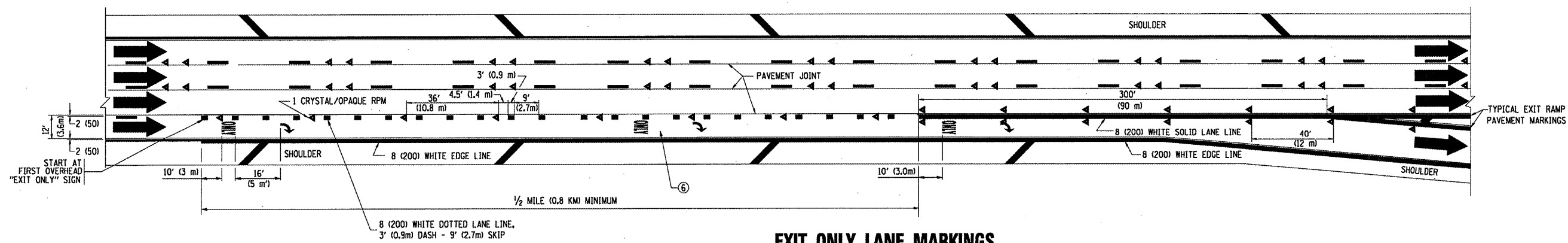
| POSTED SPEED LIMIT | D DISTANCE |
|--------------------|---------------|
| 45 MPH | 750' (230 m) |
| 55 MPH | 950' (290 m) |
| 65 MPH | 1200' (365 m) |



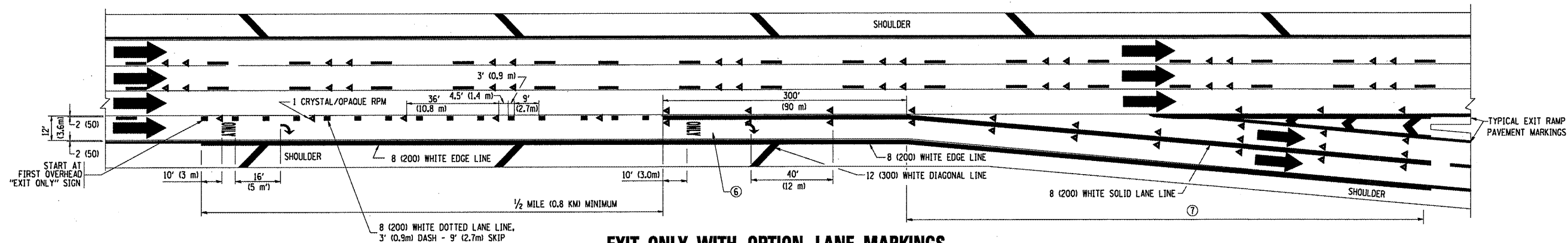
AUXILIARY LANE MARKINGS



TWO LANE ENTRANCE RAMP WITH MERGE MARKINGS



EXIT ONLY LANE MARKINGS

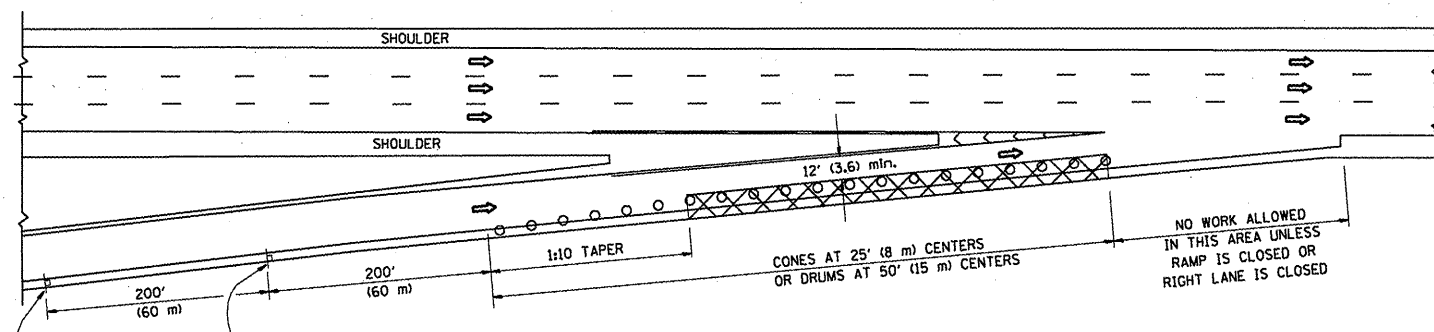


EXIT ONLY WITH OPTION LANE MARKINGS

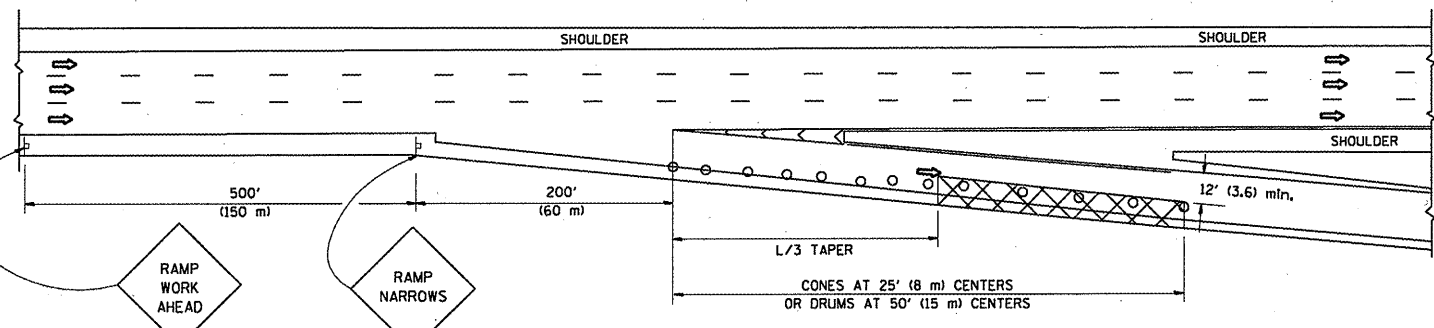
- NOTES**
- ③ OMIT WHEN LENGTH OF AUXILIARY LANE IS LESS THAN 500' (150 m).
 - ④ 8-INCH WIDE DOTTED LANE LINE MARKINGS SHALL BE USED WHEN THE LENGTH OF THE AUXILIARY LANE IS 2 MILES OR LESS.
 - ⑤ FOR TWO-LANE ENTRANCE RAMP, IF RIGHT LANE ENDS, USE TYPICAL ENTRANCE RAMP PAVEMENT MARKINGS.
 - ⑥ ONLY ARROWS EQUALLY SPACED, 500' (150 m) MAXIMUM SPACING. FULL SIZE LETTERS AND ARROW SHALL BE USED.
 - ⑦ CONTINUE 8" SOLID LANE LINE THROUGH EXIT TO END OF PAVED GORE.

| | | | | | | | | | | | | |
|--|-----------------------|-------------------|------------------------|---|--|-------------------------|--------------|---------------------------------|--------------------|-------------|-----------------|--------------|
| FILE NAME = | USER NAME = wlgreendp | DESIGNED - D.W.S. | REVISED - D.W.S. 07-96 | STATE OF ILLINOIS DEPARTMENT OF TRANSPORTATION | MULTI-LANE FREEWAY PAVEMENT MARKING DETAILS | | | F.A.I. RTE. 80 | SECTION 2009-113PP | COUNTY WILL | TOTAL SHEETS 11 | SHEET NO. 10 |
| cd:\pw\work\p\1001\WILGREENDP\d8183629\1001\1001.dgn | | DRAWN - | REVISED - J.A.F. 02-06 | | SCALE: NONE | SHEET NO. 2 OF 2 SHEETS | STA. TO STA. | TC-12 CONTRACT NO. 60J28 | | | | |
| | | CHECKED - | REVISED - S.P.B. 01-07 | | FED. ROAD DIST. NO. 1 (ILLINOIS) FED. AID PROJECT | | | | | | | |
| | | DATE - 01-90 | REVISED - S.P.B. 01-10 | | | | | | | | | |

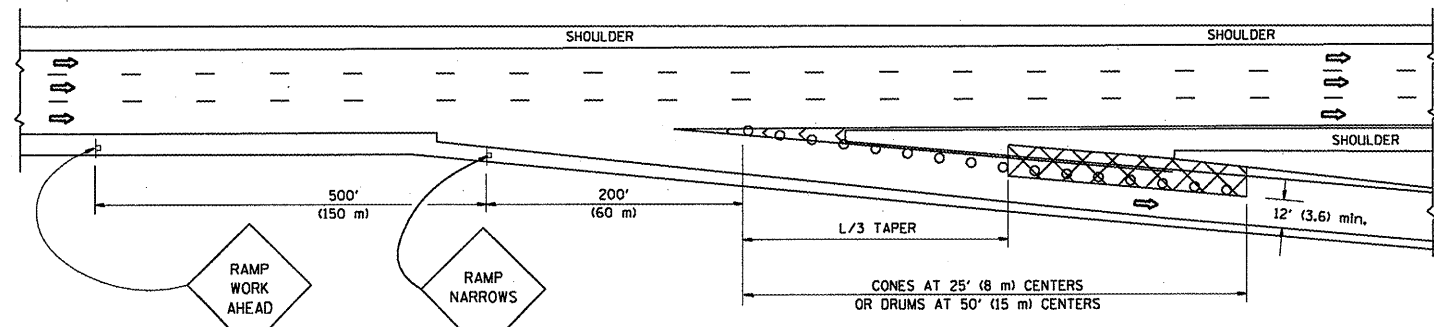
PARTIAL RAMP CLOSURE DETAILS



TYPICAL ENTRANCE RAMP



TYPICAL EXIT RAMP



TYPICAL EXIT RAMP

SYMBOLS

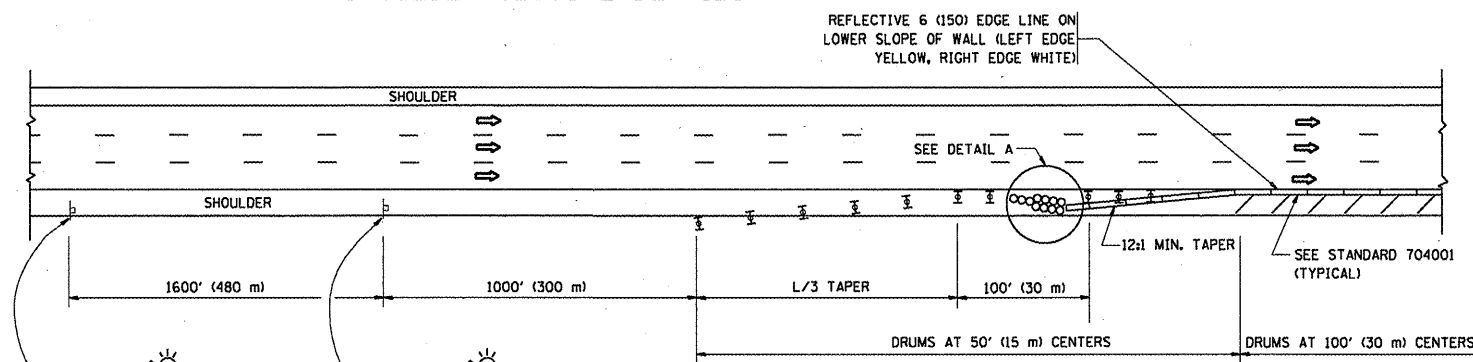
- ACTIVE WORK AREA
- SIGN ON PORTABLE OR PERMANENT SUPPORT
- FLAGGER WITH CONTROL SIGN
- TYPE II BARRICADE, DRUM OR VERTICAL BARRICADE WITH STEADY BURN MONO-DIRECTIONAL LIGHT
- CONE, DRUM OR BARRICADE

GENERAL NOTES

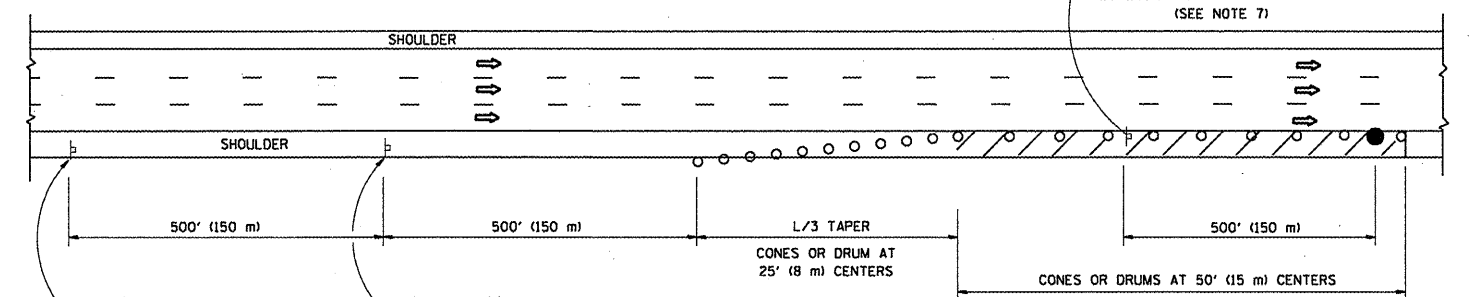
1. THE "L" DISTANCE EQUALS:

| | |
|------------------------------|--|
| SPEED LIMIT | FORMULAS |
| 45 mph (80 km/h) OR GREATER: | METRIC: $L=0.65(WKS)$ ENGLISH: $L=(WKS)$ |
| | W = WIDTH OF OFFSET IN FEET (METERS) |
| | S = NORMAL POSTED SPEED MPH (KM/H) |
2. PLASTIC DRUMS WITH HIGH PERFORMANCE REFLECTIVE SHEETING AND STEADY BURNING LIGHTS ARE REQUIRED FOR ALL NIGHTTIME CLOSURES.
3. ALL SIGNS SHALL BE POST MOUNTED IF THE CLOSURE TIME EXCEEDS FOUR DAYS.
4. FLASHING LIGHTS SHALL BE USED DURING THE HOURS OF DARKNESS AND SHALL BE INSTALLED ABOVE THE FIRST TWO SETS OF SIGNS.

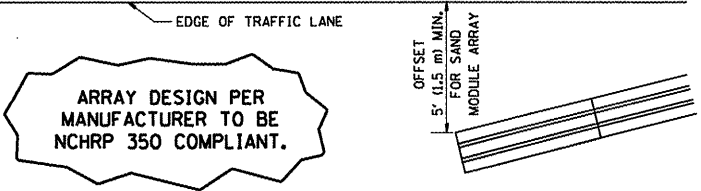
SHOULDER CLOSURE DETAILS



PERMANENT SHOULDER CLOSURE



DAYTIME SHOULDER CLOSURE



DETAIL "A" IMPACT ATTENUATOR, TEMPORARY (SEE NOTE 5)

5. THE IMPACT ATTENUATOR, TEMPORARY IS NOT REQUIRED WHEN THE TEMPORARY CONCRETE BARRIER WALL IS PROTECTED BY OR IS TIED INTO THE EXISTING GUARDRAIL. IF OFFSET IS LESS THAN 5 FEET USE NARROW USE TYPE DEVICE TO MEET NCHRP350.
6. AUTHORIZATION FROM THE DISTRICT'S BUREAU OF TRAFFIC IS REQUIRED FOR ALL FREEWAY CLOSURES.
7. THE FLAGGER AND FLAGGER SIGN ARE REQUIRED AT THE ABOVE WORK SITES WHEN:
 - a. FOUR OR MORE WORK VEHICLES ENTER THE TRAFFIC LANES IN A ONE HOUR PERIOD.
 - b. THE WORK AVTIVITY REQUIRES FREQUENT ENCR OACHMENT INTO THE LANE OPEN TO TRAFFIC.
 THE FLAGGER SHALL BE STATIONED APPROXIMATELY 100' (30 m) TO 200' (60 m) IN ADVANCE OF THE WORKERS.

ALL DIMENSIONS ARE IN INCHES (MILLIMETERS) UNLESS OTHERWISE SHOWN.

| | | | | | | | | | | | |
|---|-----------------------|----------------|------------------------|---|--|---|------------|--------------|--------------|-----------|--|
| FILE NAME = | USER NAME = wjgreendp | DESIGNED - | REVISED - 04-03 | STATE OF ILLINOIS DEPARTMENT OF TRANSPORTATION | TRAFFIC CONTROL DETAILS FOR FREEWAY SHOULDER CLOSURES AND PARTIAL RAMP CLOSURES | F.A.I. RTE. | SECTION | COUNTY | TOTAL SHEETS | SHEET NO. | |
| at\p\work\PW1001\WJLGREENDP\0183629\d\stStd.dgn | atStd.dgn | DRAWN - D.W.S. | REVISED - J.A.F. 12-06 | | | 80 | 2009-113PP | WILL | 11 | 11 | |
| PLOT SCALE = 1/8" = 1'-0" | | CHECKED - | REVISED - S.P.B. 01-07 | | | TC-17 CONTRACT NO. 60J28 | | | | | |
| PLOT DATE = 3/26/2010 | | DATE - 11-96 | REVISED - S.P.B. 12-09 | | | FED. ROAD DIST. NO. 1 (ILLINOIS) FED. AID PROJECT | | | | | |
| | | | | SCALE: NONE | | SHEET NO. 1 OF 1 SHEETS | | STA. TO STA. | | | |