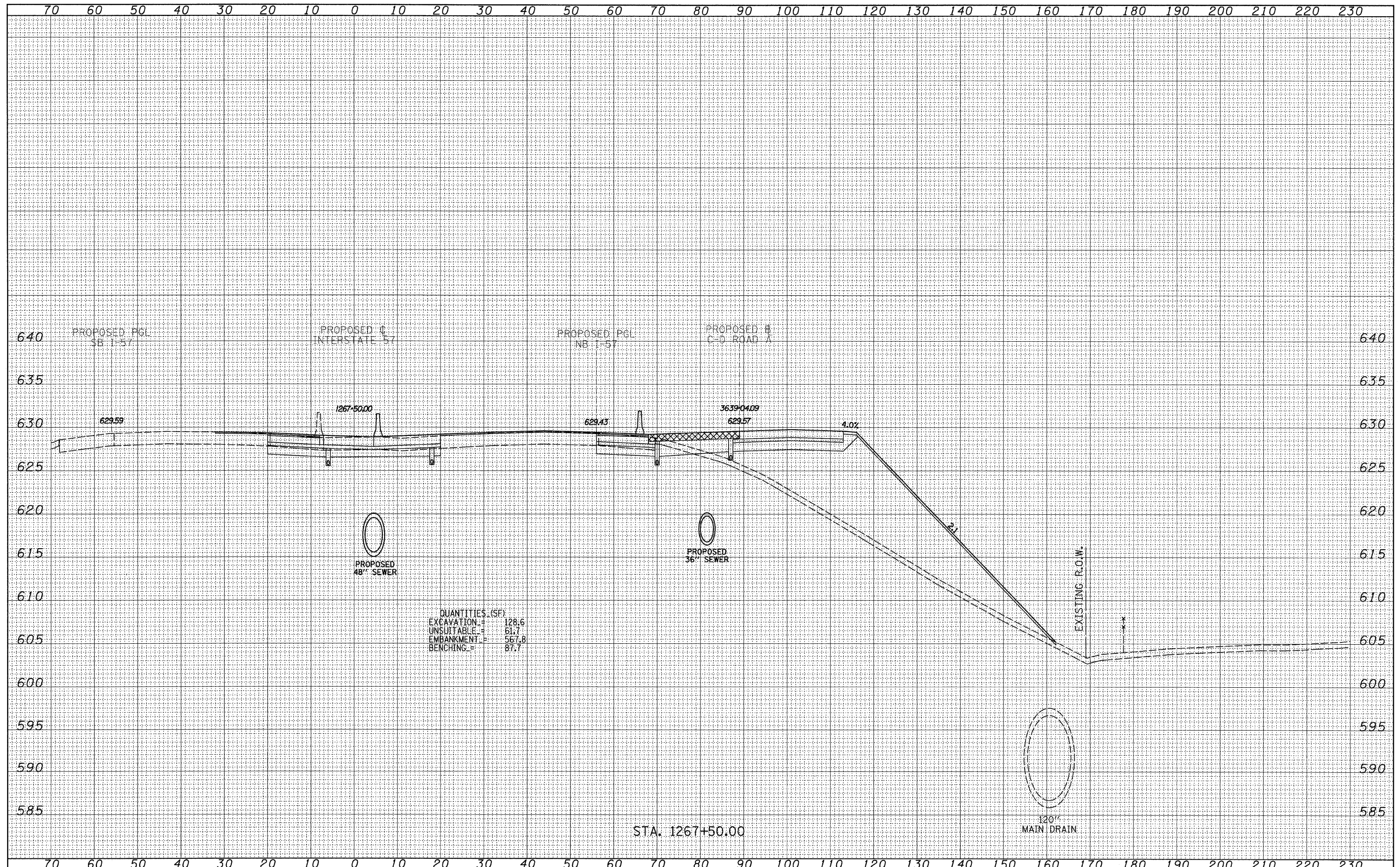


DATE	
BY	
SURVEYED	
PLOTTED	
NOTE BOOK	
AREAS CHECKED	
NO.	

DATE	
BY	
SURVEYED	
PLOTTED	
NOTE BOOK	
AREAS CHECKED	
NO.	



STA. 1267+50.00

120" MAIN DRAIN

TYLIN INTERNATIONAL USER NAME = PLOT SCALE = PLOT DATE =	DESIGNED - JDF	REVISED - 4/29/2010	STATE OF ILLINOIS DEPARTMENT OF TRANSPORTATION		I-57 AT I-294 INTERCHANGE PROJECT PROPOSED I-57 CROSS SECTIONS		F.A.I. RTE. = 57	SECTION = 1414.2B	COUNTY = COOK	TOTAL SHEETS = 516	SHEET NO. = 516
	DRAWN - JDF	REVISED -					CONTRACT NO. 60J27				
	CHECKED - JPM	REVISED -					FED. ROAD DIST. NO. ILLINOIS FED. AID PROJECT				
	DATE - 3/18/2010	REVISED -					SCALE: 1" = 10' H				
			SHEET NO. OF SHEETS		STA. 1267+50.00 TO STA. 1267+50.00						

P:\602540(57-294)\Road\PI.157 BR\PI.157XS_SHT1.R.dgn