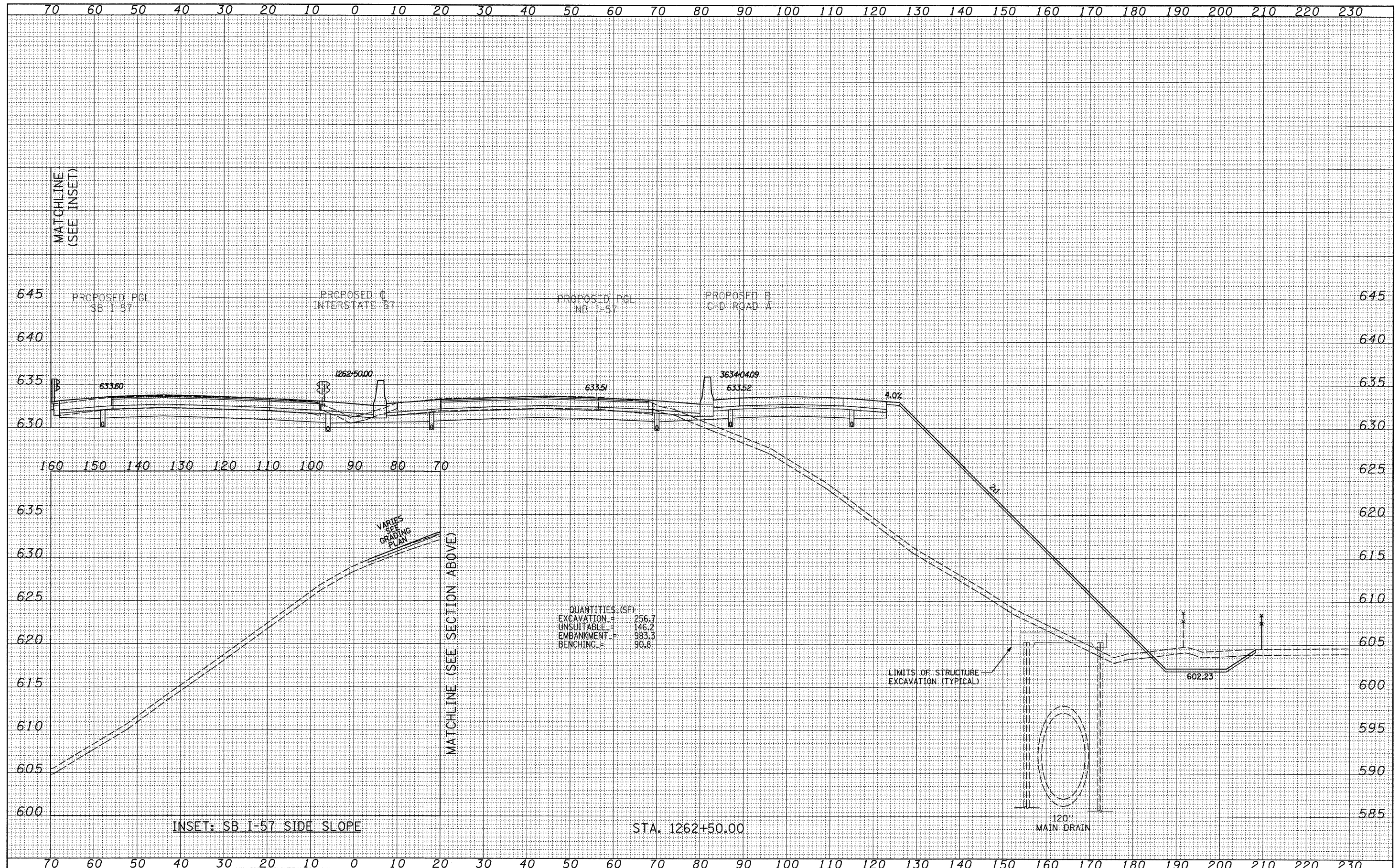


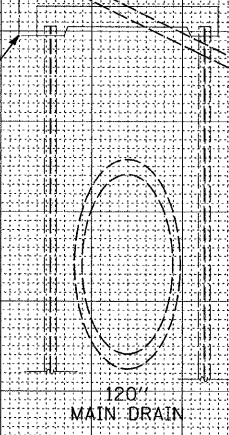
DATE	
BY	
FINAL SURVEY	
PLOTTED	
NOTE BOOK	
AREAS CHECKED	
NO.	

DATE	
BY	
ORIGINAL SURVEY	
PLOTTED	
NOTE BOOK	
AREAS CHECKED	
NO.	



QUANTITIES (SF)

EXCAVATION	=	256.7
UNSUITABLE	=	146.2
EMBANKMENT	=	983.3
BENCHING	=	90.8



**TYLIN INTERNATIONAL**

USER NAME =	DESIGNED - JDF	REVISED - 4/29/2010
	DRAWN - JDF	REVISED -
PLOT SCALE =	CHECKED - JPM	REVISED -
PLOT DATE =	DATE - 3/18/2010	REVISED -

**STATE OF ILLINOIS  
DEPARTMENT OF TRANSPORTATION**

**I-57 AT I-294 INTERCHANGE PROJECT  
PROPOSED I-57 CROSS SECTIONS**

SCALE: 1" = 10' H  
SHEET NO. OF SHEETS STA. 1262+50.00 TO STA. 1262+50.00

F.A.I. RTE.	SECTION	COUNTY	TOTAL SHEETS	SHEET NO.
57	1414.2B	COOK	516	506
CONTRACT NO. 60J27				
FED. ROAD DIST. NO. ILLINOIS FED. AID PROJECT				

P:\602540(57-294)\Road\PI.157 BR\PI-57XS\_SHT\_R.dgn