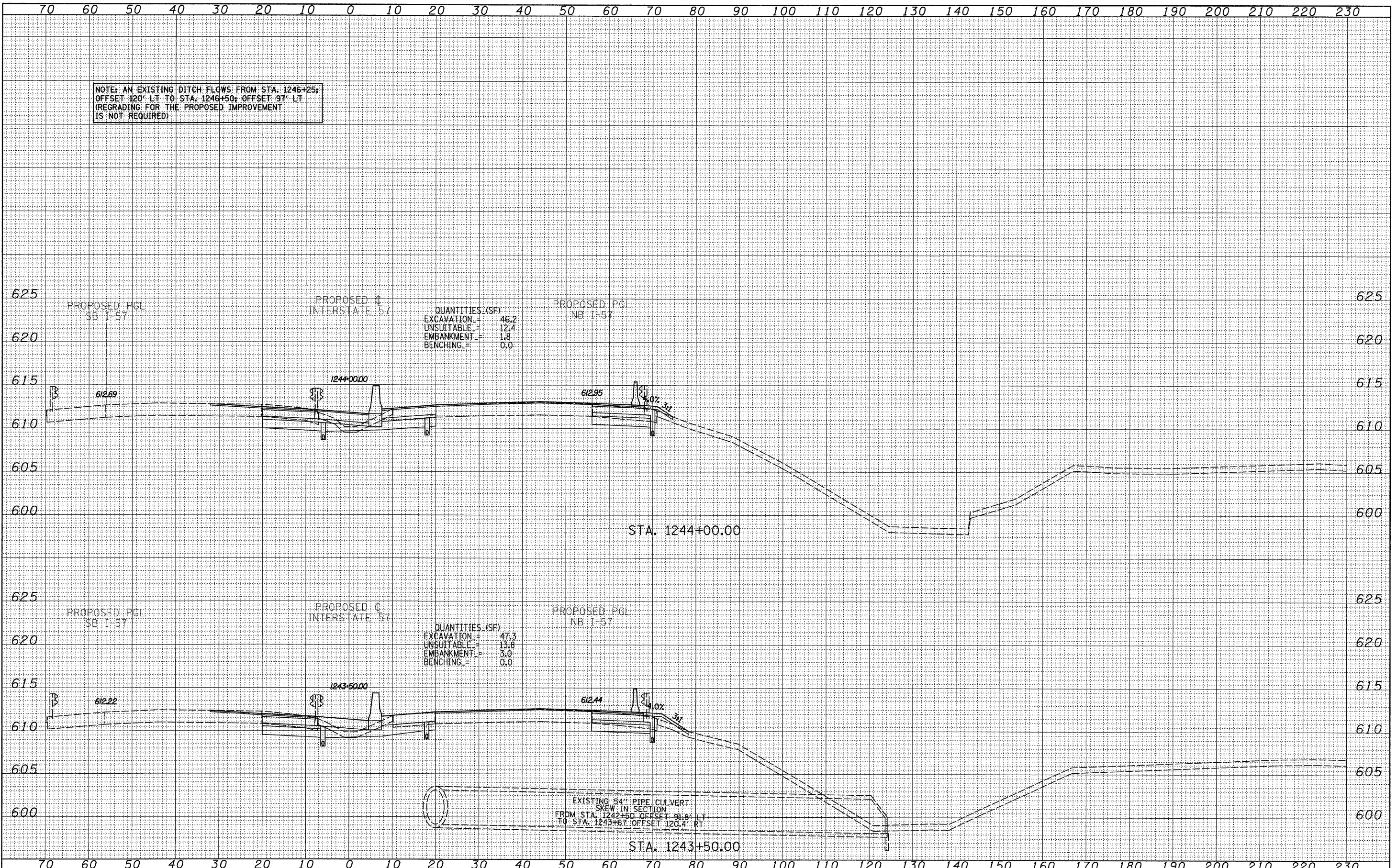


NOTE: AN EXISTING DITCH FLOWS FROM STA. 1246+25. OFFSET 120' LT TO STA. 1246+50; OFFSET 97' LT (REGRADE FOR THE PROPOSED IMPROVEMENT IS NOT REQUIRED)

DATE	
BY	
SURVEYED	
PLOTTED	
NOTE BOOK	
AREAS CHECKED	
NO.	

DATE	
BY	
SURVEYED	
PLOTTED	
NOTE BOOK	
AREAS CHECKED	
NO.	



TYLIN INTERNATIONAL	USER NAME =	DESIGNED - JDF	REVISED - 4/29/2010	STATE OF ILLINOIS DEPARTMENT OF TRANSPORTATION	I-57 AT I-294 INTERCHANGE PROJECT		F.A.I. RTE.	SECTION	COUNTY	TOTAL SHEETS	SHEET NO.
	PLOT SCALE =	DRAWN - JDF	REVISED -		57	1414.2B	COOK	516	480		
	PLOT DATE =	CHECKED - JPM	REVISED -		PROPOSED I-57 CROSS SECTIONS		CONTRACT NO. 60J27		FED. ROAD DIST. NO. [ILLINOIS] FED. AID PROJECT		
		DATE - 3/18/2010	REVISED -		SCALE: 1" = 10' V	SHEET NO. OF SHEETS	STA. 1243+50.00 TO STA. 1244+00.00				

P:\602540(57-294)\Road\PI.157 BR\PI.57XS_SHT_R.dgn