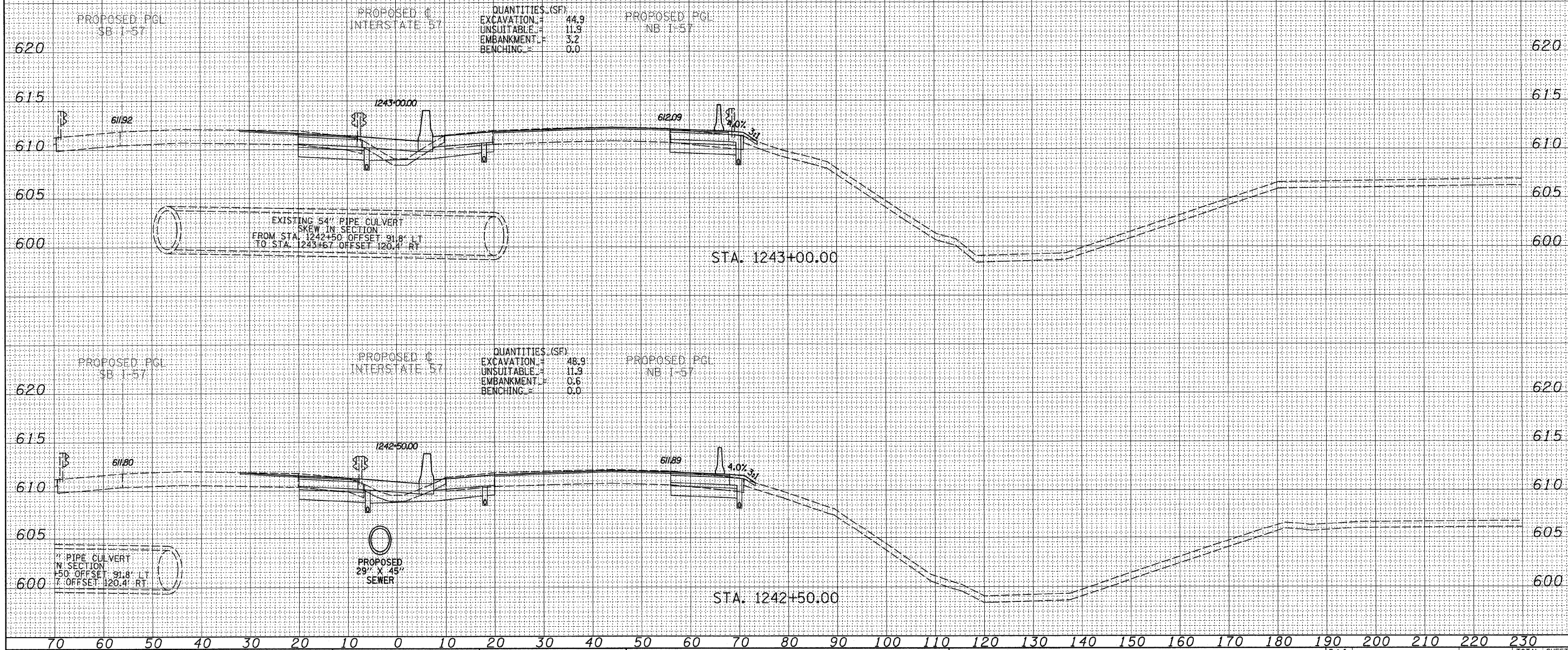


70 60 50 40 30 20 10 0 10 20 30 40 50 60 70 80 90 100 110 120 130 140 150 160 170 180 190 200 210 220 230

NOTE: AN EXISTING DITCH FLOWS FROM STA. 1246+25;
 OFFSET 120' LT TO STA. 1246+50; OFFSET 97' LT
 (REGRADE FOR THE PROPOSED IMPROVEMENT
 IS NOT REQUIRED)

DATE	
BY	
SURVEYED	
PLOTTED	
NOTE BOOK	
AREAS CHECKED	
NO.	

DATE	
BY	
SURVEYED	
PLOTTED	
NOTE BOOK	
AREAS CHECKED	
NO.	



TYLIN INTERNATIONAL

USER NAME =	DESIGNED - JDF	REVISED -
PLLOT SCALE =	DRAWN - JDF	REVISED -
PLLOT DATE =	CHECKED - JPM	REVISED -
	DATE - 3/18/2010	REVISED -

STATE OF ILLINOIS
 DEPARTMENT OF TRANSPORTATION

I-57 AT I-294 INTERCHANGE PROJECT
 PROPOSED I-57 CROSS SECTIONS
 SCALE: 1" = 10' H
 SHEET NO. OF SHEETS STA. 1242+50.00 TO STA. 1243+00.00

F.A.I. RTE.	SECTION	COUNTY	TOTAL SHEETS	SHEET NO.
57	1414.2B	COOK	516	479
FED. ROAD DIST. NO.			ILLINOIS FED. AID PROJECT	
			CONTRACT NO. 60J27	