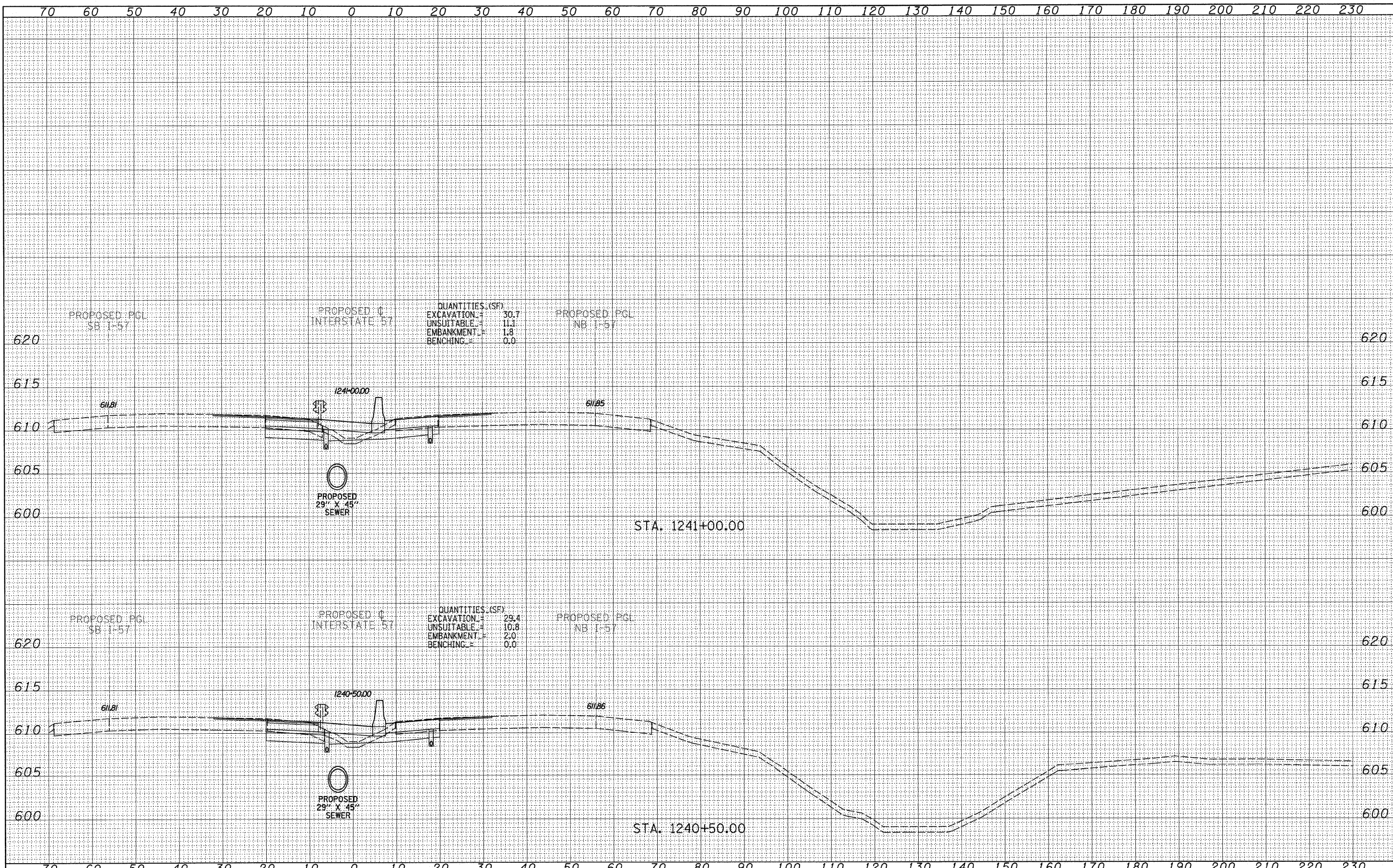


FINAL SURVEY	SURVEYED	BY	DATE
NOTE BOOK	PLOTTED		
NO.	AREAS CHECKED		

ORIGINAL SURVEY	SURVEYED	BY	DATE
NOTE BOOK	PLOTTED		
NO.	AREAS CHECKED		



TYLIN INTERNATIONAL

USER NAME =
 PLLOT SCALE =
 PLOT DATE =

DESIGNED - JDF
 DRAWN - JDF
 CHECKED - JPM
 DATE - 3/18/2010

REVISED -
 REVISED -
 REVISED -
 REVISED -

STATE OF ILLINOIS
 DEPARTMENT OF TRANSPORTATION

I-57 AT I-294 INTERCHANGE PROJECT
 PROPOSED I-57 CROSS SECTIONS

SCALE: 1" = 10' H
 SHEET NO. OF SHEETS STA. 1240+50.00 TO STA. 1241+00.00

F.A.I. RTE.	SECTION	COUNTY	TOTAL SHEETS	SHEET NO.
57	1414.2B	COOK	516	477
FED. ROAD DIST. NO. ILLINOIS FED. AID PROJECT			CONTRACT NO. 60J27	