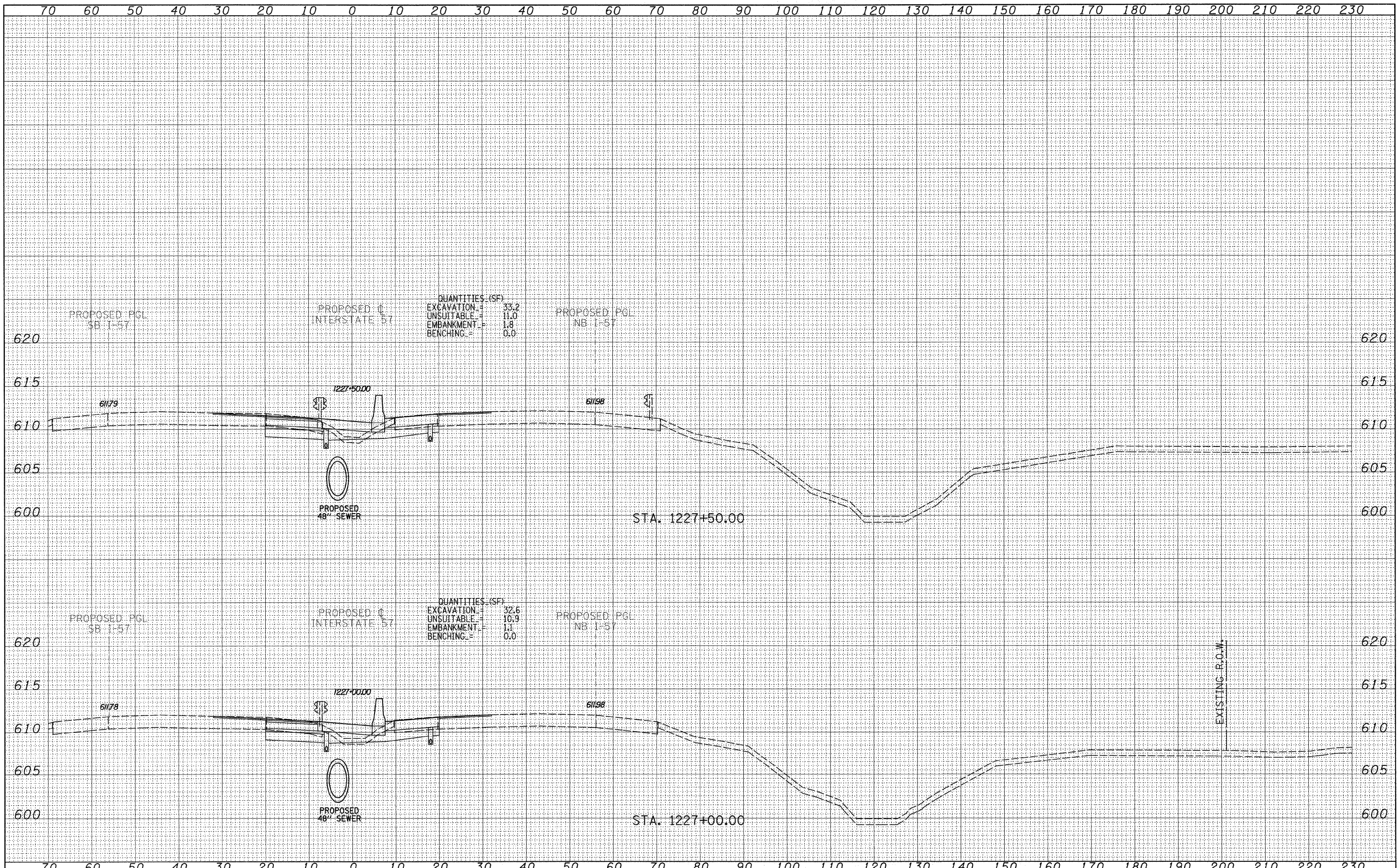


FINAL SURVEY	SURVEYED	DATE
NOTE BOOK	PLOTTED	BY
NO.	TEMPLATE	
	AREAS CHECKED	

ORIGINAL SURVEY	SURVEYED	DATE
NOTE BOOK	PLOTTED	BY
NO.	TEMPLATE	
	AREAS CHECKED	



QUANTITIES (SF)
 EXCAVATION = 33.2
 UNSUITABLE = 11.0
 EMBANKMENT = 1.8
 BENCHING = 0.0

QUANTITIES (SF)
 EXCAVATION = 32.6
 UNSUITABLE = 10.9
 EMBANKMENT = 1.1
 BENCHING = 0.0

TYLIN INTERNATIONAL

USER NAME =	DESIGNED - JDF	REVISED -
PLLOT SCALE =	DRAWN - JDF	REVISED -
PLLOT DATE =	CHECKED - JPM	REVISED -
	DATE - 3/18/2010	REVISED -

STATE OF ILLINOIS
 DEPARTMENT OF TRANSPORTATION

I-57 AT I-294 INTERCHANGE PROJECT
 PROPOSED I-57 CROSS SECTIONS
 SCALE: 1" = 10' V, 1" = 100' H
 SHEET NO. OF SHEETS STA. 1227+00.00 TO STA. 1227+50.00

F.A.I. RTE.	SECTION	COUNTY	TOTAL SHEETS	SHEET NO.
57	1414.2B	COOK	516	463
FED. ROAD DIST. NO.			ILLINOIS FED. AID PROJECT	
			CONTRACT NO. 60J27	

P:\602540(57-294)\Road\PI_157_BR\PI_57XS_SHT.dgn