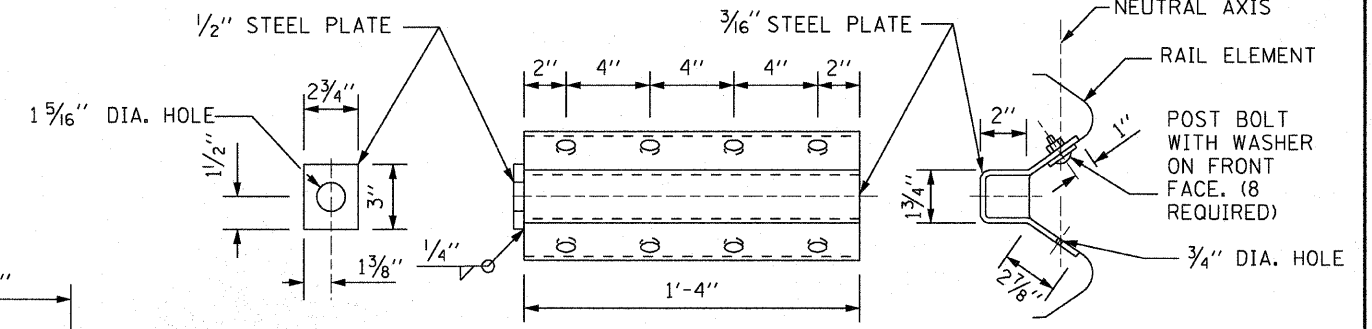
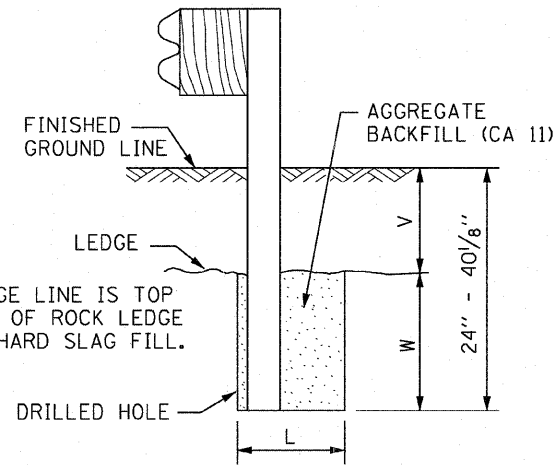


V	W	L	
		STEEL POST	WOOD POST
0 - 16 1/8"	24"	21"	23"
> 16 1/8" - 28 1/8"	12"	8"	10"
> 28 1/8" - 40 1/8"	12" - 0	8"	10"



NOTE:
ANCHOR PLATE T SHALL BE USED TO ATTACH CABLE ASSEMBLY TO GUARDRAIL WHEN REQUIRED ON TRAFFIC BARRIER TERMINALS.

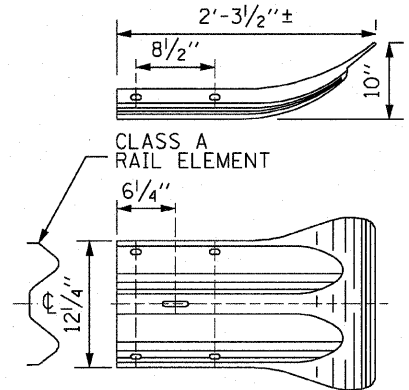
ANCHOR PLATE T DETAILS



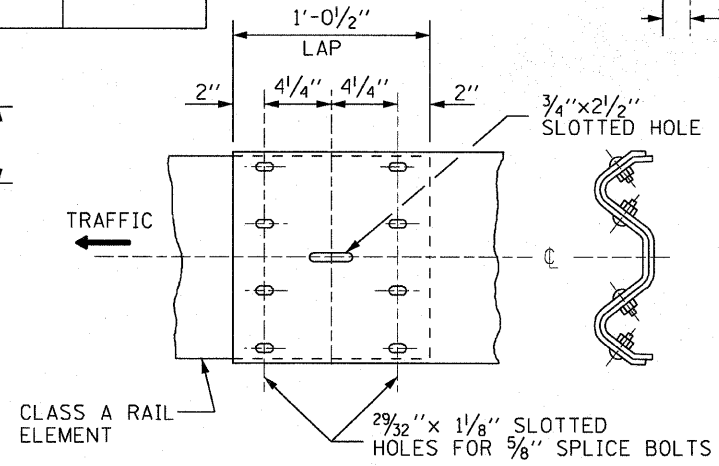
NOTE:
LEDGE LINE IS TOP TOP OF ROCK LEDGE OR HARD SLAG FILL.

ELEVATION

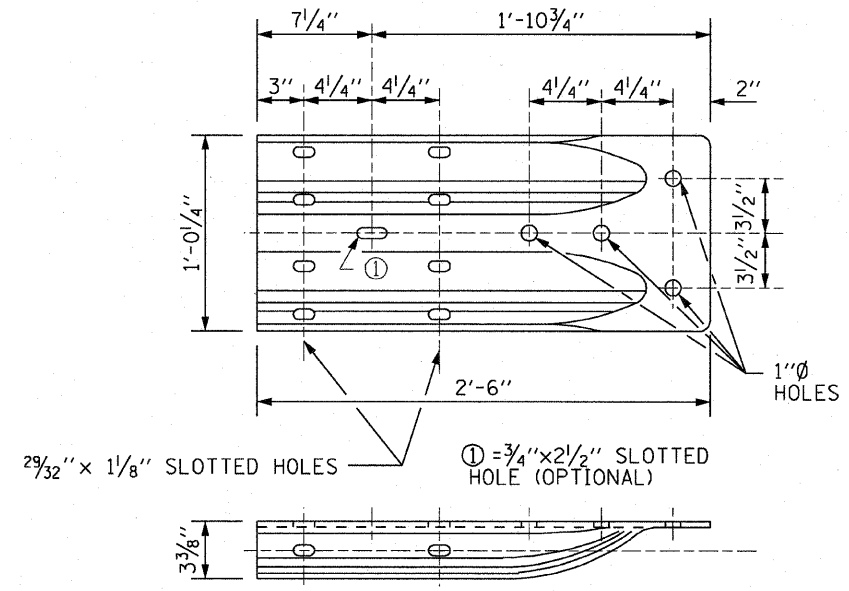
FOOTING FOR POST WHEN IMPERVIOUS MATERIAL IS ENCOUNTERED



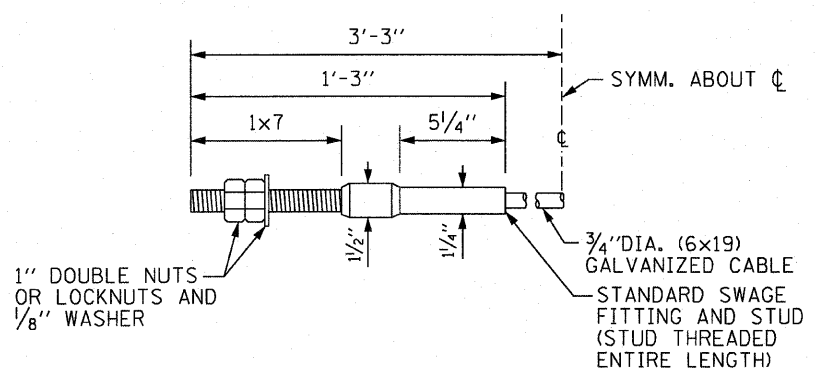
END SECTION



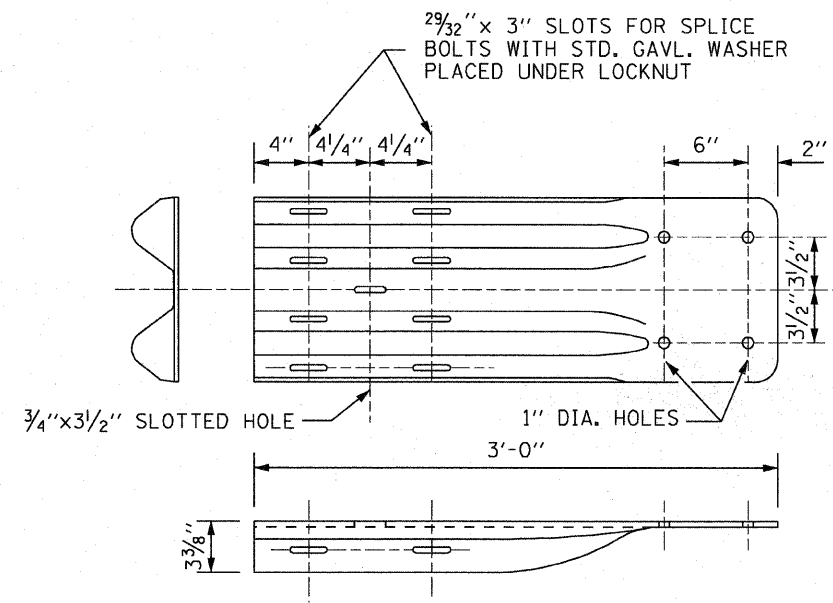
RAIL ELEMENT SPLICE



ALTERNATE END SHOE



CABLE ASSEMBLY
(40,000 LBS.) MIN. BREAKING STRENGTH)
TIGHTEN TO TAUT TENSION.



NOTE:

WHEN END SHOE IS ATTACHED TO A BRIDGE PARAPET WHICH HAS AN EXPANSION JOINT, THE BOLTS SHALL BE PROVIDED WITH A LOCKNUT OR DOUBLE NUT AND SHALL BE TIGHTENED ONLY TO A POINT THAT WILL ALLOW GUARDRAIL MOVEMENT.

THE STANDARD END SHOE SHALL BE ATTACHED TO THE CONCRETE WITH PRE-DRILLED OR SELF-DRILLING ANCHOR BOLTS. THE ANCHOR CONE SHALL BE SET FLUSH WITH THE SURFACE OF THE CONCRETE.

EXTERNALLY THREADED STUDS PROTRUDING FROM THE SURFACE OF THE CONCRETE WILL NOT BE PERMITTED.

END SHOE

Illinois Tollway
Open Roads for a Faster Future

GALVANIZED STEEL PLATE
BEAM GUARDRAIL

STANDARD C1-03

Paul Kovacs
APPROVED..... CHIEF ENGINEER..... DATE 7-1-2009