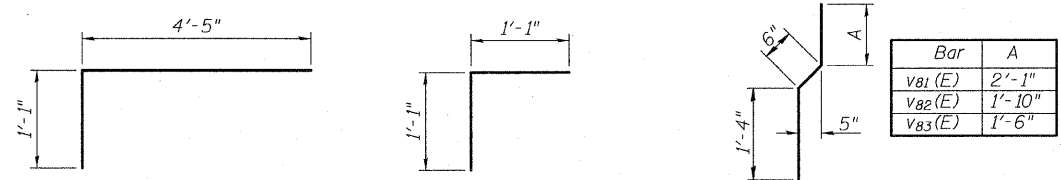
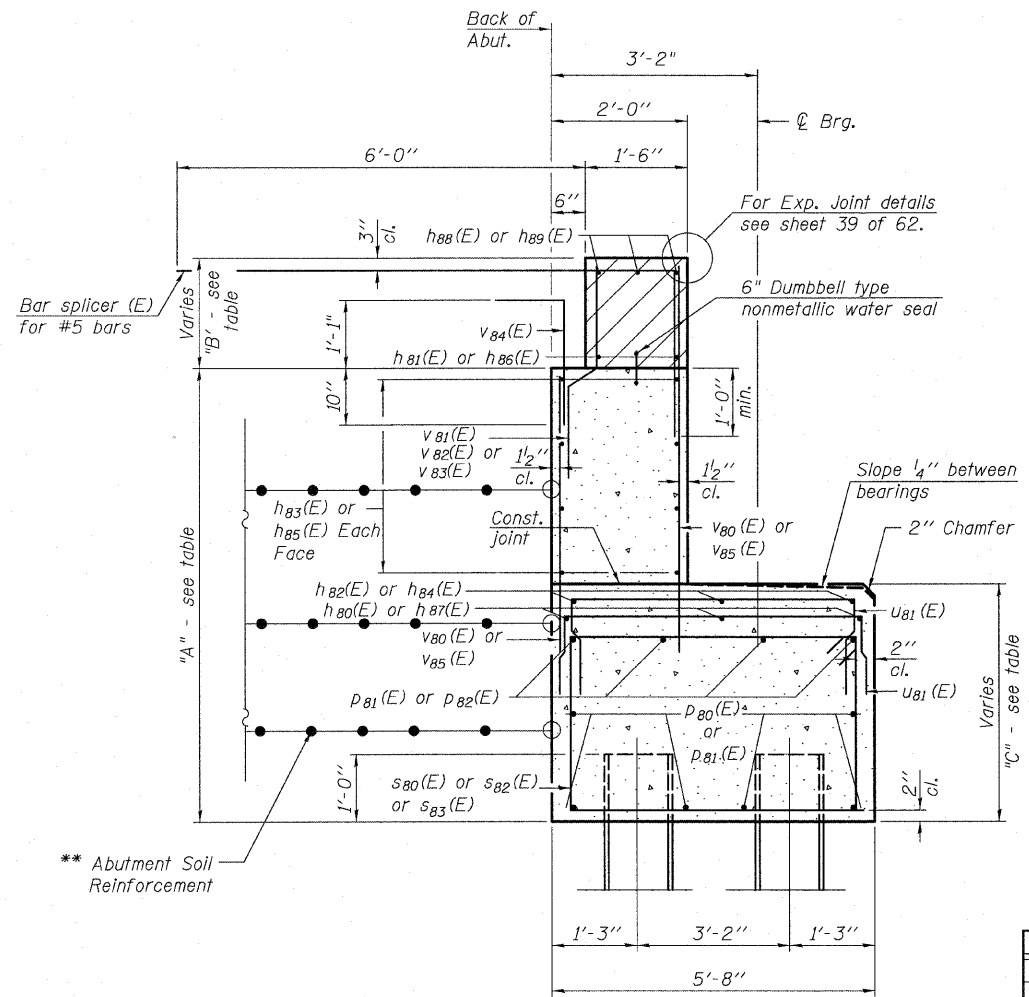


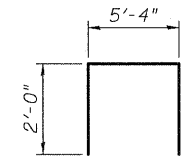
STATE OF ILLINOIS  
DEPARTMENT OF TRANSPORTATION

WEST ABUTMENT  
BILL OF MATERIAL



Bar	A
s80(E)	3'-2"
s82(E)	3'-5"
s83(E)	3'-9"

BARS s80(E), s82(E) & s83(E)      BAR u80(E)



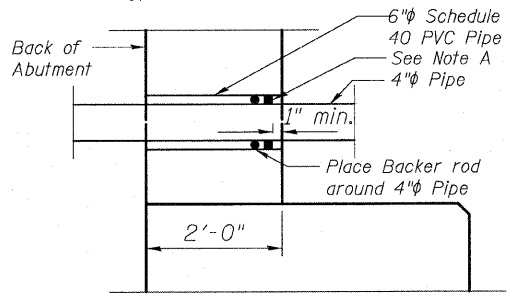
BARS u81(E)

Location	A	B	C
C-D Road A	6'-9 <sup>3</sup> / <sub>4</sub> "	1'-4" to 1'-8 <sup>1</sup> / <sub>2</sub> "	4'-0 <sup>5</sup> / <sub>8</sub> " to 4'-4"
NB I-57	6'-4 <sup>3</sup> / <sub>4</sub> "	1'-4" to 2'-0 <sup>5</sup> / <sub>8</sub> "	3'-7 <sup>5</sup> / <sub>8</sub> " to 4'-3 <sup>3</sup> / <sub>8</sub> "
SB I-57	6'-3"	1'-4" to 2'-3"	3'-6" to 4'-4"

SEC. THRU ABUT.

Note A:  
Non-staining gray one component non-sag elastomeric gun grade polyurethane sealant meeting the requirements of ASTM C-920, Type S, Grade NS, Class 25 rod.

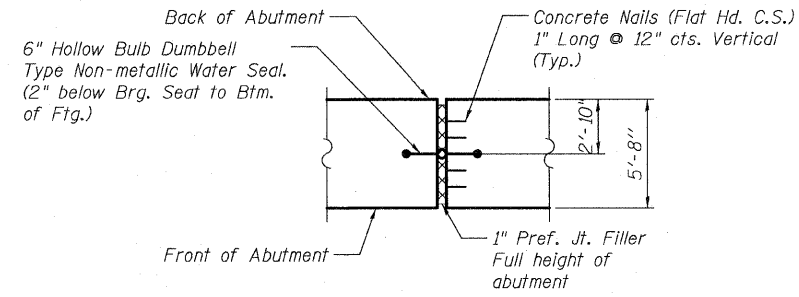
\*\* The M.S.E. wall supplier shall design the abutment soil reinforcement to resist a horizontal force of 2 kips/ft. Contractor shall coordinate abutment construction with construction of MSE retaining wall.



DETAIL B

Shown for 6" pipe.  
Use 10" Schedule 40 PVC pipe for 8" drainage pipe.

Note: Backer Rod, 6" PVC Pipe & sealant shall be included in the cost of Concrete Structures.



SECTION A-A

Cost of Water Seal included in the cost of Concrete Structures.

Bar	No.	Size	Length	Shape
b103(E)	8	#6	6'-4"	Γ
h80(E)	6	#5	29'-9"	—
h81(E)	8	#6	39'-9"	—
h82(E)	6	#5	18'-6"	—
h83(E)	32	#5	39'-10"	—
h84(E)	3	#5	18'-2"	—
h85(E)	16	#5	22'-9"	—
h86(E)	4	#6	22'-8"	—
h87(E)	3	#5	43'-7"	—
h88(E)	6	#6	23'-9"	—
h89(E)	12	#6	40'-1"	—
p80(E)	24	#7	40'-6"	—
p81(E)	10	#7	42'-3"	—
p82(E)	16	#7	40'-10"	—
s80(E)	132	#4	17'-9"	□
s82(E)	131	#4	18'-3"	□
s83(E)	72	#4	18'-11"	□
u80(E)	24	#6	8'-5"	—
u81(E)	158	#4	7'-4"	—
v80(E)	154	#5	5'-9"	—
v81(E)	77	#4	3'-11"	—
v82(E)	77	#4	3'-8"	—
v83(E)	44	#4	3'-4"	—
v84(E)	198	#5	3'-10"	Γ
v85(E)	242	#5	5'-11"	—
Structure Excavation			Cu. Yd.	4,010
Concrete Structures			Cu. Yd.	206.1
Reinforcement Bars, Epoxy Coated			Pound	16,870
Furnishing Steel Piles, HP12x53			Foot	2,091
Pile Shoes			Each	52
Driving Piles			Foot	2,091
Test Pile Steel HP12x53			Each	1
Concrete Sealer			Sq. Ft.	1,650

For details of Bar Splicers, see sheet 55 of 62.  
For details of piles, see sheet 56 of 62.

PILE DATA

Type: HP12x53 with Piles Shoes  
Nominal Required Bearing: 300 kips  
Factored Resistance Available: 150 kips  
Est. Length: 41 ft  
No. Production Piles: 51  
No. Test Piles: 1

WEST ABUTMENT DETAILS  
S.N. 016-1252

TYLIN INTERNATIONAL	DESIGNED - DY	REVISIONS		SHEET NO. 46	F.A.I. RTE.	SECTION	COUNTY	TOTAL SHEETS	SHEET NO.	
	CHECKED - AD,LS	NAME	DATE		57	1414.2B	COOK	516	359	
	DRAWN - DY,EI				62 SHEETS	CONTRACT NO. 60J27				
	CHECKED - LS,SP,PDF				FED. ROAD DIST. NO. 1 ILLINOIS FED. AID PROJECT					
	DATE - 03/18/10									

P:\62540167-2941\STRUCTURAL\I-57\_OVER\_RAMP\_BYI.mel\_submittal\_03-17-2010\Final\_submittal\_03172010\0161252-60J27-046-W.ABUT\_DT.L.dwg 9:54:47 AM 3/18/2010