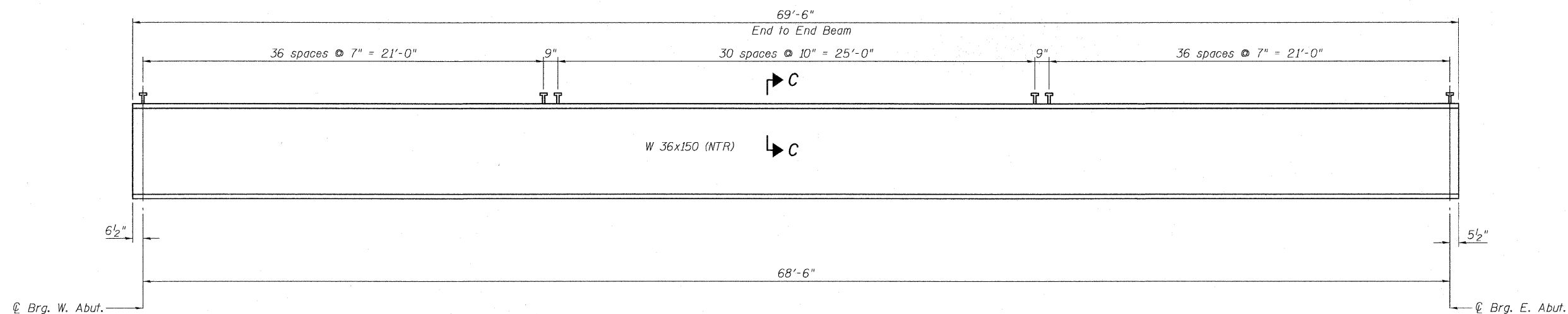
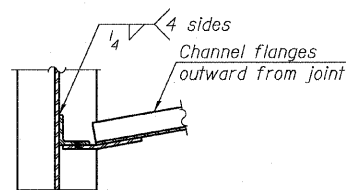


STATE OF ILLINOIS
DEPARTMENT OF TRANSPORTATION

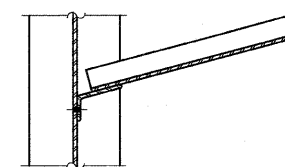


BEAM ELEVATION

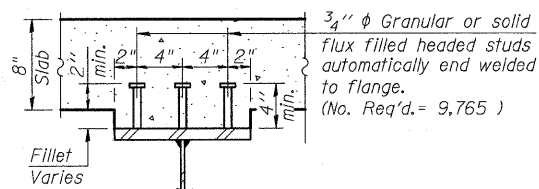
Load carrying components designated "NTR" shall conform to the Supplemental Requirements for Notch Toughness, Zone 2.



SECTION A-A

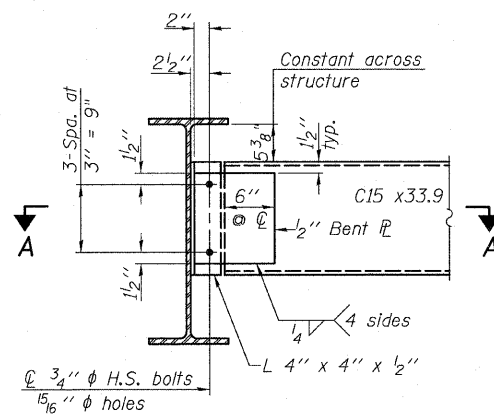


SECTION B-B



SECTION C-C

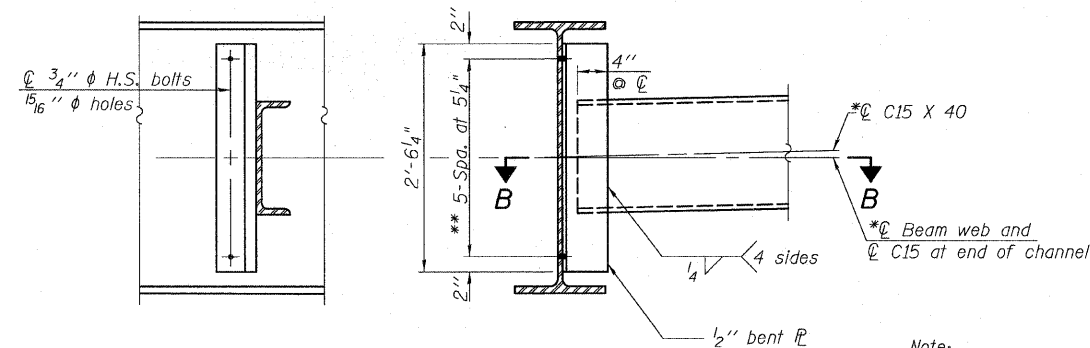
3/4" ϕ Granular or solid flux filled headed studs automatically end welded to flange. (No. Req'd. = 9,765)



END DIAPHRAGM D1,D3

(44 - D1 required)
(12 - D3 required)

Note:
Two hardened washers required for each set of oversized holes.



INTERIOR DIAPHRAGM D2,D4

(44 - D2 required)
(12 - D4 required)

Note:
Two hardened washers required for each set of oversized holes.
*Alternate channels (C15 X 50) are permitted to facilitate material acquisition. Calculated weight of structural steel is based on the lighter section. The alternate, if utilized, shall be provided at no additional cost to the Department.
**3/4" ϕ HS bolts, 5/16" ϕ holes

**STRUCTURAL STEEL DETAILS
SN. 016-1252**

TYLIN INTERNATIONAL	DESIGNED - DY	REVISIONS		SHEET NO. 41	F.A.I RTE.	SECTION	COUNTY	TOTAL SHEETS	SHEET NO.		
	CHECKED - AD,LS	NAME	DATE			57	1414.2B	COOK	516	354	
	DRAWN - DY,EI					62 SHEETS	CONTRACT NO. 60J27				
	CHECKED - LS,SP,PDF					FED. ROAD DIST. NO. 1 ILLINOIS FED. AID PROJECT					
	DATE - 03/18/10										

P:\60254057-2941\STRUCTURAL\1-57 OVER RAMP_B\Final_submittal_03-17-2010\Final_submittal_03172010\0161252-60J27-041-FRAMING_DTL.dgn 9:54:39 AM 3/18/2010