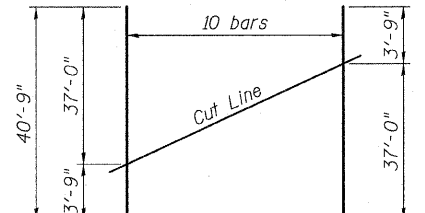
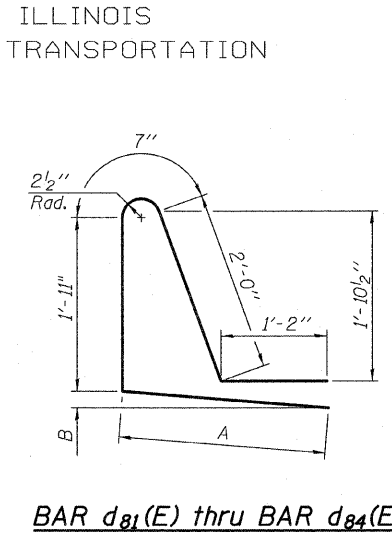
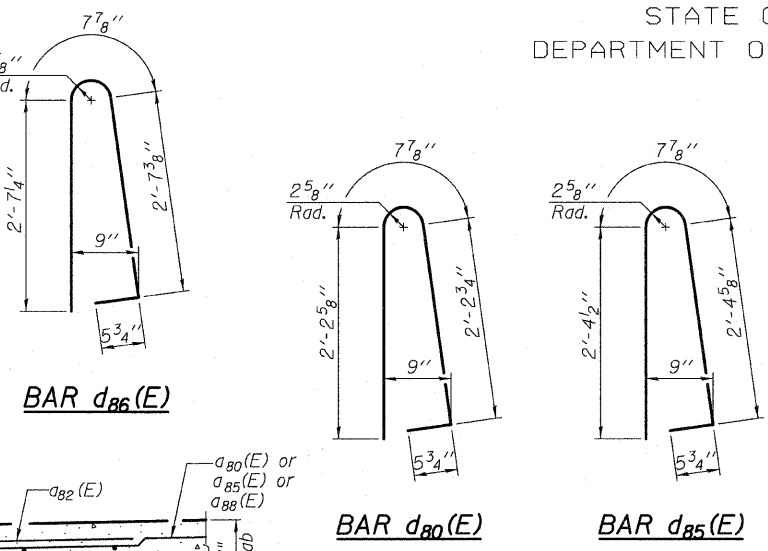
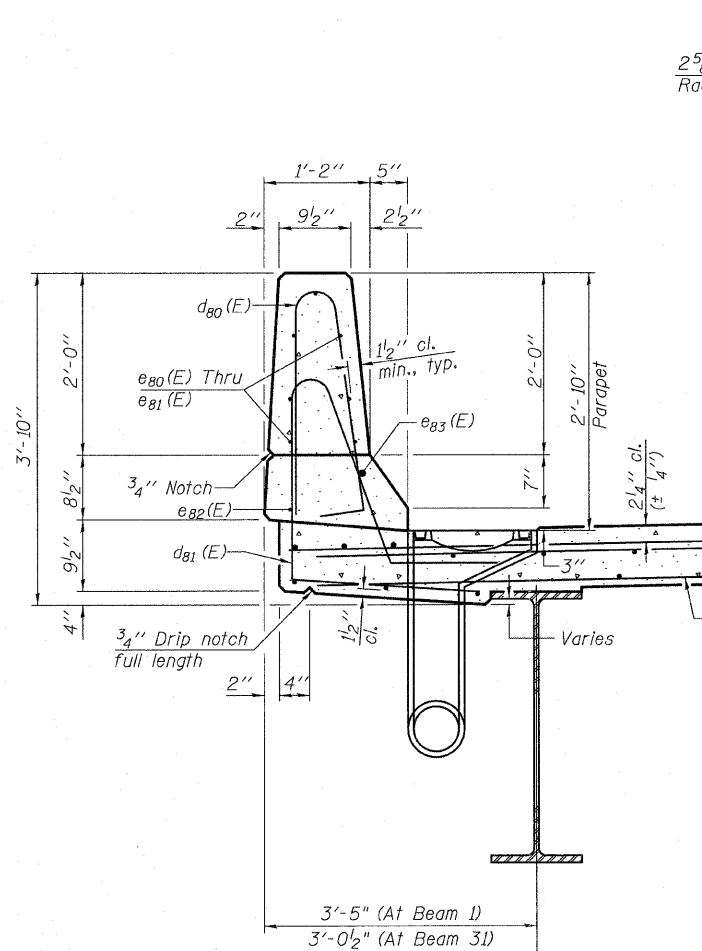


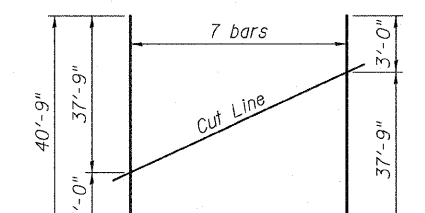
STATE OF ILLINOIS  
DEPARTMENT OF TRANSPORTATION

**SUPERSTRUCTURE  
BILL OF MATERIAL**

Bar	No.	Size	Length	Shape
d80(E)	428	#5	39'-4"	
d81(E)	420	#5	27'-4"	
d82(E)	780	#6	6'-6"	
d83(E)	32	#5	39'-9"	
d84(E)	8	#5	39'-6"	
d85(E)	213	#5	42'-7"	
d86(E)	10	#5	43'-0"	
d87(E)	168	#5	7'-3"	
d88(E)	136	#5	40'-9"	
d89(E)	48	#5	1'-6"	
b80(E)	408	#5	36'-9"	
b81(E)	474	#5	25'-7"	
d80(E)	312	#5	5'-7"	
d81(E)	78	#5	7'-10"	
d82(E)	234	#5	7'-10"	
d83(E)	78	#5	7'-5"	
d84(E)	78	#5	7'-5"	
d85(E)	78	#5	5'-11"	
d86(E)	78	#5	6'-4"	
e80(E)	84	#4	19'-8"	
e81(E)	84	#4	14'-11"	
e82(E)	12	#4	36'-1"	
e83(E)	12	#8	37'-8"	
x80(E)	336	#5	6'-5"	
Reinforcement Bars, Epoxy Coated			Pound	96,380
Concrete Superstructure			Cu. Yds.	448.6



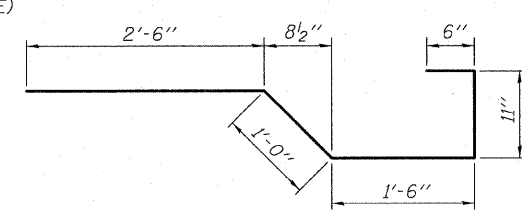
**BAR a88(E) - TOP**  
Order bars full length. Cut as shown and use remainder of bars in opposite end.



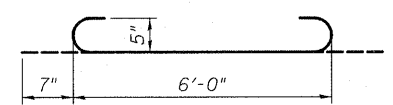
**BAR a88(E) - BOTTOM**  
Order bars full length. Cut as shown and use remainder of bars in opposite end.

**BARS d81(E) thru d84(E)**

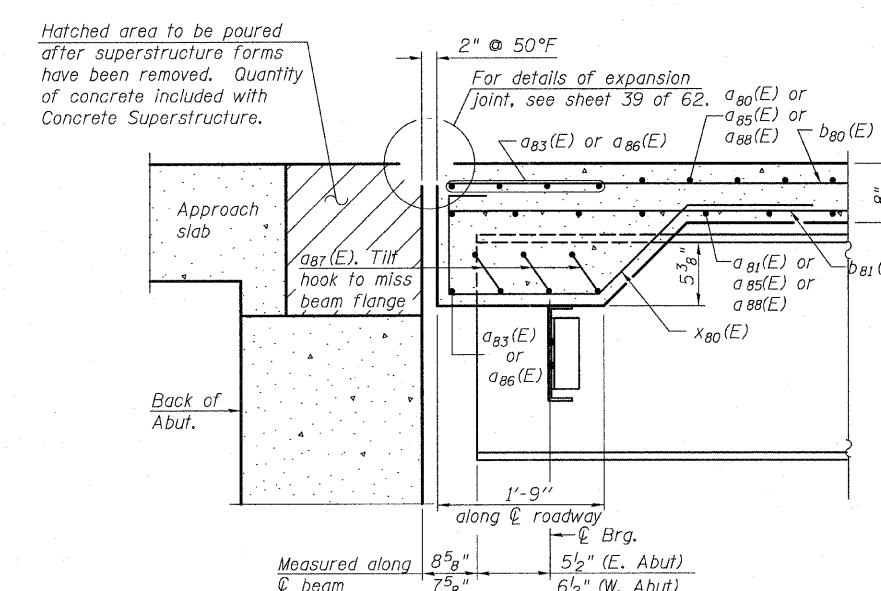
Bar	A	B
d81(E)	2'-2"	2"
d82(E)	2'-2"	0"
d83(E)	1'-9"	2"
d84(E)	1'-9"	0"



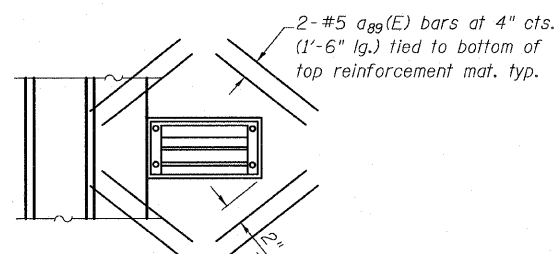
**BAR x80(E)**



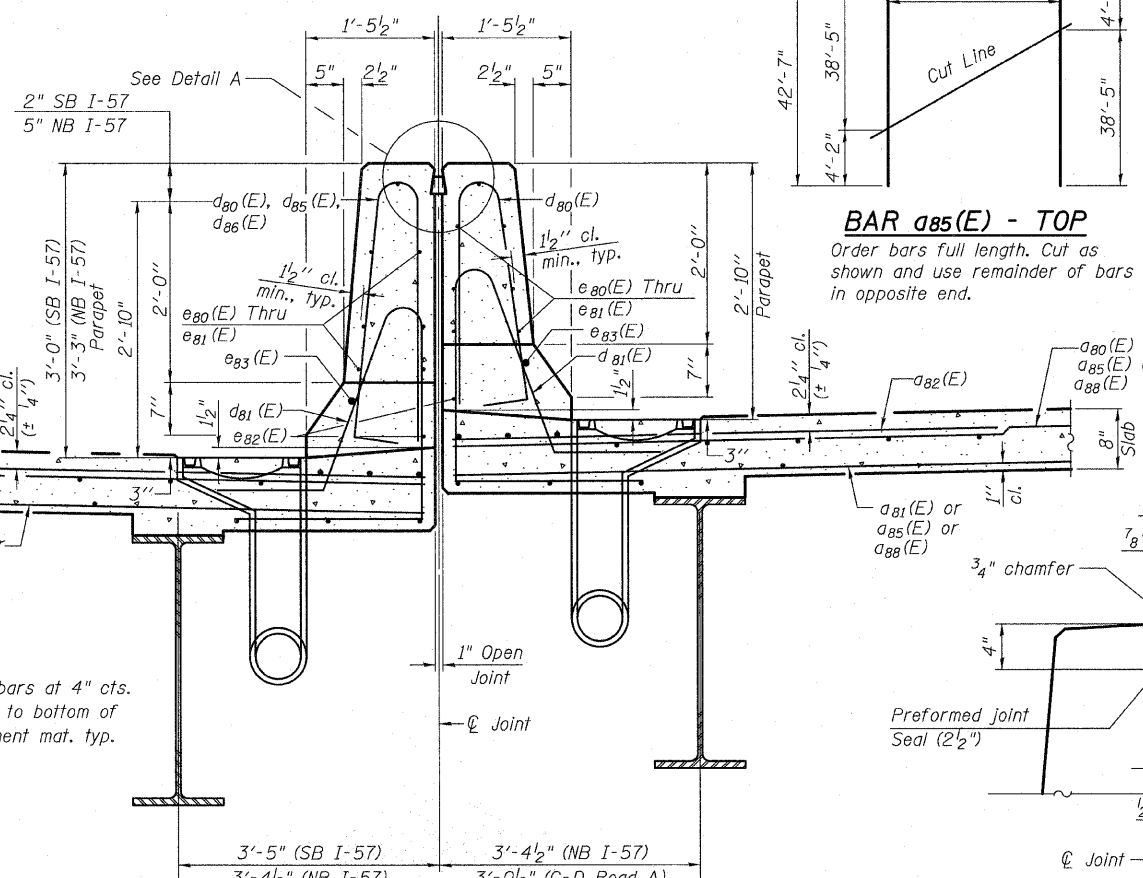
**a87(E) BAR**



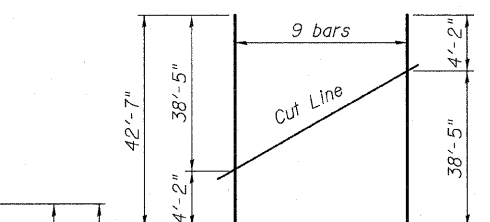
**SECTION A-A**



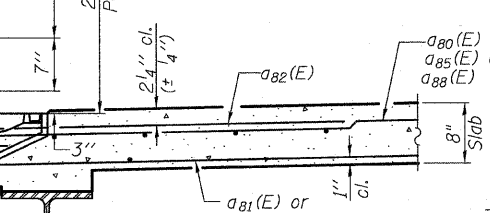
**PLAN AT SCUPPERS**



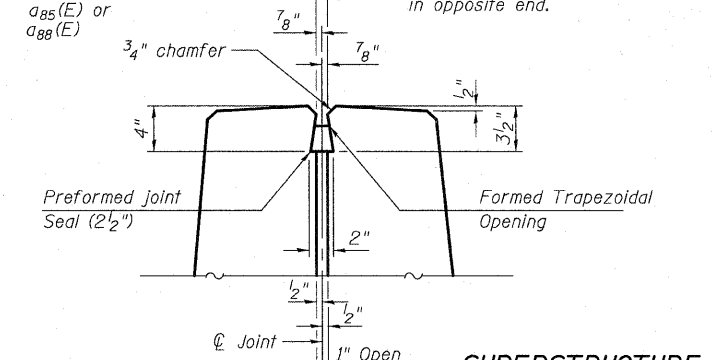
**SECTION AT MEDIAN PARAPET**



**BAR a85(E) - TOP**  
Order bars full length. Cut as shown and use remainder of bars in opposite end.



**BAR a85(E) - BOTTOM**  
Order bars full length. Cut as shown and use remainder of bars in opposite end.



**DETAIL A**

**SUPERSTRUCTURE  
DETAILS  
SN. 016-1252**

**TYLIN INTERNATIONAL**

DESIGNED	DY	REVISIONS	NAME	DATE
CHECKED	AD,LS			
DRAWN	DY,EI			
CHECKED	LS,SP,PDF			
DATE	03/18/10			

SHEET NO. 21	F.A.I. RTE. 57	SECTION 1414.2B	COUNTY COOK	TOTAL SHEETS 516	SHEET NO. 334
62 SHEETS	FED. ROAD DIST. NO. 1 ILLINOIS		CONTRACT NO. 60J27		
FED. AID PROJECT					

F:\60254\057-2941\STRUCTURAL\I-57 OVER RAMP.BX Final submittal\_03-17-2010\Final submittal\_03-17-2010\0161252-60J27-021-SUPER.DTL.dwg 11:26:09 AM 3/18/2010