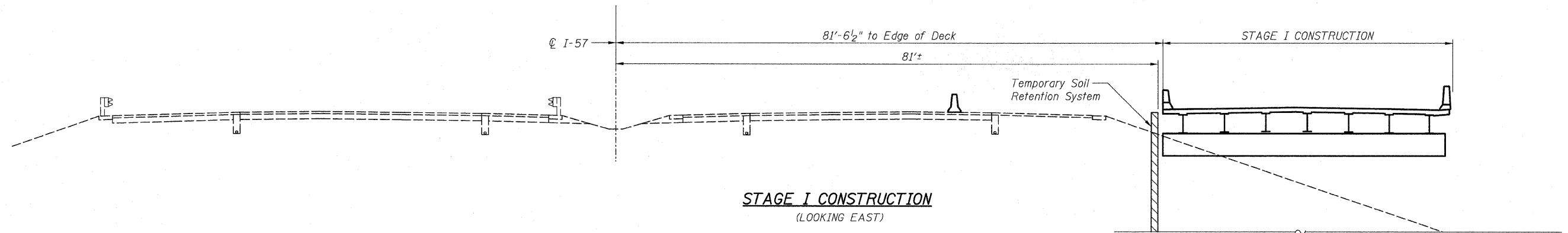
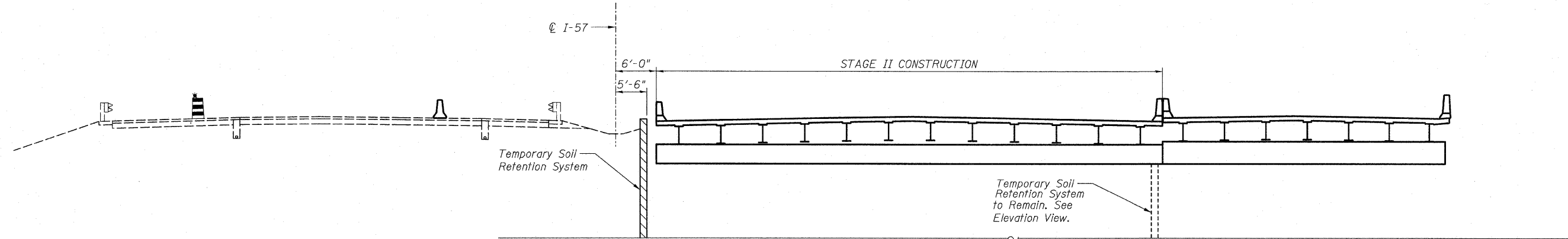


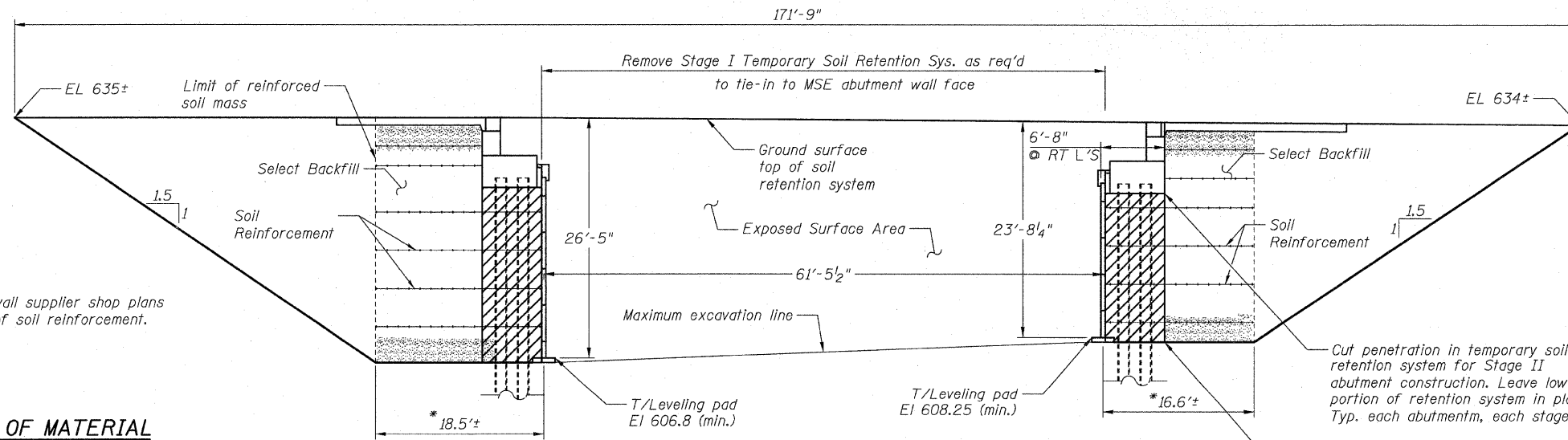
STATE OF ILLINOIS
DEPARTMENT OF TRANSPORTATION



STAGE I CONSTRUCTION
(LOOKING EAST)



STAGE II CONSTRUCTION
(LOOKING EAST)



TEMPORARY SOIL RETENTION ELEVATION
(LOOKING NORTH)

Stage I Retention shown. Stage II Retention similar.

* See MSE wall supplier shop plans for limit of soil reinforcement.

BILL OF MATERIAL

ITEM	UNIT	TOTAL
Temporary Soil Retention System	Sq Ft	6820

NOTES

1. A cantilevered sheet piling design does not appear feasible and additional members or other retention systems may be necessary. The Contractor shall submit a temporary soil retention system design including plan details and calculations for review and acceptance by the engineer.

**TEMPORARY SOIL RETENTION SYSTEM
STRUCTURE NO. 016-1252**

TYLIN INTERNATIONAL

DESIGNED -	AMD	REVISIONS	
CHECKED -	AMD	NAME	DATE
DRAWN -	MRB		
CHECKED -	AMD		
DATE -	03/18/10		

SHEET NO. 4
62 SHEETS

F.A.I. RTE.	SECTION	COUNTY	TOTAL SHEETS	SHEET NO.
57	1414.2B	COOK	516	317
CONTRACT NO. 60J27				
FED. ROAD DIST. NO. 1 ILLINOIS FED. AID PROJECT				

P:\602540\67-294\STRUCTURAL\I-57 OVER RAMP BV\Final submittal_03-17-2010\Final submittal_03172010\0161252-60J27-004-STAGE_CONSTR2.dgn 9:53:38 AM 3/18/2010