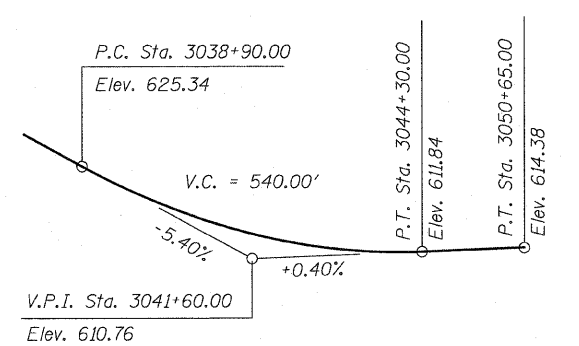
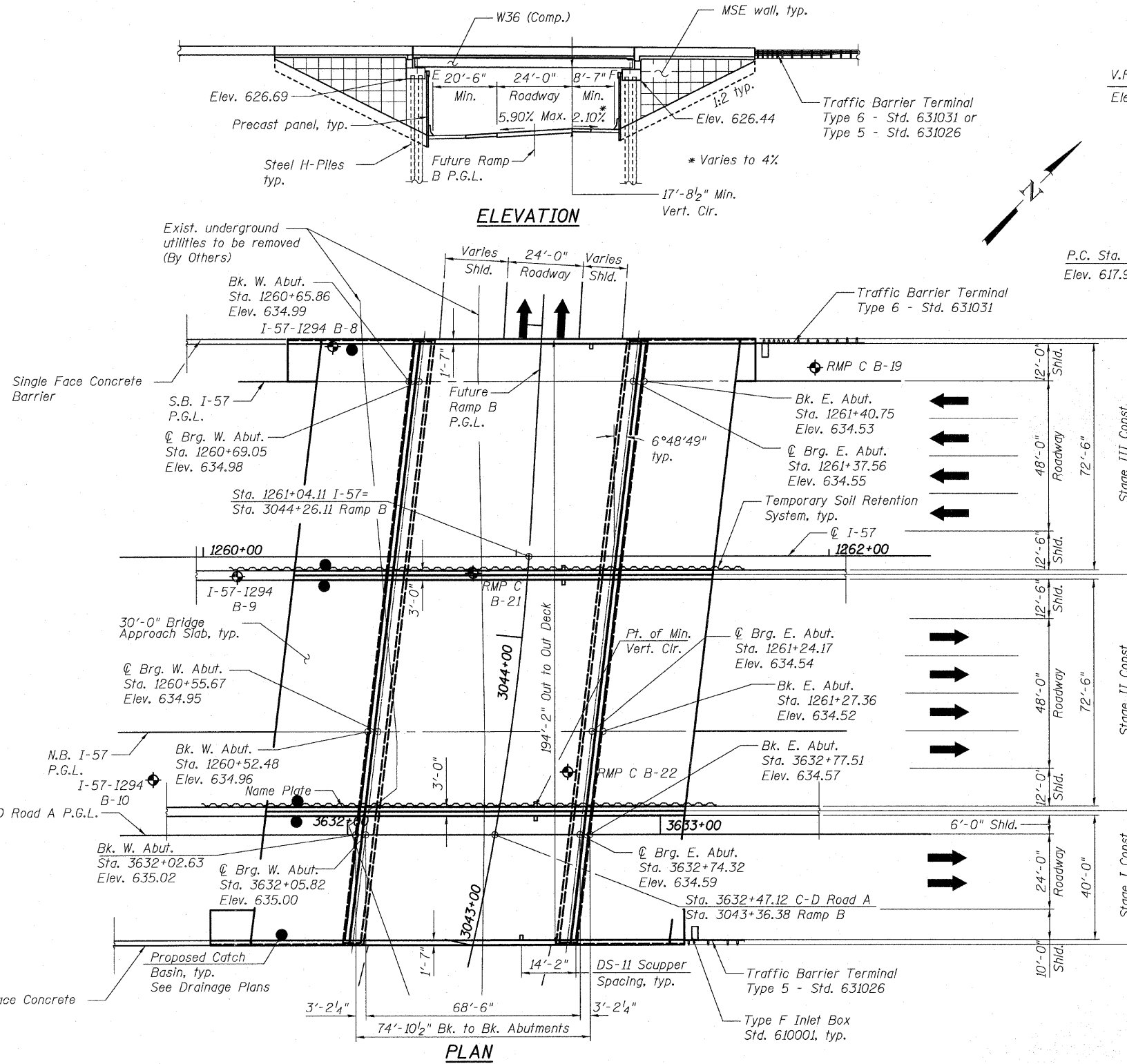


STATE OF ILLINOIS
DEPARTMENT OF TRANSPORTATION

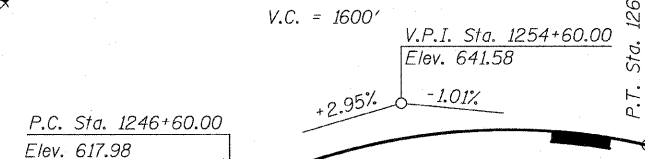
Bench Mark: Iron rod with yellow cap set 7'± off west side of N.B. I-294 shoulder at Sta. 400+00. Elev. 610.79

Existing Structures: None. Structure to be constructed in 3 stages utilizing stage construction.

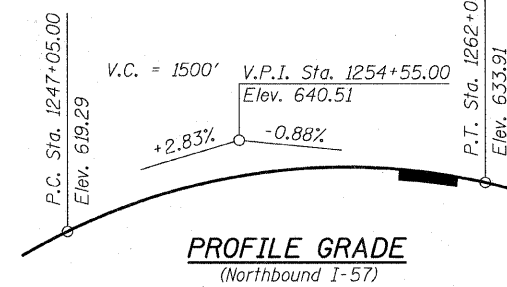
Salvage: None



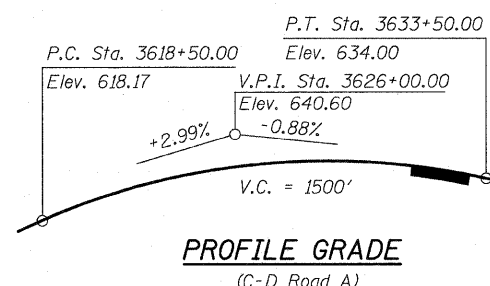
PROFILE GRADE
(Ramp B)



PROFILE GRADE
(Southbound I-57)



PROFILE GRADE
(Northbound I-57)



PROFILE GRADE
(C-D Road A)

PROPOSED HORIZONTAL RAMP B CURVE DATA
 PI STA. = 3042+99.82
 $\Delta = 128^\circ 46' 46''$ (LT)
 $D = 6^\circ 45' 52''$
 $R = 847.00'$
 $T = 1,767.01'$
 $L = 1,903.74'$
 $E = 1,112.52'$
 $e = 5.9\%$
 $S.E. RUN = 196.5'$
 P.C. STA. = 3025+32.81
 P.T. STA. = 3044+36.55

STATION 1261+04.11
 BUILT 20 BY
 STATE OF ILLINOIS
 F.A.I. RTE. 57 SEC. 1414.2B
 LOADING HL-93
 STRUCTURE NO. 016-1252

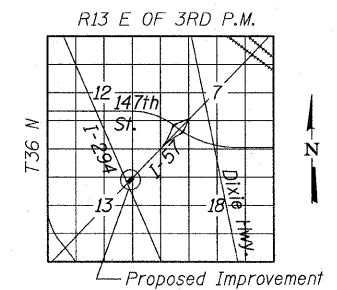
NAME PLATE
 See Std. 515001

DESIGN SPECIFICATIONS
 2007 AASHTO LRFD Bridge Design Specifications,
 4th Edition, with 2008 and 2009 Interims

LOADING HL-93
 Allow 50#/sq. ft. for future wearing surface.

DESIGN STRESSES
FIELD UNITS
 $f'_c = 3,500$ psi
 $f_y = 60,000$ psi (Reinforcement)
 $f_y = 50,000$ psi (M270 Grade 50)

SEISMIC DATA
 Seismic Performance Zone (SPZ) = 1
 Design Spectral Acceleration at 1.0 sec. (S_D) = 0.065g
 Design Spectral Acceleration at 0.2 sec. (S_D) = 0.116g
 Soil Site Class = C



LOCATION SKETCH

APPROVED
 FOR STRUCTURAL ADEQUACY ONLY

Ralph E. Anderson (TS)
 ENGINEER OF BRIDGES AND STRUCTURES



Signed *J.P.O.*
 Spiros Pantazis, S.E. II, Lic. No. 081-006448
 Expires 11-30-2010
 Date 3-18-10

GENERAL PLAN & ELEVATION
I-57 OVER RAMP B
F.A.I. RTE. 57 SEC. 1414.2B
COOK COUNTY
STATION 1261+04.11
STRUCTURE NO. 016-1252

TYLIN INTERNATIONAL	DESIGNED - DY	REVISIONS		SHEET NO. 1	F.A.I. RTE.	SECTION	COUNTY	TOTAL SHEETS	SHEET NO.	
	CHECKED - AD,LS	NAME	DATE		62 SHEETS	57	1414.2B	COOK	516	314
	DRAWN - DY,EI					CONTRACT NO. 60J27				
	CHECKED - LS,SP,PDF					FED. ROAD DIST. NO. 1 ILLINOIS FED. AID PROJECT				
	DATE - 03/18/10									

P:\602540\57-294\STRUCTURAL\I-57 OVER RAMP B\Final submittal_03-17-2010\Final submittal_03-17-2010_0161252-60127-001-GPE.dgn 11:11:55 AM 3/18/2010