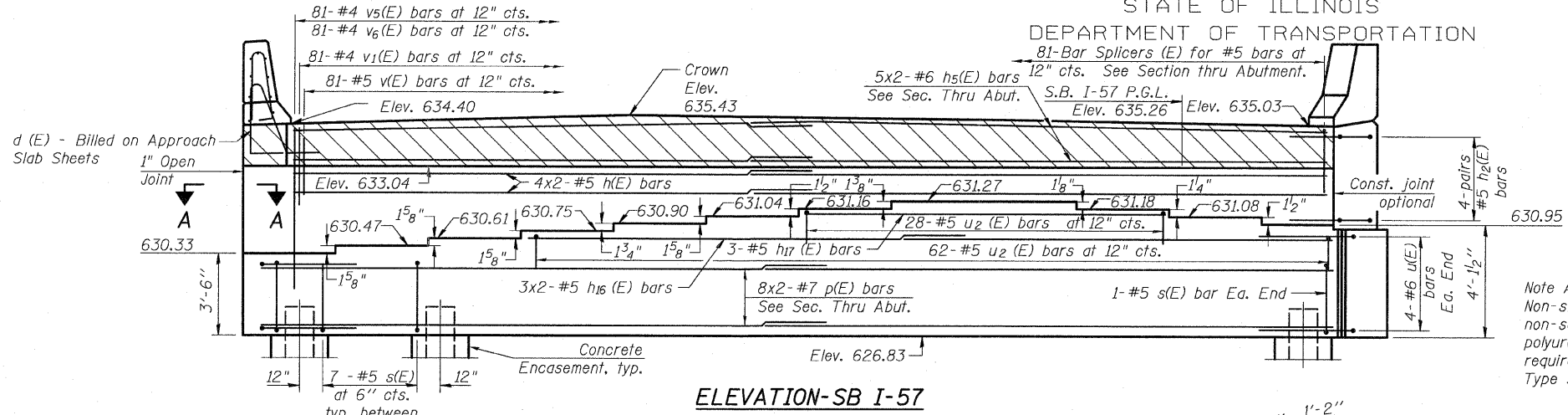
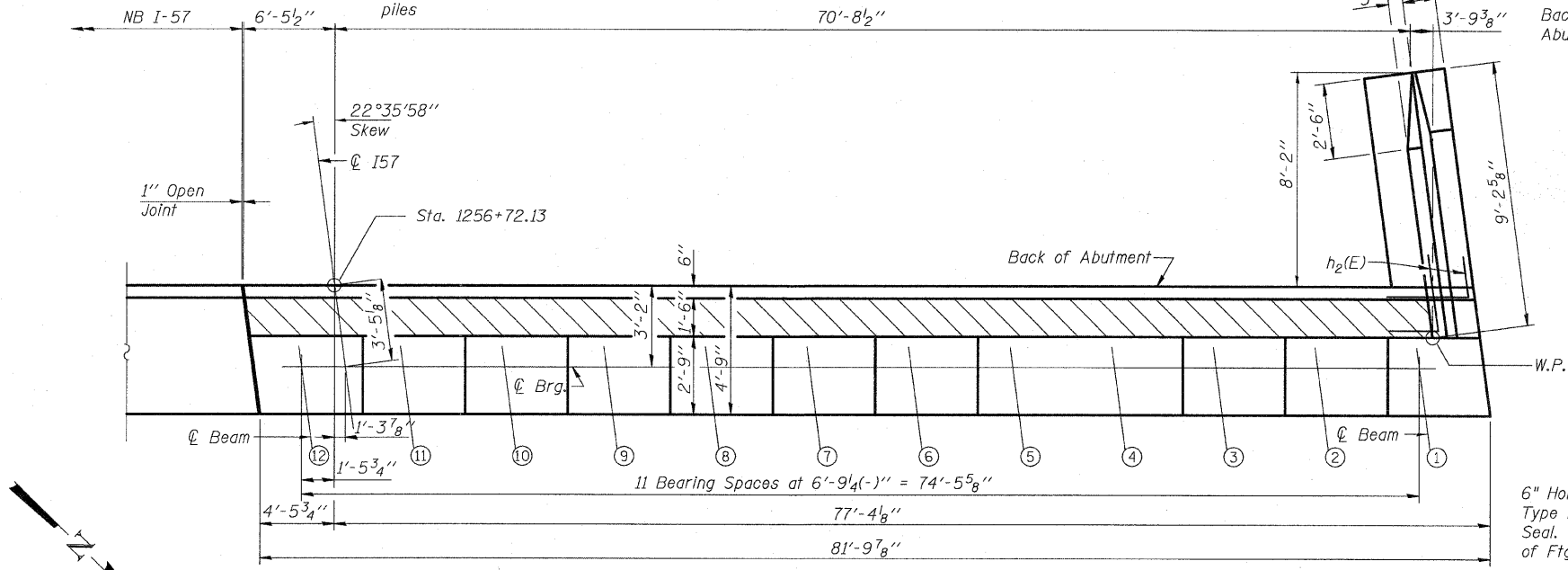


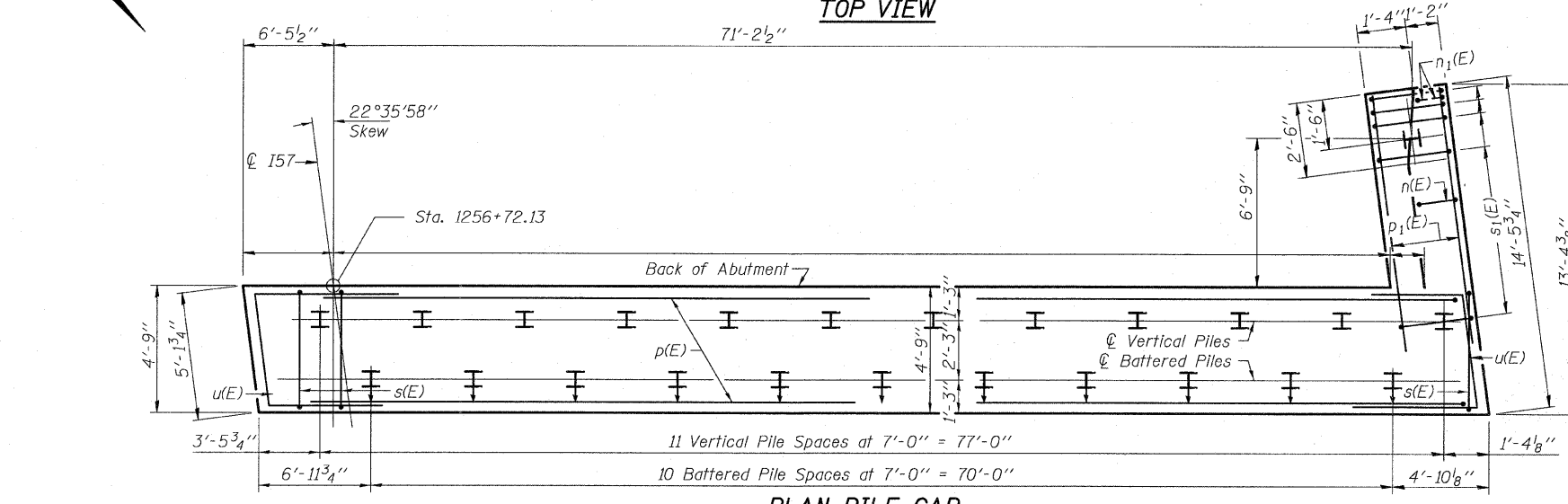
STATE OF ILLINOIS  
DEPARTMENT OF TRANSPORTATION  
81-Bar Splicers (E) for #5 bars at 12" cts. See Section Thru Abutment.  
S.B. I-57 P.G.L.  
Elev. 635.26 Elev. 635.03



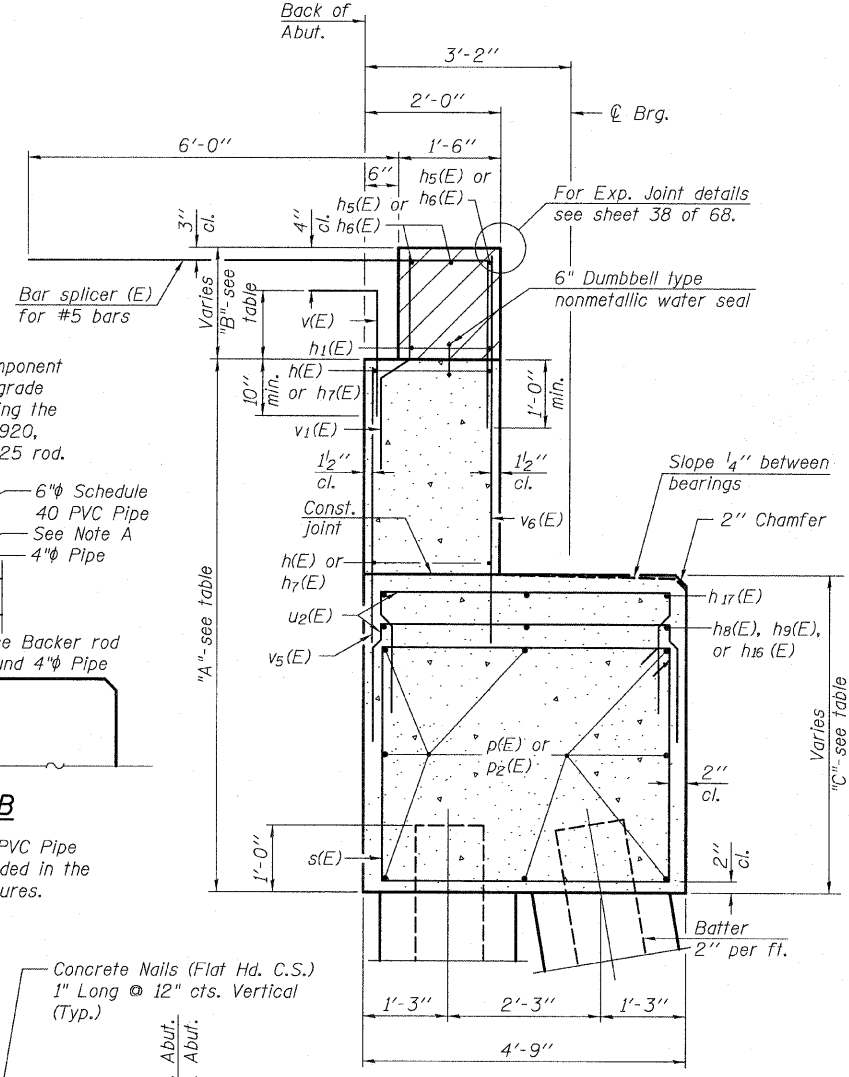
**ELEVATION-SB I-57**



**TOP VIEW**



**PLAN-PILE CAP**

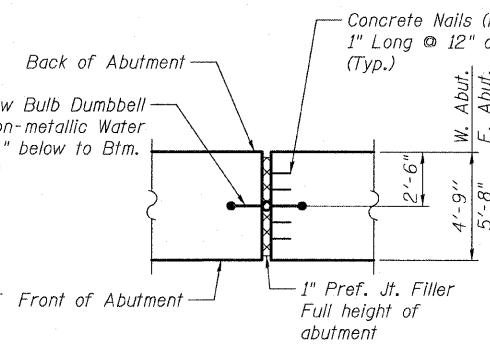


**DETAIL B**

Note: Backer Rod, 6" PVC Pipe & sealant shall be included in the cost of concrete structures.

**SEC. THRU ABUT.**

Location	A	B	C
C-D Road A	6'-4 7/8"	1'-4 3/8" to 1'-9 3/4"	3'-8 1/4" to 4'-0 5/8"
NB I-57	6'-3"	1'-4" to 2'-1 3/8"	3'-6 1/2" to 4'-2 1/2"
SB I-57	6'-2 1/2"	1'-4 3/8" to 2'-4 5/8"	3'-6" to 4'-5 1/4"



**SECTION A-A**

Cost of Water Seal included in the cost of Concrete Structures.

Notes:  
Hatched area to be poured after superstructure false work has been removed. Quantity of concrete included with Concrete Superstructure. Space reinforcement in cap to miss anchor bolts. Four steps monolithically with cap. Quantity of concrete in end post included with Concrete Superstructure on sheet 22 of 68. For details of piles and Concrete Encasement see sheet 55 of 68. For details of Bar Splicers, see sheet 56 of 68.

**WEST ABUTMENT - 2  
STRUCTURE NO. 016-1251**

<b>TYLIN INTERNATIONAL</b>	DESIGNED - EKH	REVISIONS		SHEET NO. 44	F.A.I. RTE. 57	SECTION 1414.2B	COUNTY COOK	TOTAL SHEETS 516	SHEET NO. 289
	CHECKED - SP.	NAME	DATE						
	DRAWN - EKH								
	CHECKED - SP,PDF								
	DATE - 03/18/10								
					68 SHEETS		CONTRACT NO. 60J27		
					FED. ROAD DIST. NO. 1 ILLINOIS FED. AID PROJECT				

P:\60254057-294\STRUCTURAL\I-57\_OVER\_1294\_0161251-60J27-044-W\_ABUT2.dgn

3/17/2010