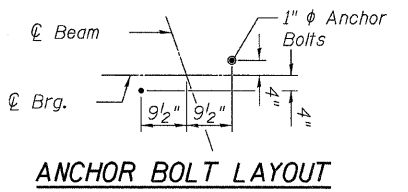
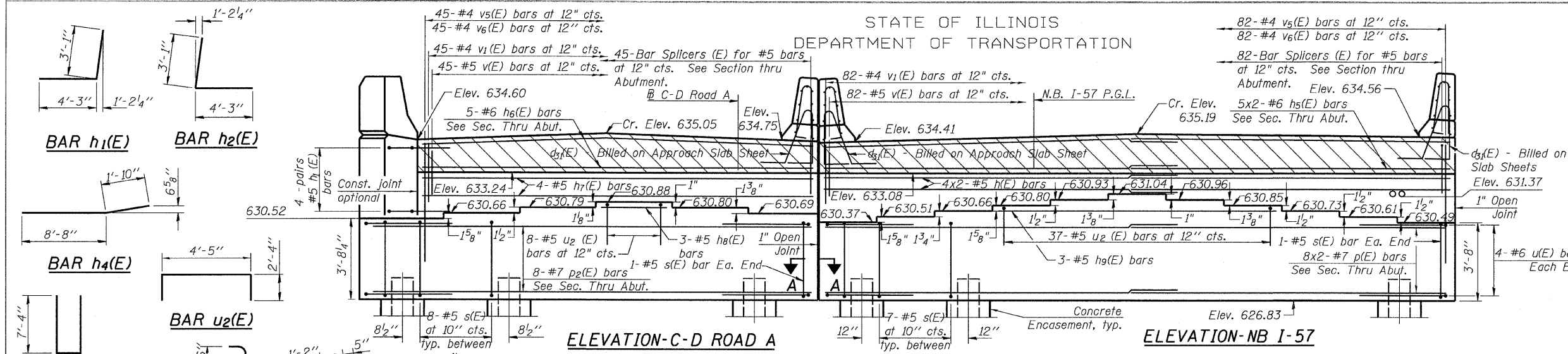


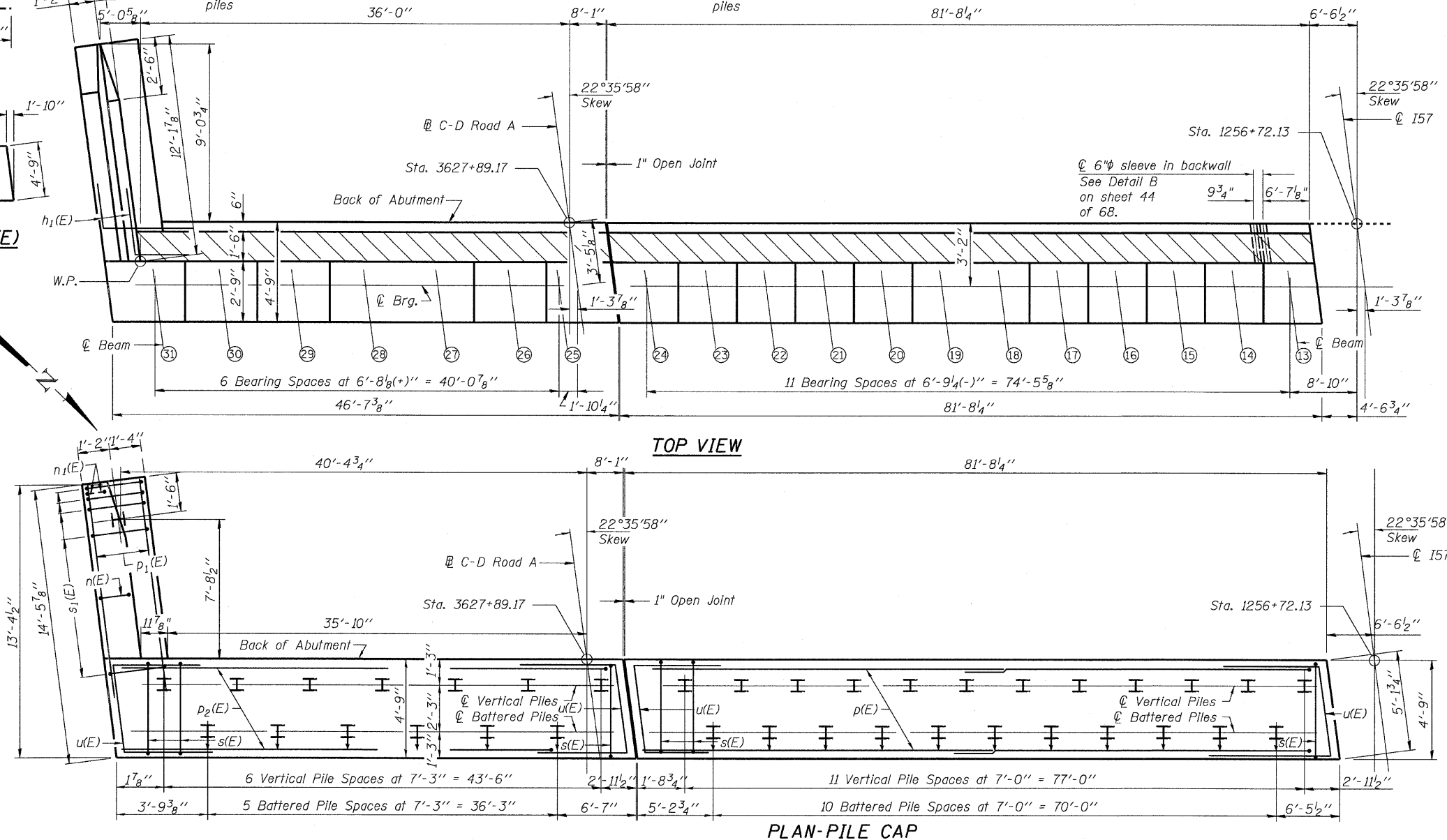
STATE OF ILLINOIS  
DEPARTMENT OF TRANSPORTATION



WEST ABUTMENT  
BILL OF MATERIAL

Bar	No.	Size	Length	Shape
h(E)	16	#5	46'-5"	
h1(E)	8	#5	7'-4"	
h2(E)	8	#5	7'-4"	
h3(E)	22	#4	11'-2"	
h4(E)	14	#4	10'-6"	
h5(E)	20	#6	43'-0"	
h6(E)	5	#6	46'-3"	
h7(E)	4	#5	44'-8"	
h8(E)	3	#5	13'-0"	
h9(E)	3	#5	40'-6"	
h10(E)	6	#5	32'-2"	
h11(E)	3	#5	26'-9"	
n(E)	18	#6	16'-0"	
n1(E)	6	#6	8'-0"	
p(E)	32	#7	43'-4"	
p1(E)	12	#7	12'-2"	
p2(E)	8	#7	46'-3"	
s(E)	208	#5	16'-1"	
s1(E)	24	#4	9'-5"	
u(E)	24	#6	12'-5"	
u2(E)	135	#5	9'-1"	
v(E)	208	#5	4'-9"	
v1(E)	208	#4	2'-10"	
v2(E)	24	#6	6'-7"	
v3(E)	6	#6	6'-2"	
v4(E)	18	#6	6'-11"	
v5(E)	208	#4	4'-1"	
v6(E)	208	#4	4'-6"	
Structure Excavation		Cu. Yd.	433	
Concrete Structures		Cu. Yd.	209.2	
Reinforcement Bars, Epoxy Coated		Pound	16,300	
Furnishing Steel Piles, HP 12x53		Foot	1,680	
Driving Piles		Foot	1,680	
Test Pile, Steel HP 12x53		Each	1	
Concrete Encasement		Cu. Yd.	63.9	

WEST ABUTMENT - 1  
STRUCTURE NO. 016-1251



**PILE DATA**  
Type: HP 12x53 with Pile Shoes  
Nominal Required Bearing: 300 kips  
Factored Resistance Available: 165 kips  
Est. Length: 28 feet  
No. Production Piles: 60  
No. Test Piles: 1

**TYLIN INTERNATIONAL**

DESIGNED	EKH	REVISIONS	NAME	DATE
CHECKED	SP			
DRAWN	EKH			
CHECKED	SP, PDF			
DATE	03/18/10			04/29/10

SHEET NO.	F.A.I. RTE.	SECTION	COUNTY	TOTAL SHEETS	SHEET NO.
68 SHEETS	57	1414.2B	COOK	516	288

CONTRACT NO. 60J27		FED. ROAD DIST. NO. 1 ILLINOIS		FED. AID PROJECT	
--------------------	--	--------------------------------	--	------------------	--

P:\60254057-294\STRUCTURAL\1-57-OVER\_1294\0161251-60J27-043-W-ABUT1.dgn 4/28/2010 2:45:01 PM