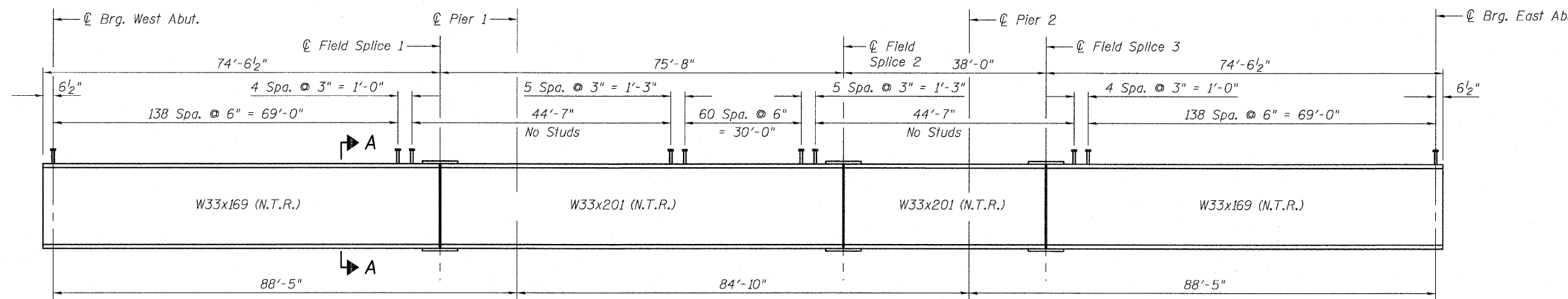
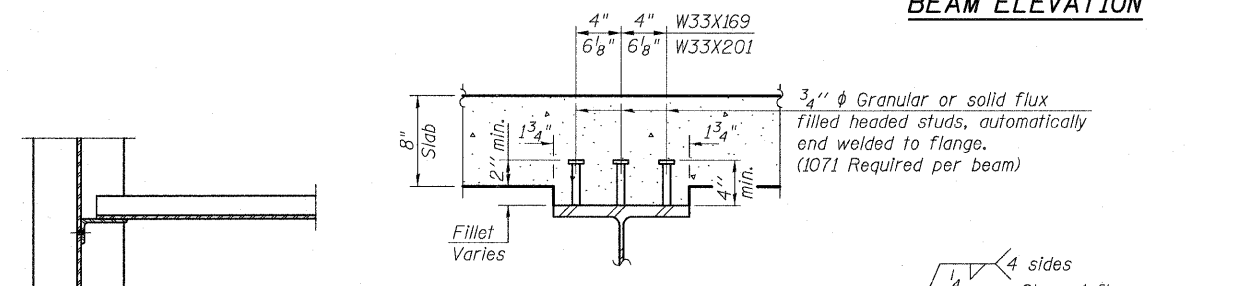


STATE OF ILLINOIS  
DEPARTMENT OF TRANSPORTATION

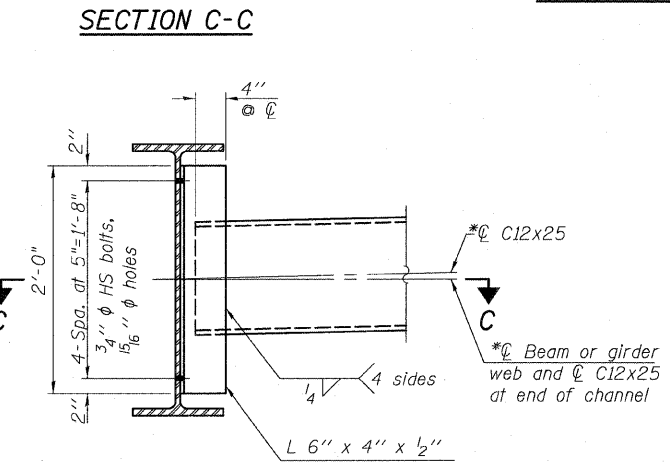


**BEAM ELEVATION**



**SECTION A-A**

**SECTION B-B**

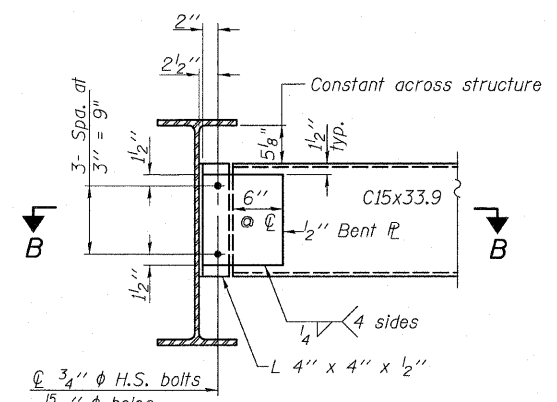


**SECTION C-C**

**INTERIOR DIAPHRAGMS - D1, D2**

(242 - D1 required)  
(66 - D2 required)

Note:  
Two hardened washers required for each set of oversized holes.  
\*Alternate channels (C12x30) are permitted to facilitate material acquisition. Calculated weight of structural steel is based on the lighter section. The alternate, if utilized, shall be provided at no additional cost to the Department.



**END DIAPHRAGMS - D3, D4**

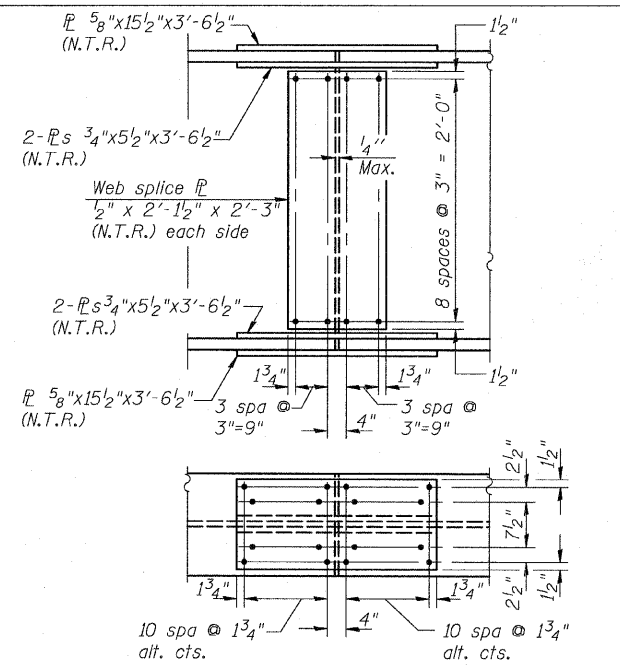
(44 - D3 required)  
(12 - D4 required)

Note:  
Two hardened washers required for each set of oversized holes.

**TOP OF BEAM ELEVATIONS**

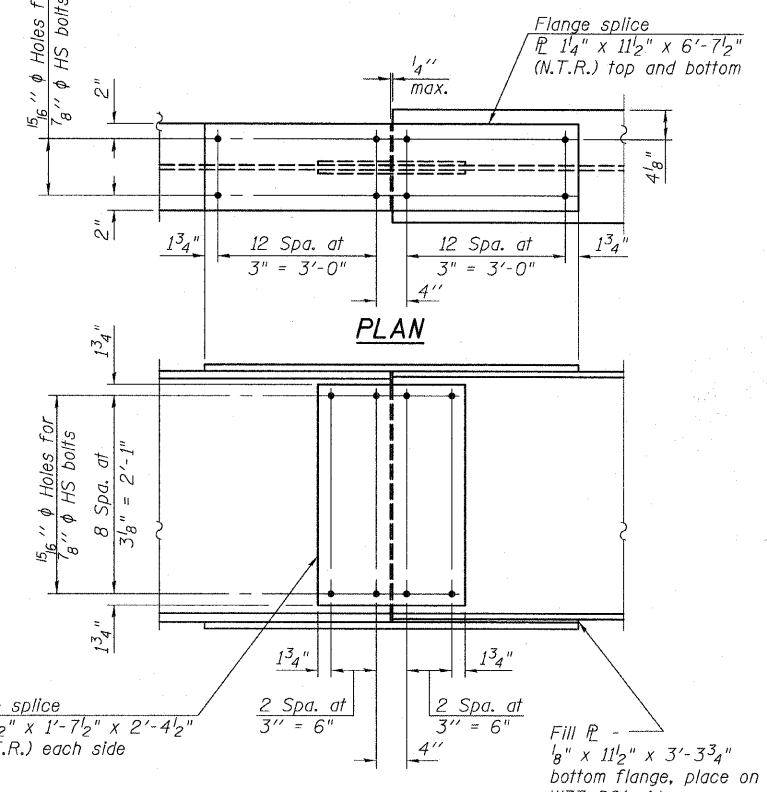
For Fabrication Only

Beam	℄ Brg. W. Abut.	℄ F.S. #1	℄ Pier 1	℄ F.S. #2	℄ Pier 2	℄ F.S. #3	℄ Brg. E. Abut.
1	634.36	634.51	634.51	634.51	634.54	634.56	634.47
2	634.48	634.63	634.63	634.64	634.67	634.69	634.61
3	634.56	634.75	634.75	634.75	634.79	634.81	634.74
4	634.67	634.84	634.84	634.85	634.89	634.91	634.84
5	634.67	634.84	634.85	634.86	634.90	634.92	634.86
6	634.56	634.74	634.74	634.76	634.80	634.83	634.76
7	634.44	634.62	634.62	634.65	634.69	634.71	634.66
8	634.30	634.48	634.49	634.51	634.56	634.59	634.53
9	634.16	634.35	634.35	634.38	634.43	634.46	634.41
10	634.02	634.21	634.22	634.25	634.30	634.33	634.28
11	633.87	634.07	634.08	634.12	634.17	634.20	634.16
12	633.73	633.94	633.95	633.99	634.04	634.07	634.03
13	633.89	634.40	634.11	634.15	634.20	634.23	634.20
14	634.01	634.22	634.24	634.28	634.33	634.36	634.33
15	634.13	634.35	634.36	634.41	634.46	634.49	634.47
16	634.25	634.47	634.48	634.54	634.59	634.62	634.60
17	634.36	634.58	634.59	634.65	634.71	634.74	634.73
18	634.44	634.67	634.69	634.75	634.80	634.84	634.83
19	634.44	634.67	634.69	634.71	634.75	634.81	634.85
20	634.33	634.57	634.58	634.65	634.71	634.75	634.75
21	634.20	634.44	634.46	634.53	634.60	634.63	634.64
22	634.06	634.31	634.32	634.40	634.46	634.50	634.51
23	633.91	634.17	634.19	634.27	634.33	634.37	634.38
24	633.77	634.03	634.05	634.13	634.20	634.24	634.26
25	634.10	634.38	634.42	634.57	634.61	634.63	634.66
26	634.20	634.49	634.52	634.63	634.70	634.75	634.78
27	634.28	634.58	634.61	634.72	634.79	634.84	634.88
28	634.30	634.60	634.63	634.75	634.82	634.87	634.92
29	634.19	634.50	634.52	634.64	634.72	634.77	634.82
30	634.07	634.38	634.41	634.53	634.61	634.66	634.72
31	633.92	634.24	634.27	634.40	634.48	634.53	634.59



**FIELD SPLICE #2**

(31 Required)



**FIELD SPLICE #1 & #3**

(62 Required)

**STRUCTURAL STEEL DETAILS**  
**STRUCTURE NO. 016-1251**

<b>TYLIN INTERNATIONAL</b>	DESIGNED - SP	REVISIONS		SHEET NO. 40	F.A.I. RTE. 57	SECTION 1414.2B	COUNTY COOK	TOTAL SHEETS 516	SHEET NO. 285
	CHECKED - SP,	NAME	DATE						
	DRAWN - SP								
	CHECKED - SP,PDF								
	DATE - 03/18/10								
				68 SHEETS	CONTRACT NO. 60J27		FED. ROAD DIST. NO. 1 ILLINOIS FED. AID PROJECT		

P:\602540\57-274\STRUCTURAL\1-57\_OVER\_1294\0161251-60J27-040-STL\_DTL.dwg 3/17/2010