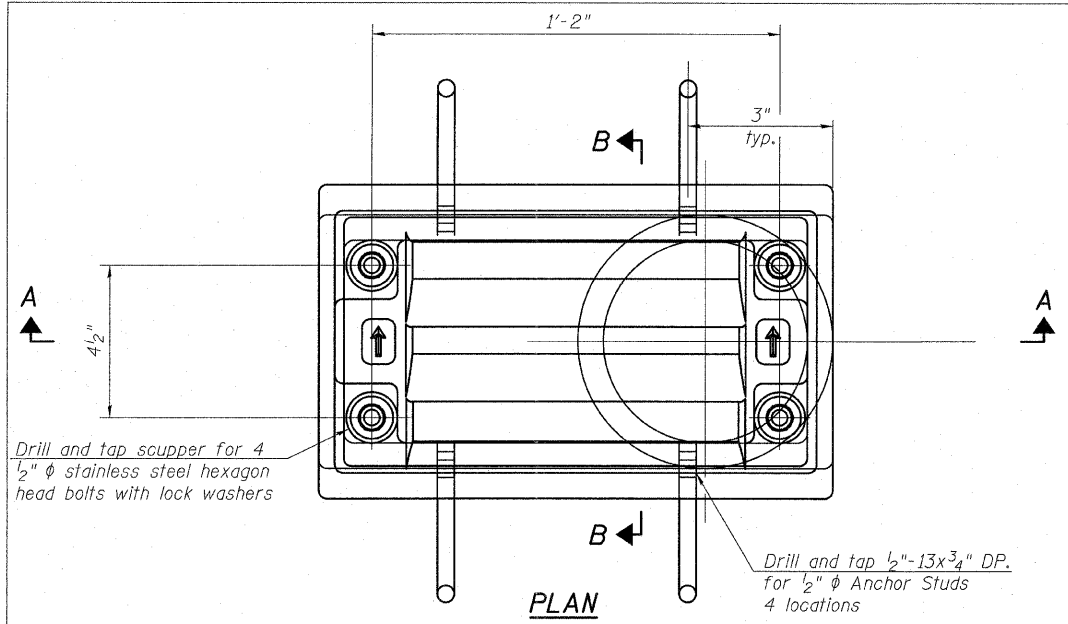
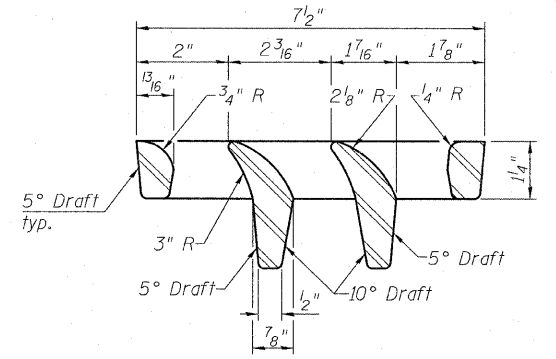


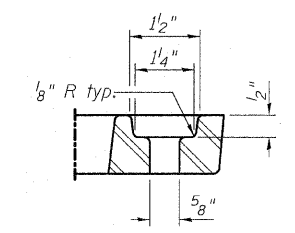
STATE OF ILLINOIS  
DEPARTMENT OF TRANSPORTATION



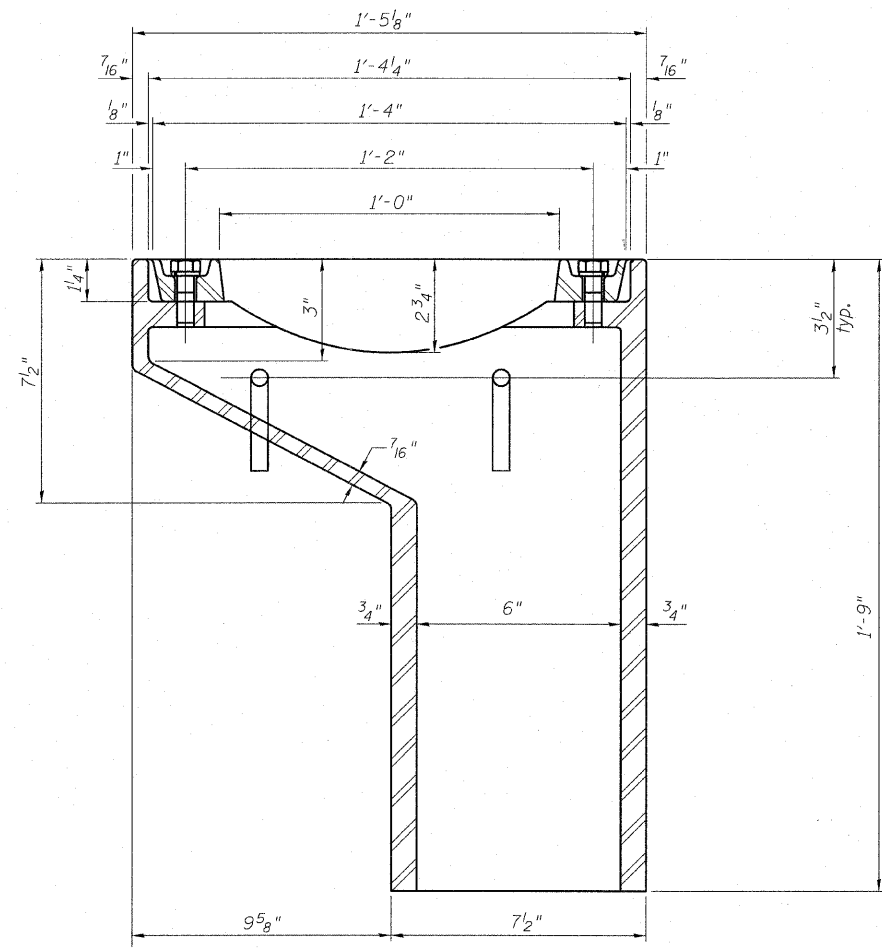
PLAN



VANE GRATE DETAIL

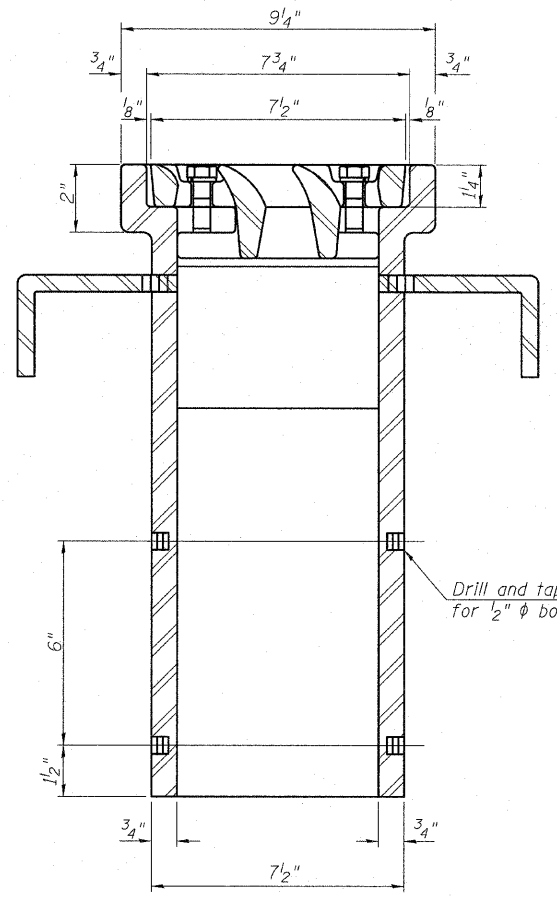


BOLT HOLE DETAIL



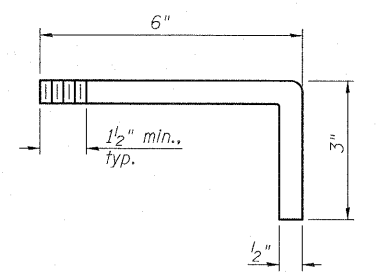
SECTION A-A

See sheet 22 of 68 for scupper location relative to parapet.



SECTION B-B

Drill and tap 1/2"-13x1/2" DP. for 1/2" φ bolts. (4 locations)



ANCHOR STUD DETAIL

BILL OF MATERIAL

ITEM	UNIT	QUANTITY
Drainage Scupper, DS-11	Each	18

DRAINAGE SCUPPER DS-11  
STRUCTURE NO. 016-1251

TYLIN INTERNATIONAL  
DESIGNED - SP  
CHECKED - SP,  
DRAWN - SP  
CHECKED - SP,PDF  
DATE - 03/18/10

REVISIONS	
NAME	DATE


SHEET NO. 37	F.A.I RTE.	SECTION	COUNTY	TOTAL SHEETS	SHEET NO.
	57	1414.2B	COOK	516	282
68 SHEETS	CONTRACT NO. 60J27				
	FED. ROAD DIST. NO. 1 ILLINOIS FED. AID PROJECT				

P:\60254057-294\STRUCTURAL\1-57\_OVER\_1294\0161251-60J27-037-SCUPPER-DS11.dwg 3/17/2010 6:58:09 PM