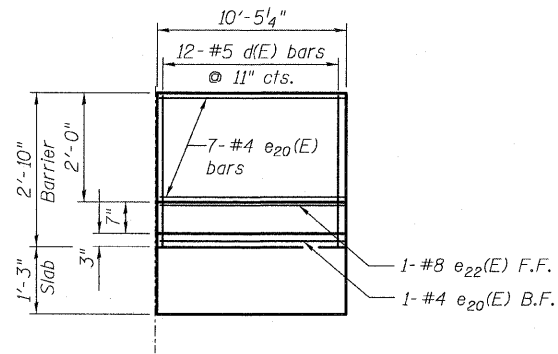
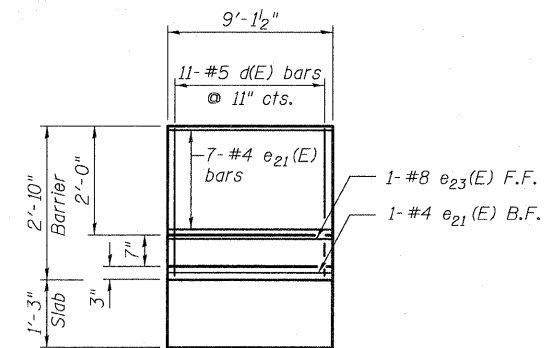


STATE OF ILLINOIS
DEPARTMENT OF TRANSPORTATION



INSIDE ELEVATION OF BARRIER

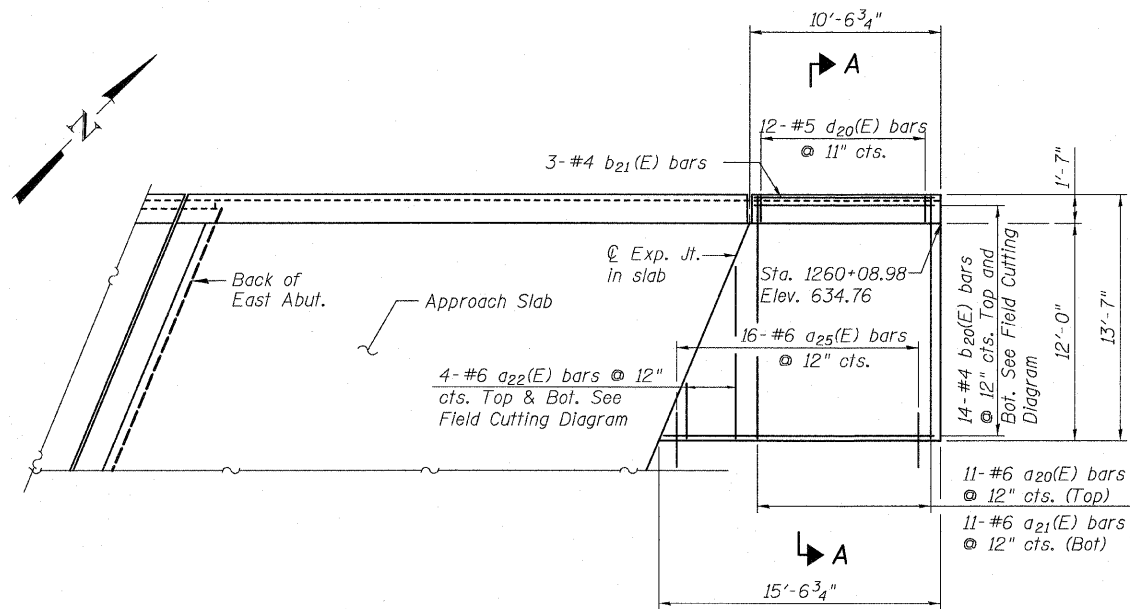


INSIDE ELEVATION OF BARRIER

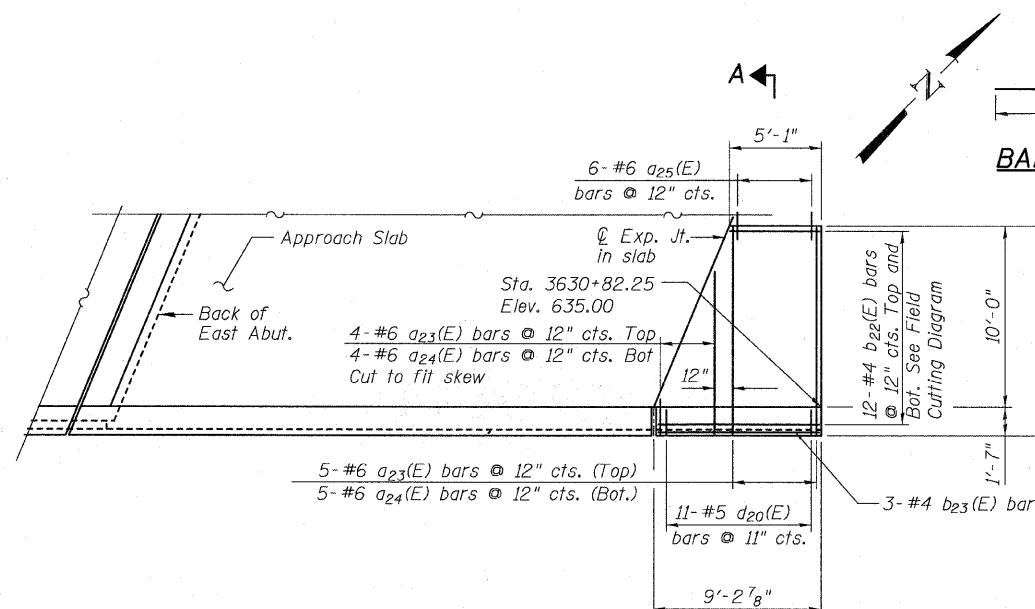
BAR a23(E)

BAR a20(E)

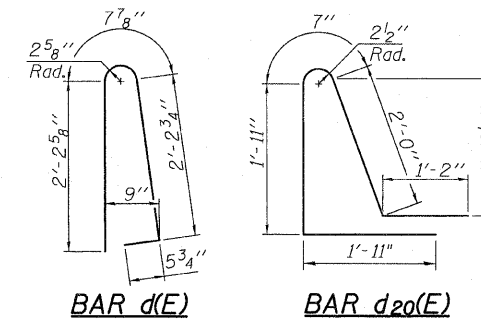
BAR NO.	SIZE	LENGTH	SHAPE
a20(E)	#6	14'-8"	U
a21(E)	#6	13'-3"	U
a22(E)	#6	12'-10"	U
a23(E)	#6	12'-8"	U
a24(E)	#6	11'-3"	U
a25(E)	#6	2'-6"	U
b20(E)	#4	25'-3"	U
b21(E)	#4	10'-1"	U
b22(E)	#4	13'-7"	U
b23(E)	#4	8'-10"	U
d(E)	#5	5'-7"	U
d20(E)	#5	7'-7"	U
e20(E)	#4	10'-1"	U
e21(E)	#4	8'-10"	U
e22(E)	#8	10'-1"	U
e23(E)	#8	8'-10"	U
Concrete Superstructure	Cu. Yd.	14.4	
Reinforcement Bars, Epoxy Coated	Pound	1,800	



PLAN-SB I-57

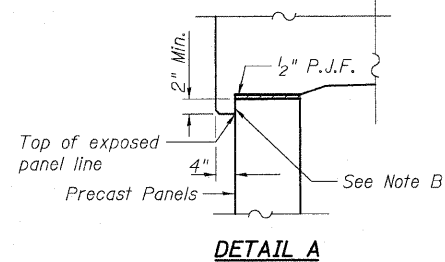


PLAN C-D ROAD A



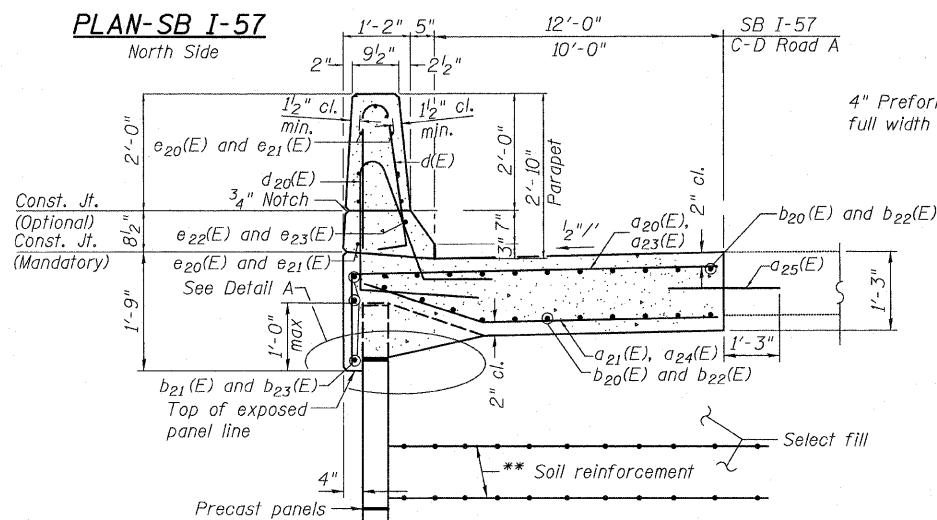
BAR d(E)

BAR d20(E)



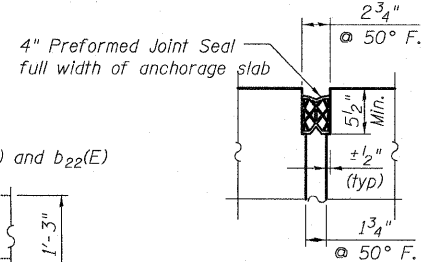
DETAIL A

Note B:
Bond breaker membrane on front of panel



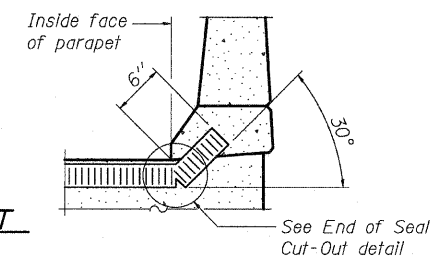
SECTION A-A

**The M.S.E. wall supplier's internal stability design shall account for the anchorage slab's bearing pressure surcharge of 1.0 ksf and horizontal sliding force of 0.5 kips/ft. of wall.



SECTION

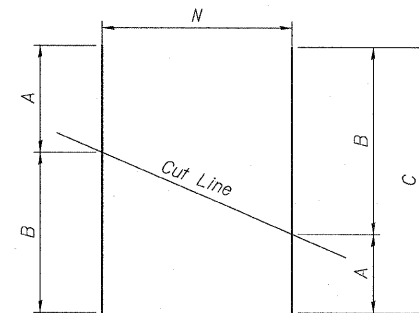
PREFORMED JOINT SEAL



END OF SEAL TREATMENT AT PARAPET

END OF SEAL CUT-OUT

DETAIL - EXPANSION JOINT IN SLAB



FIELD CUTTING DIAGRAM

Order bars full length. Cut as shown and use remainder of bars in opposite face

Bar	N	A	B	C
a22(E)	4-#6	2'-10"	10'-0"	12'-10"
b20(E)	14-#4	10'-1"	15'-2"	25'-3"
b22(E)	12-#4	4'-9"	8'-10"	13'-7"

ANCHORAGE SLAB DETAILS

S.N. 016-1251

TYLIN INTERNATIONAL	DESIGNED - JMA	REVISIONS		SHEET NO. 35	F.A.I. RTE. 57	SECTION 1414.2B	COUNTY COOK	TOTAL SHEETS 516	SHEET NO. 280
	CHECKED - SP.	NAME	DATE						
	DRAWN - JMA								
	CHECKED - SP,PDF								
	DATE - 03/18/10			68 SHEETS	CONTRACT NO. 60J27		FED. ROAD DIST. NO. 1 ILLINOIS FED. AID PROJECT		

P:\60254\057-294\STRUCTURAL\I-57_OVER_1294_0161251-60J27-035-MOMENT.SL.DWG 3/17/2010